



# BASAN COMMODITY LIMITED

DAILY COMMODITY REPORT 1st Feb 2018

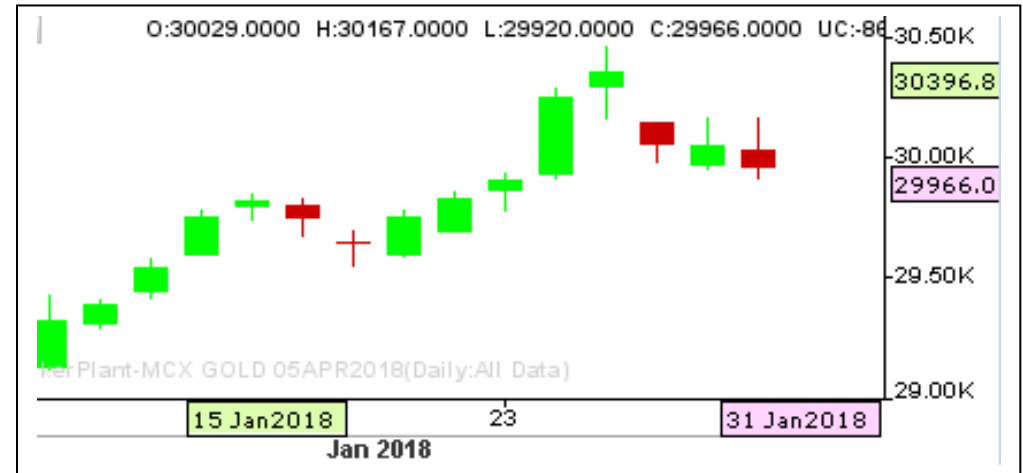
## GOLD SIDEWAYS

RANGE : 29800 - 30200

### What Chart Says :

Feb Gold prices opened gap down at 30029 levels, gained some positive momentum by posting a high of 30167 levels and finally settled lower at 29966 levels.

Overall trend remains firm. However, corrective declines can't be ruled out towards 29900 levels initial and any strong close below 29900 can put some more pressure on prices again. To attract any buying interest prices must settle well above 30170 levels.



## SILVER MIXED

RANGE : 38800 - 39500

### What Chart Says :

Mar Silver prices settled at 39319 levels, gained from the day's low of 39139 levels.

Mar Silver prices are likely to trade sideways between 39500 - 38800 levels for the day. To continue its positive momentum prices must sustain over 39500 levels.

Awaiting for fresh entry.



Registered Office:#15-8-1/2/3, 2nd floor, Sliddiamber Bazar, Hyderabad - 500012, Telangana State. INDIA.

Corporate Office: #3-6-196/197, Pnme Plaza, 2nd floor, flat No. 204 A & B, H1mayath Nagar, Hyderabad - 500029, Telangana State.INDIA.

Ph:+91-40-64645000,Fax: +91-40-23262166,E-mail:support@basanonline.com,Website:[www.basanonline.com](http://www.basanonline.com)



# BASAN COMMODITY LIMITED

DAILY COMMODITY REPORT 1st Feb 2018

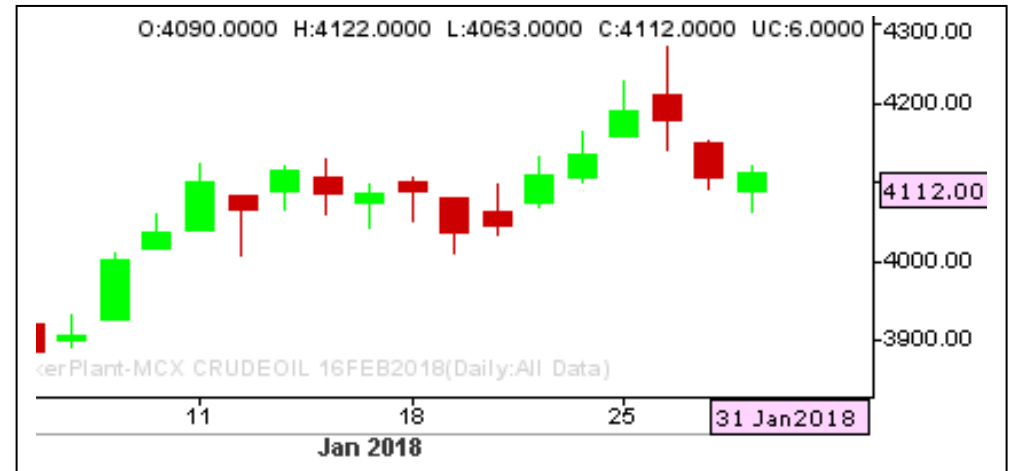
## CRUDE OIL WEAK

RANGE : 4120 - 4040

### What Chart Says :

Feb Crude Oil has opened down at 4090 levels and regained its positive momentum from day's low of 4063 levels to settle at 4112 levels.

As prices has strongly settled below key 4120 levels, our bias remains weak for the time being. For the day Jan Crude Oil Prices are likely to extend its two day declines towards 4040 followed by 4000 levels. Any strong break and close above 4120 levels can change our bearish bias.



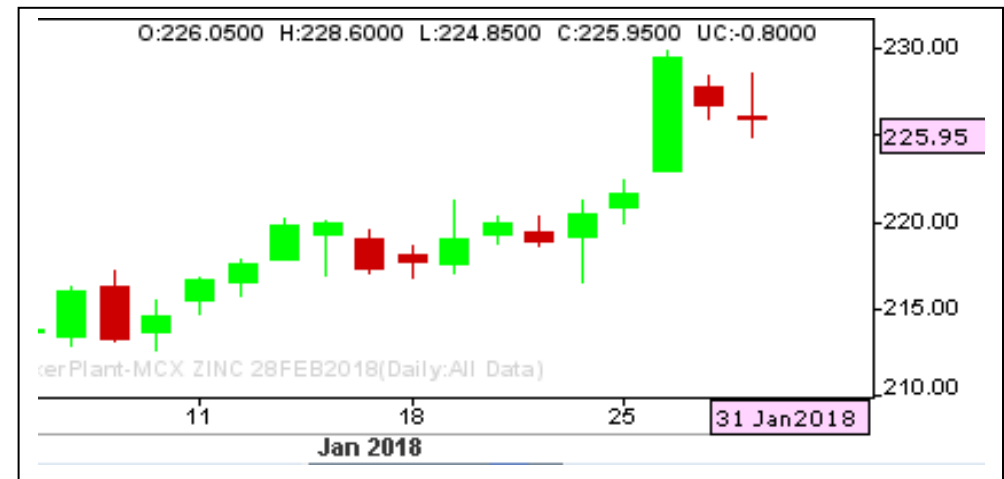
## ZINC POSITIVE

RANGE : 222.00 - 230.00

### What Chart Says :

Jan Zinc has opened lower at 226.05 levels and finally settled on weak note at 225.95 levels by posting a high of 228.60 levels.

For the day trend remains mixed and is expected to trade sideways between 224 - 229 levels. To attract any positive momentum prices must settle over 230 levels but the chances are less to breach.



Registered Office:#15-8-1/2/3, 2nd floor, Sliddiamber Bazar, Hyderabad - 500012, Telangana State. INDIA.

Corporate Office: #3-6-196/197, Pnme Plaza, 2nd floor, flat No. 204 A & B, H1mayath Nagar, Hyderabad - 500029, Telangana State.INDIA.

Ph:+91-40-64645000,Fax: +91-40-23262166,E-mail:support@basanonline.com,Website:[www.basanonline.com](http://www.basanonline.com)



# BASAN COMMODITY LIMITED

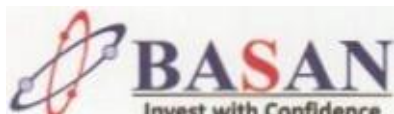
DAILY COMMODITY REPORT 1st Feb 2018

COMMODITIES	TREND	R1	R2	R3	PIVOT POINT	S1	S2	S3	Close
ALUMINI 30MAR2018	BEARISH	141.73	142.46	143.71	141.21	140.48	139.96	138.71	141
ALUMINI 28FEB2018	BEARISH	141.46	142.33	143.73	140.93	140.06	139.53	138.13	140.6
ALUMINI 31JAN2018	BEARISH	141.65	142.5	143.8	141.2	140.35	139.9	138.6	140.8
ALUMINIUM 30MAR2018	BEARISH	141.5	142.4	143.85	140.95	140.05	139.5	138.05	140.6
ALUMINIUM 28FEB2018	BULLISH	1210	1215	1225	1205	1200	1195	1185	1205
ALUMINIUM 31JAN2018	BULLISH	1201.93	1211.96	1232.96	1190.96	1180.93	1169.96	1148.96	1191.9
CARDAMOM 13APR2018	BULLISH	1184.7	1195.8	1226.2	1165.4	1154.3	1135	1104.6	1173.6
CARDAMOM 15MAR2018	BEARISH	459.55	460	460.85	459.15	458.7	458.3	457.45	459.1
CARDAMOM 15FEB2018	BEARISH	457.35	459.9	464.05	455.75	453.2	451.6	447.45	454.8
COPPER 29JUN2018	BEARISH	453.86	456.83	461.63	452.03	449.06	447.23	442.43	450.9
COPPER 30APR2018	BULLISH	461.1	462.6	465.65	459.55	458.05	456.5	453.45	459.6
COPPER 28FEB2018	BEARISH	457.3	459.9	464.1	455.7	453.1	451.5	447.3	454.7
COPPERM 29JUN2018	BEARISH	453.8	456.7	461.35	452.05	449.15	447.4	442.75	450.9
COPPERM 30APR2018	BEARISH	236.66	243.33	253.33	233.33	226.66	223.33	213.33	230
COPPERM 28FEB2018	BULLISH	20420	20550	20810	20290	20160	20030	19770	20290
COTFEBMA18 28FEB2018	BULLISH	20173.3	20296.7	20546.7	20046.66	19923.3	19796.7	19546.7	20050
COTJANFE18 31JAN2018	BEARISH	577.16	582.13	589.73	574.53	569.56	566.93	559.33	572.2
COTTON 30MAR2018	BEARISH	574.53	580.06	588.86	571.26	565.73	562.46	553.66	569
COTTON 28FEB2018	BEARISH	570.5	576.1	585.3	566.9	561.3	557.7	548.5	564.9
COTTON 31JAN2018	BEARISH	4108.66	4132.33	4178.33	4086.33	4062.66	4040.33	3994.33	4085
CPO 30APR2018	BULLISH	4124.66	4138.33	4175.33	4101.33	4087.66	4064.33	4027.33	4111
CPO 28MAR2018	BULLISH	4133.33	4153.66	4207.66	4099.66	4079.33	4045.66	3991.66	4113
CPO 28FEB2018	BULLISH	4135	4158	4217	4099	4076	4040	3981	4112
CPO 31JAN2018	BULLISH	4133	4152	4205	4099	4080	4046	3993	4114
CRUDEOIL 19JUN2018	BULLISH	4132.33	4151.66	4203.66	4099.66	4080.33	4047.66	3995.66	4113
CRUDEOIL 21MAY2018	BULLISH	4134.33	4156.66	4213.66	4099.66	4077.33	4042.66	3985.66	4112
CRUDEOIL 19APR2018	BEARISH	30158.3	30225.7	30344.7	30106.66	30039.3	29987.7	29868.7	30091
CRUDEOIL 19MAR2018	BEARISH	30056.7	30147.3	30306.3	29988.33	29897.7	29829.3	29670.3	29966
CRUDEOIL 16FEB2018	BEARISH	489.33	534.66	614.66	454.66	409.33	374.66	294.66	444
CRUDEOILM 21MAY2018	BULLISH	462	481	521	441	422	401	361	443
CRUDEOILM 19APR2018	BEARISH	267.33	298.66	353.66	243.66	212.33	188.66	133.66	236
CRUDEOILM 19MAR2018	BEARISH	244.66	261.83	295.83	227.83	210.66	193.83	159.83	227.5
CRUDEOILM 16FEB2018	BULLISH	141.66	160.83	200.83	120.83	101.66	80.83	40.83	122.5
GOLD 05JUN2018	BULLISH	111	116.5	127.5	105.5	100	94.5	83.5	105.5
GOLD 05APR2018	BULLISH	30172	30227	30342	30112	30057	29997	29882	30117
GOLD 27MAR2018	BULLISH	24168.3	24199.7	24265.7	24133.66	24102.3	24067.7	24001.7	24137
GOLD 27MAR2018	BEARISH	24162	24226	24336	24116	24052	24006	23896	24098

Registered Office:#15-8-1/2/3, 2nd floor, Slddiamber Bazar, Hyderabad - 500012, Telangana State. INDIA.

Corporate Office: #3-6-196/197, Pnme Plaza, 2nd floor, flat No. 204 A & B, H1mayath Nagar, Hyderabad - 500029, Telangana State.INDIA.

Ph:+91-40-64645000,Fax: +91-40-23262166,E-mail:support@basanonline.com,Website:[www.basanonline.com](http://www.basanonline.com)



# BASAN COMMODITY LIMITED

DAILY COMMODITY REPORT 1st Feb 2018

COMMODITIES	TREND	R1	R2	R3	PIVOT POINT	S1	S2	S3	Close
GOLD 27MAR2018	BEARISH	30030	30108	30234	29982	29904	29856	29730	29952
GOLD 27MAR2018	BEARISH	30007.7	30095.3	30244.3	29946.33	29858.7	29797.3	29648.3	29920
GOLD 27MAR2018	BEARISH	30165.3	30266.7	30462.7	30070.66	29969.3	29874.7	29678.7	30064
GOLD 05FEB2018	BEARISH	2996.66	3002.33	3011.33	2993.33	2987.66	2984.33	2975.33	2991
GOLDGUINEA 28MAR2018	BEARISH	2995.66	3005.33	3022.33	2988.33	2978.66	2971.33	2954.33	2986
GOLDGUINEA 28FEB2018	BEARISH	2986.66	2994.33	3007.33	2981.33	2973.66	2968.33	2955.33	2979
GOLDGUINEA 31JAN2018	BULLISH	168.33	169.21	171.21	167.21	166.33	165.21	163.21	167.45
GOLDM 05APR2018	BULLISH	168.13	169.11	171.31	166.91	165.93	164.71	162.51	167.15
GOLDM 05MAR2018	BULLISH	168.26	169.13	171.13	167.13	166.26	165.13	163.13	167.4
GOLDM 05FEB2018	BULLISH	168.13	169.11	171.31	166.91	165.93	164.71	162.51	167.15
GOLDPETAL 30APR2018	BULLISH	1268.33	1270.66	1275.66	1265.66	1263.33	1260.66	1255.66	1266
GOLDPETAL 28MAR2018	BULLISH	1428.86	1438.93	1462.93	1414.93	1404.86	1390.93	1366.93	1418.8
GOLDPETAL 28FEB2018	BULLISH	1550.26	1555.53	1566.93	1544.13	1538.86	1532.73	1521.33	1545
GOLDPETAL 31JAN2018	BULLISH	1553.33	1561.66	1581.66	1541.66	1533.33	1521.66	1501.66	1545
LEAD 30MAR2018	BULLISH	1550.96	1562.03	1590.13	1533.93	1522.86	1505.83	1477.73	1539.9
LEAD 28FEB2018	BEARISH	188.26	192.43	198.83	186.03	181.86	179.63	173.23	184.1
LEAD 31JAN2018	BEARISH	188.5	193.8	202.1	185.5	180.2	177.2	168.9	183.2
LEADMINI 30MAR2018	BEARISH	200.73	210.96	226.76	195.16	184.93	179.36	163.56	190.5
LEADMINI 28FEB2018	BULLISH	877	877	877	877	877	877	877	877
LEADMINI 31JAN2018	BULLISH	874.63	874.66	874.76	874.56	874.53	874.46	874.36	874.6
MENTHAOIL 29JUN2018	BEARISH	869.03	875.16	885.26	865.06	858.93	854.96	844.86	862.9
MENTHAOIL 31MAY2018	BEARISH	865.16	871.43	881.93	860.93	854.66	850.43	839.93	858.9
MENTHAOIL 30APR2018	BULLISH	875	877.5	882.5	872.5	870	867.5	862.5	872.5
MENTHAOIL 28MAR2018	BULLISH	875.03	878.26	884.76	871.76	868.53	865.26	858.76	871.8
MENTHAOIL 28FEB2018	BEARISH	868.96	874.43	883.73	865.13	859.66	855.83	846.53	863.5
MENTHAOIL 31JAN2018	BEARISH	865.9	873.1	886.4	859.8	852.6	846.5	833.2	858.7
NATURALGAS 25APR2018	BULLISH	39909.3	39997.7	40199.7	39795.66	39707.3	39593.7	39391.7	39821
NATURALGAS 26MAR2018	BULLISH	39421	39523	39766	39280	39178	39037	38794	39319
NATURALGAS 23FEB2018	BEARISH	40356	40362	40373	40351	40345	40340	40329	40350
NICKEL 31MAY2018	BULLISH	39968.3	40060.7	40281.7	39839.66	39747.3	39618.7	39397.7	39876
NICKEL 30MAR2018	BULLISH	39429.3	39525.7	39757.7	39293.66	39197.3	39061.7	38829.7	39333
NICKEL 28FEB2018	BULLISH	40395	40449	40561	40337	40283	40225	40113	40341
NICKEL 31JAN2018	BULLISH	39928.3	40004.7	40184.7	39824.66	39748.3	39644.7	39464.7	39852
NICKELM 31MAY2018	BULLISH	39434.7	39537.3	39787.3	39287.33	39184.7	39037.3	38787.3	39332
NICKELM 30APR2018	BEARISH	225.83	226.51	227.86	225.16	224.48	223.81	222.46	225.15
NICKELM 30MAR2018	BULLISH	226.91	227.88	229.88	225.88	224.91	223.88	221.88	225.95
NICKELM 28FEB2018	BULLISH	226.06	226.98	228.83	225.13	224.21	223.28	221.43	225.15

Registered Office:#15-8-1/2/3, 2nd floor, Slddiamber Bazar, Hyderabad - 500012, Telangana State. INDIA.

Corporate Office: #3-6-196/197, Pnme Plaza, 2nd floor, flat No. 204 A & B, H1mayath Nagar, Hyderabad - 500029, Telangana State.INDIA.

Ph:+91-40-64645000,Fax: +91-40-23262166,E-mail:support@basanonline.com,Website:[www.basanonline.com](http://www.basanonline.com)



## **BASAN COMMODITY LIMITED**

**DAILY COMMODITY REPORT 1st Feb 2018**

Registered Office: #15-8-1/2/3, 2nd floor, Siddiamber Bazar, Hyderabad - 500012, Telangana State. INDIA.  
Corporate Office: #3-6-196/197, Pnme Plaza, 2nd floor, flat No. 204 A & B, H1mayath Nagar, Hyderabad - 500029, Telangana State. INDIA.  
Ph: +91-40-64645000, Fax: +91-40-23262166, E-mail: support@basanonline.com, Website: [www.basanonline.com](http://www.basanonline.com)