



# BASAN COMMODITY LIMITED

DAILY COMMODITY REPORT 31st Jan 2018

## GOLD SIDEWAYS

RANGE : 29800 - 30200

### What Chart Says :

Feb Gold prices opened gap down at 29978 levels, gained some positive momentum from day's low of 29954 levels and finally settled at 30052 levels.

Charts are looking strong for medium term. However, for the short term trend remains mixed between 29900 - 30200 levels. To attract any buying interest prices must sustain over 30200 levels, failure of which can put some pressure on prices.



## SILVER MIXED

RANGE : 38800 - 39500

### What Chart Says :

Mar Silver prices settled at 39123 levels, declined from the day's high of 39450 levels.

Mar Silver prices are likely to trade sideways between 39400 - 38800 levels for the day. To continue its positive momentum prices must sustain over 39500 levels.

Awaiting for fresh entry.



Registered Office:#15-8-1/2/3, 2nd floor, Sliddiamber Bazar, Hyderabad - 500012, Telangana State. INDIA.

Corporate Office: #3-6-196/197, Pnme Plaza, 2nd floor, flat No. 204 A & B, H1mayath Nagar, Hyderabad - 500029, Telangana State.INDIA.

Ph:+91-40-64645000,Fax: +91-40-23262166,E-mail:support@basanonline.com,Website:[www.basanonline.com](http://www.basanonline.com)



# BASAN COMMODITY LIMITED

DAILY COMMODITY REPORT 31st Jan 2018

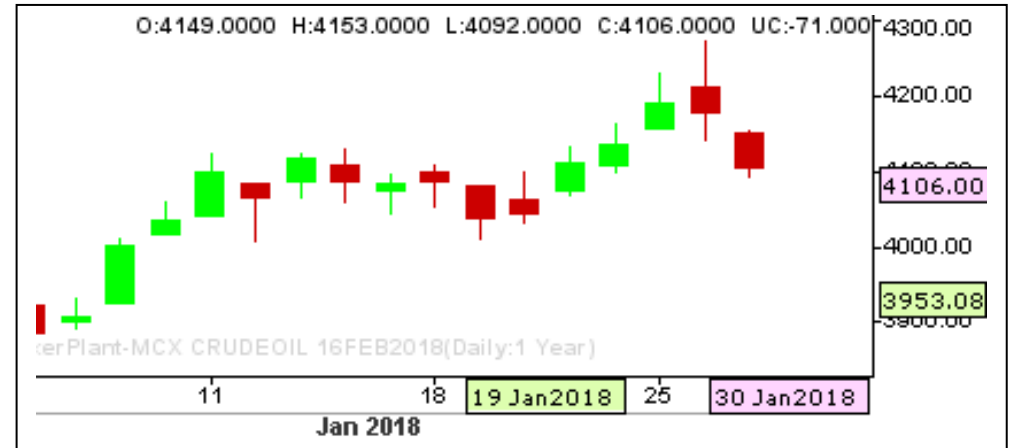
## CRUDE OIL WEAK

RANGE : 4120 - 4040

### What Chart Says :

Feb Crude Oil has opened down at 4149 levels and due to profit booking prices slipped to 4092 lows and finally settled at 4106 levels.

As prices has strongly settled below key 3120 levels, our bias remains weak for the time being. For the day Jan Crude Oil Prices are likely to extend its two day declines towards 4040 followed by 4000 levels.



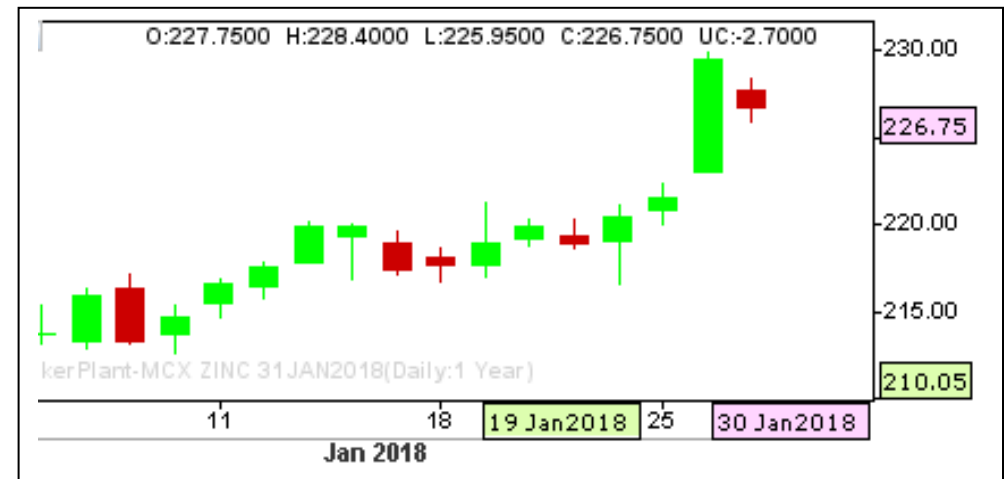
## ZINC POSITIVE

RANGE : 225.00 - 232.00

### What Chart Says :

Jan Zinc has opened lower at 227.75 levels and finally settled on weak note at 226.75 levels.

For the day trend remains mixed and is expected to trade between 224 - 229 levels. To attract any positive momentum prices must settle over 230 levels but the chances are less to breach.



Registered Office:#15-8-1/2/3, 2nd floor, Sliddiamber Bazar, Hyderabad - 500012, Telangana State. INDIA.

Corporate Office: #3-6-196/197, Pnme Plaza, 2nd floor, flat No. 204 A & B, H1mayath Nagar, Hyderabad - 500029, Telangana State.INDIA.

Ph:+91-40-64645000,Fax: +91-40-23262166,E-mail:support@basanonline.com,Website:[www.basanonline.com](http://www.basanonline.com)



# BASAN COMMODITY LIMITED

DAILY COMMODITY REPORT 31st Jan 2018

COMMODITIES	TREND	R1	R2	R3	PIVOT POINT	S1	S2	S3	Close
ALUMINI 30MAR2018	BEARISH	142.08	143.11	145.01	141.21	140.18	139.31	137.41	141.05
ALUMINI 28FEB2018	BULLISH	142.16	143.18	145.28	141.08	140.06	138.98	136.88	141.15
ALUMINI 31JAN2018	BULLISH	142.2	143.3	145.55	141.05	139.95	138.8	136.55	141.1
ALUMINIUM 30MAR2018	BULLISH	141.81	142.43	143.73	141.13	140.51	139.83	138.53	141.2
ALUMINIUM 28FEB2018	BULLISH	142.15	143.2	145.3	141.1	140.05	139	136.9	141.1
ALUMINIUM 31JAN2018	BULLISH	142.25	143.4	145.75	141.05	139.9	138.7	136.35	141.1
CARDAMOM 13APR2018	BULLISH	1185	1185	1185	1185	1185	1185	1185	1185
CARDAMOM 15MAR2018	BEARISH	1178.33	1183.16	1192.16	1174.16	1169.33	1165.16	1156.16	1173.5
CARDAMOM 15FEB2018	BULLISH	1160.36	1166.23	1179.63	1152.83	1146.96	1139.43	1126.03	1154.5
COPPER 29JUN2018	BULLISH	454.83	455.31	456.31	454.31	453.83	453.31	452.31	454.35
COPPER 30APR2018	BULLISH	456.81	459.48	465.93	453.03	450.36	446.58	440.13	454.15
COPPER 28FEB2018	BULLISH	453.03	455.61	462.06	449.16	446.58	442.71	436.26	450.45
COPPERM 29JUN2018	BULLISH	458.86	460.78	465.38	456.18	454.26	451.58	446.98	456.95
COPPERM 30APR2018	BULLISH	456.4	458.6	464.3	452.9	450.7	447.2	441.5	454.2
COPPERM 28FEB2018	BULLISH	452.93	455.41	461.71	449.11	446.63	442.81	436.51	450.45
COTFEBMA18 28FEB2018	BULLISH	230	230	230	230	230	230	230	230
COTJANFE18 31JAN2018	BEARISH	293.33	306.66	326.66	286.66	273.33	266.66	246.66	280
COTTON 30MAR2018	BEARISH	20536.7	20723.3	21033.3	20413.33	20226.7	20103.3	19793.3	20350
COTTON 28FEB2018	BEARISH	20313.3	20516.7	20846.7	20186.66	19983.3	19856.7	19526.7	20110
COTTON 31JAN2018	BEARISH	20006.7	20193.3	20493.3	19893.33	19706.7	19593.3	19293.3	19820
CPO 30APR2018	BULLISH	580.43	581.76	584.86	578.66	577.33	575.56	572.46	579.1
CPO 28MAR2018	BEARISH	577.33	579.86	584.06	575.66	573.13	571.46	567.26	574.8
CPO 28FEB2018	BEARISH	573.73	577.06	582.46	571.66	568.33	566.26	560.86	570.4
CPO 31JAN2018	BEARISH	560.46	561.33	562.93	559.73	558.86	558.13	556.53	559.6
CRUDEOIL 19JUN2018	BULLISH	4120	4120	4120	4120	4120	4120	4120	4120
CRUDEOIL 21MAY2018	BULLISH	4135.33	4137.66	4142.66	4132.66	4130.33	4127.66	4122.66	4133
CRUDEOIL 19APR2018	BEARISH	4137	4157	4193	4121	4101	4085	4049	4117
CRUDEOIL 19MAR2018	BEARISH	4144	4179	4239	4119	4084	4059	3999	4109
CRUDEOIL 16FEB2018	BEARISH	4142	4178	4239	4117	4081	4056	3995	4106
CRUDEOILM 21MAY2018	BEARISH	4100	4108	4121	4095	4087	4082	4069	4092
CRUDEOILM 19APR2018	BEARISH	4143.66	4177.33	4235.33	4119.33	4085.66	4061.33	4003.33	4110
CRUDEOILM 19MAR2018	BEARISH	4150.33	4192.66	4262.66	4122.66	4080.33	4052.66	3982.66	4108
CRUDEOILM 16FEB2018	BEARISH	4149.33	4192.66	4264.66	4120.66	4077.33	4048.66	3976.66	4106
GOLD 05JUN2018	BEARISH	30191.7	30298.3	30509.3	30087.33	29980.7	29876.3	29665.3	30085
GOLD 05APR2018	BEARISH	30102.3	30219.7	30446.7	29992.66	29875.3	29765.7	29538.7	29985
GOLD 27MAR2018	BULLISH	446.66	478.33	548.33	408.33	376.66	338.33	268.33	415
GOLD 27MAR2018	BEARISH	400.66	431.33	483.33	379.33	348.66	327.33	275.33	370

Registered Office:#15-8-1/2/3, 2nd floor, Slddiamber Bazar, Hyderabad - 500012, Telangana State. INDIA.

Corporate Office: #3-6-196/197, Pnme Plaza, 2nd floor, flat No. 204 A & B, H1mayath Nagar, Hyderabad - 500029, Telangana State.INDIA.

Ph:+91-40-64645000,Fax: +91-40-23262166,E-mail:support@basanonline.com,Website:[www.basanonline.com](http://www.basanonline.com)



# BASAN COMMODITY LIMITED

DAILY COMMODITY REPORT 31st Jan 2018

COMMODITIES	TREND	R1	R2	R3	PIVOT POINT	S1	S2	S3	Close
GOLD 27MAR2018	BEARISH	236.33	263.16	313.16	213.16	186.33	163.16	113.16	209.5
GOLD 27MAR2018	BULLISH	220.33	249.16	313.16	185.16	156.33	121.16	57.16	191.5
GOLD 27MAR2018	BULLISH	104	114	138	90	80	66	42	94
GOLD 05FEB2018	BEARISH	30163.3	30274.7	30490.7	30058.66	29947.3	29842.7	29626.7	30052
GOLDGUINEA 28MAR2018	BULLISH	24166.7	24223.3	24363.3	24083.33	24026.7	23943.3	23803.3	24110
GOLDGUINEA 28FEB2018	BULLISH	24189.7	24283.3	24471.3	24095.33	24001.7	23907.3	23719.3	24096
GOLDGUINEA 31JAN2018	BEARISH	24144	24674	25542	23806	23276	22938	22070	23614
GOLDM 05APR2018	BEARISH	30076.7	30179.3	30374.3	29984.33	29881.7	29789.3	29594.3	29974
GOLDM 05MAR2018	BEARISH	30063	30185	30412	29958	29836	29731	29504	29941
GOLDM 05FEB2018	BEARISH	30179.3	30306.7	30543.7	30069.66	29942.3	29832.7	29595.7	30052
GOLDPETAL 30APR2018	BEARISH	2998.66	3000.33	3003.33	2997.33	2995.66	2994.33	2991.33	2997
GOLDPETAL 28MAR2018	BULLISH	2995.33	3003.66	3020.66	2986.66	2978.33	2969.66	2952.66	2987
GOLDPETAL 28FEB2018	BEARISH	2991.66	3003.33	3026.33	2980.33	2968.66	2957.33	2934.33	2980
GOLDPETAL 31JAN2018	BULLISH	3051.33	3090.66	3180.66	3000.66	2961.33	2910.66	2820.66	3012
LEAD 30MAR2018	BULLISH	167.2	167.7	168.9	166.5	166	165.3	164.1	166.7
LEAD 28FEB2018	BEARISH	167.08	168.16	170.26	166.06	164.98	163.96	161.86	166
LEAD 31JAN2018	BEARISH	166.66	167.73	169.73	165.73	164.66	163.73	161.73	165.6
LEADMINI 30MAR2018	BEARISH	166.93	167.91	169.71	166.11	165.13	164.31	162.51	165.95
LEADMINI 28FEB2018	BEARISH	167.13	168.16	170.21	166.11	165.08	164.06	162.01	166.1
LEADMINI 31JAN2018	BEARISH	166.66	167.73	169.73	165.73	164.66	163.73	161.73	165.6
MENTHAOIL 29JUN2018	BEARISH	1258.76	1264.43	1274.53	1254.33	1248.66	1244.23	1234.13	1253.1
MENTHAOIL 31MAY2018	BULLISH	1399.6	1412.8	1439.8	1385.8	1372.6	1358.8	1331.8	1386.4
MENTHAOIL 30APR2018	BEARISH	1544.4	1568.7	1606.2	1531.2	1506.9	1493.7	1456.2	1520.1
MENTHAOIL 28MAR2018	BEARISH	1553.73	1579.66	1628.16	1531.16	1505.23	1482.66	1434.16	1527.8
MENTHAOIL 28FEB2018	BEARISH	1544.53	1572.76	1622.76	1522.76	1494.53	1472.76	1422.76	1516.3
MENTHAOIL 31JAN2018	BEARISH	1530	1553.1	1594.2	1512	1488.9	1470.9	1429.8	1506.9
NATURALGAS 25APR2018	BULLISH	191.93	192.96	195.26	190.66	189.63	188.36	186.06	190.9
NATURALGAS 26MAR2018	BULLISH	192.83	193.76	196.46	191.06	190.13	188.36	185.66	191.9
NATURALGAS 23FEB2018	BULLISH	209.5	211.4	216.7	206.1	204.2	200.8	195.5	207.6
NICKEL 31MAY2018	BULLISH	882.5	882.5	882.5	882.5	882.5	882.5	882.5	882.5
NICKEL 30MAR2018	BEARISH	870.53	884.66	906.56	862.76	848.63	840.86	818.96	856.4
NICKEL 28FEB2018	BEARISH	869.23	883.76	908.06	859.46	844.93	835.16	810.86	854.7
NICKEL 31JAN2018	BEARISH	866.16	880.83	905.53	856.13	841.46	831.43	806.73	851.5
NICKELM 31MAY2018	BULLISH	886.66	895.83	915.83	875.83	866.66	855.83	835.83	877.5
NICKELM 30APR2018	BULLISH	881.26	890.63	910.63	870.63	861.26	850.63	830.63	871.9
NICKELM 30MAR2018	BEARISH	874.46	889.93	915.43	864.43	848.96	838.93	813.43	859
NICKELM 28FEB2018	BEARISH	871.1	887.7	915	860.4	843.8	833.1	805.8	854.5

Registered Office:#15-8-1/2/3, 2nd floor, Slddiamber Bazar, Hyderabad - 500012, Telangana State. INDIA.

Corporate Office: #3-6-196/197, Pnme Plaza, 2nd floor, flat No. 204 A & B, H1mayath Nagar, Hyderabad - 500029, Telangana State.INDIA.

Ph:+91-40-64645000,Fax: +91-40-23262166,E-mail:support@basanonline.com,Website:[www.basanonline.com](http://www.basanonline.com)



# BASAN COMMODITY LIMITED

DAILY COMMODITY REPORT 31st Jan 2018

COMMODITIES	TREND	R1	R2	R3	PIVOT POINT	S1	S2	S3	Close
NICKELM 31JAN2018	BEARISH	866.33	881.46	906.76	856.16	841.03	830.86	805.56	851.2
SILVER 04MAY2018	BEARISH	39893	40114	40499	39729	39508	39344	38959	39672
SILVER 05MAR2018	BEARISH	39375.3	39627.7	40057.7	39197.66	38945.3	38767.7	38337.7	39123
SILVERM 31AUG2018	BULLISH	40929	40930	40932	40928	40927	40926	40924	40928
SILVERM 29JUN2018	BEARISH	40562	40780	41178	40382	40164	39984	39586	40344
SILVERM 30APR2018	BEARISH	39926.7	40141.3	40518.3	39764.33	39549.7	39387.3	39010.3	39712
SILVERM 28FEB2018	BEARISH	39394.7	39638.3	40058.3	39218.33	38974.7	38798.3	38378.3	39151
SILVERMIC 29JUN2018	BULLISH	40469	40585	40836	40334	40218	40083	39832	40353
SILVERMIC 30APR2018	BEARISH	39935	40152	40534	39770	39553	39388	39006	39718
SILVERMIC 28FEB2018	BEARISH	39392.7	39630.3	40038.3	39222.33	38984.7	38814.3	38406.3	39155
ZINC 30MAR2018	BEARISH	225.86	227.03	229.08	224.98	223.81	222.93	220.88	224.7
ZINC 28FEB2018	BEARISH	226.6	228.1	230.75	225.45	223.95	222.8	220.15	225.1
ZINC 31JAN2018	BEARISH	228.11	229.48	231.93	227.03	225.66	224.58	222.13	226.75
ZINCMINI 30MAR2018	BEARISH	226.5	228.45	231.75	225.15	223.2	221.85	218.55	224.55
ZINCMINI 28FEB2018	BEARISH	226.65	228.2	230.9	225.5	223.95	222.8	220.1	225.1
ZINCMINI 31JAN2018	BEARISH	228.25	229.75	232.4	227.1	225.6	224.45	221.8	226.75

Registered Office:#15-8-1/2/3, 2nd floor, Sllddiamber Bazar, Hyderabad - 500012, Telangana State. INDIA.

Corporate Office: #3-6-196/197, Pnme Plaza, 2nd floor, flat No. 204 A & B, H1mayath Nagar, Hyderabad - 500029, Telangana State.INDIA.

Ph:+91-40-64645000,Fax: +91-40-23262166,E-mail:support@basanonline.com,Website:[www.basanonline.com](http://www.basanonline.com)