



BASAN COMMODITY LIMITED

DAILY COMMODITY REPORT 25th Jan 2018

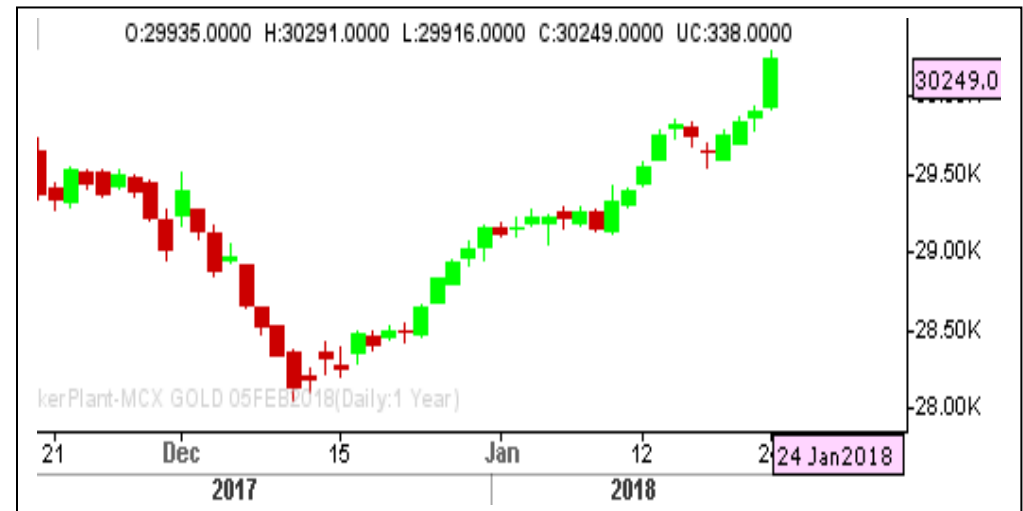
GOLD STRONG

RANGE : 30100 - 30500

What Chart Says :

Feb Gold prices opened at 29935 levels extended its gains towards 30291 levels and finished its day at 30249 levels.

Charts are looking strong for medium term and Prices are likely to trade sideways to higher towards 30500 followed by 30800 levels. Prices must close below 29900 levels to change our bullish bias.



SILVER BULLISH

RANGE : 39500 - 40500

What Chart Says :

Mar Silver prices settled at 39707 levels, rallied from the beginning of the sessions at 38850 levels.

Mar Silver prices has turned strong. Prices are likely to continue its positive momentum towards 40000 followed by 40500 levels in near term. Any strong break and close below 39000 only can change our bullish bias.

Buy on dips with stop below 39000 for the targets of 40500 and 41000 levels.



Registered Office:#15-8-1/2/3, 2nd floor, Sliddiamber Bazar, Hyderabad - 500012, Telangana State. INDIA.

Corporate Office: #3-6-196/197, Pnme Plaza, 2nd floor, flat No. 204 A & B, H1mayath Nagar, Hyderabad - 500029, Telangana State.INDIA.

Ph:+91-40-64645000,Fax: +91-40-23262166,E-mail:support@basanonline.com,Website:www.basanonline.com



BASAN COMMODITY LIMITED

DAILY COMMODITY REPORT 25th Jan 2018

CRUDE OIL FIRM

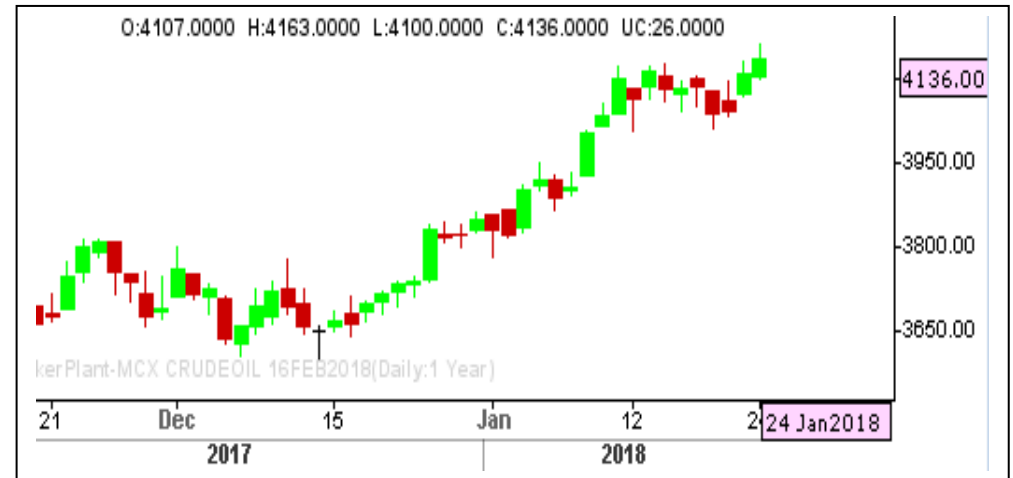
RANGE : 4100 - 4200

What Chart Says :

Feb Crude Oil has opened at 4107 levels and gained its positive momentum to settle at 4136 levels by posting a high of 4163 levels.

As prices has strongly settled over key 3120 levels after consolidating, Prices are likely to extend its gains towards 4160 followed 4200 levels.

Buy on dips with stop below 4100 for the targets of 4200 levels followed by 4260 levels.



ZINC POSITIVE

RANGE : 218.00 - 222.00

What Chart Says :

Jan Zinc has settled at 220.50 levels, regained its strength from day's low of 216.60 levels.

Any strong close below 216 only can shift its trend to bearish again. Till then our bias remains firm targeting 222 followed by 225 levels.



Registered Office:#15-8-1/2/3, 2nd floor, Sliddiamber Bazar, Hyderabad - 500012, Telangana State. INDIA.

Corporate Office: #3-6-196/197, Pnme Plaza, 2nd floor, flat No. 204 A & B, H1mayath Nagar, Hyderabad - 500029, Telangana State.INDIA.

Ph:+91-40-64645000,Fax: +91-40-23262166,E-mail:support@basanonline.com,Website:www.basanonline.com



BASAN COMMODITY LIMITED

DAILY COMMODITY REPORT 25th Jan 2018

COMMODITIES	TREND	R1	R2	R3	PIVOT POINT	S1	S2	S3	Close
ALUMINI 30MAR2018	BULLISH	143.83	145.36	148.76	141.96	140.43	138.56	135.16	142.3
ALUMINI 28FEB2018	BULLISH	143.71	144.58	146.88	142.28	141.41	139.98	137.68	142.85
ALUMINI 31JAN2018	BULLISH	143.71	144.68	147.23	142.13	141.16	139.58	137.03	142.75
ALUMINIUM 30MAR2018	BULLISH	143.25	143.7	144.6	142.8	142.35	141.9	141	142.8
ALUMINIUM 28FEB2018	BULLISH	143.76	144.68	147.08	142.28	141.36	139.88	137.48	142.85
ALUMINIUM 31JAN2018	BULLISH	143.71	144.68	147.23	142.13	141.16	139.58	137.03	142.75
CARDAMOM 15MAR2018	BEARISH	1158.83	1167.86	1183.76	1151.96	1142.93	1136.06	1120.16	1149.8
CARDAMOM 15FEB2018	BEARISH	1144.76	1152.03	1164.13	1139.93	1132.66	1127.83	1115.73	1137.5
COPPER 29JUN2018	BEARISH	460.56	466.48	477.68	455.28	449.36	444.08	432.88	454.65
COPPER 30APR2018	BULLISH	462.6	467.75	481.5	454	448.85	440.25	426.5	457.45
COPPER 28FEB2018	BULLISH	459.96	465.83	481.18	450.48	444.61	435.13	419.78	454.1
COPPERM 29JUN2018	BULLISH	466.16	470.78	483.68	457.88	453.26	444.98	432.08	461.55
COPPERM 30APR2018	BULLISH	462.61	467.93	481.88	453.98	448.66	440.03	426.08	457.3
COPPERM 28FEB2018	BULLISH	459.86	465.58	480.53	450.63	444.91	435.68	420.73	454.15
COTFEBMA18 28FEB2018	BULLISH	213.33	216.66	226.66	206.66	203.33	196.66	186.66	210
COTJANFE18 31JAN2018	BULLISH	253.33	276.66	336.66	216.66	193.33	156.66	96.66	230
COTJANMA18 31JAN2018	BULLISH	400	400	400	400	400	400	400	400
COTTON 30APR2018	BULLISH	21100	21160	21280	21040	20980	20920	20800	21040
COTTON 30MAR2018	BEARISH	20913.3	21086.7	21376.7	20796.66	20623.3	20506.7	20216.7	20740
COTTON 28FEB2018	BEARISH	20726.7	20923.3	21243.3	20603.33	20406.7	20283.3	19963.3	20530
COTTON 31JAN2018	BEARISH	20533.3	20756.7	21116.7	20396.66	20173.3	20036.7	19676.7	20310
CPO 30APR2018	BULLISH	577.93	580.96	587.96	573.96	570.93	566.96	559.96	574.9
CPO 28MAR2018	BULLISH	577.06	580.03	588.03	572.03	569.06	564.03	556.03	574.1
CPO 28FEB2018	BULLISH	575.36	578.93	588.43	569.43	565.86	559.93	550.43	571.8
CPO 31JAN2018	BULLISH	564.73	566.96	572.76	561.16	558.93	555.36	549.56	562.5
CRUDEOIL 19JUN2018	BEARISH	4126.33	4138.66	4161.66	4115.66	4103.33	4092.66	4069.66	4114
CRUDEOIL 21MAY2018	BULLISH	4118	4120	4124	4116	4114	4112	4108	4116
CRUDEOIL 19APR2018	BEARISH	4139.33	4159.66	4198.66	4120.66	4100.33	4081.66	4042.66	4119
CRUDEOIL 19MAR2018	BULLISH	4160	4189	4248	4130	4101	4071	4012	4131
CRUDEOIL 16FEB2018	BULLISH	4166	4196	4259	4133	4103	4070	4007	4136
CRUDEOILM 19JUN2018	BULLISH	4124	4124	4124	4124	4124	4124	4124	4124
CRUDEOILM 19APR2018	BEARISH	4150.33	4178.66	4234.66	4122.66	4094.33	4066.66	4010.66	4122
CRUDEOILM 19MAR2018	BULLISH	4160	4187	4244	4130	4103	4073	4016	4133
CRUDEOILM 16FEB2018	BULLISH	4165.66	4195.33	4257.33	4133.33	4103.66	4071.33	4009.33	4136
GOLD 05JUN2018	BULLISH	30428.7	30549.3	30879.3	30219.33	30098.7	29889.3	29559.3	30308
GOLD 05APR2018	BULLISH	30353.3	30490.7	30869.7	30111.66	29974.3	29732.7	29353.7	30216
GOLD 05FEB2018	BULLISH	30388	30527	30902	30152	30013	29777	29402	30249

Registered Office:#15-8-1/2/3, 2nd floor, Slddiamber Bazar, Hyderabad - 500012, Telangana State. INDIA.

Corporate Office: #3-6-196/197, Pnme Plaza, 2nd floor, flat No. 204 A & B, H1mayath Nagar, Hyderabad - 500029, Telangana State.INDIA.

Ph:+91-40-64645000,Fax: +91-40-23262166,E-mail:support@basanonline.com,Website:www.basanonline.com



BASAN COMMODITY LIMITED

DAILY COMMODITY REPORT 25th Jan 2018

COMMODITIES	TREND	R1	R2	R3	PIVOT POINT	S1	S2	S3	Close
GOLD 29JAN2018	BEARISH	8.33	11.16	16.16	6.16	3.33	1.16	-3.83	5.5
GOLD 29JAN2018	BEARISH	799	824.5	874.5	774.5	749	724.5	674.5	773.5
GOLD 29JAN2018	BULLISH	76.16	101.33	157.83	44.83	19.66	-11.66	-68.16	51
GOLD 29JAN2018	BULLISH	722	858	1135	581	445	304	27	586
GOLD 29JAN2018	BULLISH	699	699	699	699	699	699	699	699
GOLD 29JAN2018	BEARISH	49.66	59.83	79.83	39.83	29.66	19.83	-0.16	39.5
GOLD 29JAN2018	BEARISH	409	496	662.5	329.5	242.5	163	-3.5	322
GOLD 29JAN2018	BEARISH	323.66	399.83	542.83	256.83	180.66	113.83	-29.16	247.5
GOLD 29JAN2018	BULLISH	305.33	380.16	585.16	175.16	100.33	-29.83	-234.83	230.5
GOLD 29JAN2018	BULLISH	2	2	2	2	2	2	2	2
GOLD 29JAN2018	BULLISH	1240	1353	1611	1095	982	837	579	1127
GOLD 29JAN2018	BEARISH	12.66	17.33	25.33	9.33	4.66	1.33	-6.66	8
GOLDGUINEA 28FEB2018	BULLISH	24241	24338	24618	24058	23961	23778	23498	24144
GOLDGUINEA 31JAN2018	BULLISH	24689.7	24957.3	25552.3	24362.33	24094.7	23767.3	23172.3	24422
GOLDM 05APR2018	BULLISH	30301.7	30416.3	30737.3	30095.33	29980.7	29774.3	29453.3	30187
GOLDM 05MAR2018	BULLISH	30275.7	30407.3	30766.3	30048.33	29916.7	29689.3	29330.3	30144
GOLDM 05FEB2018	BULLISH	30396.3	30548.7	30959.7	30137.66	29985.3	29726.7	29315.7	30244
GOLDPETAL 28MAR2018	BEARISH	3014	3035	3076	2994	2973	2953	2912	2993
GOLDPETAL 28FEB2018	BULLISH	2998	3007	3031	2983	2974	2959	2935	2989
GOLDPETAL 31JAN2018	BULLISH	3028	3047	3096	2998	2979	2949	2900	3009
LEAD 30MAR2018	BULLISH	169.4	170.45	173.25	167.65	166.6	164.85	162.05	168.35
LEAD 28FEB2018	BULLISH	169.2	170.4	173.25	167.55	166.35	164.7	161.85	168
LEAD 31JAN2018	BULLISH	169.06	170.48	173.78	167.18	165.76	163.88	160.58	167.65
LEADMINI 30APR2018	BULLISH	167.6	167.6	167.6	167.6	167.6	167.6	167.6	167.6
LEADMINI 30MAR2018	BULLISH	169.36	171.58	176.93	166.23	164.01	160.88	155.53	167.15
LEADMINI 28FEB2018	BULLISH	169.16	170.38	173.28	167.48	166.26	164.58	161.68	167.95
LEADMINI 31JAN2018	BULLISH	169.01	170.38	173.58	167.18	165.81	163.98	160.78	167.65
MENTHAOIL 29JUN2018	BEARISH	1256.6	1271.3	1297.3	1245.3	1230.6	1219.3	1193.3	1241.9
MENTHAOIL 30APR2018	BULLISH	1568.7	1578	1601.3	1554.7	1545.4	1531.4	1508.1	1559.4
MENTHAOIL 28MAR2018	BEARISH	1553.63	1571.76	1602.66	1540.86	1522.73	1509.96	1479.06	1535.5
MENTHAOIL 28FEB2018	BEARISH	1535	1554	1586.5	1521.5	1502.5	1489	1456.5	1516
MENTHAOIL 31JAN2018	BEARISH	1520.36	1538.43	1570.13	1506.73	1488.66	1475.03	1443.33	1502.3
NATURALGAS 26MAR2018	BEARISH	185.26	187.13	190.13	184.13	182.26	181.13	178.13	183.4
NATURALGAS 23FEB2018	BEARISH	198.83	202.16	207.56	196.76	193.43	191.36	185.96	195.5
NATURALGAS 25JAN2018	BEARISH	228.43	234.56	244.76	224.36	218.23	214.16	203.96	222.3
NICKEL 31MAY2018	BULLISH	847.8	848.4	849.8	847	846.4	845.6	844.2	847.2
NICKEL 30APR2018	BEARISH	853	861.5	877	846	837.5	830.5	815	844.5

Registered Office:#15-8-1/2/3, 2nd floor, Slddiamber Bazar, Hyderabad - 500012, Telangana State. INDIA.

Corporate Office: #3-6-196/197, Pnme Plaza, 2nd floor, flat No. 204 A & B, H1mayath Nagar, Hyderabad - 500029, Telangana State.INDIA.

Ph:+91-40-64645000,Fax: +91-40-23262166,E-mail:support@basanonline.com,Website:www.basanonline.com



BASAN COMMODITY LIMITED

DAILY COMMODITY REPORT 25th Jan 2018

COMMODITIES	TREND	R1	R2	R3	PIVOT POINT	S1	S2	S3	Close
NICKEL 30MAR2018	BULLISH	881.36	898.63	946.13	851.13	833.86	803.63	756.13	864.1
NICKEL 28FEB2018	BULLISH	881.33	902.16	957.46	846.86	826.03	791.56	736.26	860.5
NICKEL 31JAN2018	BULLISH	879.3	901.1	958.8	843.4	821.6	785.7	728	857.5
NICKELM 30MAR2018	BULLISH	882.83	900.36	949.16	851.56	834.03	802.76	753.96	865.3
NICKELM 28FEB2018	BULLISH	881.43	902.36	957.66	847.06	826.13	791.76	736.46	860.5
NICKELM 31JAN2018	BULLISH	879.23	900.86	958.26	843.46	821.83	786.06	728.66	857.6
SILVER 04MAY2018	BULLISH	40514.3	40805.7	41658.7	39952.66	39661.3	39099.7	38246.7	40223
SILVER 05MAR2018	BULLISH	40038	40369	41294	39444	39113	38519	37594	39707
SILVERM 29JUN2018	BULLISH	40880.7	41152.3	41851.3	40453.33	40181.7	39754.3	39055.3	40609
SILVERM 30APR2018	BULLISH	40524.3	40821.7	41674.7	39968.66	39671.3	39115.7	38262.7	40227
SILVERM 28FEB2018	BULLISH	40049.3	40372.7	41278.7	39466.66	39143.3	38560.7	37654.7	39726
SILVERMIC 29JUN2018	BULLISH	40907	41200	41983	40417	40124	39634	38851	40614
SILVERMIC 30APR2018	BULLISH	40544.3	40857.7	41768.7	39946.66	39633.3	39035.7	38124.7	40231
SILVERMIC 28FEB2018	BULLISH	40040.7	40358.3	41252.3	39464.33	39146.7	38570.3	37676.3	39723
ZINC 30MAR2018	BULLISH	220.76	222.08	225.58	218.58	217.26	215.08	211.58	219.45
ZINC 28FEB2018	BULLISH	221.15	222.65	226.55	218.75	217.25	214.85	210.95	219.65
ZINC 31JAN2018	BULLISH	222.26	224.03	228.63	219.43	217.66	214.83	210.23	220.5
ZINCMINI 30MAR2018	BULLISH	220.75	222.1	225.6	218.6	217.25	215.1	211.6	219.4
ZINCMINI 28FEB2018	BULLISH	221.08	222.56	226.41	218.71	217.23	214.86	211.01	219.6
ZINCMINI 31JAN2018	BULLISH	222.26	224.03	228.63	219.43	217.66	214.83	210.23	220.5

Registered Office:#15-8-1/2/3, 2nd floor, Slddiamber Bazar, Hyderabad - 500012, Telangana State. INDIA.

Corporate Office: #3-6-196/197, Pnme Plaza, 2nd floor, flat No. 204 A & B, H1mayath Nagar, Hyderabad - 500029, Telangana State.INDIA.

Ph:+91-40-64645000,Fax: +91-40-23262166,E-mail:support@basanonline.com,Website:www.basanonline.com