



# BASAN COMMODITY LIMITED

DAILY COMMODITY REPORT 24th Jan 2018

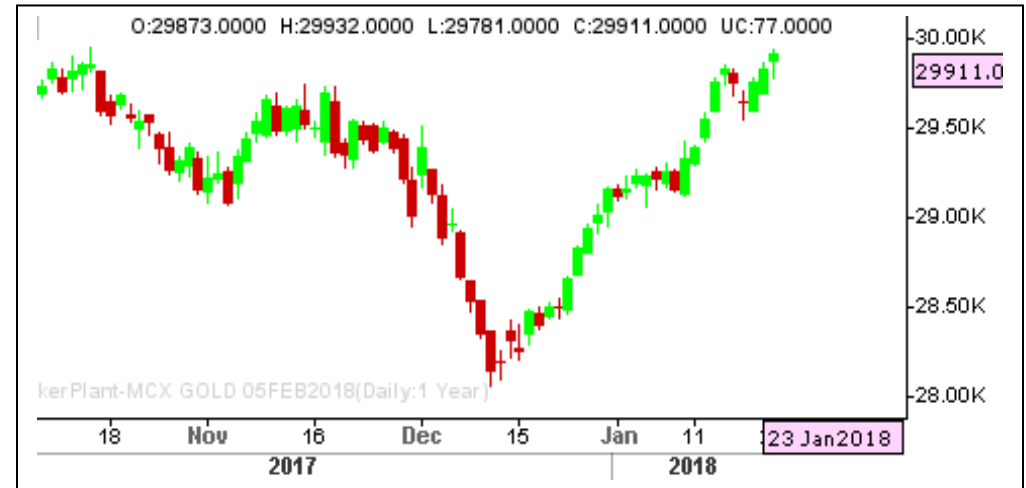
## GOLD STRONG

RANGE : 29800 - 30100

### What Chart Says :

Feb Gold prices opened at 29873, posted a low of 29781 levels and regained its positive sentiment to settle at 29911 levels.

Charts are looking strong for medium term and Prices are likely to trade sideways to higher towards 29980 followed by 30050 levels. Prices must close below 29550 levels to change our bearish bias.



## SILVER MIXED

RANGE : 38500 - 39500

### What Chart Says :

Mar Silver prices settled at 38733 levels by posting a low of 38402 levels.

Mar Silver prices are looking weak. But to continue its weakness prices must sustain below 38500 levels. Any breakout failure of 38500 can push prices higher again.



Registered Office:#15-8-1/2/3, 2nd floor, Slddiamber Bazar, Hyderabad - 500012, Telangana State. INDIA.

Corporate Office: #3-6-196/197, Pnme Plaza, 2nd floor, flat No. 204 A & B, H1mayath Nagar, Hyderabad - 500029, Telangana State.INDIA.

Ph:+91-40-64645000,Fax: +91-40-23262166,E-mail:support@basanonline.com,Website:[www.basanonline.com](http://www.basanonline.com)



# BASAN COMMODITY LIMITED

DAILY COMMODITY REPORT 24th Jan 2018

## CRUDE OIL MIXED

RANGE : 4040 - 4120

### What Chart Says :

Jan Crude Oil has opened at 4075 levels and gained its positive momentum to settle at 4110 levels.

For the past seven sessions prices has been struggling to find one direction. Prices has been confined to 4020 - 4120 levels. Jan prices must clear 4120 levels to attract additional gains.



## ZINC MIXED

RANGE : 216.00 - 222.00

### What Chart Says :

Jan Zinc has settled at 218.90 levels, declined from day's high of 220.30 levels.

Any strong close below 216 only can shift its trend to bearish again. At the same time 220-221 range is also acting as strong resistance levels. Breakout failure of 221 levels could put some pressure on prices.



Registered Office:#15-8-1/2/3, 2nd floor, Sliddiamber Bazar, Hyderabad - 500012, Telangana State. INDIA.

Corporate Office: #3-6-196/197, Pnme Plaza, 2nd floor, flat No. 204 A & B, H1mayath Nagar, Hyderabad - 500029, Telangana State.INDIA.

Ph:+91-40-64645000,Fax: +91-40-23262166,E-mail:support@basanonline.com,Website:[www.basanonline.com](http://www.basanonline.com)



# BASAN COMMODITY LIMITED

DAILY COMMODITY REPORT 24th Jan 2018

COMMODITIES	TREND	R1	R2	R3	PIVOT POINT	S1	S2	S3	Close
ALUMINI 30MAR2018	BEARISH	143.06	143.78	145.03	142.53	141.81	141.28	140.03	142.35
ALUMINI 28FEB2018	BEARISH	143.23	144.46	146.71	142.21	140.98	139.96	137.71	142
ALUMINI 31JAN2018	BEARISH	143.2	144.55	147.15	141.95	140.6	139.35	136.75	141.85
ALUMINIUM 30MAR2018	BULLISH	143.65	144.5	146.2	142.8	141.95	141.1	139.4	142.8
ALUMINIUM 28FEB2018	BEARISH	143.2	144.4	146.6	142.2	141	140	137.8	142
ALUMINIUM 31JAN2018	BEARISH	143.15	144.45	146.9	142	140.7	139.55	137.1	141.85
CARDAMOM 15MAR2018	BEARISH	1160.06	1166.03	1177.03	1155.03	1149.06	1144.03	1133.03	1154.1
CARDAMOM 15FEB2018	BEARISH	1144.13	1149.56	1159.56	1139.56	1134.13	1129.56	1119.56	1138.7
COPPER 29JUN2018	BULLISH	455.4	458.6	465.4	451.8	448.6	445	438.2	452.2
COPPER 30APR2018	BEARISH	452.96	461.88	475.58	448.18	439.26	434.48	420.78	444.05
COPPER 28FEB2018	BEARISH	449.1	458.25	472.25	444.25	435.1	430.25	416.25	439.95
COPPERM 29JUN2018	BEARISH	456.8	464.55	476.95	452.15	444.4	439.75	427.35	449.05
COPPERM 30APR2018	BEARISH	452.95	461.9	475.55	448.25	439.3	434.6	420.95	444
COPPERM 28FEB2018	BEARISH	449.08	458.16	472.06	444.26	435.18	430.36	416.46	440
COTFEBMA18 28FEB2018	BEARISH	203.33	216.66	236.66	196.66	183.33	176.66	156.66	190
COTJANFE18 31JAN2018	BEARISH	193.33	206.66	226.66	186.66	173.33	166.66	146.66	180
COTTON 30MAR2018	BEARISH	21200	21410	21740	21080	20870	20750	20420	20990
COTTON 28FEB2018	BEARISH	21003.3	21216.7	21556.7	20876.66	20663.3	20536.7	20196.7	20790
COTTON 31JAN2018	BEARISH	20803.3	20996.7	21306.7	20686.66	20493.3	20376.7	20066.7	20610
CPO 30APR2018	BULLISH	571.36	573.73	579.83	567.63	565.26	561.53	555.43	569
CPO 28MAR2018	BULLISH	570.06	572.93	581.23	564.63	561.76	556.33	548.03	567.2
CPO 28FEB2018	BULLISH	567.96	571.23	580.23	562.23	558.96	553.23	544.23	564.7
CPO 31JAN2018	BULLISH	563.13	567.16	577.66	556.66	552.63	546.16	535.66	559.1
CRUDEOIL 21MAY2018	BULLISH	4083.33	4083.66	4084.66	4082.66	4082.33	4081.66	4080.66	4083
CRUDEOIL 19APR2018	BULLISH	4123.66	4140.33	4179.33	4101.33	4084.66	4062.33	4023.33	4107
CRUDEOIL 19MAR2018	BULLISH	4137.33	4164.66	4225.66	4103.66	4076.33	4042.66	3981.66	4110
CRUDEOIL 16FEB2018	BULLISH	4138.33	4166.66	4229.66	4103.66	4075.33	4040.66	3977.66	4110
CRUDEOILM 19JUN2018	BULLISH	4088	4088	4088	4088	4088	4088	4088	4088
CRUDEOILM 19APR2018	BULLISH	4138	4162	4218	4106	4082	4050	3994	4114
CRUDEOILM 19MAR2018	BULLISH	4137.66	4164.33	4224.33	4104.33	4077.66	4044.33	3984.33	4111
CRUDEOILM 16FEB2018	BULLISH	4142.66	4175.33	4251.33	4099.33	4066.66	4023.33	3947.33	4110
GOLD 05JUN2018	BULLISH	30034.3	30053.7	30107.7	29999.66	29980.3	29945.7	29891.7	30015
GOLD 05APR2018	BULLISH	29925.3	29976.7	30114.7	29838.66	29787.3	29700.7	29562.7	29874
GOLD 05FEB2018	BULLISH	29968.3	30025.7	30176.7	29874.66	29817.3	29723.7	29572.7	29911
GOLD 29JAN2018	BEARISH	892	921	971	871	842	821	771	863
GOLD 29JAN2018	BULLISH	550	550	550	550	550	550	550	550
GOLD 29JAN2018	BULLISH	52	60	81	39	31	18	-3	44

Registered Office:#15-8-1/2/3, 2nd floor, Slddiamber Bazar, Hyderabad - 500012, Telangana State. INDIA.

Corporate Office: #3-6-196/197, Pnme Plaza, 2nd floor, flat No. 204 A & B, H1mayath Nagar, Hyderabad - 500029, Telangana State.INDIA.

Ph:+91-40-64645000,Fax: +91-40-23262166,E-mail:support@basanonline.com,Website:[www.basanonline.com](http://www.basanonline.com)



# BASAN COMMODITY LIMITED

DAILY COMMODITY REPORT 24th Jan 2018

COMMODITIES	TREND	R1	R2	R3	PIVOT POINT	S1	S2	S3	Close
GOLD 29JAN2018	BULLISH	4	4.5	5.5	3.5	3	2.5	1.5	3.5
GOLD 29JAN2018	BEARISH	363.66	382.83	413.83	351.83	332.66	320.83	289.83	344.5
GOLD 29JAN2018	BULLISH	30.33	36.16	48.16	24.16	18.33	12.16	0.16	24.5
GOLD 29JAN2018	BULLISH	200	200	200	200	200	200	200	200
GOLD 29JAN2018	BULLISH	2.66	3.33	4.83	1.83	1.16	0.33	-1.16	2
GOLD 29JAN2018	BEARISH	158	209	309	109	58	9	-91	107
GOLD 29JAN2018	BULLISH	1369	1394.5	1447.5	1341.5	1316	1288.5	1235.5	1343.5
GOLD 29JAN2018	BEARISH	11.5	14.5	20	9	6	3.5	-2	8.5
GOLD 29JAN2018	BULLISH	11.16	12.83	16.33	9.33	7.66	5.83	2.33	9.5
GOLDGUINEA 28FEB2018	BEARISH	23896.3	23935.7	24010.7	23860.66	23821.3	23785.7	23710.7	23857
GOLDGUINEA 31JAN2018	BULLISH	24051.7	24080.3	24147.3	24013.33	23984.7	23946.3	23879.3	24023
GOLDM 05APR2018	BULLISH	29912.3	29962.7	30085.7	29839.66	29789.3	29716.7	29593.7	29862
GOLDM 05MAR2018	BULLISH	29866.3	29925.7	30062.7	29788.66	29729.3	29651.7	29514.7	29807
GOLDM 05FEB2018	BULLISH	29949.3	30022.7	30194.7	29850.66	29777.3	29678.7	29506.7	29876
GOLDPETAL 28MAR2018	BULLISH	2973.66	2976.33	2982.33	2970.33	2967.66	2964.33	2958.33	2971
GOLDPETAL 28FEB2018	BULLISH	2972	2976	2986	2966	2962	2956	2946	2968
GOLDPETAL 31JAN2018	BEARISH	2972.66	2978.33	2988.33	2968.33	2962.66	2958.33	2948.33	2967
LEAD 30MAR2018	BEARISH	167.48	168.36	169.81	166.91	166.03	165.46	164.01	166.6
LEAD 28FEB2018	BEARISH	168.01	169.28	171.48	167.08	165.81	164.88	162.68	166.75
LEAD 31JAN2018	BEARISH	167.85	169.35	171.95	166.75	165.25	164.15	161.55	166.35
LEADMINI 30MAR2018	BEARISH	167.81	168.73	170.38	167.08	166.16	165.43	163.78	166.9
LEADMINI 28FEB2018	BEARISH	168.06	169.33	171.58	167.08	165.81	164.83	162.58	166.8
LEADMINI 31JAN2018	BEARISH	167.85	169.3	171.85	166.75	165.3	164.2	161.65	166.4
MENTHAOIL 29JUN2018	BEARISH	1249.33	1255.66	1267.66	1243.66	1237.33	1231.66	1219.66	1243
MENTHAOIL 30APR2018	BEARISH	1590.4	1616.2	1667.2	1565.2	1539.4	1514.2	1463.2	1564.6
MENTHAOIL 28MAR2018	BULLISH	1591.53	1612.46	1666.66	1558.26	1537.33	1504.06	1449.86	1570.6
MENTHAOIL 28FEB2018	BULLISH	1575.46	1598.73	1658.73	1538.73	1515.46	1478.73	1418.73	1552.2
MENTHAOIL 31JAN2018	BULLISH	1557.76	1581.83	1643.73	1519.93	1495.86	1458.03	1396.13	1533.7
NATURALGAS 26MAR2018	BULLISH	184.6	185.8	188.8	182.8	181.6	179.8	176.8	183.4
NATURALGAS 23FEB2018	BULLISH	197	199.3	205.2	193.4	191.1	187.5	181.6	194.7
NATURALGAS 25JAN2018	BULLISH	224.2	229.1	242.6	215.6	210.7	202.1	188.6	219.3
NICKEL 31MAY2018	BULLISH	838.5	838.5	838.5	838.5	838.5	838.5	838.5	838.5
NICKEL 30APR2018	BULLISH	832.5	837.6	850.3	824.9	819.8	812.2	799.5	827.4
NICKEL 30MAR2018	BULLISH	829.73	834.86	846.36	823.36	818.23	811.86	800.36	824.6
NICKEL 28FEB2018	BULLISH	828.2	835.9	854.2	817.6	809.9	799.3	781	820.5
NICKEL 31JAN2018	BULLISH	824.06	831.83	850.73	812.93	805.16	794.03	775.13	816.3
NICKELM 30MAR2018	BULLISH	828.2	833	843.7	822.3	817.5	811.6	800.9	823.4

Registered Office:#15-8-1/2/3, 2nd floor, Slddiamber Bazar, Hyderabad - 500012, Telangana State. INDIA.

Corporate Office: #3-6-196/197, Pnme Plaza, 2nd floor, flat No. 204 A & B, H1mayath Nagar, Hyderabad - 500029, Telangana State.INDIA.

Ph:+91-40-64645000,Fax: +91-40-23262166,E-mail:support@basanonline.com,Website:[www.basanonline.com](http://www.basanonline.com)



# BASAN COMMODITY LIMITED

DAILY COMMODITY REPORT 24th Jan 2018

COMMODITIES	TREND	R1	R2	R3	PIVOT POINT	S1	S2	S3	Close
NICKELM 28FEB2018	BULLISH	828.23	835.86	854.06	817.66	810.03	799.46	781.26	820.6
NICKELM 31JAN2018	BULLISH	823.9	831.5	850.1	812.9	805.3	794.3	775.7	816.3
SILVER 04MAY2018	BEARISH	39586	39909	40530	39288	38965	38667	38046	39263
SILVER 05MAR2018	BEARISH	39078.7	39424.3	40108.3	38740.33	38394.7	38056.3	37372.3	38733
SILVERM 29JUN2018	BEARISH	39900.3	40142.7	40527.7	39757.66	39515.3	39372.7	38987.7	39658
SILVERM 30APR2018	BEARISH	39627.7	39949.3	40574.3	39324.33	39002.7	38699.3	38074.3	39306
SILVERM 28FEB2018	BEARISH	39084.7	39412.3	40057.3	38767.33	38439.7	38122.3	37477.3	38757
SILVERMIC 29JUN2018	BEARISH	40072.7	40398.3	40957.3	39839.33	39513.7	39280.3	38721.3	39747
SILVERMIC 30APR2018	BEARISH	39612.7	39926.3	40533.3	39319.33	39005.7	38712.3	38105.3	39299
SILVERMIC 28FEB2018	BEARISH	39085.3	39409.7	40048.7	38770.66	38446.3	38131.7	37492.7	38761
ZINC 30MAR2018	BEARISH	219.13	219.76	220.76	218.76	218.13	217.76	216.76	218.5
ZINC 28FEB2018	BEARISH	219.31	220.18	221.68	218.68	217.81	217.18	215.68	218.45
ZINC 31JAN2018	BEARISH	219.91	220.93	222.58	219.28	218.26	217.63	215.98	218.9
ZINCMINI 30MAR2018	BEARISH	218.93	219.41	220.36	218.46	217.98	217.51	216.56	218.45
ZINCMINI 28FEB2018	BEARISH	219.28	220.16	221.66	218.66	217.78	217.16	215.66	218.4
ZINCMINI 31JAN2018		219.93	220.91	222.51	219.31	218.33	217.71	216.11	218.95

Registered Office:#15-8-1/2/3, 2nd floor, Sllddiamber Bazar, Hyderabad - 500012, Telangana State. INDIA.

Corporate Office: #3-6-196/197, Pnme Plaza, 2nd floor, flat No. 204 A & B, H1mayath Nagar, Hyderabad - 500029, Telangana State.INDIA.

Ph:+91-40-64645000,Fax: +91-40-23262166,E-mail:support@basanonline.com,Website:[www.basanonline.com](http://www.basanonline.com)