



# BASAN COMMODITY LIMITED

DAILY COMMODITY REPORT 19th Jan 2018

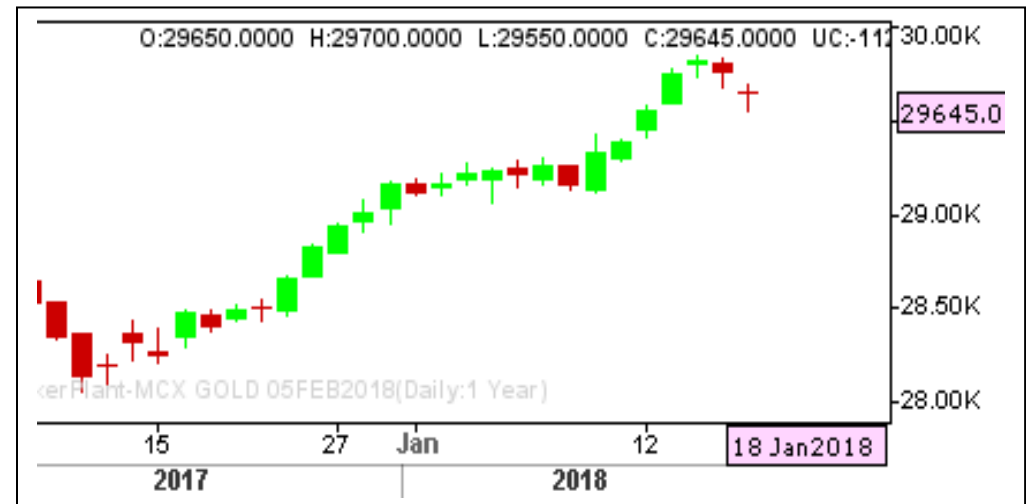
## GOLD BEARISH

RANGE : 29800 - 29500

### What Chart Says :

Feb Gold prices opened at 29650, posted a low of 29550 levels and finally settled almost flat at 29645 levels.

All intraday charts are at overbought zone, leaving some negative signs for the time being. Any breakout failure of 29800 levels can put some pressure on prices, targeting 29500 followed by 29350 levels.



## SILVER WEAK

RANGE : 39200 - 38500

### What Chart Says :

Mar Silver has settled lower for the third consecutive session at 38917 levels.

For the day trend remains weak. Mar prices are likely to trade sideways to lower towards 38500 followed by 38350 levels. Any decisive break and close above 39200 can change our bullish bias.

**Sell on rallies with stop above 39200 levels, targeting 38500 followed by 38350 levels.**



Registered Office:#15-8-1/2/3, 2nd floor, Slddiamber Bazar, Hyderabad - 500012, Telangana State. INDIA.

Corporate Office: #3-6-196/197, Pnme Plaza, 2nd floor, flat No. 204 A & B, H1mayath Nagar, Hyderabad - 500029, Telangana State.INDIA.

Ph:+91-40-64645000,Fax: +91-40-23262166,E-mail:support@basanonline.com,Website:[www.basanonline.com](http://www.basanonline.com)



# BASAN COMMODITY LIMITED

DAILY COMMODITY REPORT 19th Jan 2018

## CRUDE OIL STRONG

RANGE : 4080 - 4150

### What Chart Says :

Jan Crude Oil has opened at 4100 levels and ended its day at 4088 levels by posting a low of 4052.

For the past six sessions prices has been struggling to find one direction. Prices has been confined to 4050 - 4120 levels. Jan prices must clear either side to attract any strong direction.

Awaiting for clear confirmation.



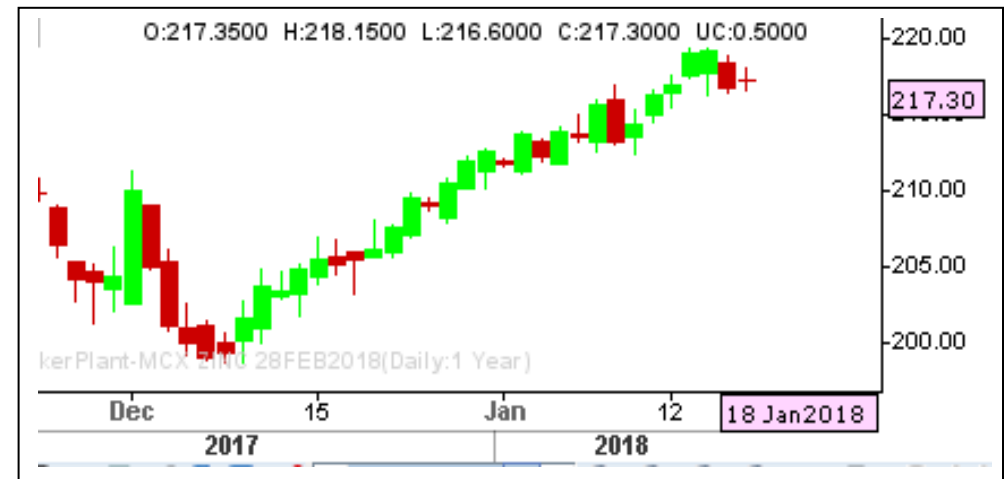
## ZINC MIXED

RANGE : 217.00 - 222.00

### What Chart Says :

Dec Zinc has settled flat at 217.30 levels, leaving some mixed signs.

Today's close is crucial to confirm further trend. Any strong close below 216 can shift its trend to bearish again. Strong resistance is eyed at 219 levels.



Registered Office:#15-8-1/2/3, 2nd floor, Slddiamber Bazar, Hyderabad - 500012, Telangana State. INDIA.

Corporate Office: #3-6-196/197, Pnme Plaza, 2nd floor, flat No. 204 A & B, H1mayath Nagar, Hyderabad - 500029, Telangana State.INDIA.

Ph:+91-40-64645000,Fax: +91-40-23262166,E-mail:support@basanonline.com,Website:[www.basanonline.com](http://www.basanonline.com)



# BASAN COMMODITY LIMITED

DAILY COMMODITY REPORT 19th Jan 2018

COMMODITIES	TREND	R1	R2	R3	PIVOT POINT	S1	S2	S3	Close
ALUMINI 30MAR2018	BULLISH	144.13	144.91	146.76	143.06	142.28	141.21	139.36	143.35
ALUMINI 28FEB2018	BULLISH	144.63	145.81	149.31	142.31	141.13	138.81	135.31	143.45
ALUMINI 31JAN2018	BULLISH	144.78	146.06	149.81	142.31	141.03	138.56	134.81	143.5
ALUMINIUM 30MAR2018	BEARISH	143.8	144.75	146.45	143.05	142.1	141.35	139.65	142.85
ALUMINIUM 28FEB2018	BULLISH	144.65	145.85	149.35	142.35	141.15	138.85	135.35	143.45
ALUMINIUM 31JAN2018	BULLISH	144.81	146.13	149.93	142.33	141.01	138.53	134.73	143.5
CARDAMOM 15FEB2018	BULLISH	1149.33	1157.16	1177.16	1137.16	1129.33	1117.16	1097.16	1141.5
COPPER 29JUN2018	BULLISH	461.5	461.5	461.5	461.5	461.5	461.5	461.5	461.5
COPPER 30APR2018	BULLISH	458.23	459.51	462.16	456.86	455.58	454.21	451.56	456.95
COPPER 28FEB2018	BEARISH	454.36	456.03	459.33	452.73	451.06	449.43	446.13	452.7
COPPERM 29JUN2018	BULLISH	461.16	462.18	464.28	460.08	459.06	457.98	455.88	460.15
COPPERM 30APR2018	BULLISH	458.1	459.45	462.2	456.7	455.35	453.95	451.2	456.75
COPPERM 28FEB2018	BULLISH	454.33	455.91	459.11	452.71	451.13	449.51	446.31	452.75
COTFEBMA18 28FEB2018	BULLISH	200	200	200	200	200	200	200	200
COTJANFE18 31JAN2018	BULLISH	223.33	226.66	236.66	216.66	213.33	206.66	196.66	220
COTTON 30MAR2018	BEARISH	21383.3	21536.7	21786.7	21286.66	21133.3	21036.7	20786.7	21230
COTTON 28FEB2018	BEARISH	21210	21390	21690	21090	20910	20790	20490	21030
COTTON 31JAN2018	BEARISH	20976.7	21143.3	21413.3	20873.33	20706.7	20603.3	20333.3	20810
CPO 28MAR2018	BEARISH	565.76	568.03	572.43	563.63	561.36	559.23	554.83	563.5
CPO 28FEB2018	BULLISH	562.33	564.76	569.76	559.76	557.33	554.76	549.76	559.9
CPO 31JAN2018	BULLISH	554.86	556.13	559.23	553.03	551.76	549.93	546.83	553.6
CRUDEOIL 19JUN2018	BULLISH	4092.33	4103.66	4128.66	4078.66	4067.33	4053.66	4028.66	4081
CRUDEOIL 19APR2018	BULLISH	4109	4125	4158	4092	4076	4059	4026	4093
CRUDEOIL 19MAR2018	BULLISH	4111	4132	4178	4086	4065	4040	3994	4090
CRUDEOIL 16FEB2018	BULLISH	4114.66	4138.33	4190.33	4086.33	4062.66	4034.33	3982.33	4091
CRUDEOIL 19JAN2018	BULLISH	4112.66	4137.33	4192.33	4082.33	4057.66	4027.33	3972.33	4088
CRUDEOILM 19APR2018	BULLISH	4104.66	4127.33	4177.33	4077.33	4054.66	4027.33	3977.33	4082
CRUDEOILM 19MAR2018	BULLISH	4109.66	4132.33	4181.33	4083.33	4060.66	4034.33	3985.33	4087
CRUDEOILM 16FEB2018	BULLISH	4118.66	4146.33	4204.33	4088.33	4060.66	4030.33	3972.33	4091
CRUDEOILM 19JAN2018	BULLISH	4112.66	4137.33	4192.33	4082.33	4057.66	4027.33	3972.33	4088
GOLD 05JUN2018	BULLISH	29796.7	29851.3	29969.3	29733.33	29678.7	29615.3	29497.3	29742
GOLD 05APR2018	BULLISH	29671.7	29735.3	29874.3	29596.33	29532.7	29457.3	29318.3	29608
GOLD 27MAR2018	BULLISH	776	776	776	776	776	776	776	776
GOLD 05FEB2018	BULLISH	29713.3	29781.7	29931.7	29631.66	29563.3	29481.7	29331.7	29645
GOLD 29JAN2018	BULLISH	75	75	75	75	75	75	75	75
GOLD 29JAN2018	BULLISH	590	605	635	575	560	545	515	575
GOLD 29JAN2018	BEARISH	59.66	73.83	101.83	45.83	31.66	17.83	-10.16	45.5

Registered Office:#15-8-1/2/3, 2nd floor, Slddiamber Bazar, Hyderabad - 500012, Telangana State. INDIA.

Corporate Office: #3-6-196/197, Pnme Plaza, 2nd floor, flat No. 204 A & B, H1mayath Nagar, Hyderabad - 500029, Telangana State.INDIA.

Ph:+91-40-64645000,Fax: +91-40-23262166,E-mail:support@basanonline.com,Website:[www.basanonline.com](http://www.basanonline.com)



# BASAN COMMODITY LIMITED

DAILY COMMODITY REPORT 19th Jan 2018

COMMODITIES	TREND	R1	R2	R3	PIVOT POINT	S1	S2	S3	Close
GOLD 29JAN2018	BEARISH	469	474.5	484.5	464.5	459	454.5	444.5	463.5
GOLD 29JAN2018	BEARISH	27.66	33.83	43.83	23.83	17.66	13.83	3.83	21.5
GOLD 29JAN2018	BEARISH	203.33	206.66	211.66	201.66	198.33	196.66	191.66	200
GOLD 29JAN2018	BULLISH	20	20	20	20	20	20	20	20
GOLD 29JAN2018	BEARISH	128	154	194	114	88	74	34	102
GOLD 29JAN2018	BULLISH	11.5	11.5	11.5	11.5	11.5	11.5	11.5	11.5
GOLDGUINEA 28FEB2018	BULLISH	23807.3	23848.7	23938.7	23758.66	23717.3	23668.7	23578.7	23766
GOLDGUINEA 31JAN2018	BEARISH	24048.3	24153.7	24361.7	23945.66	23840.3	23737.7	23529.7	23943
GOLDM 05APR2018	BULLISH	29732	29848	30178	29518	29402	29188	28858	29616
GOLDM 05MAR2018	BULLISH	29625.3	29686.7	29824.7	29548.66	29487.3	29410.7	29272.7	29564
GOLDM 05FEB2018	BULLISH	29730.3	29816.7	30017.7	29615.66	29529.3	29414.7	29213.7	29644
GOLDPETAL 28FEB2018	BEARISH	2952.66	2958.33	2969.33	2947.33	2941.66	2936.33	2925.33	2947
GOLDPETAL 31JAN2018	BULLISH	2962	2970	2988	2952	2944	2934	2916	2954
LEAD 30MAR2018	BULLISH	166.93	167.96	170.76	165.16	164.13	162.36	159.56	165.9
LEAD 28FEB2018	BULLISH	168.43	169.86	173.76	165.96	164.53	162.06	158.16	167
LEAD 31JAN2018	BULLISH	168.2	169.7	173.75	165.65	164.15	161.6	157.55	166.7
LEADMINI 30MAR2018	BEARISH	166.96	167.83	169.53	166.13	165.26	164.43	162.73	166.1
LEADMINI 28FEB2018	BULLISH	168.38	169.81	173.66	165.96	164.53	162.11	158.26	166.95
LEADMINI 31JAN2018	BULLISH	168.21	169.73	173.83	165.63	164.11	161.53	157.43	166.7
MENTHAOIL 29JUN2018	BEARISH	1265.8	1295.4	1345.4	1245.4	1215.8	1195.4	1145.4	1236.2
MENTHAOIL 31MAY2018	BEARISH	1432.7	1463.8	1523.7	1403.9	1372.8	1344	1284.1	1401.6
MENTHAOIL 30APR2018	BEARISH	1639.46	1678.83	1752.03	1605.63	1566.26	1532.43	1459.23	1600.1
MENTHAOIL 28MAR2018	BEARISH	1610.83	1665.66	1750.56	1580.76	1525.93	1495.86	1410.96	1556
MENTHAOIL 28FEB2018	BEARISH	1599.2	1659.1	1750.6	1567.6	1507.7	1476.1	1384.6	1539.3
MENTHAOIL 31JAN2018	BEARISH	1580.66	1640.03	1730.43	1549.63	1490.26	1459.23	1368.83	1521.3
NATURALGAS 26MAR2018	BEARISH	181.9	184.3	188.6	180	177.6	175.7	171.4	179.5
NATURALGAS 23FEB2018	BEARISH	193.33	198.16	206.16	190.16	185.33	182.16	174.16	188.5
NATURALGAS 25JAN2018	BEARISH	206.43	213.56	225.66	201.46	194.33	189.36	177.26	199.3
NICKEL 30APR2018	BEARISH	813.46	813.73	814.23	813.23	812.96	812.73	812.23	813.2
NICKEL 30MAR2018	BULLISH	809.4	813.3	821.9	804.7	800.8	796.1	787.5	805.5
NICKEL 28FEB2018	BULLISH	807.33	814.06	827.86	800.26	793.53	786.46	772.66	800.6
NICKEL 31JAN2018	BEARISH	802.2	808.9	822	795.8	789.1	782.7	769.6	795.5
NICKELM 30MAR2018	BEARISH	808.73	813.86	823.36	804.36	799.23	794.86	785.36	803.6
NICKELM 28FEB2018	BEARISH	806.93	813.46	826.46	800.46	793.93	787.46	774.46	800.4
NICKELM 31JAN2018	BULLISH	802.3	809.1	822.8	795.4	788.6	781.7	768	795.5
SILVER 04MAY2018	BEARISH	39580	39747	40019	39475	39308	39203	38931	39413
SILVER 05MAR2018	BEARISH	39103	39289	39597	38981	38795	38673	38365	38917

Registered Office:#15-8-1/2/3, 2nd floor, Slddiamber Bazar, Hyderabad - 500012, Telangana State. INDIA.

Corporate Office: #3-6-196/197, Pnme Plaza, 2nd floor, flat No. 204 A & B, H1mayath Nagar, Hyderabad - 500029, Telangana State.INDIA.

Ph:+91-40-64645000,Fax: +91-40-23262166,E-mail:support@basanonline.com,Website:[www.basanonline.com](http://www.basanonline.com)



## BASAN COMMODITY LIMITED

DAILY COMMODITY REPORT 19th Jan 2018

COMMODITIES	TREND	R1	R2	R3	PIVOT POINT	S1	S2	S3	Close
SILVERM 29JUN2018	BEARISH	40129.3	40197.7	40330.7	40064.66	39996.3	39931.7	39798.7	40061
SILVERM 30APR2018	BEARISH	39625.3	39781.7	40030.7	39532.66	39376.3	39283.7	39034.7	39469
SILVERM 28FEB2018	BEARISH	39148.3	39357.7	39698.7	39016.66	38807.3	38675.7	38334.7	38939
SILVERMIC 31AUG2018	BEARISH	40697.7	40725.3	40779.3	40671.33	40643.7	40617.3	40563.3	40670
SILVERMIC 29JUN2018	BEARISH	40134.7	40234.3	40401.3	40067.33	39967.7	39900.3	39733.3	40035
SILVERMIC 30APR2018	BEARISH	39616	39764	39997	39531	39383	39298	39065	39468
SILVERMIC 28FEB2018	BEARISH	39127.3	39316.7	39619.7	39013.66	38824.3	38710.7	38407.7	38938
ZINC 30MAR2018	BEARISH	217.43	218.21	219.46	216.96	216.18	215.71	214.46	216.65
ZINC 28FEB2018	BEARISH	218.1	218.9	220.45	217.35	216.55	215.8	214.25	217.3
ZINC 31JAN2018	BEARISH	218.66	219.63	221.53	217.73	216.76	215.83	213.93	217.7
ZINCMINI 30MAR2018	BULLISH	217.21	217.48	218.03	216.93	216.66	216.38	215.83	216.95
ZINCMINI 28FEB2018	BEARISH	218.03	218.81	220.31	217.31	216.53	215.81	214.31	217.25
ZINCMINI 31JAN2018	BEARISH	218.61	219.53	221.33	217.73	216.81	215.93	214.13	217.7

Registered Office:#15-8-1/2/3, 2nd floor, Sllddiamber Bazar, Hyderabad - 500012, Telangana State. INDIA.

Corporate Office: #3-6-196/197, Pnme Plaza, 2nd floor, flat No. 204 A & B, H1mayath Nagar, Hyderabad - 500029, Telangana State.INDIA.

Ph:+91-40-64645000,Fax: +91-40-23262166,E-mail:support@basanonline.com,Website:[www.basanonline.com](http://www.basanonline.com)