



BASAN COMMODITY LIMITED

DAILY COMMODITY REPORT 15th Jan 2018

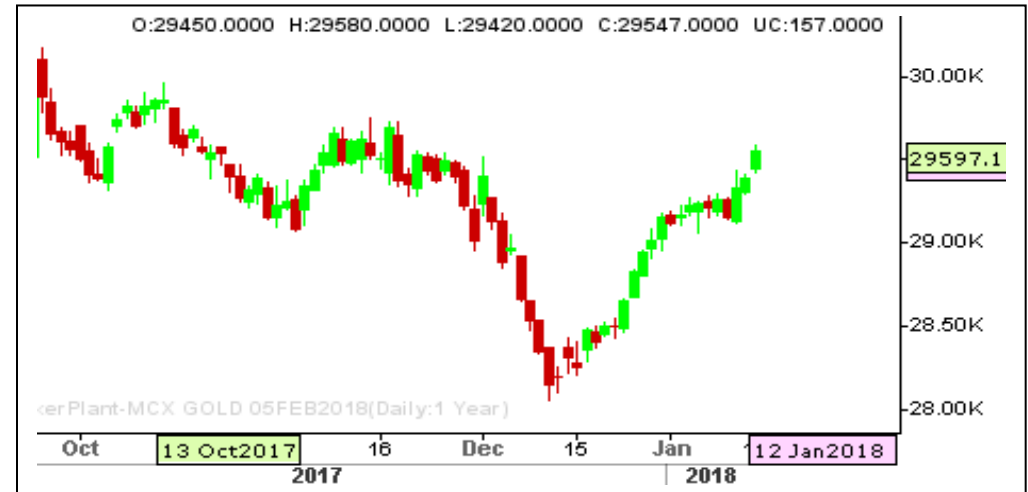
GOLD BULLISH

RANGE : 29400 - 29800

What Chart Says :

Feb Gold prices opened at 29450, regained its positive momentum towards day's high of 29580 and finally settled at 29547 levels.

Trend remains firm till price manages to trade above 29265 levels. For the day prices are likely to trade sideways to higher towards 29650 followed by 29720 levels. Any intraday dips can be limited to 29450 levels.



SILVER POSITIVE

RANGE : 38800 - 39380

What Chart Says :

Mar Silver has settled at 39063 levels, by posting a high of 39219 levels from the day's low of 38882 levels.

For the day trend remains firm. Mar prices are likely to trade sideways to higher towards 39250 followed by 39380 levels. Any decisive break and close above 39380 can push prices higher towards 40200 levels.

Buy on dips with stop below 38800 for the price targets of 39250 and 39380 levels.



Registered Office:#15-8-1/2/3, 2nd floor, Slddiamber Bazar, Hyderabad - 500012, Telangana State. INDIA.

Corporate Office: #3-6-196/197, Pnme Plaza, 2nd floor, flat No. 204 A & B, H1mayath Nagar, Hyderabad - 500029, Telangana State. INDIA.

Ph:+91-40-64645000,Fax: +91-40-23262166,E-mail:support@basanonline.com,Website:www.basanonline.com



BASAN COMMODITY LIMITED

DAILY COMMODITY REPORT 15th Jan 2018

CRUDE OIL STRONG

RANGE : 4000 - 4120

What Chart Says :

Jan Crude Oil has opened at 4083 levels and ended its day at 4065 levels by posting a low of 4007.

Till price manages to trade above 4000 levels overall trend remains firm, targeting 4120 followed by 4160 levels. Any strong break and close below 4000 can attract selling interest.

Buy on dips with stop below 3980 for the price objective of 4120 and 4160 levels.



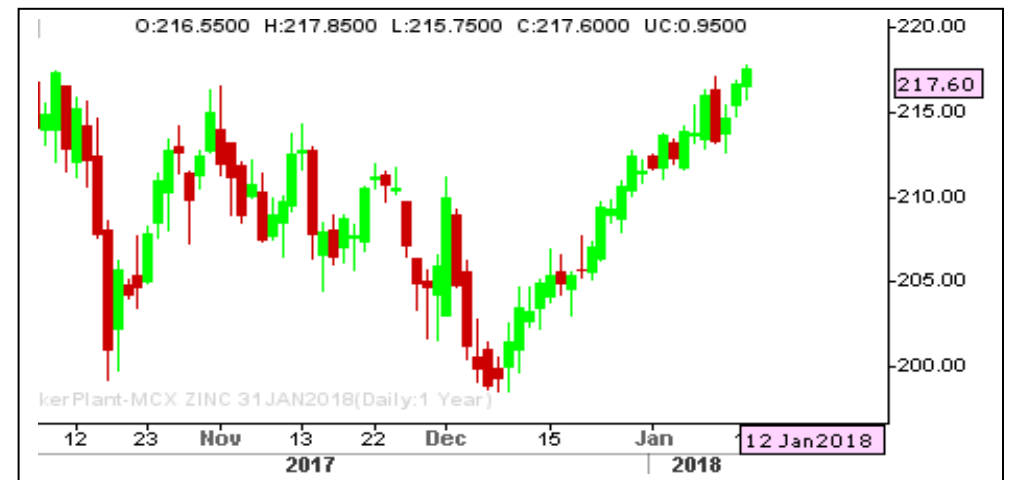
ZINC MIXED

RANGE : 215.00 - 220.00

What Chart Says :

Dec Zinc has settled at 216.90 levels, gained from day's low of 215.50 levels.

For the day prices could trade sideways to higher towards 218 followed by 220 levels. Feb prices must close below 215 levels can put some pressure on prices.



Registered Office:#15-8-1/2/3, 2nd floor, Sliddiamber Bazar, Hyderabad - 500012, Telangana State. INDIA.

Corporate Office: #3-6-196/197, Pnme Plaza, 2nd floor, flat No. 204 A & B, H1mayath Nagar, Hyderabad - 500029, Telangana State.INDIA.

Ph:+91-40-64645000,Fax: +91-40-23262166,E-mail:support@basanonline.com,Website:www.basanonline.com



BASAN COMMODITY LIMITED

DAILY COMMODITY REPORT 15th Jan 2018

COMMODITIES	TREND	R1	R2	R3	PIVOT POINT	S1	S2	S3	Close
ALUMINI 30MAR2018	BULLISH	142.56	143.33	145.23	141.43	140.66	139.53	137.63	141.8
ALUMINI 28FEB2018	BULLISH	142.11	143.13	145.78	140.48	139.46	137.83	135.18	141.1
ALUMINI 31JAN2018	BULLISH	142.05	143.15	146	140.3	139.2	137.45	134.6	140.95
ALUMINIUM 28FEB2018	BULLISH	142.1	143.15	145.8	140.5	139.45	137.85	135.2	141.05
ALUMINIUM 31JAN2018	BULLISH	142.1	143.2	146.05	140.35	139.25	137.5	134.65	141
CARDAMOM 13APR2018	BULLISH	1140	1145	1155	1135	1130	1125	1115	1135
CARDAMOM 15MAR2018	BULLISH	1125.1	1131.5	1144.4	1118.6	1112.2	1105.7	1092.8	1118.7
CARDAMOM 15FEB2018	BEARISH	1106.66	1115.33	1132.33	1098.33	1089.66	1081.33	1064.33	1098
CARDAMOM 15JAN2018	BULLISH	1094.4	1099.2	1113.2	1085.2	1080.4	1071.2	1057.2	1089.6
COPPER 29JUN2018	BEARISH	461.73	462.16	462.86	461.46	461.03	460.76	460.06	461.3
COPPER 30APR2018	BEARISH	460.03	463.06	467.81	458.31	455.28	453.56	448.81	457
COPPER 28FEB2018	BEARISH	456.56	460.08	465.58	454.58	451.06	449.08	443.58	453.05
COPPERM 29JUN2018	BEARISH	464.5	466.45	470.1	462.8	460.85	459.15	455.5	462.55
COPPERM 30APR2018	BEARISH	460.08	463.36	468.41	458.31	455.03	453.26	448.21	456.8
COPPERM 28FEB2018	BEARISH	456.46	459.88	465.18	454.58	451.16	449.28	443.98	453.05
COTFEBMA18 28FEB2018	BULLISH	203.33	206.66	216.66	196.66	193.33	186.66	176.66	200
COTJANFE18 31JAN2018	BULLISH	246.66	253.33	273.33	233.33	226.66	213.33	193.33	240
COTJANMA18 31JAN2018	BULLISH	433.33	436.66	446.66	426.66	423.33	416.66	406.66	430
COTTON 30MAR2018	BEARISH	21493.3	21826.7	22406.7	21246.66	20913.3	20666.7	20086.7	21160
COTTON 28FEB2018	BEARISH	21306.7	21653.3	22263.3	21043.33	20696.7	20433.3	19823.3	20960
COTTON 31JAN2018	BEARISH	21076.7	21433.3	22053.3	20813.33	20456.7	20193.3	19573.3	20720
CPO 28MAR2018	BEARISH	566.03	567.36	569.56	565.16	563.83	562.96	560.76	564.7
CPO 28FEB2018	BULLISH	563.93	565.76	570.06	561.46	559.63	557.16	552.86	562.1
CPO 31JAN2018	BULLISH	559.7	561.7	566.3	557.1	555.1	552.5	547.9	557.7
CRUDEOIL 21MAY2018	BEARISH	4051.66	4056.33	4065.33	4047.33	4042.66	4038.33	4029.33	4047
CRUDEOIL 19APR2018	BEARISH	4069	4089	4128	4050	4030	4011	3972	4049
CRUDEOIL 19MAR2018	BULLISH	4082.66	4104.33	4160.33	4048.33	4026.66	3992.33	3936.33	4061
CRUDEOIL 16FEB2018	BULLISH	4091.66	4118.33	4185.33	4051.33	4024.66	3984.33	3917.33	4065
CRUDEOIL 19JAN2018	BULLISH	4096.33	4127.66	4203.66	4051.66	4020.33	3975.66	3899.66	4065
CRUDEOILM 19JUN2018	BULLISH	4048	4048	4048	4048	4048	4048	4048	4048
CRUDEOILM 19APR2018	BEARISH	4055.33	4077.66	4117.66	4037.66	4015.33	3997.66	3957.66	4033
CRUDEOILM 19MAR2018	BULLISH	4082.33	4104.66	4161.66	4047.66	4025.33	3990.66	3933.66	4060
CRUDEOILM 16FEB2018	BULLISH	4090.66	4117.33	4183.33	4051.33	4024.66	3985.33	3919.33	4064
CRUDEOILM 19JAN2018	BULLISH	4098	4132	4211	4053	4019	3974	3895	4064
GOLD 05JUN2018	BULLISH	29763.7	29820.3	29969.3	29671.33	29614.7	29522.3	29373.3	29707
GOLD 05APR2018	BULLISH	29583.3	29648.7	29810.7	29486.66	29421.3	29324.7	29162.7	29518
GOLD 05FEB2018	BULLISH	29611.3	29675.7	29835.7	29515.66	29451.3	29355.7	29195.7	29547

Registered Office:#15-8-1/2/3, 2nd floor, Slddiamber Bazar, Hyderabad - 500012, Telangana State. INDIA.

Corporate Office: #3-6-196/197, Pnme Plaza, 2nd floor, flat No. 204 A & B, H1mayath Nagar, Hyderabad - 500029, Telangana State.INDIA.

Ph:+91-40-64645000,Fax: +91-40-23262166,E-mail:support@basanonline.com,Website:www.basanonline.com



BASAN COMMODITY LIMITED

DAILY COMMODITY REPORT 15th Jan 2018

COMMODITIES	TREND	R1	R2	R3	PIVOT POINT	S1	S2	S3	Close
GOLD 29JAN2018	BULLISH	96	104	120	88	80	72	56	88
GOLD 29JAN2018	BEARISH	533.33	591.16	690.16	492.16	434.33	393.16	294.16	475.5
GOLD 29JAN2018	BEARISH	50.83	57.66	71.16	44.16	37.33	30.66	17.16	44
GOLD 29JAN2018	BEARISH	44	55	74	36	25	17	-2	33
GOLD 29JAN2018	BULLISH	318	359	459	259	218	159	59	277
GOLD 29JAN2018	BEARISH	197	231.5	299.5	163.5	129	95.5	27.5	162.5
GOLD 29JAN2018	BULLISH	16	16	16	16	16	16	16	16
GOLD 29JAN2018	BEARISH	13.66	16.83	22.33	11.33	8.16	5.83	0.33	10.5
GOLD 29JAN2018	BULLISH	1046	1092	1190	994	948	896	798	1000
GOLDGUINEA 28FEB2018	BULLISH	23754	23815	23946	23684	23623	23553	23422	23693
GOLDGUINEA 31JAN2018	BULLISH	23871.7	23956.3	24174.3	23738.33	23653.7	23520.3	23302.3	23787
GOLDM 05APR2018	BULLISH	29624	29712	29918	29506	29418	29300	29094	29536
GOLDM 05MAR2018	BULLISH	29519	29577	29712	29442	29384	29307	29172	29461
GOLDM 05FEB2018	BULLISH	29620.3	29687.7	29852.7	29522.66	29455.3	29357.7	29192.7	29553
GOLDPETAL 28MAR2018	BULLISH	2955.66	2960.33	2970.33	2950.33	2945.66	2940.33	2930.33	2951
GOLDPETAL 28FEB2018	BULLISH	2951	2959	2975	2943	2935	2927	2911	2943
GOLDPETAL 31JAN2018	BULLISH	2954.66	2959.33	2970.33	2948.33	2943.66	2937.33	2926.33	2950
LEAD 28FEB2018	BEARISH	163.36	164.73	167.33	162.13	160.76	159.53	156.93	162
LEAD 31JAN2018	BEARISH	163.06	164.53	167.33	161.73	160.26	158.93	156.13	161.6
LEADMINI 30MAR2018	BEARISH	163.2	164.3	166.2	162.4	161.3	160.5	158.6	162.1
LEADMINI 28FEB2018	BEARISH	163.4	164.8	167.5	162.1	160.7	159.4	156.7	162
LEADMINI 31JAN2018	BEARISH	163.03	164.51	167.31	161.71	160.23	158.91	156.11	161.55
MENTHAOIL 29JUN2018	BEARISH	1314.66	1323.33	1340.33	1306.33	1297.66	1289.33	1272.33	1306
MENTHAOIL 31MAY2018	BULLISH	1467	1478.5	1503.5	1453.5	1442	1428.5	1403.5	1455.5
MENTHAOIL 30APR2018	BULLISH	1706.8	1719.4	1750.4	1688.4	1675.8	1657.4	1626.4	1694.2
MENTHAOIL 28MAR2018	BULLISH	1701.56	1712.63	1742.33	1682.93	1671.86	1653.23	1623.53	1690.5
MENTHAOIL 28FEB2018	BULLISH	1692	1708	1745	1671	1655	1634	1597	1676
MENTHAOIL 31JAN2018	BULLISH	1675.6	1693.8	1735.8	1651.8	1633.6	1609.8	1567.8	1657.4
NATURALGAS 26MAR2018	BULLISH	180.63	181.96	185.06	178.86	177.53	175.76	172.66	179.3
NATURALGAS 23FEB2018	BULLISH	192.46	194.43	199.43	189.43	187.46	184.43	179.43	190.5
NATURALGAS 25JAN2018	BULLISH	207.6	211.2	220.7	201.7	198.1	192.2	182.7	204
NICKEL 30APR2018	BULLISH	815.6	815.6	815.6	815.6	815.6	815.6	815.6	815.6
NICKEL 30MAR2018	BULLISH	813.13	813.46	814.16	812.76	812.43	812.06	811.36	812.8
NICKEL 28FEB2018	BULLISH	814.46	820.33	832.43	808.23	802.36	796.13	784.03	808.6
NICKEL 31JAN2018	BULLISH	810.26	816.83	830.53	803.13	796.56	789.43	775.73	803.7
NICKELM 30MAR2018	BULLISH	815.73	819.56	827.26	811.86	808.03	804.16	796.46	811.9
NICKELM 28FEB2018	BULLISH	814.3	820.2	832.3	808.1	802.2	796	783.9	808.4

Registered Office:#15-8-1/2/3, 2nd floor, Sliddiamber Bazar, Hyderabad - 500012, Telangana State. INDIA.

Corporate Office: #3-6-196/197, Pnme Plaza, 2nd floor, flat No. 204 A & B, H1mayath Nagar, Hyderabad - 500029, Telangana State.INDIA.

Ph:+91-40-64645000,Fax: +91-40-23262166,E-mail:support@basanonline.com,Website:www.basanonline.com



BASAN COMMODITY LIMITED

DAILY COMMODITY REPORT 15th Jan 2018

COMMODITIES	TREND	R1	R2	R3	PIVOT POINT	S1	S2	S3	Close
NICKELM 31JAN2018	BULLISH	809.86	816.13	829.03	803.23	796.96	790.33	777.43	803.6
SILVER 04MAY2018	BULLISH	39691	39846	40164	39528	39373	39210	38892	39536
SILVER 05MAR2018	BULLISH	39227.3	39391.7	39728.7	39054.66	38890.3	38717.7	38380.7	39063
SILVERM 29JUN2018	BULLISH	40103.3	40111.7	40131.7	40091.66	40083.3	40071.7	40051.7	40095
SILVERM 30APR2018	BULLISH	39723.7	39864.3	40154.3	39574.33	39433.7	39284.3	38994.3	39583
SILVERM 28FEB2018	BULLISH	39239	39396	39714	39078	38921	38760	38442	39082
SILVERMIC 29JUN2018	BEARISH	40167.3	40263.7	40448.7	40078.66	39982.3	39893.7	39708.7	40071
SILVERMIC 30APR2018	BULLISH	39721	39855	40131	39579	39445	39303	39027	39587
SILVERMIC 28FEB2018	BULLISH	39236.7	39394.3	39710.3	39078.33	38920.7	38762.3	38446.3	39079
ZINC 30MAR2018	BEARISH	216.35	216.55	216.9	216.2	216	215.85	215.5	216.15
ZINC 28FEB2018	BULLISH	217.8	218.7	220.75	216.65	215.75	214.6	212.55	216.9
ZINC 31JAN2018	BULLISH	218.38	219.16	221.26	217.06	216.28	214.96	212.86	217.6
ZINCMINI 30MAR2018	BEARISH	216.76	217.23	218.08	216.38	215.91	215.53	214.68	216.3
ZINCMINI 28FEB2018	BULLISH	217.66	218.53	220.48	216.58	215.71	214.63	212.68	216.8
ZINCMINI 31JAN2018	BULLISH	218.31	219.08	221.13	217.03	216.26	214.98	212.93	217.55

Registered Office:#15-8-1/2/3, 2nd floor, Slddiamber Bazar, Hyderabad - 500012, Telangana State. INDIA.

Corporate Office: #3-6-196/197, Pnme Plaza, 2nd floor, flat No. 204 A & B, H1mayath Nagar, Hyderabad - 500029, Telangana State.INDIA.

Ph:+91-40-64645000,Fax: +91-40-23262166,E-mail:support@basanonline.com,Website:www.basanonline.com