



BASAN COMMODITY LIMITED

DAILY COMMODITY REPORT 12th Jan 2018

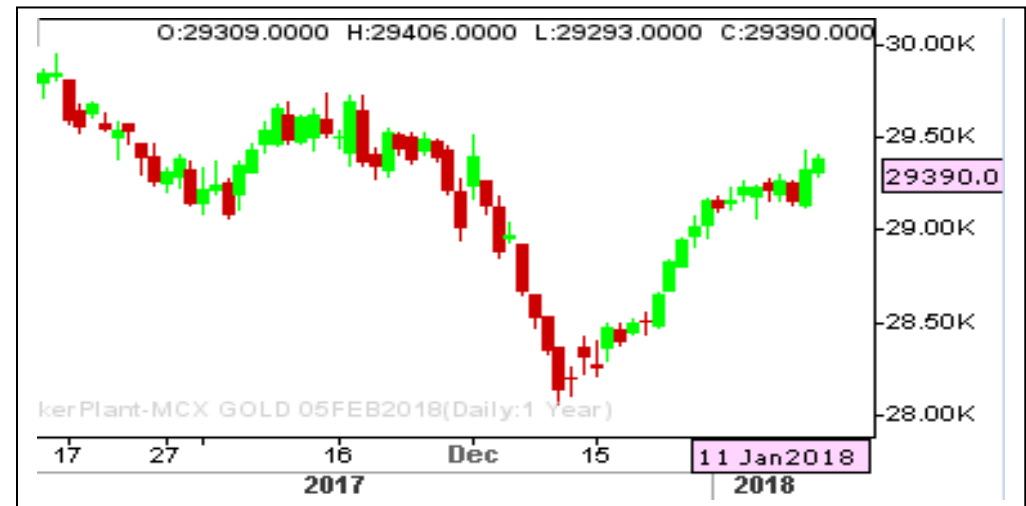
GOLD POSITIVE

RANGE : 29270 - 29500

What Chart Says :

Feb Gold prices opened at 29309, regained its positive momentum towards day's high of 29406 and finally settled at 29390 levels.

As prices settled well above key 29270 levels, our bias remains firm targeting 29500 levels in near term. Prices must breach 29500 levels to push prices higher towards 29740 levels. Any corrective declines could be limited to 29270-280 levels. But prices must sustain above 29270 to continue its bullish momentum.



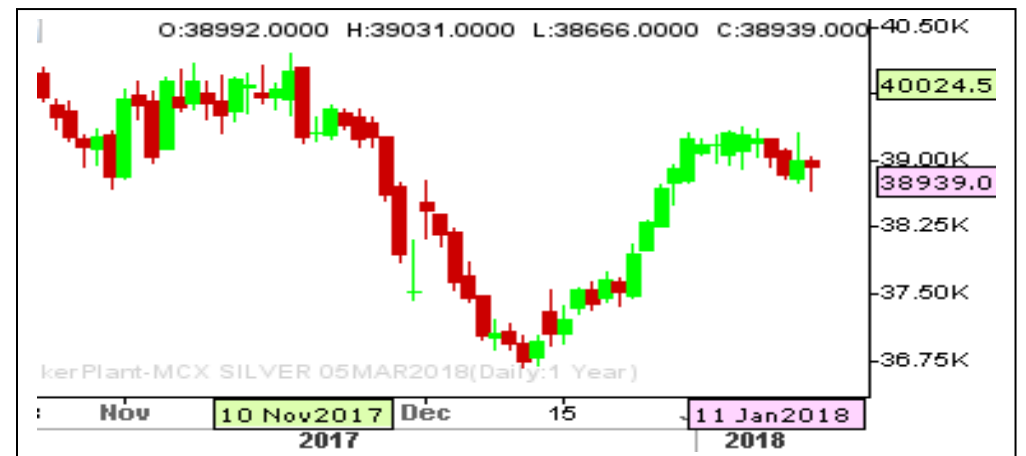
SILVER MIXED

RANGE : 39350 - 38740

What Chart Says :

Mar Silver has settled at 38939 levels, gained from the lows of 38666 levels.

For the day trend remains mixed. Prices could trade between 38800 to 39350 levels. To attract any positive momentum prices must settle above 39350 levels, failure of which can put some pressure on prices.



Registered Office:#15-8-1/2/3, 2nd floor, Slddiamber Bazar, Hyderabad - 500012, Telangana State. INDIA.

Corporate Office: #3-6-196/197, Pnme Plaza, 2nd floor, flat No. 204 A & B, H1mayath Nagar, Hyderabad - 500029, Telangana State.INDIA.

Ph:+91-40-64645000,Fax: +91-40-23262166,E-mail:support@basanonline.com,Website:www.basanonline.com



BASAN COMMODITY LIMITED

DAILY COMMODITY REPORT 12th Jan 2018

CRUDE OIL STRONG

RANGE : 4080 - 4120

What Chart Says :

Jan Crude Oil has opened at 4040 levels and ended its day at 4100 levels by posting a high of 4100.

Till price manages to trade above 4000 levels our bias remains firm with the price objective of 4120 followed by 4160 levels.



ZINC MIXED

RANGE : 212.00 - 217.80

What Chart Says :

Dec Zinc has settled at 216.65 levels, gained from day's low of 212.45 levels.

For the day prices could trade sideways between 214 to 217.80 levels. To attract any buying interest price must hold above 214 levels. Failure of which can put some pressure on prices.



Registered Office:#15-8-1/2/3, 2nd floor, Slddiamber Bazar, Hyderabad - 500012, Telangana State. INDIA.

Corporate Office: #3-6-196/197, Pnme Plaza, 2nd floor, flat No. 204 A & B, H1mayath Nagar, Hyderabad - 500029, Telangana State.INDIA.

Ph:+91-40-64645000,Fax: +91-40-23262166,E-mail:support@basanonline.com,Website:www.basanonline.com



BASAN COMMODITY LIMITED

DAILY COMMODITY REPORT 12th Jan 2018

COMMODITIES	TREND	R1	R2	R3	PIVOT POINT	S1	S2	S3	Close
ALUMINI 30MAR2018	BULLISH	141.26	142.43	144.83	140.03	138.86	137.63	135.23	140.1
ALUMINI 28FEB2018	BEARISH	140.38	141.61	143.86	139.36	138.13	137.11	134.86	139.15
ALUMINI 31JAN2018	BEARISH	140.1	141.4	143.75	139.05	137.75	136.7	134.35	138.8
ALUMINIUM 28FEB2018	BEARISH	140.35	141.6	143.85	139.35	138.1	137.1	134.85	139.1
ALUMINIUM 31JAN2018	BEARISH	140.1	141.4	143.75	139.05	137.75	136.7	134.35	138.8
CARDAMOM 15MAR2018	BULLISH	1143.33	1150.16	1165.66	1134.66	1127.83	1119.16	1103.66	1136.5
CARDAMOM 15FEB2018	BEARISH	1123.26	1139.03	1164.83	1113.23	1097.46	1087.43	1061.63	1107.5
CARDAMOM 15JAN2018	BULLISH	1108.2	1117.2	1139.3	1095.1	1086.1	1073	1050.9	1099.2
COPPER 29JUN2018	BULLISH	461.2	461.2	461.2	461.2	461.2	461.2	461.2	461.2
COPPER 30APR2018	BULLISH	463.53	466.81	473.61	460.01	456.73	453.21	446.41	460.25
COPPER 28FEB2018	BULLISH	459.66	463.18	470.28	456.08	452.56	448.98	441.88	456.15
COPPERM 29JUN2018	BEARISH	466.41	469.28	474.98	463.58	460.71	457.88	452.18	463.55
COPPERM 30APR2018	BULLISH	463.36	466.63	473.23	460.03	456.76	453.43	446.83	460.1
COPPERM 28FEB2018	BULLISH	459.65	463.15	470.2	456.1	452.6	449.05	442	456.15
COTFEBMA18 28FEB2018	BULLISH	213.33	216.66	226.66	206.66	203.33	196.66	186.66	210
COTJANFE18 31JAN2018	BULLISH	223.33	236.66	266.66	206.66	193.33	176.66	146.66	210
COTJANMA18 31JAN2018	BULLISH	426.66	433.33	453.33	413.33	406.66	393.33	373.33	420
COTTON 30MAR2018	BULLISH	21336.7	21543.3	22053.3	21033.33	20826.7	20523.3	20013.3	21130
COTTON 28FEB2018	BULLISH	21163.3	21366.7	21906.7	20826.66	20623.3	20286.7	19746.7	20960
COTTON 31JAN2018	BULLISH	20936.7	21133.3	21643.3	20623.33	20426.7	20113.3	19603.3	20740
CPO 28MAR2018	BEARISH	569.53	571.76	575.26	568.26	566.03	564.76	561.26	567.3
CPO 28FEB2018	BEARISH	565.76	568.03	571.93	564.13	561.86	560.23	556.33	563.5
CPO 31JAN2018	BEARISH	561.13	562.76	565.46	560.06	558.43	557.36	554.66	559.5
CRUDEOIL 19JUN2018	BEARISH	4085	4115	4165	4065	4035	4015	3965	4055
CRUDEOIL 21MAY2018	BULLISH	4101.33	4123.66	4170.66	4076.66	4054.33	4029.66	3982.66	4079
CRUDEOIL 19APR2018	BEARISH	4098.33	4122.66	4170.66	4074.66	4050.33	4026.66	3978.66	4074
CRUDEOIL 19MAR2018	BULLISH	4122.33	4146.66	4212.66	4080.66	4056.33	4014.66	3948.66	4098
CRUDEOIL 16FEB2018	BULLISH	4128.66	4159.33	4236.33	4082.33	4051.66	4005.33	3928.33	4098
CRUDEOIL 19JAN2018	BULLISH	4135.33	4170.66	4253.66	4087.66	4052.33	4004.66	3921.66	4100
CRUDEOILM 19APR2018	BULLISH	4150.33	4202.66	4311.66	4093.66	4041.33	3984.66	3875.66	4098
CRUDEOILM 19MAR2018	BULLISH	4116.66	4144.33	4211.33	4077.33	4049.66	4010.33	3943.33	4089
CRUDEOILM 16FEB2018	BULLISH	4128.66	4160.33	4238.33	4082.33	4050.66	4004.33	3926.33	4097
CRUDEOILM 19JAN2018	BULLISH	4136	4171	4254	4088	4053	4005	3922	4101
GOLD 05JUN2018	BEARISH	29534.7	29545.3	29565.3	29525.33	29514.7	29505.3	29485.3	29524
GOLD 05APR2018	BULLISH	29419.7	29465.3	29590.3	29340.33	29294.7	29215.3	29090.3	29374
GOLD 05FEB2018	BULLISH	29433	29476	29589	29363	29320	29250	29137	29390
GOLD 29JAN2018	BULLISH	856.83	869.66	897.16	842.16	829.33	814.66	787.16	844

Registered Office:#15-8-1/2/3, 2nd floor, Slddiamber Bazar, Hyderabad - 500012, Telangana State. INDIA.

Corporate Office: #3-6-196/197, Pnme Plaza, 2nd floor, flat No. 204 A & B, H1mayath Nagar, Hyderabad - 500029, Telangana State.INDIA.

Ph:+91-40-64645000,Fax: +91-40-23262166,E-mail:support@basanonline.com,Website:www.basanonline.com



BASAN COMMODITY LIMITED

DAILY COMMODITY REPORT 12th Jan 2018

COMMODITIES	TREND	R1	R2	R3	PIVOT POINT	S1	S2	S3	Close
GOLD 29JAN2018	BEARISH	70.33	83.66	105.66	61.66	48.33	39.66	17.66	57
GOLD 29JAN2018	BULLISH	70	70	70	70	70	70	70	70
GOLD 29JAN2018	BULLISH	403	436.5	506.5	366.5	333	296.5	226.5	369.5
GOLD 29JAN2018	BULLISH	39	42	48.5	35.5	32.5	29	22.5	36
GOLD 29JAN2018	BULLISH	325	342.5	377.5	307.5	290	272.5	237.5	307.5
GOLD 29JAN2018	BULLISH	20	20	20	20	20	20	20	20
GOLD 29JAN2018	BEARISH	199.5	202.5	208	197	194	191.5	186	196.5
GOLD 29JAN2018	BULLISH	115	123.5	141.5	105.5	97	87.5	69.5	106.5
GOLDGUINEA 28FEB2018	BULLISH	23645.7	23674.3	23739.3	23609.33	23580.7	23544.3	23479.3	23617
GOLDGUINEA 31JAN2018	BULLISH	23691.7	23721.3	23792.3	23650.33	23620.7	23579.3	23508.3	23662
GOLDM 05APR2018	BULLISH	29347	29382	29457	29307	29272	29232	29157	29312
GOLDM 05MAR2018	BULLISH	29369.7	29407.3	29511.3	29303.33	29265.7	29199.3	29095.3	29332
GOLDM 05FEB2018	BULLISH	29444.3	29484.7	29589.7	29379.66	29339.3	29274.7	29169.7	29404
GOLDPETAL 30APR2018	BEARISH	2984.33	3012.66	3063.66	2961.66	2933.33	2910.66	2859.66	2956
GOLDPETAL 28MAR2018	BULLISH	2940	2940	2940	2940	2940	2940	2940	2940
GOLDPETAL 28FEB2018	BULLISH	2941.33	2943.66	2948.66	2938.66	2936.33	2933.66	2928.66	2939
GOLDPETAL 31JAN2018	BULLISH	2943.33	2946.66	2954.66	2938.66	2935.33	2930.66	2922.66	2940
LEAD 28FEB2018	BEARISH	164.06	165.08	166.93	163.23	162.21	161.38	159.53	163.05
LEAD 31JAN2018	BEARISH	163.76	164.83	166.73	162.93	161.86	161.03	159.13	162.7
LEADMINI 30MAR2018	BULLISH	164.3	164.9	166.1	163.7	163.1	162.5	161.3	163.7
LEADMINI 28FEB2018	BEARISH	164.05	165.05	166.85	163.25	162.25	161.45	159.65	163.05
LEADMINI 31JAN2018	BEARISH	163.71	164.73	166.53	162.93	161.91	161.13	159.33	162.7
MENTHAOIL 29JUN2018	BULLISH	1334.06	1347.03	1377.03	1317.03	1304.06	1287.03	1257.03	1321.1
MENTHAOIL 30APR2018	BULLISH	1711.7	1719.3	1742	1696.6	1689	1673.9	1651.2	1704.1
MENTHAOIL 28MAR2018	BULLISH	1719.06	1735.83	1783.43	1688.23	1671.46	1640.63	1593.03	1702.3
MENTHAOIL 28FEB2018	BULLISH	1708.06	1726.53	1777.53	1675.53	1657.06	1624.53	1573.53	1689.6
MENTHAOIL 31JAN2018	BULLISH	1688.13	1706.16	1756.66	1655.66	1637.63	1605.16	1554.66	1670.1
NATURALGAS 26MAR2018	BULLISH	178.93	180.96	185.56	176.36	174.33	171.76	167.16	176.9
NATURALGAS 23FEB2018	BULLISH	188.5	191.1	197.8	184.4	181.8	177.7	171	185.9
NATURALGAS 25JAN2018	BULLISH	199.66	203.93	215.73	192.13	187.86	180.33	168.53	195.4
NICKEL 30APR2018	BULLISH	828.3	828.3	828.3	828.3	828.3	828.3	828.3	828.3
NICKEL 30MAR2018	BEARISH	829.86	838.93	856.93	820.93	811.86	802.93	784.93	820.8
NICKEL 28FEB2018	BEARISH	820.46	833.33	853.43	813.23	800.36	793.13	773.03	807.6
NICKEL 31JAN2018	BEARISH	815.96	829.13	849.93	808.33	795.16	787.53	766.73	802.8
NICKELM 30MAR2018	BEARISH	825.26	831.93	845.23	818.63	811.96	805.33	792.03	818.6
NICKELM 28FEB2018	BEARISH	820.33	832.96	852.76	813.16	800.53	793.36	773.56	807.7
NICKELM 31JAN2018	BEARISH	816.06	829.43	850.33	808.53	795.16	787.63	766.73	802.7

Registered Office:#15-8-1/2/3, 2nd floor, Slddiamber Bazar, Hyderabad - 500012, Telangana State. INDIA.

Corporate Office: #3-6-196/197, Pnme Plaza, 2nd floor, flat No. 204 A & B, H1mayath Nagar, Hyderabad - 500029, Telangana State.INDIA.

Ph:+91-40-64645000,Fax: +91-40-23262166,E-mail:support@basanonline.com,Website:www.basanonline.com



BASAN COMMODITY LIMITED

DAILY COMMODITY REPORT 12th Jan 2018

COMMODITIES	TREND	R1	R2	R3	PIVOT POINT	S1	S2	S3	Close
SILVER 04MAY2018	BULLISH	39499.3	39637.7	39918.7	39356.66	39218.3	39075.7	38794.7	39361
SILVER 05MAR2018	BULLISH	39091.3	39243.7	39608.7	38878.66	38726.3	38513.7	38148.7	38939
SILVERM 29JUN2018	BULLISH	39952	40026	40176	39876	39802	39726	39576	39878
SILVERM 30APR2018	BULLISH	39648.7	39815.3	40207.3	39423.33	39256.7	39031.3	38639.3	39482
SILVERM 28FEB2018	BULLISH	39137.7	39311.3	39728.3	38894.33	38720.7	38477.3	38060.3	38964
SILVERMIC 29JUN2018	BULLISH	40044.3	40169.7	40439.7	39899.66	39774.3	39629.7	39359.7	39919
SILVERMIC 30APR2018	BULLISH	39605.7	39747.3	40072.3	39422.33	39280.7	39097.3	38772.3	39464
SILVERMIC 28FEB2018	BULLISH	39120.7	39278.3	39650.3	38906.33	38748.7	38534.3	38162.3	38963
ZINC 30MAR2018	BULLISH	217.1	217.7	219.2	216.2	215.6	214.7	213.2	216.5
ZINC 28FEB2018	BULLISH	217.2	218.05	220.25	215.85	215	213.65	211.45	216.35
ZINC 31JAN2018	BULLISH	217.41	218.18	220.28	216.08	215.31	213.98	211.88	216.65
ZINCMINI 30MAR2018	BULLISH	216.38	216.76	217.66	215.86	215.48	214.96	214.06	216
ZINCMINI 28FEB2018	BULLISH	217.43	218.61	221.76	215.46	214.28	212.31	209.16	216.25
ZINCMINI 31JAN2018	BULLISH	217.43	218.21	220.36	216.06	215.28	213.91	211.76	216.65

Registered Office:#15-8-1/2/3, 2nd floor, Slddiamber Bazar, Hyderabad - 500012, Telangana State. INDIA.

Corporate Office: #3-6-196/197, Pnme Plaza, 2nd floor, flat No. 204 A & B, H1mayath Nagar, Hyderabad - 500029, Telangana State.INDIA.

Ph:+91-40-64645000,Fax: +91-40-23262166,E-mail:support@basanonline.com,Website:www.basanonline.com