



# BASAN COMMODITY LIMITED

DAILY COMMODITY REPORT 22nd Dec2017

## GOLD MIXED

RANGE : 28600 - 28400

### What Chart Says :

Feb Gold prices settled on flat note at 28502 levels on Thursday.

Gold trend remains weak till price manages to trade below 28550 levels. Any sustained holding above 28550 levels can push prices higher towards 28600 followed by 28750 levels. Failure of which can take back prices towards 28200 followed by 28000 levels again.



## SILVER MIXED

RANGE : 37650 - 37200

### What Chart Says :

Mar Silver has settled at 37530 levels, by posting a low of 37365 levels.

For the day trend remains weak, Prices could test 37400 levels and any breakout failure of these supports can push prices higher towards 37800 followed by 38000 levels.



Registered Office:#15-8-1/2/3, 2nd floor, Slddiambel Bazar, Hyderabad - 500012, Telangana State. INDIA.

Corporate Office: #3-6-196/197, Pnme Plaza, 2nd floor, flat No. 204 A & B, H1mayath Nagar, Hyderabad - 500029, Telangana State.INDIA.

Ph:+91-40-64645000,Fax: +91-40-23262166,E-mail:support@basanonline.com,Website:[www.basanonline.com](http://www.basanonline.com)



# BASAN COMMODITY LIMITED

DAILY COMMODITY REPORT 22nd Dec2017

## CRUDE OIL STRONG

RANGE : 3700 - 3800

### What Chart Says :

Jan Crude Oil has opened at 3722 levels and ended at 3732 levels, gained its strength by posting a low of 3693 levels.

Till price manages to trade above 3649 levels our bias remains firm with the price objective of 3760 followed by 3800 levels.

**Hold longs initiated at 3700-3680 levels with stop below 3645, Targeting 3760 followed by 3800 levels.**



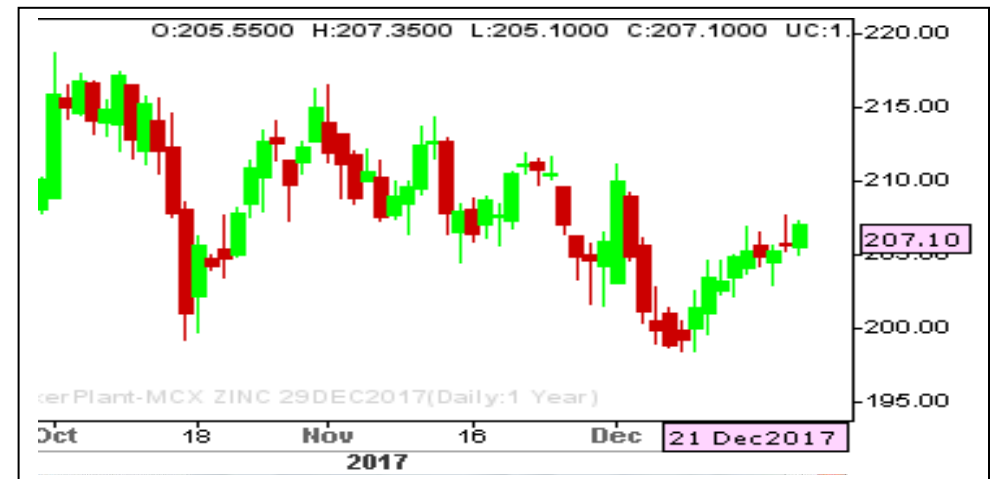
## ZINC MIXED

RANGE : 205.00 - 209.00

### What Chart Says :

Dec Zinc has settled at 207.70 levels by posting a low of 203.35 levels.

For the day prices could trade sideways between 209 - 205 levels. Prices must settle strongly over 209 levels to gain its positive momentum.



Registered Office:#15-8-1/2/3, 2nd floor, Slddiamber Bazar, Hyderabad - 500012, Telangana State. INDIA.

Corporate Office: #3-6-196/197, Pnme Plaza, 2nd floor, flat No. 204 A & B, H1mayath Nagar, Hyderabad - 500029, Telangana State.INDIA.

Ph:+91-40-64645000,Fax: +91-40-23262166,E-mail:support@basanonline.com,Website:[www.basanonline.com](http://www.basanonline.com)



# BASAN COMMODITY LIMITED

DAILY COMMODITY REPORT 22nd Dec2017

COMMODITIES	TREND	R1	R2	R3	PIVOT POINT	S1	S2	S3	Close
ALUMINI 28FEB2018	BULLISH	136.7	137	137.6	136.4	136.1	135.8	135.2	136.4
ALUMINI 31JAN2018	BULLISH	138.06	138.83	141.03	136.63	135.86	134.43	132.23	137.3
ALUMINI 29DEC2017	BULLISH	137.58	138.36	140.61	136.11	135.33	133.86	131.61	136.8
ALUMINIUM 31JAN2018	BULLISH	138.06	138.83	141.03	136.63	135.86	134.43	132.23	137.3
ALUMINIUM 29DEC2017	BULLISH	137.56	138.33	140.53	136.13	135.36	133.93	131.73	136.8
CARDAMOM 15FEB2018	BEARISH	1104.3	1118.3	1141.7	1094.9	1080.9	1071.5	1048.1	1090.3
CARDAMOM 15JAN2018	BEARISH	1079.93	1090.06	1109.16	1070.96	1060.83	1051.86	1032.76	1069.8
COPPER 29JUN2018	BEARISH	463.53	465.51	469.31	461.71	459.73	457.91	454.11	461.55
COPPER 30APR2018	BULLISH	461.73	463.56	468.66	458.46	456.63	453.36	448.26	459.9
COPPER 28FEB2018	BULLISH	458.8	460.85	466.45	455.25	453.2	449.65	444.05	456.75
COPPERM 29JUN2018	BULLISH	463.15	464.95	468.6	461.3	459.5	457.65	454	461.35
COPPERM 30APR2018	BULLISH	461.66	463.38	468.33	458.43	456.71	453.48	448.53	459.95
COPPERM 28FEB2018	BULLISH	458.6	460.45	465.75	455.15	453.3	449.85	444.55	456.75
COTDECJA18 29DEC2017	BULLISH	246.66	263.33	303.33	223.33	206.66	183.33	143.33	230
COTJANFE18 31JAN2018	BULLISH	230	250	290	210	190	170	130	210
COTTON 30MAR2018	BULLISH	20596.7	20683.3	20863.3	20503.33	20416.7	20323.3	20143.3	20510
COTTON 28FEB2018	BULLISH	20493.3	20646.7	21036.7	20256.66	20103.3	19866.7	19476.7	20340
COTTON 31JAN2018	BULLISH	20286.7	20433.3	20823.3	20043.33	19896.7	19653.3	19263.3	20140
COTTON 29DEC2017	BULLISH	20050	20190	20570	19810	19670	19430	19050	19910
CPO 28MAR2018	BEARISH	561.33	564.46	569.76	559.16	556.03	553.86	548.56	558.2
CPO 28FEB2018	BEARISH	557.8	561.1	566.8	555.4	552.1	549.7	544	554.5
CPO 31JAN2018	BEARISH	556.13	560.36	567.46	553.26	549.03	546.16	539.06	551.9
CPO 29DEC2017	BEARISH	554.26	559.73	568.43	551.03	545.56	542.33	533.63	548.8
CRUDEOIL 19APR2018	BULLISH	3772.33	3782.66	3809.66	3755.66	3745.33	3728.66	3701.66	3762
CRUDEOIL 16FEB2018	BULLISH	3761.33	3777.66	3821.66	3733.66	3717.33	3689.66	3645.66	3745
CRUDEOIL 19JAN2018	BULLISH	3750.33	3768.66	3815.66	3721.66	3703.33	3674.66	3627.66	3732
CRUDEOILM 19APR2018	BEARISH	3758.66	3772.33	3799.33	3745.33	3731.66	3718.33	3691.33	3745
CRUDEOILM 19MAR2018	BULLISH	3769.66	3783.33	3820.33	3746.33	3732.66	3709.33	3672.33	3756
CRUDEOILM 16FEB2018	BULLISH	3761	3778	3823	3733	3716	3688	3643	3744
CRUDEOILM 19JAN2018	BULLISH	3749.66	3767.33	3813.33	3721.33	3703.66	3675.33	3629.33	3732
GOLD 05APR2018	BEARISH	28554.3	28616.7	28735.7	28497.66	28435.3	28378.7	28259.7	28492
GOLD 05FEB2018	BULLISH	28556.3	28611.7	28728.7	28494.66	28439.3	28377.7	28260.7	28501
GOLD 29JAN2018	BEARISH	42	46	53.5	38.5	34.5	31	23.5	38
GOLD 29JAN2018	BULLISH	285.33	307.16	351.16	263.16	241.33	219.16	175.16	263.5
GOLD 29JAN2018	BEARISH	109	114.5	124.5	104.5	99	94.5	84.5	103.5
GOLDGUINEA 31JAN2018	BEARISH	23058.3	23096.7	23163.7	23029.66	22991.3	22962.7	22895.7	23020
GOLDGUINEA 29DEC2017	BEARISH	23064	23118	23204	23032	22978	22946	22860	23010

Registered Office:#15-8-1/2/3, 2nd floor, Slddiamber Bazar, Hyderabad - 500012, Telangana State. INDIA.

Corporate Office: #3-6-196/197, Pnme Plaza, 2nd floor, flat No. 204 A & B, H1mayath Nagar, Hyderabad - 500029, Telangana State.INDIA.

Ph:+91-40-64645000,Fax: +91-40-23262166,E-mail:support@basanonline.com,Website:[www.basanonline.com](http://www.basanonline.com)



# BASAN COMMODITY LIMITED

DAILY COMMODITY REPORT 22nd Dec2017

COMMODITIES	TREND	R1	R2	R3	PIVOT POINT	S1	S2	S3	Close
GOLDM 05MAR2018	BEARISH	28597.7	28705.3	28879.3	28531.33	28423.7	28357.3	28183.3	28490
GOLDM 05FEB2018	BULLISH	28594.7	28643.3	28747.3	28539.33	28490.7	28435.3	28331.3	28546
GOLDM 05JAN2018	BEARISH	28660	28724	28847	28601	28537	28478	28355	28596
GOLDPETAL 28MAR2018	BULLISH	2918	2918	2918	2918	2918	2918	2918	2918
GOLDPETAL 31JAN2018	BEARISH	2882.66	2886.33	2893.33	2879.33	2875.66	2872.33	2865.33	2879
GOLDPETAL 29DEC2017	BEARISH	2863.66	2870.33	2882.33	2858.33	2851.66	2846.33	2834.33	2857
LEAD 28FEB2018	BULLISH	161.6	161.6	161.6	161.6	161.6	161.6	161.6	161.6
LEAD 31JAN2018	BEARISH	161.53	163.06	166.01	160.11	158.58	157.16	154.21	160
LEAD 29DEC2017	BEARISH	161.3	163.05	166.3	159.8	158.05	156.55	153.3	159.55
LEADMINI 28FEB2018	BULLISH	160.03	160.51	161.51	159.51	159.03	158.51	157.51	159.55
LEADMINI 31JAN2018	BEARISH	161.46	162.98	165.88	160.08	158.56	157.18	154.28	159.95
LEADMINI 29DEC2017	BEARISH	161.3	163.05	166.3	159.8	158.05	156.55	153.3	159.55
MENTHAOIL 28MAR2018	BULLISH	1707.03	1733.86	1811.46	1656.26	1629.43	1578.66	1501.06	1680.2
MENTHAOIL 28FEB2018	BULLISH	1728.83	1768.86	1877.76	1659.96	1619.93	1551.06	1442.16	1688.8
MENTHAOIL 31JAN2018	BULLISH	1724.7	1764.4	1878.1	1650.7	1611	1537	1423.3	1685
MENTHAOIL 29DEC2017	BULLISH	1697	1736.5	1850.5	1622.5	1583	1508.5	1394.5	1657.5
NATURALGAS 23FEB2018	BEARISH	169.53	172.36	177.36	167.36	164.53	162.36	157.36	166.7
NATURALGAS 25JAN2018	BEARISH	170.73	173.86	179.46	168.26	165.13	162.66	157.06	167.6
NATURALGAS 26DEC2017	BEARISH	170.36	173.83	180.13	167.53	164.06	161.23	154.93	166.9
NICKEL 30MAR2018	BULLISH	781.13	781.16	781.26	781.06	781.03	780.96	780.86	781.1
NICKEL 28FEB2018	BEARISH	778.93	781.76	786.76	776.76	773.93	771.76	766.76	776.1
NICKEL 31JAN2018	BULLISH	780.5	785.8	800.5	771.1	765.8	756.4	741.7	775.2
NICKEL 29DEC2017	BULLISH	776.06	781.83	797.53	766.13	760.36	750.43	734.73	770.3
NICKELM 28FEB2018	BULLISH	780.23	786.16	798.46	773.86	767.93	761.56	749.26	774.3
NICKELM 31JAN2018	BULLISH	779.96	784.93	799.03	770.83	765.86	756.73	742.63	775
NICKELM 29DEC2017	BULLISH	775.5	780.7	795.4	766	760.8	751.3	736.6	770.3
SILVER 04MAY2018	BULLISH	38178	38318	38622	38014	37874	37710	37406	38038
SILVER 05MAR2018	BULLISH	37682.3	37834.7	38145.7	37523.66	37371.3	37212.7	36901.7	37530
SILVERM 30APR2018	BULLISH	38198.7	38332.3	38609.3	38055.33	37921.7	37778.3	37501.3	38065
SILVERM 28FEB2018	BULLISH	37713.3	37865.7	38171.7	37559.66	37407.3	37253.7	36947.7	37561
SILVERMIC 29JUN2018	BEARISH	38589.3	38654.7	38774.7	38534.66	38469.3	38414.7	38294.7	38524
SILVERMIC 30APR2018	BEARISH	38197.3	38337.7	38615.7	38059.66	37919.3	37781.7	37503.7	38057
SILVERMIC 28FEB2018	BEARISH	37730.7	37897.3	38225.3	37569.33	37402.7	37241.3	36913.3	37564
ZINC 28FEB2018	BULLISH	208.21	208.98	210.73	207.23	206.46	205.48	203.73	207.45
ZINC 31JAN2018	BULLISH	208.45	209.2	211.35	207.05	206.3	204.9	202.75	207.7
ZINC 29DEC2017	BULLISH	207.93	208.76	211.01	206.51	205.68	204.26	202.01	207.1
ZINCMINI 28FEB2018	BULLISH	208.03	208.76	210.41	207.11	206.38	205.46	203.81	207.3

Registered Office:#15-8-1/2/3, 2nd floor, Slddiamber Bazar, Hyderabad - 500012, Telangana State. INDIA.

Corporate Office: #3-6-196/197, Pnme Plaza, 2nd floor, flat No. 204 A & B, H1mayath Nagar, Hyderabad - 500029, Telangana State.INDIA.

Ph:+91-40-64645000,Fax: +91-40-23262166,E-mail:support@basanonline.com,Website:[www.basanonline.com](http://www.basanonline.com)



## BASAN COMMODITY LIMITED

DAILY COMMODITY REPORT 22nd Dec2017

COMMODITIES	TREND	R1	R2	R3	PIVOT POINT	S1	S2	S3	Close
ZINCMINI 31JAN2018	BULLISH	208.31	209.08	211.23	206.93	206.16	204.78	202.63	207.55
ZINCMINI 29DEC2017	BULLISH	207.93	208.76	211.06	206.46	205.63	204.16	201.86	207.1

Registered Office:#15-8-1/2/3, 2nd floor, Slddiamber Bazar, Hyderabad - 500012, Telangana State. INDIA.  
Corporate Office: #3-6-196/197, Pnme Plaza, 2nd floor, flat No. 204 A & B, H1mayath Nagar, Hyderabad - 500029, Telangana State.INDIA.  
Ph:+91-40-64645000,Fax: +91-40-23262166,E-mail:support@basanonline.com,Website:[www.basanonline.com](http://www.basanonline.com)