



BASAN COMMODITY LIMITED

DAILY COMMODITY REPORT 15th Dec2017

GOLD NEGATIVE

RANGE : 28500 - 28000

What Chart Says :

Feb Gold prices has opened at 28365 and witnessed mixed direction, finally settled at 28317 levels.

Gold trend remains weak till price manages to trade below 28500 levels. For the day prices could test 28450-500 levels on upper end from then prices could continue its original bearish trend towards 28200 followed by 28020 levels.



SILVER WEAK

RANGE : 37500 - 36500

What Chart Says :

Mar Silver has opened gap up at 37299 levels, witnessed negative momentum from day's high of 37548 levels to settle at 37054 levels.

For the day trend remains bearish. Prices could test 37300 levels on upper end and continue its weakness towards 36800 followed by 36500 levels.



Registered Office:#15-8-1/2/3, 2nd floor, Slddiambe

Corporate Office: #3-6-196/197, Pnme Plaza, 2nd floor, flat No. 204 A & B, H1mayath Nagar, Hyderabad - 500029, Telangana State.INDIA.

Ph:+91-40-64645000,Fax: +91-40-23262166,E-mail:support@basanonline.com,Website:www.basanonline.com



BASAN COMMODITY LIMITED

DAILY COMMODITY REPORT 15th Dec2017

CRUDE OIL MIXED

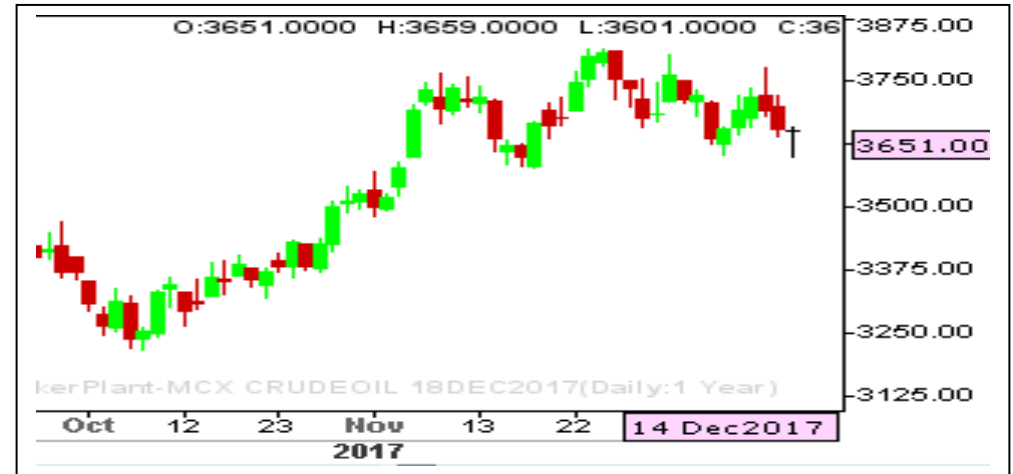
RANGE : 3600 - 3700

What Chart Says :

Dec Crude Oil has opened at 3651 levels and ended flat at 3651 levels regained from day's low of 3601 levels.

On daily charts price has formed "doji" formation which indicates indecisive for the day and today's close could give trend confirmation. Overall prices are likely to trade between 3600 - 3700 levels.

Initial target attained(3615) for sells initiated at 3650-60 levels and exit remaining wait for fresh entry.



ZINC MIXED

RANGE : 202.00 - 207.00

What Chart Says :

Dec Zinc has regained its positive momentum by posting a low of 202.25 levels, finally settled at 204.90 levels.

For the day prices could trade mixed between 203 - 207 levels. Any strong break and close below 202 can attract selling interest.



Registered Office:#15-8-1/2/3, 2nd floor, Sliddiamber Bazar, Hyderabad - 500012, Telangana State. INDIA.

Corporate Office: #3-6-196/197, Pnme Plaza, 2nd floor, flat No. 204 A & B, H1mayath Nagar, Hyderabad - 500029, Telangana State.INDIA.

Ph:+91-40-64645000,Fax: +91-40-23262166,E-mail:support@basanonline.com,Website:www.basanonline.com



BASAN COMMODITY LIMITED

DAILY COMMODITY REPORT 15th Dec2017

COMMODITIES	TREND	R1	R2	R3	PIVOT POINT	S1	S2	S3	Close
ALUMINI 31JAN2018	BULLISH	132.45	133.15	135	131.3	130.6	129.45	127.6	131.75
ALUMINI 29DEC2017	BULLISH	131.85	132.7	134.9	130.5	129.65	128.3	126.1	131
ALUMINIUM 31JAN2018	BULLISH	132.48	133.16	135.01	131.31	130.63	129.46	127.61	131.8
ALUMINIUM 29DEC2017	BULLISH	131.83	132.66	134.81	130.51	129.68	128.36	126.21	131
CARDAMOM 15MAR2018	BULLISH	1102.46	1106.23	1116.23	1096.23	1092.46	1086.23	1076.23	1098.7
CARDAMOM 15FEB2018	BULLISH	1092.2	1100.9	1120.5	1081.3	1072.6	1061.7	1042.1	1083.5
CARDAMOM 15JAN2018	BULLISH	1085.93	1098.86	1128.66	1069.06	1056.13	1039.26	1009.46	1073
COPPER 30APR2018	BULLISH	445.33	448.16	454.86	441.46	438.63	434.76	428.06	442.5
COPPER 28FEB2018	BULLISH	442.25	445.15	452.2	438.1	435.2	431.05	424	439.35
COPPERM 29JUN2018	BULLISH	446	446.15	446.45	445.85	445.7	445.55	445.25	445.85
COPPERM 30APR2018	BULLISH	445.21	447.73	453.93	441.53	439.01	435.33	429.13	442.7
COPPERM 28FEB2018	BULLISH	442.23	445.11	452.11	438.11	435.23	431.11	424.11	439.35
COTDECFE18 29DEC2017	BULLISH	453.33	456.66	466.66	446.66	443.33	436.66	426.66	450
COTDECJA18 29DEC2017	BEARISH	236.66	243.33	253.33	233.33	226.66	223.33	213.33	230
COTJANFE18 31JAN2018	BULLISH	223.33	226.66	236.66	216.66	213.33	206.66	196.66	220
COTTON 28FEB2018	BULLISH	19940	19980	20070	19890	19850	19800	19710	19900
COTTON 31JAN2018	BULLISH	19736.7	19803.3	19943.3	19663.33	19596.7	19523.3	19383.3	19670
COTTON 29DEC2017	BULLISH	19506.7	19573.3	19713.3	19433.33	19366.7	19293.3	19153.3	19440
CPO 28MAR2018	BULLISH	567.5	569.5	574.5	564.5	562.5	559.5	554.5	565.5
CPO 28FEB2018	BULLISH	565	567.5	573.5	561.5	559	555.5	549.5	562.5
CPO 31JAN2018	BULLISH	561.73	563.86	569.36	558.36	556.23	552.86	547.36	559.6
CPO 29DEC2017	BULLISH	563.96	566.93	574.83	559.03	556.06	551.13	543.23	561
CRUDEOIL 21MAY2018	BULLISH	3694	3696	3700	3692	3690	3688	3684	3692
CRUDEOIL 19APR2018	BEARISH	3713	3733	3772	3694	3674	3655	3616	3693
CRUDEOIL 19MAR2018	BULLISH	3684	3702	3742	3662	3644	3622	3582	3666
CRUDEOIL 16FEB2018	BULLISH	3695	3715	3768	3662	3642	3609	3556	3675
CRUDEOIL 19JAN2018	BULLISH	3688	3710	3769	3651	3629	3592	3533	3666
CRUDEOIL 18DEC2017	BULLISH	3673	3695	3753	3637	3615	3579	3521	3651
CRUDEOILM 21MAY2018	BULLISH	3690	3690	3690	3690	3690	3690	3690	3690
CRUDEOILM 19APR2018	BULLISH	3677.66	3689.33	3714.33	3664.33	3652.66	3639.33	3614.33	3666
CRUDEOILM 19MAR2018	BEARISH	3682.66	3695.33	3720.33	3670.33	3657.66	3645.33	3620.33	3670
CRUDEOILM 16FEB2018	BULLISH	3694.66	3712.33	3761.33	3663.33	3645.66	3614.33	3565.33	3677
CRUDEOILM 19JAN2018	BULLISH	3687.33	3708.66	3767.66	3649.66	3628.33	3590.66	3531.66	3666
CRUDEOILM 18DEC2017	BULLISH	3672.66	3694.33	3751.33	3637.33	3615.66	3580.33	3523.33	3651
GOLD 05APR2018	BEARISH	28449.3	28543.7	28727.7	28359.66	28265.3	28175.7	27991.7	28355
GOLD 05FEB2018	BEARISH	28423.7	28530.3	28738.3	28322.33	28215.7	28114.3	27906.3	28317
GOLD 29JAN2018	BULLISH	811.33	857.66	959.66	755.66	709.33	653.66	551.66	765

Registered Office:#15-8-1/2/3, 2nd floor, Slddiamber Bazar, Hyderabad - 500012, Telangana State. INDIA.

Corporate Office: #3-6-196/197, Pnme Plaza, 2nd floor, flat No. 204 A & B, H1mayath Nagar, Hyderabad - 500029, Telangana State.INDIA.

Ph:+91-40-64645000,Fax: +91-40-23262166,E-mail:support@basanonline.com,Website:www.basanonline.com



BASAN COMMODITY LIMITED

DAILY COMMODITY REPORT 15th Dec2017

COMMODITIES	TREND	R1	R2	R3	PIVOT POINT	S1	S2	S3	Close
GOLD 29JAN2018	BULLISH	70.33	74.16	82.16	66.16	62.33	58.16	50.16	66.5
GOLD 29JAN2018	BULLISH	60.66	61.83	64.33	59.33	58.16	56.83	54.33	59.5
GOLD 29JAN2018	BEARISH	54.83	65.16	81.66	48.66	38.33	32.16	15.66	44.5
GOLD 29JAN2018	BULLISH	512	592.5	753.5	431.5	351	270.5	109.5	431.5
GOLD 29JAN2018	BULLISH	29.66	31.83	36.33	27.33	25.16	22.83	18.33	27.5
GOLD 29JAN2018	BEARISH	270.5	307	377.5	236.5	200	166	95.5	234
GOLD 29JAN2018	BEARISH	119.66	139.33	173.33	105.33	85.66	71.33	37.33	100
GOLDGUINEA 31JAN2018	BULLISH	23034.3	23086.7	23200.7	22972.66	22920.3	22858.7	22744.7	22982
GOLDGUINEA 29DEC2017	BEARISH	23052	23127	23255	22999	22924	22871	22743	22977
GOLDM 05MAR2018	BEARISH	28406.7	28495.3	28665.3	28325.33	28236.7	28155.3	27985.3	28318
GOLDM 05FEB2018	BEARISH	28475	28581	28779	28383	28277	28185	27987	28369
GOLDM 05JAN2018	BEARISH	28585.7	28671.3	28839.3	28503.33	28417.7	28335.3	28167.3	28500
GOLDPETAL 28MAR2018	BEARISH	2879.66	2880.33	2881.33	2879.33	2878.66	2878.33	2877.33	2879
GOLDPETAL 28FEB2018	BEARISH	2871	2918	3003	2833	2786	2748	2663	2824
GOLDPETAL 31JAN2018	BEARISH	2874.33	2880.66	2891.66	2869.66	2863.33	2858.66	2847.66	2868
GOLDPETAL 29DEC2017	BEARISH	2872.66	2881.33	2896.33	2866.33	2857.66	2851.33	2836.33	2864
LEAD 31JAN2018	BEARISH	162.1	163.8	166.65	160.95	159.25	158.1	155.25	160.4
LEAD 29DEC2017	BEARISH	162.06	163.98	167.23	160.73	158.81	157.48	154.23	160.15
LEADMINI 31JAN2018	BEARISH	162.16	163.93	166.88	160.98	159.21	158.03	155.08	160.4
LEADMINI 29DEC2017	BEARISH	162	163.85	166.95	160.75	158.9	157.65	154.55	160.15
MENTHAOIL 28MAR2018	BULLISH	1778.4	1778.4	1778.4	1778.4	1778.4	1778.4	1778.4	1778.4
MENTHAOIL 28FEB2018	BEARISH	1737.93	1779.26	1842.76	1715.76	1674.43	1652.26	1588.76	1696.6
MENTHAOIL 31JAN2018	BEARISH	1728.4	1782.6	1866.9	1698.3	1644.1	1614	1529.7	1674.2
MENTHAOIL 29DEC2017	BEARISH	1701.2	1753.5	1835.4	1671.6	1619.3	1589.7	1507.8	1648.9
NATURALGAS 23FEB2018	BEARISH	176	178.4	182.8	174	171.6	169.6	165.2	173.6
NATURALGAS 25JAN2018	BEARISH	177	179.7	184.7	174.7	172	169.7	164.7	174.3
NATURALGAS 26DEC2017	BEARISH	174.9	177.7	182.8	172.6	169.8	167.5	162.4	172.1
NICKEL 28FEB2018	BULLISH	724	724.3	724.9	723.7	723.4	723.1	722.5	723.7
NICKEL 31JAN2018	BULLISH	728.13	732.56	743.96	721.16	716.73	709.76	698.36	723.7
NICKEL 29DEC2017	BULLISH	723.23	728.16	740.46	715.86	710.93	703.56	691.26	718.3
NICKELM 28FEB2018	BULLISH	730.36	735.33	745.43	725.23	720.26	715.13	705.03	725.4
NICKELM 31JAN2018	BULLISH	728	732.3	743.5	721.1	716.8	709.9	698.7	723.7
NICKELM 29DEC2017	BULLISH	723.33	728.36	740.76	715.96	710.93	703.56	691.16	718.3
SILVER 04MAY2018	BEARISH	37882.7	38230.3	38809.3	37651.33	37303.7	37072.3	36493.3	37535
SILVER 05MAR2018	BEARISH	37429	37804	38435	37173	36798	36542	35911	37054
SILVERM 30APR2018	BEARISH	37975.7	38339.3	38942.3	37736.33	37372.7	37133.3	36530.3	37612
SILVERM 28FEB2018	BEARISH	37459	37834	38453	37215	36840	36596	35977	37084

Registered Office:#15-8-1/2/3, 2nd floor, Slddiamber Bazar, Hyderabad - 500012, Telangana State. INDIA.

Corporate Office: #3-6-196/197, Pnme Plaza, 2nd floor, flat No. 204 A & B, H1mayath Nagar, Hyderabad - 500029, Telangana State.INDIA.

Ph:+91-40-64645000,Fax: +91-40-23262166,E-mail:support@basanonline.com,Website:www.basanonline.com



BASAN COMMODITY LIMITED

DAILY COMMODITY REPORT 15th Dec2017

COMMODITIES	TREND	R1	R2	R3	PIVOT POINT	S1	S2	S3	Close
SILVERMIC 29JUN2018	BEARISH	38455.3	38702.7	39177.7	38227.66	37980.3	37752.7	37277.7	38208
SILVERMIC 30APR2018	BEARISH	38089.3	38584.7	39379.7	37789.66	37294.3	36994.7	36199.7	37594
SILVERMIC 28FEB2018	BEARISH	37451	37823	38438	37208	36836	36593	35978	37079
ZINC 28FEB2018	BULLISH	205.73	206.36	207.96	204.76	204.13	203.16	201.56	205.1
ZINC 31JAN2018	BULLISH	206.13	207.31	210.66	203.96	202.78	200.61	197.26	204.95
ZINC 29DEC2017	BULLISH	205.91	206.93	209.78	204.08	203.06	201.23	198.38	204.9
ZINCMINI 28FEB2018	BULLISH	205.4	206.05	207.45	204.65	204	203.25	201.85	204.75
ZINCMINI 31JAN2018	BULLISH	205.95	206.9	209.6	204.2	203.25	201.5	198.8	205
ZINCMINI 29DEC2017	BULLISH	205.95	207	209.9	204.1	203.05	201.2	198.3	204.9

Registered Office:#15-8-1/2/3, 2nd floor, Slddiamber Bazar, Hyderabad - 500012, Telangana State. INDIA.

Corporate Office: #3-6-196/197, Pnme Plaza, 2nd floor, flat No. 204 A & B, H1mayath Nagar, Hyderabad - 500029, Telangana State.INDIA.

Ph:+91-40-64645000,Fax: +91-40-23262166,E-mail:support@basanonline.com,Website:www.basanonline.com