



BASAN COMMODITY LIMITED

DAILY COMMODITY REPORT 8th Dec2017

GOLD NEGATIVE

RANGE : 28800 - 28500

What Chart Says :

Feb Gold prices has opened at 28916 and witnessed selling interest, finally settled at 28667 levels.

For the day trend remains weak and Feb prices are likely to trade lower towards 28580 followed by 28500 levels. Any corrective gains could be limited to 28720-750 levels.

hold remaining sells initiated at 29125 levels with breakeven stops for 28600 levels.



SILVER WEAK

RANGE : 37200 - 38300

What Chart Says :

Mar Silver has opened at 37469 levels, witnessed negative sentiment and finally settled at 37036 levels.

For the day trend remains weak. By testing 37200-37250 levels on upper end prices could continue its negative momentum towards 36900 followed by 36700 levels. Any strong break and close above 37500 is needed to shift its trend to bullish.



Registered Office:#15-8-1/2/3, 2nd floor, Slddiamba

Corporate Office: #3-6-196/197, Pnme Plaza, 2nd floor, flat No. 204 A & B, H1mayath Nagar, Hyderabad - 500029, Telangana State.INDIA.

Ph:+91-40-64645000,Fax: +91-40-23262166,E-mail:support@basanonline.com,Website:www.basanonline.com



BASAN COMMODITY LIMITED

DAILY COMMODITY REPORT 8th Dec2017

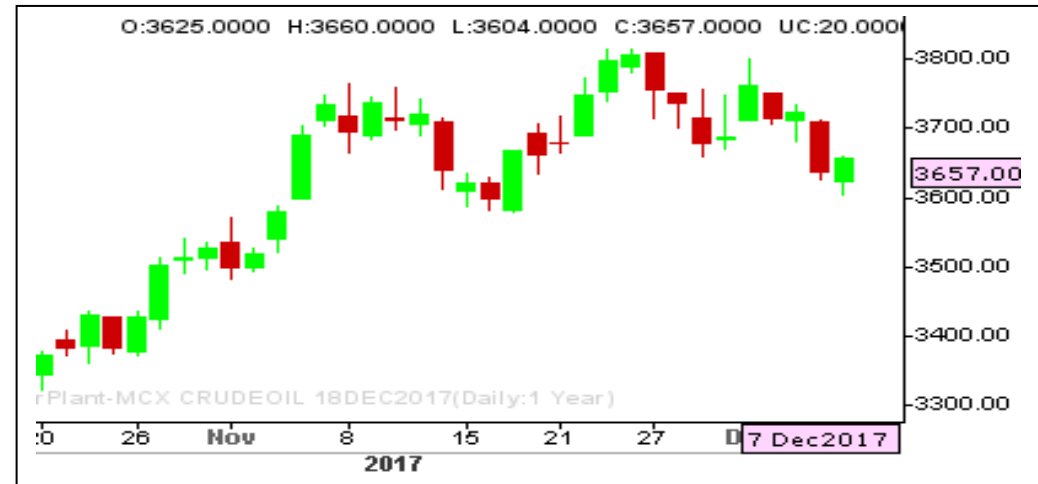
CRUDE OIL MIXED

RANGE : 3670 - 3800

What Chart Says :

Dec Crude Oil has opened at 3625 levels and ended its day at 3657 levels.

For the day trend remains mixed as price has settled well above 3650 levels. Any decisive hold above 3650 levels can attract buying interest, failure of which can put some pressure on prices. Today's close is crucial for further direction. Resistance is eyed at 3675 and 3700. Supports are at 3600 levels.



ZINC BEARISH

RANGE : 203.00 - 194.00

What Chart Says :

Dec Zinc has witnessed negative momentum from day's high of 201.45 and finally ended its day at 198.90 levels.

Trend remains weak with the price objective of 194 followed by 190 levels. Any strong break and close above 203 levels can change our bias.

Hold sells initiated at 201-202 levels with stop above 203 for the targets of 194 and 190 levels.



Registered Office:#15-8-1/2/3, 2nd floor, Sliddiamber Bazar, Hyderabad - 500012, Telangana State. INDIA.

Corporate Office: #3-6-196/197, Pnme Plaza, 2nd floor, flat No. 204 A & B, H1mayath Nagar, Hyderabad - 500029, Telangana State.INDIA.

Ph:+91-40-64645000,Fax: +91-40-23262166,E-mail:support@basanonline.com,Website:www.basanonline.com



BASAN COMMODITY LIMITED

DAILY COMMODITY REPORT 8th Dec2017

COMMODITIES	TREND	R1	R2	R3	PIVOT POINT	S1	S2	S3	Close
ALUMINI 28FEB2018	BULLISH	131.25	131.25	131.25	131.25	131.25	131.25	131.25	131.25
ALUMINI 31JAN2018	BULLISH	130.96	131.68	133.18	130.18	129.46	128.68	127.18	130.25
ALUMINI 29DEC2017	BULLISH	130.4	131.25	132.95	129.55	128.7	127.85	126.15	129.55
ALUMINIUM 30MAR2018	BULLISH	131.75	131.95	132.35	131.55	131.35	131.15	130.75	131.55
ALUMINIUM 28FEB2018	BULLISH	131.35	131.35	131.35	131.35	131.35	131.35	131.35	131.35
ALUMINIUM 31JAN2018	BEARISH	130.93	131.66	133.11	130.21	129.48	128.76	127.31	130.2
ALUMINIUM 29DEC2017	BULLISH	130.43	131.26	132.96	129.56	128.73	127.86	126.16	129.6
CARDAMOM 15FEB2018	BEARISH	1072.5	1079.2	1092.1	1066.3	1059.6	1053.4	1040.5	1065.8
CARDAMOM 15JAN2018	BEARISH	1055.06	1064.53	1079.53	1049.53	1040.06	1034.53	1019.53	1045.6
CARDAMOM 15DEC2017	BEARISH	995.8	1015.9	1051.9	979.9	959.8	943.9	907.9	975.7
COPPER 30APR2018	BEARISH	433.35	436.65	442.6	430.7	427.4	424.75	418.8	430.05
COPPER 28FEB2018	BEARISH	429.8	433.35	439.65	427.05	423.5	420.75	414.45	426.25
COPPERM 29JUN2018	BULLISH	435.6	435.6	435.6	435.6	435.6	435.6	435.6	435.6
COPPERM 30APR2018	BEARISH	433.31	436.73	442.78	430.68	427.26	424.63	418.58	429.9
COPPERM 28FEB2018	BEARISH	429.76	433.23	439.38	427.08	423.61	420.93	414.78	426.3
COTDECJA18 29DEC2017	BULLISH	233.33	236.66	246.66	226.66	223.33	216.66	206.66	230
COTTON 28FEB2018	BULLISH	19320	19360	19440	19280	19240	19200	19120	19280
COTTON 31JAN2018	BEARISH	19126.7	19203.3	19333.3	19073.33	18996.7	18943.3	18813.3	19050
COTTON 29DEC2017	BEARISH	18906.7	18983.3	19113.3	18853.33	18776.7	18723.3	18593.3	18830
CPO 28MAR2018	BEARISH	578.8	582.1	587.5	576.7	573.4	571.3	565.9	575.5
CPO 28FEB2018	BEARISH	576.76	580.43	586.43	574.43	570.76	568.43	562.43	573.1
CPO 31JAN2018	BEARISH	574.8	579.4	587	571.8	567.2	564.2	556.6	570.2
CPO 29DEC2017	BEARISH	573.2	578	585.9	570.1	565.3	562.2	554.3	568.4
CRUDEOIL 21MAY2018	BULLISH	3701	3709	3725	3693	3685	3677	3661	3693
CRUDEOIL 19MAR2018	BULLISH	3668	3670	3674	3666	3664	3662	3658	3666
CRUDEOIL 16FEB2018	BEARISH	3682.66	3707.33	3754.33	3660.33	3635.66	3613.33	3566.33	3658
CRUDEOIL 19JAN2018	BULLISH	3691	3710	3764	3656	3637	3602	3548	3672
CRUDEOIL 18DEC2017	BULLISH	3676.66	3696.33	3752.33	3640.33	3620.66	3584.33	3528.33	3657
CRUDEOILM 19APR2018	BULLISH	3709	3719	3740	3698	3688	3677	3656	3699
CRUDEOILM 19MAR2018	BULLISH	3692	3692	3692	3692	3692	3692	3692	3692
CRUDEOILM 16FEB2018	BULLISH	3700.66	3717.33	3766.33	3668.33	3651.66	3619.33	3570.33	3684
CRUDEOILM 19JAN2018	BULLISH	3691	3710	3764	3656	3637	3602	3548	3672
CRUDEOILM 18DEC2017	BULLISH	3676.33	3695.66	3750.66	3640.66	3621.33	3585.66	3530.66	3657
GOLD 05JUN2018	BULLISH	28883	28889	28901	28877	28871	28865	28853	28877
GOLD 05APR2018	BEARISH	28870.3	29011.7	29233.7	28789.66	28648.3	28567.7	28345.7	28729
GOLD 05FEB2018	BEARISH	28843	29019	29290	28748	28572	28477	28206	28667
GOLD 29JAN2018	BULLISH	93.33	99.66	112.66	86.66	80.33	73.66	60.66	87

Registered Office:#15-8-1/2/3, 2nd floor, Slldiamber Bazar, Hyderabad - 500012, Telangana State. INDIA.

Corporate Office: #3-6-196/197, Pnme Plaza, 2nd floor, flat No. 204 A & B, H1mayath Nagar, Hyderabad - 500029, Telangana State.INDIA.

Ph:+91-40-64645000,Fax: +91-40-23262166,E-mail:support@basanonline.com,Website:www.basanonline.com



BASAN COMMODITY LIMITED

DAILY COMMODITY REPORT 8th Dec2017

COMMODITIES	TREND	R1	R2	R3	PIVOT POINT	S1	S2	S3	Close
GOLD 29JAN2018	BULLISH	83.66	89.33	104.33	74.33	68.66	59.33	44.33	78
GOLD 29JAN2018	BULLISH	72	77	89	65	60	53	41	67
GOLD 29JAN2018	BULLISH	47	47	47	47	47	47	47	47
GOLD 29JAN2018	BEARISH	246.33	282.66	342.16	223.16	186.83	163.66	104.16	210
GOLD 29JAN2018	BEARISH	197.66	222.83	272.83	172.83	147.66	122.83	72.83	172.5
GOLD 29JAN2018	BULLISH	111	115	124	106	102	97	88	107
GOLDGUINEA 31JAN2018	BEARISH	23278.7	23371.3	23520.3	23222.33	23129.7	23073.3	22924.3	23186
GOLDGUINEA 29DEC2017	BEARISH	23295	23434	23657	23211	23072	22988	22765	23156
GOLDM 05MAR2018	BEARISH	28897	29040	29264	28816	28673	28592	28368	28754
GOLDM 05FEB2018	BEARISH	28872.3	29048.7	29320.7	28776.66	28600.3	28504.7	28232.7	28696
GOLDM 05JAN2018	BEARISH	28850.3	29030.7	29309.7	28751.66	28571.3	28472.7	28193.7	28670
GOLDPETAL 31JAN2018	BEARISH	2911	2927	2952	2902	2886	2877	2852	2895
GOLDPETAL 29DEC2017	BEARISH	2902.66	2917.33	2940.33	2894.33	2879.66	2871.33	2848.33	2888
LEAD 31JAN2018	BEARISH	161.43	165.06	170.56	159.56	155.93	154.06	148.56	157.8
LEAD 29DEC2017	BEARISH	161.4	165.3	171.25	159.35	155.45	153.4	147.45	157.5
LEADMINI 31JAN2018	BEARISH	161.46	165.08	170.58	159.58	155.96	154.08	148.58	157.85
LEADMINI 29DEC2017	BEARISH	161.43	165.36	171.36	159.36	155.43	153.36	147.36	157.5
MENTHAOIL 28MAR2018	BULLISH	1909.4	1937.6	1997.5	1877.7	1849.5	1817.8	1757.9	1881.2
MENTHAOIL 28FEB2018	BULLISH	1908.1	1936.5	1998	1875	1846.6	1813.5	1752	1879.7
MENTHAOIL 31JAN2018	BULLISH	1918.03	1945.46	2020.66	1870.26	1842.83	1795.06	1719.86	1890.6
MENTHAOIL 29DEC2017	BULLISH	1890.96	1921.83	2002.53	1841.13	1810.26	1760.43	1679.73	1860.1
NATURALGAS 23FEB2018	BEARISH	186.9	192.4	201	183.8	178.3	175.2	166.6	181.4
NATURALGAS 25JAN2018	BEARISH	188	194	203.5	184.5	178.5	175	165.5	182
NATURALGAS 26DEC2017	BEARISH	186.76	193.53	204.33	182.73	175.96	171.93	161.13	180
NICKEL 28FEB2018	BEARISH	718.93	723.86	732.96	714.76	709.83	705.66	696.56	714
NICKEL 31JAN2018	BULLISH	722.23	729.06	747.86	710.26	703.43	691.46	672.66	715.4
NICKEL 29DEC2017	BULLISH	717.53	724.96	744.76	705.16	697.73	685.36	665.56	710.1
NICKELM 28FEB2018	BULLISH	719.36	725.63	739.03	712.23	705.96	698.83	685.43	713.1
NICKELM 31JAN2018	BULLISH	723.93	731.66	752.06	711.26	703.53	690.86	670.46	716.2
NICKELM 29DEC2017	BULLISH	717.46	724.73	744.23	705.23	697.96	685.73	666.23	710.2
PEPPER 20DEC2017	BULLISH	40100	40100	40100	40100	40100	40100	40100	40100
SILVER 04MAY2018	BEARISH	37837.3	38128.7	38575.7	37681.66	37390.3	37234.7	36787.7	37546
SILVER 05MAR2018	BEARISH	37342.7	37649.3	38131.3	37167.33	36860.7	36685.3	36203.3	37036
SILVERM 29JUN2018	BULLISH	38602	38602	38602	38602	38602	38602	38602	38602
SILVERM 30APR2018	BEARISH	37923.3	38231.7	38711.7	37751.66	37443.3	37271.7	36791.7	37615
SILVERM 28FEB2018	BEARISH	37373.3	37686.7	38173.7	37199.66	36886.3	36712.7	36225.7	37060
SILVERMIC 29JUN2018	BULLISH	38630.7	38844.3	39278.3	38410.33	38196.7	37976.3	37542.3	38417

Registered Office:#15-8-1/2/3, 2nd floor, Slddiamber Bazar, Hyderabad - 500012, Telangana State. INDIA.

Corporate Office: #3-6-196/197, Pnme Plaza, 2nd floor, flat No. 204 A & B, H1mayath Nagar, Hyderabad - 500029, Telangana State.INDIA.

Ph:+91-40-64645000,Fax: +91-40-23262166,E-mail:support@basanonline.com,Website:www.basanonline.com



BASAN COMMODITY LIMITED

DAILY COMMODITY REPORT 8th Dec2017

COMMODITIES	TREND	R1	R2	R3	PIVOT POINT	S1	S2	S3	Close
SILVERMIC 30APR2018	BEARISH	37935	38247	38731	37763	37451	37279	36795	37623
SILVERMIC 28FEB2018	BEARISH	37379	37696	38189	37203	36886	36710	36217	37062
ZINC 28FEB2018	BEARISH	200.6	201.1	201.9	200.3	199.8	199.5	198.7	200.1
ZINC 31JAN2018	BEARISH	200.7	202.35	204.9	199.8	198.15	197.25	194.7	199.05
ZINC 29DEC2017	BEARISH	200.66	202.43	205.18	199.68	197.91	196.93	194.18	198.9
ZINCMINI 28FEB2018	BULLISH	200.03	200.26	200.76	199.76	199.53	199.26	198.76	199.8
ZINCMINI 31JAN2018	BEARISH	200.71	202.38	204.98	199.78	198.11	197.18	194.58	199.05
ZINCMINI 29DEC2017	BEARISH	200.6	202.35	205.05	199.65	197.9	196.95	194.25	198.85

Registered Office:#15-8-1/2/3, 2nd floor, Slddiamber Bazar, Hyderabad - 500012, Telangana State. INDIA.

Corporate Office: #3-6-196/197, Pnme Plaza, 2nd floor, flat No. 204 A & B, H1mayath Nagar, Hyderabad - 500029, Telangana State.INDIA.

Ph:+91-40-64645000,Fax: +91-40-23262166,E-mail:support@basanonline.com,Website:www.basanonline.com