



BASAN COMMODITY LIMITED

DAILY COMMODITY REPORT 7th Dec2017

GOLD POSITIVE

RANGE : 29050 - 28500

What Chart Says :

Feb Gold prices has opened up at 28960 and witnessed selling interest, finally settled flat at 28967 levels.

For the day trend remains weak and Feb prices are likely to trade lower towards 28750 followed by 28600 levels by testing 29000-50 levels on upper end.

hold remaining sells initiated at 29125 levels with breakeven stops for 28600 levels.



SILVER NEGATIVE

RANGE : 37900 - 37000

What Chart Says :

Mar Silver has opened at 37701 levels, witnessed negative sentiment and finally settled at 37444 levels.

For the day trend remains weak. By testing 37600-37650 levels on upper end prices could continue its negative momentum towards 37200 followed by 37000 levels. Any strong break and close above 37900 is needed to shift its trend to bullish.



Registered Office:#15-8-1/2/3, 2nd floor, Sliddiamba

Corporate Office: #3-6-196/197, Pnme Plaza, 2nd floor, flat No. 204 A & B, H1mayath Nagar, Hyderabad - 500029, Telangana State.INDIA.

Ph:+91-40-64645000,Fax: +91-40-23262166,E-mail:support@basanonline.com,Website:www.basanonline.com



BASAN COMMODITY LIMITED

DAILY COMMODITY REPORT 7th Dec2017

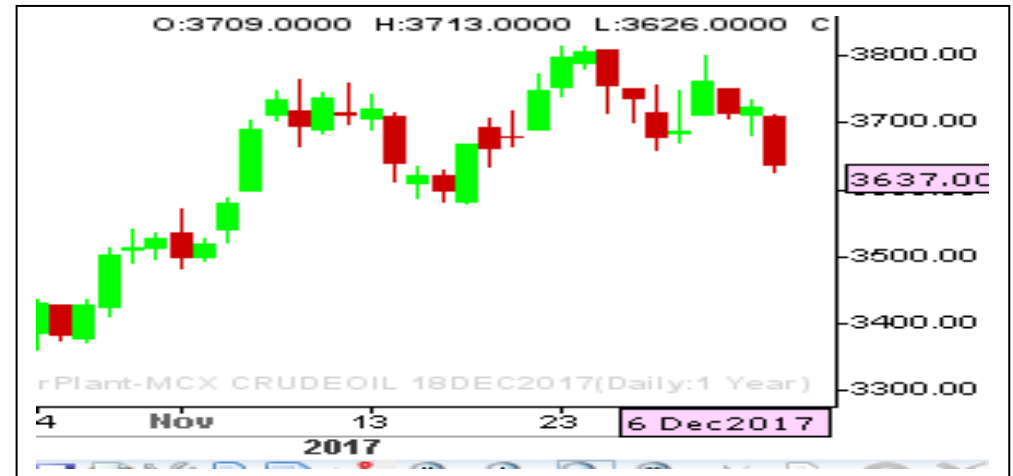
CRUDE OIL WEAK

RANGE : 3650 - 3600

What Chart Says :

Dec Crude Oil has opened at 3709 levels and ended its day at 3637 levels.

As overall trend shifted to weak, Dec prices are likely to continue its weak momentum towards 3600 followed by 3570 levels in near future but before that prices could retest 3650 levels on upper end.



ZINC WEAK

RANGE : 203.00 - 194.00

What Chart Says :

Dec Zinc has witnessed negative momentum from day's high of 202.80 and finally ended its day at 199.85 levels.

Trend remains weak with the price objective of 194 followed by 190 levels. Any strong break and close above 203 levels can change our bias.

Sell on rallies with stop above 203 for the targets of 194 levels.



Registered Office:#15-8-1/2/3, 2nd floor, Slddiamber Bazar, Hyderabad - 500012, Telangana State. INDIA.

Corporate Office: #3-6-196/197, Pnme Plaza, 2nd floor, flat No. 204 A & B, H1mayath Nagar, Hyderabad - 500029, Telangana State.INDIA.

Ph:+91-40-64645000,Fax: +91-40-23262166,E-mail:support@basanonline.com,Website:www.basanonline.com



BASAN COMMODITY LIMITED

DAILY COMMODITY REPORT 7th Dec2017

COMMODITIES	TREND	R1	R2	R3	PIVOT POINT	S1	S2	S3	Close
ALUMINI 31JAN2018	BEARISH	132.01	133.18	135.03	131.33	130.16	129.48	127.63	130.85
ALUMINI 29DEC2017	BEARISH	131.38	132.56	134.46	130.66	129.48	128.76	126.86	130.2
ALUMINIUM 31JAN2018	BEARISH	132	133.15	135	131.3	130.15	129.45	127.6	130.85
ALUMINIUM 29DEC2017	BEARISH	131.38	132.56	134.46	130.66	129.48	128.76	126.86	130.2
CARDAMOM 15FEB2018	BULLISH	1084.83	1095.36	1122.26	1068.46	1057.93	1041.56	1014.66	1074.3
CARDAMOM 15JAN2018	BULLISH	1070.33	1080.16	1105.16	1055.16	1045.33	1030.16	1005.16	1060.5
CARDAMOM 15DEC2017	BEARISH	1016.33	1050.56	1117.86	983.26	949.03	915.96	848.66	982.1
COPPER 30APR2018	BEARISH	432.73	434.96	439.16	430.76	428.53	426.56	422.36	430.5
COPPER 28FEB2018	BEARISH	429.18	431.86	436.81	426.91	424.23	421.96	417.01	426.5
COPPERM 29JUN2018	BULLISH	434.5	434.5	434.5	434.5	434.5	434.5	434.5	434.5
COPPERM 30APR2018	BEARISH	432.86	435.58	440.98	430.18	427.46	424.78	419.38	430.15
COPPERM 28FEB2018	BEARISH	429.1	431.7	436.5	426.9	424.3	422.1	417.3	426.5
COTDECJA18 29DEC2017	BULLISH	223.33	226.66	236.66	216.66	213.33	206.66	196.66	220
COTTON 28FEB2018	BULLISH	19300	19320	19360	19280	19260	19240	19200	19280
COTTON 31JAN2018	BULLISH	19180	19260	19420	19100	19020	18940	18780	19100
COTTON 29DEC2017	BULLISH	18970	19040	19210	18870	18800	18700	18530	18900
CPO 28MAR2018	BEARISH	582.06	583.33	585.43	581.23	579.96	579.13	577.03	580.8
CPO 28FEB2018	BEARISH	582.76	585.33	590.43	580.23	577.66	575.13	570.03	580.2
CPO 31JAN2018	BEARISH	579.4	582	587	577	574.4	572	567	576.8
CPO 29DEC2017	BEARISH	578.13	581.96	588.26	575.66	571.83	569.36	563.06	574.3
CRUDEOIL 21MAY2018	BEARISH	3747.66	3776.33	3832.33	3720.33	3691.66	3664.33	3608.33	3719
CRUDEOIL 19APR2018	BEARISH	3736	3766	3820	3712	3682	3658	3604	3706
CRUDEOIL 16FEB2018	BEARISH	3712.33	3754.66	3820.66	3688.66	3646.33	3622.66	3556.66	3670
CRUDEOIL 19JAN2018	BEARISH	3706.33	3758.66	3841.66	3675.66	3623.33	3592.66	3509.66	3654
CRUDEOIL 18DEC2017	BEARISH	3691.33	3745.66	3832.66	3658.66	3604.33	3571.66	3484.66	3637
CRUDEOILM 21MAY2018	BULLISH	3700	3700	3700	3700	3700	3700	3700	3700
CRUDEOILM 19APR2018	BULLISH	3720	3738	3777	3699	3681	3660	3621	3702
CRUDEOILM 16FEB2018	BEARISH	3716.66	3766.33	3844.33	3688.33	3638.66	3610.33	3532.33	3667
CRUDEOILM 19JAN2018	BEARISH	3707.33	3759.66	3842.66	3676.66	3624.33	3593.66	3510.66	3655
CRUDEOILM 18DEC2017	BEARISH	3695.66	3754.33	3847.33	3661.33	3602.66	3568.33	3475.33	3637
GOLD 05JUN2018	BULLISH	29100	29100	29100	29100	29100	29100	29100	29100
GOLD 05APR2018	BEARISH	29056.7	29098.3	29178.3	29018.33	28976.7	28938.3	28858.3	29015
GOLD 05FEB2018	BEARISH	29031.7	29096.3	29211.3	28981.33	28916.7	28866.3	28751.3	28967
GOLD 29JAN2018	BULLISH	99.33	110.16	133.16	87.16	76.33	64.16	41.16	88.5
GOLD 29JAN2018	BULLISH	80.66	88.83	105.83	71.83	63.66	54.83	37.83	72.5
GOLD 29JAN2018	BULLISH	50	50	50	50	50	50	50	50
GOLD 29JAN2018	BEARISH	319.5	337	371.5	302.5	285	268	233.5	302

Registered Office:#15-8-1/2/3, 2nd floor, Slddiamber Bazar, Hyderabad - 500012, Telangana State. INDIA.

Corporate Office: #3-6-196/197, Pnme Plaza, 2nd floor, flat No. 204 A & B, H1mayath Nagar, Hyderabad - 500029, Telangana State.INDIA.

Ph:+91-40-64645000,Fax: +91-40-23262166,E-mail:support@basanonline.com,Website:www.basanonline.com



BASAN COMMODITY LIMITED

DAILY COMMODITY REPORT 7th Dec2017

COMMODITIES	TREND	R1	R2	R3	PIVOT POINT	S1	S2	S3	Close
GOLD 29JAN2018	BULLISH	300	314	343	285	271	256	227	286
GOLD 29JAN2018	BULLISH	259	259	259	259	259	259	259	259
GOLD 29JAN2018	BULLISH	210	236	288	184	158	132	80	184
GOLD 29JAN2018	BULLISH	142	150.5	170	131	122.5	111.5	92	133.5
GOLD 29JAN2018	BEARISH	116.66	124.33	139.33	109.33	101.66	94.33	79.33	109
GOLD 29JAN2018	BEARISH	115	125.5	143.5	107.5	97	89.5	71.5	104.5
GOLDGUINEA 31JAN2018	BEARISH	23419.3	23502.7	23642.7	23362.66	23279.3	23222.7	23082.7	23336
GOLDGUINEA 29DEC2017	BEARISH	23403.7	23474.3	23584.3	23364.33	23293.7	23254.3	23144.3	23333
GOLDM 05FEB2018	BULLISH	29058	29118	29238	28998	28938	28878	28758	28998
GOLDM 05JAN2018	BEARISH	29033.3	29094.7	29211.7	28977.66	28916.3	28860.7	28743.7	28972
GOLDPETAL 28FEB2018	BULLISH	2939.66	2972.33	3058.33	2886.33	2853.66	2800.33	2714.33	2907
GOLDPETAL 31JAN2018	BEARISH	2915.33	2920.66	2929.66	2911.66	2906.33	2902.66	2893.66	2910
GOLDPETAL 29DEC2017	BEARISH	2913.33	2919.66	2930.66	2908.66	2902.33	2897.66	2886.66	2907
LEAD 31JAN2018	BULLISH	163.76	164.93	168.18	161.68	160.51	158.43	155.18	162.6
LEAD 29DEC2017	BULLISH	163.78	165.01	168.46	161.56	160.33	158.11	154.66	162.55
LEADMINI 31JAN2018	BULLISH	163.8	165.05	168.4	161.7	160.45	158.35	155	162.55
LEADMINI 29DEC2017	BULLISH	163.68	164.86	168.16	161.56	160.38	158.26	154.96	162.5
MENTHAOIL 28MAR2018	BEARISH	1931.46	1960.73	2008.23	1913.23	1883.96	1865.73	1818.23	1902.2
MENTHAOIL 28FEB2018	BEARISH	1937.46	1965.83	2017.33	1914.33	1885.96	1862.83	1811.33	1909.1
MENTHAOIL 31JAN2018	BEARISH	1921.33	1960.16	2022.16	1898.16	1859.33	1836.16	1774.16	1882.5
MENTHAOIL 29DEC2017	BEARISH	1896.7	1938.9	2006.4	1871.4	1829.2	1803.9	1736.4	1854.5
NATURALGAS 23FEB2018	BEARISH	191.46	193.73	197.73	189.73	187.46	185.73	181.73	189.2
NATURALGAS 25JAN2018	BEARISH	192.7	195.1	199.5	190.7	188.3	186.3	181.9	190.3
NATURALGAS 26DEC2017	BEARISH	191.3	193.8	198.4	189.2	186.7	184.6	180	188.8
NICKEL 28FEB2018	BEARISH	710.66	711.43	712.63	710.23	709.46	709.03	707.83	709.9
NICKEL 31JAN2018	BEARISH	709.76	715.13	725.13	705.13	699.76	695.13	685.13	704.4
NICKEL 29DEC2017	BEARISH	704.76	710.53	721.13	699.93	694.16	689.33	678.73	699
NICKELM 28FEB2018	BEARISH	714.13	718.36	726.36	710.36	706.13	702.36	694.36	709.9
NICKELM 31JAN2018	BEARISH	710.16	715.63	725.93	705.33	699.86	695.03	684.73	704.7
NICKELM 29DEC2017	BEARISH	705.5	712	724.7	699.3	692.8	686.6	673.9	699
SILVER 04MAY2018	BEARISH	38222.7	38472.3	38858.3	38086.33	37836.7	37700.3	37314.3	37973
SILVER 05MAR2018	BEARISH	37724.3	38004.7	38439.7	37569.66	37289.3	37134.7	36699.7	37444
SILVERM 30NOV2018	BEARISH	39961.7	39981.3	40015.3	39947.33	39927.7	39913.3	39879.3	39942
SILVERM 29JUN2018	BULLISH	38883.3	38976.7	39186.7	38766.66	38673.3	38556.7	38346.7	38790
SILVERM 30APR2018	BEARISH	38303	38558	38956	38160	37905	37762	37364	38048
SILVERM 28FEB2018	BEARISH	37756	38033	38463	37603	37326	37173	36743	37479
SILVERMIC 29JUN2018	BULLISH	38802.7	38901.3	39101.3	38701.33	38602.7	38501.3	38301.3	38704

Registered Office:#15-8-1/2/3, 2nd floor, Slddiamber Bazar, Hyderabad - 500012, Telangana State. INDIA.

Corporate Office: #3-6-196/197, Pnme Plaza, 2nd floor, flat No. 204 A & B, H1mayath Nagar, Hyderabad - 500029, Telangana State.INDIA.

Ph:+91-40-64645000,Fax: +91-40-23262166,E-mail:support@basanonline.com,Website:www.basanonline.com



BASAN COMMODITY LIMITED

DAILY COMMODITY REPORT 7th Dec2017

COMMODITIES	TREND	R1	R2	R3	PIVOT POINT	S1	S2	S3	Close
SILVERMIC 30APR2018	BEARISH	38316.3	38582.7	39001.7	38163.66	37897.3	37744.7	37325.7	38050
SILVERMIC 28FEB2018	BEARISH	37770.7	38059.3	38508.3	37610.33	37321.7	37161.3	36712.3	37482
ZINC 28FEB2018	BEARISH	201.7	202.7	204.55	200.85	199.85	199	197.15	200.7
ZINC 31JAN2018	BEARISH	202.03	204.01	207.41	200.61	198.63	197.21	193.81	200.05
ZINC 29DEC2017	BEARISH	202.08	204.31	208.06	200.56	198.33	196.81	193.06	199.85
ZINCMINI 28FEB2018	BEARISH	202.01	203.73	206.68	200.78	199.06	197.83	194.88	200.3
ZINCMINI 31JAN2018	BEARISH	202.05	204.05	207.5	200.6	198.6	197.15	193.7	200.05
ZINCMINI 29DEC2017	BEARISH	202.01	204.18	207.83	200.53	198.36	196.88	193.23	199.85

Registered Office:#15-8-1/2/3, 2nd floor, Slddiamber Bazar, Hyderabad - 500012, Telangana State. INDIA.

Corporate Office: #3-6-196/197, Pnme Plaza, 2nd floor, flat No. 204 A & B, H1mayath Nagar, Hyderabad - 500029, Telangana State.INDIA.

Ph:+91-40-64645000,Fax: +91-40-23262166,E-mail:support@basanonline.com,Website:www.basanonline.com