



BASAN COMMODITY LIMITED

DAILY COMMODITY REPORT 4th Dec2017

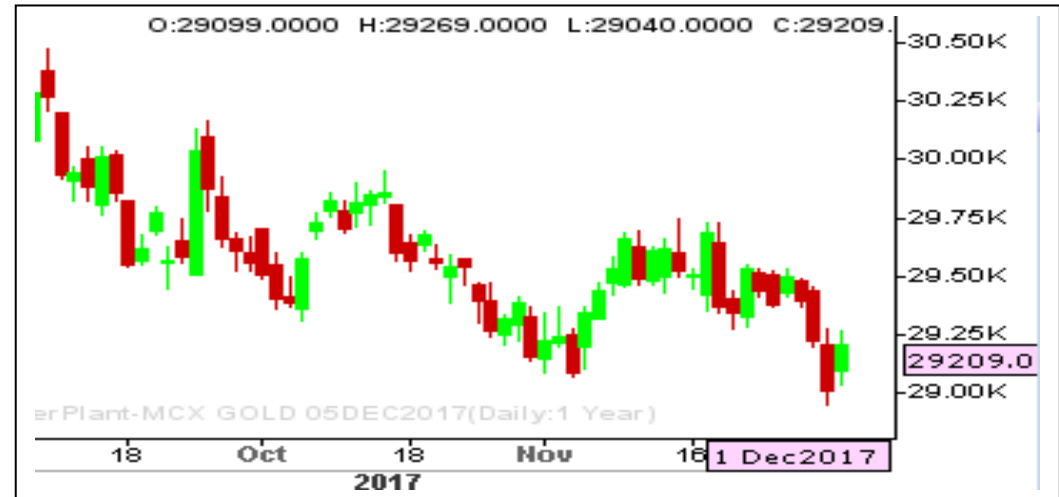
GOLD POSITIVE

RANGE : 29000 - 29500

What Chart Says :

Feb Gold prices has opened at 29333 and witnessed selling interest in the initial session but in the second half prices bounced and made a high of 29510 levels and finally settled at 29395 levels.

For the day trend remains mixed and Feb is expected to trade between 29300 - 29450 levels. Any strong break and close above 29500 levels can only attract buying interest.



SILVER POSITIVE

RANGE : 37200 - 38300

What Chart Says :

Mar Silver has opened at 38525 levels, witnessed mixed movements on Friday and finally settled at 38446 levels.

For the day trend remains weak. By testing 38800 levels on upper end prices could continue its negative momentum towards 38000 followed by 37700 levels. Any strong break and close above 38800 is needed to shift its trend to bullish.



Registered Office:#15-8-1/2/3, 2nd floor, Sliddiamber Bazar, Hyderabad - 500012, Telangana State. INDIA.

Corporate Office: #3-6-196/197, Pnme Plaza, 2nd floor, flat No. 204 A & B, H1mayath Nagar, Hyderabad - 500029, Telangana State.INDIA.

Ph:+91-40-64645000,Fax: +91-40-23262166,E-mail:support@basanonline.com,Website:www.basanonline.com



BASAN COMMODITY LIMITED

DAILY COMMODITY REPORT 4th Dec2017

CRUDE OIL STRONG

RANGE : 3670 - 3800

What Chart Says :

Dec Crude Oil has opened at 3684 levels, witnessed mixed sentiment and ended its day at 3687 by posting a high of 3747 levels.

As overall trend remains firm, Dec prices are likely to continue its bullish momentum towards 3800 followed by 3850 levels in near future but before that prices could retest 3700-3690 levels down. Any strong break and close below 3650 can change our bias.



ZINC MIXED

RANGE : 205.00 - 212.00

What Chart Says :

Dec Zinc has witnessed positive momentum from day's low of 203.05 and finally ended its day at 210 levels.

Trend remains mixed for the day between 205 - 212 levels. Any strong close below 205 can attract further selling interest.



Registered Office:#15-8-1/2/3, 2nd floor, Sliddiamber Bazar, Hyderabad - 500012, Telangana State. INDIA.

Corporate Office: #3-6-196/197, Pnme Plaza, 2nd floor, flat No. 204 A & B, H1mayath Nagar, Hyderabad - 500029, Telangana State.INDIA.

Ph:+91-40-64645000,Fax: +91-40-23262166,E-mail:support@basanonline.com,Website:www.basanonline.com



BASAN COMMODITY LIMITED

DAILY COMMODITY REPORT 4th Dec2017

COMMODITIES	TREND	R1	R2	R3	PIVOT POINT	S1	S2	S3	Close
ALUMINI 31JAN2018	BULLISH	135.33	136.16	138.36	133.96	133.13	131.76	129.56	134.5
ALUMINI 29DEC2017	BULLISH	134.71	135.68	138.13	133.23	132.26	130.78	128.33	133.75
ALUMINIUM 31JAN2018	BULLISH	135.35	136.2	138.45	133.95	133.1	131.7	129.45	134.5
ALUMINIUM 29DEC2017	BULLISH	134.63	135.51	137.71	133.31	132.43	131.11	128.91	133.75
CARDAMOM 15FEB2018	BULLISH	1061.06	1073.03	1098.03	1048.03	1036.06	1023.03	998.03	1049.1
CARDAMOM 15JAN2018	BULLISH	1043.33	1055.06	1079.96	1030.16	1018.43	1005.26	980.36	1031.6
CARDAMOM 15DEC2017	BULLISH	979.86	987.63	1009.83	965.43	957.66	943.23	921.03	972.1
COPPER 30APR2018	BULLISH	451.28	454.46	460.96	447.96	444.78	441.46	434.96	448.1
COPPER 28FEB2018	BEARISH	448.05	451.85	459.35	444.35	440.55	436.85	429.35	444.25
COPPERM 30APR2018	BULLISH	451.43	454.86	461.81	447.91	444.48	440.96	434.01	448
COPPERM 28FEB2018	BULLISH	448.23	452.16	460.06	444.26	440.33	436.36	428.46	444.3
COTTON 31JAN2018	BULLISH	19123.3	19196.7	19406.7	18986.66	18913.3	18776.7	18566.7	19050
COTTON 29DEC2017	BULLISH	18913.3	18976.7	19156.7	18796.66	18733.3	18616.7	18436.7	18850
CPO 28MAR2018	BEARISH	590.53	591.46	593.16	589.76	588.83	588.06	586.36	589.6
CPO 28FEB2018	BULLISH	589.83	591.16	594.36	587.96	586.63	584.76	581.56	588.5
CPO 31JAN2018	BULLISH	587.13	588.36	591.16	585.56	584.33	582.76	579.96	585.9
CPO 29DEC2017	BULLISH	585.96	587.53	590.83	584.23	582.66	580.93	577.63	584.4
CRUDEOIL 19APR2018	BULLISH	3825.33	3855.66	3924.66	3786.66	3756.33	3717.66	3648.66	3795
CRUDEOIL 19MAR2018	BEARISH	3791.66	3835.33	3903.33	3767.33	3723.66	3699.33	3631.33	3748
CRUDEOIL 16FEB2018	BULLISH	3828.33	3859.66	3933.66	3785.66	3754.33	3711.66	3637.66	3797
CRUDEOIL 19JAN2018	BULLISH	3813.66	3853.33	3934.33	3772.33	3732.66	3691.33	3610.33	3774
CRUDEOIL 18DEC2017	BULLISH	3805.33	3848.66	3938.66	3758.66	3715.33	3668.66	3578.66	3762
CRUDEOILM 19APR2018	BEARISH	3788	3823	3883	3763	3728	3703	3643	3753
CRUDEOILM 19MAR2018	BULLISH	3801	3811	3831	3791	3781	3771	3751	3791
CRUDEOILM 16FEB2018	BULLISH	3823.33	3860.66	3938.66	3782.66	3745.33	3704.66	3626.66	3786
CRUDEOILM 19JAN2018	BULLISH	3817	3858	3945	3771	3730	3684	3597	3776
CRUDEOILM 18DEC2017	BULLISH	3807	3851	3946	3756	3712	3661	3566	3763
GOLD 05APR2018	BULLISH	29548.3	29642.7	29875.7	29409.66	29315.3	29176.7	28943.7	29454
GOLD 05FEB2018	BULLISH	29546.7	29698.3	30038.3	29358.33	29206.7	29018.3	28678.3	29395
GOLD 29JAN2018	BULLISH	80	87	101	73	66	59	45	73
GOLD 29JAN2018	BULLISH	57	65	81	49	41	33	17	49
GOLD 29JAN2018	BULLISH	55	55.5	56.5	54.5	54	53.5	52.5	54.5
GOLD 29JAN2018	BULLISH	529.66	602.83	780.83	424.83	351.66	246.83	68.83	456.5
GOLD 29JAN2018	BULLISH	312.66	370.33	499.33	241.33	183.66	112.33	-16.66	255
GOLD 29JAN2018	BULLISH	231.33	263.16	340.16	186.16	154.33	109.16	32.16	199.5
GOLD 29JAN2018	BEARISH	204.16	263.33	360.83	165.83	106.66	68.33	-29.16	145
GOLD 29JAN2018	BULLISH	168	193	251	135	110	77	19	143

Registered Office:#15-8-1/2/3, 2nd floor, Sliddiamber Bazar, Hyderabad - 500012, Telangana State. INDIA.

Corporate Office: #3-6-196/197, Pnme Plaza, 2nd floor, flat No. 204 A & B, H1mayath Nagar, Hyderabad - 500029, Telangana State.INDIA.

Ph:+91-40-64645000,Fax: +91-40-23262166,E-mail:support@basanonline.com,Website:www.basanonline.com



BASAN COMMODITY LIMITED

DAILY COMMODITY REPORT 4th Dec2017

COMMODITIES	TREND	R1	R2	R3	PIVOT POINT	S1	S2	S3	Close
GOLD 29JAN2018	BULLISH	159.66	182.33	247.33	117.33	94.66	52.33	-12.66	137
GOLD 29JAN2018	BULLISH	133.33	146.66	176.66	116.66	103.33	86.66	56.66	120
GOLD 05DEC2017	BULLISH	29305.3	29401.7	29630.7	29172.66	29076.3	28943.7	28714.7	29209
GOLDGUINEA 31JAN2018	BULLISH	23706.7	23783.3	23963.3	23603.33	23526.7	23423.3	23243.3	23630
GOLDGUINEA 29DEC2017	BULLISH	23703	23788	23981	23595	23510	23402	23209	23618
GOLDM 05FEB2018	BULLISH	29559.7	29710.3	30036.3	29384.33	29233.7	29058.3	28732.3	29409
GOLDM 05JAN2018	BULLISH	29528	29687	30035	29339	29180	28991	28643	29369
GOLDM 05DEC2017	BULLISH	29361.3	29505.7	29811.7	29199.66	29055.3	28893.7	28587.7	29217
GOLDPETAL 31JAN2018	BULLISH	2961.66	2972.33	3001.33	2943.33	2932.66	2914.33	2885.33	2951
GOLDPETAL 29DEC2017	BULLISH	2954	2963	2986	2940	2931	2917	2894	2945
LEAD 31JAN2018	BULLISH	166.36	168.08	173.08	163.08	161.36	158.08	153.08	164.65
LEAD 29DEC2017	BULLISH	166.43	168.31	173.71	162.91	161.03	157.51	152.11	164.55
LEADMINI 31JAN2018	BULLISH	166.48	168.31	173.56	163.06	161.23	157.81	152.56	164.65
LEADMINI 29DEC2017	BULLISH	166.43	168.31	173.71	162.91	161.03	157.51	152.11	164.55
MENTHAOIL 28FEB2018	BULLISH	1936.53	1957.16	1999.46	1914.86	1894.23	1872.56	1830.26	1915.9
MENTHAOIL 31JAN2018	BULLISH	1975.53	2006.06	2094.36	1917.76	1887.23	1829.46	1741.16	1945
MENTHAOIL 29DEC2017	BULLISH	1964.23	2005.26	2115.26	1895.26	1854.23	1785.26	1675.26	1923.2
NATURALGAS 23FEB2018	BULLISH	201.76	203.83	208.43	199.23	197.16	194.63	190.03	199.7
NATURALGAS 25JAN2018	BEARISH	202.6	205.3	210.5	200.1	197.4	194.9	189.7	199.9
NATURALGAS 26DEC2017	BEARISH	201.73	204.66	210.46	198.86	195.93	193.06	187.26	198.8
NICKEL 28FEB2018	BULLISH	749.2	759.6	784.1	735.1	724.7	710.6	686.1	738.8
NICKEL 31JAN2018	BULLISH	748.13	759.86	789.46	730.26	718.53	700.66	671.06	736.4
NICKEL 29DEC2017	BULLISH	743.36	755.33	785.43	725.23	713.26	695.13	665.03	731.4
NICKELM 28FEB2018	BULLISH	744.23	756.16	780.86	731.46	719.53	706.76	682.06	732.3
NICKELM 31JAN2018	BULLISH	748.36	760.03	789.73	730.33	718.66	700.63	670.93	736.7
NICKELM 29DEC2017	BULLISH	743.46	755.43	785.53	725.33	713.36	695.23	665.13	731.5
SILVER 05JUL2018	BULLISH	39693	39871	40240	39502	39324	39133	38764	39515
SILVER 04MAY2018	BULLISH	39316	39613	40228	38998	38701	38383	37768	39019
SILVER 05MAR2018	BEARISH	38771.7	39097.3	39745.3	38449.33	38123.7	37801.3	37153.3	38446
SILVER 05DEC2017	BEARISH	37934.7	38287.3	38957.3	37617.33	37264.7	36947.3	36277.3	37582
SILVERM 29JUN2018	BULLISH	39552	39552	39552	39552	39552	39552	39552	39552
SILVERM 30APR2018	BULLISH	39339.3	39645.7	40258.7	39032.66	38726.3	38419.7	37806.7	39033
SILVERM 28FEB2018	BULLISH	38805.3	39122.7	39762.7	38482.66	38165.3	37842.7	37202.7	38488
SILVERMIC 30APR2018	BULLISH	39368.3	39652.7	40250.7	39054.66	38770.3	38456.7	37858.7	39084
SILVERMIC 28FEB2018	BULLISH	38802.3	39113.7	39741.7	38485.66	38174.3	37857.7	37229.7	38491
ZINC 28FEB2018	BULLISH	210.53	213.51	219.76	207.26	204.28	201.01	194.76	207.55
ZINC 31JAN2018	BULLISH	213.26	216.53	225.08	207.98	204.71	199.43	190.88	210

Registered Office:#15-8-1/2/3, 2nd floor, Slddiamber Bazar, Hyderabad - 500012, Telangana State. INDIA.

Corporate Office: #3-6-196/197, Pnme Plaza, 2nd floor, flat No. 204 A & B, H1mayath Nagar, Hyderabad - 500029, Telangana State.INDIA.

Ph:+91-40-64645000,Fax: +91-40-23262166,E-mail:support@basanonline.com,Website:www.basanonline.com



BASAN COMMODITY LIMITED

DAILY COMMODITY REPORT 4th Dec2017

COMMODITIES	TREND	R1	R2	R3	PIVOT POINT	S1	S2	S3	Close
ZINC 29DEC2017	BULLISH	213.08	216.16	224.26	208.06	204.98	199.96	191.86	210
ZINCMINI 28FEB2018	BULLISH	211.9	213.75	218.35	209.15	207.3	204.55	199.95	210.05
ZINCMINI 31JAN2018	BULLISH	213	216.1	224.15	208.05	204.95	200	191.95	209.9
ZINCMINI 29DEC2017	BULLISH	213.03	216.06	224.06	208.06	205.03	200.06	192.06	210

Registered Office:#15-8-1/2/3, 2nd floor, Slddiamber Bazar, Hyderabad - 500012, Telangana State. INDIA.

Corporate Office: #3-6-196/197, Pnme Plaza, 2nd floor, flat No. 204 A & B, H1mayath Nagar, Hyderabad - 500029, Telangana State.INDIA.

Ph:+91-40-64645000,Fax: +91-40-23262166,E-mail:support@basanonline.com,Website:www.basanonline.com