

GOLD BEARISH

RANGE : 29300 - 29000

What Chart Says :

Apr Gold prices has opened at 29380 and witnessed selling interest, finally settled on weak note at 29146 levels.

Price has settled well below key levels which is at 29300. Till price manages to trade below these levels, our bias remains weak, targeting 29000 followed by 28750 levels. Any strong break and close above 29300 levels can only attract buying interest.



SILVER NEGATIVE

RANGE : 38000 - 37000

What Chart Says :

Mar Silver has opened at 37521 levels, witnessed selling interest and settled at 37532 levels.

For the day trend remains weak. By testing 37800 levels on upper end prices could continue its negative momentum towards 37200 followed by 36800 levels. Any strong break and close above 37850 only can change its bearish bias.



CRUDE OIL STRONG

RANGE : 3650 - 3750

What Chart Says :

Dec Crude Oil has opened at 3684 levels, witnessed mixed sentiment and ended its day at 3687 by posting a high of 3747 levels.

As overall trend remains firm, Dec prices are likely to continue its bullish momentum towards 3750 followed by 3800 levels in near future but before that prices could retest 3650-3660 levels down. Any strong break and close below 3650 can change our bias.



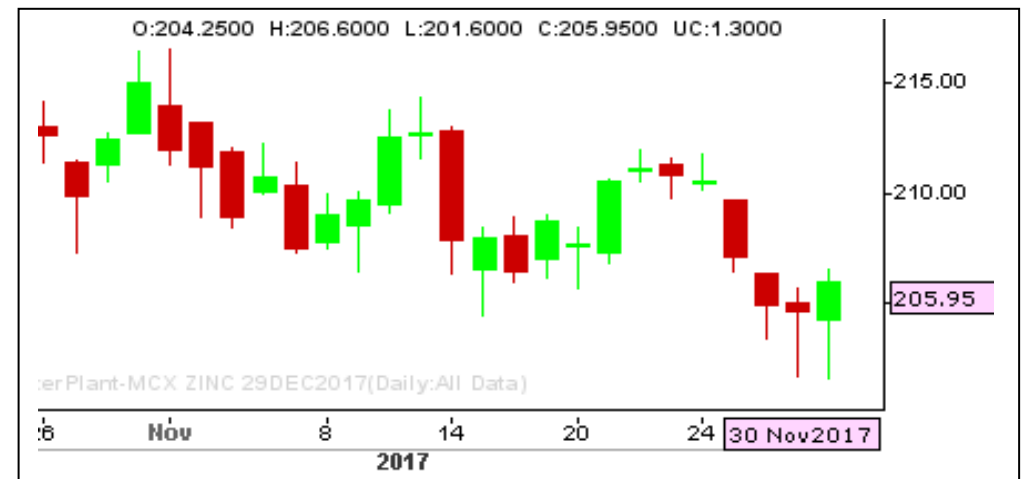
ZINC MIXED

RANGE : 204 - 208

What Chart Says :

Dec Zinc has witnessed some positive momentum from day's low of 201.60 and finally ended its day at 205.95 levels.

Trend remains mixed for the day between 203 - 205 levels. Any strong close below 204 can attract further selling interest.



Registered Office:#15-8-1/2/3, 2nd floor, Sllddiamber Bazar, Hyderabad - 500012, Telangana State. INDIA.

Corporate Office: #3-6-196/197, Pnme Plaza, 2nd floor, flat No. 204 A & B, H1mayath Nagar, Hyderabad - 500029, Telangana State.INDIA.

Ph:+91-40-64645000,Fax: +91-40-23262166,E-mail:support@basanonline.com,Website:www.basanonline.com



BASAN COMMODITY LIMITED

DAILY COMMODITY REPORT 01st Dec 2017

| COMMODITIES | TREND | R1 | R2 | R3 | PIVOT POINT | S1 | S2 | S3 | Close |
|---------------------|---------|---------|---------|---------|-------------|---------|---------|---------|--------|
| ALUMINI 31JAN2018 | BEARISH | 133.36 | 134.33 | 135.98 | 132.68 | 131.71 | 131.03 | 129.38 | 132.4 |
| ALUMINI 29DEC2017 | BEARISH | 132.78 | 133.81 | 135.66 | 131.96 | 130.93 | 130.11 | 128.26 | 131.75 |
| ALUMINIUM 31JAN2018 | BEARISH | 133.43 | 134.41 | 136.06 | 132.76 | 131.78 | 131.11 | 129.46 | 132.45 |
| ALUMINIUM 29DEC2017 | BEARISH | 132.88 | 133.96 | 135.91 | 132.01 | 130.93 | 130.06 | 128.11 | 131.8 |
| CARDAMOM 15FEB2018 | BULLISH | 1044.13 | 1053.06 | 1075.06 | 1031.06 | 1022.13 | 1009.06 | 987.06 | 1035.2 |
| CARDAMOM 15JAN2018 | BULLISH | 1028.43 | 1040.16 | 1069.16 | 1011.16 | 999.43 | 982.16 | 953.16 | 1016.7 |
| CARDAMOM 15DEC2017 | BULLISH | 961.06 | 977.23 | 1012.43 | 942.03 | 925.86 | 906.83 | 871.63 | 944.9 |
| COPPER 30APR2018 | BEARISH | 446.86 | 449.18 | 453.63 | 444.73 | 442.41 | 440.28 | 435.83 | 444.55 |
| COPPER 28FEB2018 | BEARISH | 443.28 | 446.16 | 451.51 | 440.81 | 437.93 | 435.46 | 430.11 | 440.4 |
| COPPERM 30APR2018 | BEARISH | 446.75 | 449.35 | 454.2 | 444.5 | 441.9 | 439.65 | 434.8 | 444.15 |
| COPPERM 28FEB2018 | BEARISH | 443.23 | 446.06 | 451.36 | 440.76 | 437.93 | 435.46 | 430.16 | 440.4 |
| COTTON 31JAN2018 | BULLISH | 18980 | 19050 | 19200 | 18900 | 18830 | 18750 | 18600 | 18910 |
| COTTON 29DEC2017 | BULLISH | 18823.3 | 18886.7 | 19036.7 | 18736.66 | 18673.3 | 18586.7 | 18436.7 | 18760 |
| CPO 28MAR2018 | BULLISH | 592.56 | 596.93 | 605.73 | 588.13 | 583.76 | 579.33 | 570.53 | 588.2 |
| CPO 28FEB2018 | BULLISH | 593.53 | 596.16 | 602.96 | 589.36 | 586.73 | 582.56 | 575.76 | 590.9 |
| CPO 31JAN2018 | BULLISH | 590.33 | 593.16 | 599.16 | 587.16 | 584.33 | 581.16 | 575.16 | 587.5 |
| CPO 29DEC2017 | BULLISH | 589.63 | 592.86 | 599.96 | 585.76 | 582.53 | 578.66 | 571.56 | 586.4 |
| CRUDEOIL 16FEB2018 | BULLISH | 3760.66 | 3774.33 | 3802.33 | 3746.33 | 3732.66 | 3718.33 | 3690.33 | 3747 |
| CRUDEOIL 19JAN2018 | BEARISH | 3746.33 | 3788.66 | 3859.66 | 3717.66 | 3675.33 | 3646.66 | 3575.66 | 3704 |
| CRUDEOIL 18DEC2017 | BEARISH | 3732.66 | 3778.33 | 3855.33 | 3701.33 | 3655.66 | 3624.33 | 3547.33 | 3687 |
| CRUDEOILM 19APR2018 | BULLISH | 3781.33 | 3803.66 | 3849.66 | 3757.66 | 3735.33 | 3711.66 | 3665.66 | 3759 |
| CRUDEOILM 19MAR2018 | BULLISH | 3770 | 3792 | 3836 | 3748 | 3726 | 3704 | 3660 | 3748 |
| CRUDEOILM 16FEB2018 | BEARISH | 3751 | 3788 | 3847 | 3729 | 3692 | 3670 | 3611 | 3714 |
| CRUDEOILM 19JAN2018 | BEARISH | 3744.66 | 3787.33 | 3858.33 | 3716.33 | 3673.66 | 3645.33 | 3574.33 | 3702 |
| CRUDEOILM 18DEC2017 | BEARISH | 3730.33 | 3774.66 | 3847.66 | 3701.66 | 3657.33 | 3628.66 | 3555.66 | 3686 |
| GOLD 05APR2018 | BEARISH | 29386.7 | 29552.3 | 29835.3 | 29269.33 | 29103.7 | 28986.3 | 28703.3 | 29221 |
| GOLD 05FEB2018 | BEARISH | 29321.7 | 29497.3 | 29775.3 | 29219.33 | 29043.7 | 28941.3 | 28663.3 | 29146 |
| GOLD 29JAN2018 | BEARISH | 92.66 | 118.33 | 162.33 | 74.33 | 48.66 | 30.33 | -13.66 | 67 |
| GOLD 29JAN2018 | BULLISH | 66 | 68 | 72 | 64 | 62 | 60 | 56 | 64 |
| GOLD 29JAN2018 | BULLISH | 56 | 65.5 | 89 | 42 | 32.5 | 18.5 | -5 | 46.5 |
| GOLD 29JAN2018 | BULLISH | 50 | 50 | 50 | 50 | 50 | 50 | 50 | 50 |
| GOLD 29JAN2018 | BEARISH | 383 | 466.5 | 616.5 | 316.5 | 233 | 166.5 | 16.5 | 299.5 |
| GOLD 29JAN2018 | BULLISH | 208.33 | 239.66 | 310.66 | 168.66 | 137.33 | 97.66 | 26.66 | 177 |
| GOLD 29JAN2018 | BULLISH | 203.66 | 226.83 | 276.83 | 176.83 | 153.66 | 126.83 | 76.83 | 180.5 |
| GOLD 29JAN2018 | BEARISH | 162.16 | 189.33 | 239.83 | 138.83 | 111.66 | 88.33 | 37.83 | 135 |
| GOLD 29JAN2018 | BEARISH | 139.33 | 170.66 | 226.66 | 114.66 | 83.33 | 58.66 | 2.66 | 108 |
| GOLD 05DEC2017 | BEARISH | 29208.7 | 29405.3 | 29731.3 | 29079.33 | 28882.7 | 28753.3 | 28427.3 | 29012 |

Registered Office:#15-8-1/2/3, 2nd floor, Slddiamber Bazar, Hyderabad - 500012, Telangana State. INDIA.

Corporate Office: #3-6-196/197, Pnme Plaza, 2nd floor, flat No. 204 A & B, H1mayath Nagar, Hyderabad - 500029, Telangana State.INDIA.

Ph:+91-40-64645000,Fax: +91-40-23262166,E-mail:support@basanonline.com,Website:www.basanonline.com



BASAN COMMODITY LIMITED

DAILY COMMODITY REPORT 01st Dec 2017

| COMMODITIES | TREND | R1 | R2 | R3 | PIVOT POINT | S1 | S2 | S3 | Close |
|----------------------|---------|---------|---------|---------|-------------|---------|---------|---------|--------|
| GOLDGUINEA 31JAN2018 | BULLISH | 23642 | 23686 | 23796 | 23576 | 23532 | 23466 | 23356 | 23598 |
| GOLDGUINEA 29DEC2017 | BEARISH | 23609.3 | 23735.7 | 23948.7 | 23522.66 | 23396.3 | 23309.7 | 23096.7 | 23483 |
| GOLDM 05FEB2018 | BEARISH | 29360 | 29555 | 29872 | 29238 | 29043 | 28921 | 28604 | 29165 |
| GOLDM 05JAN2018 | BEARISH | 29287.7 | 29474.3 | 29771.3 | 29177.33 | 28990.7 | 28880.3 | 28583.3 | 29101 |
| GOLDM 05DEC2017 | BEARISH | 29210.3 | 29428.7 | 29788.7 | 29068.66 | 28850.3 | 28708.7 | 28348.7 | 28992 |
| GOLDPETAL 31JAN2018 | BEARISH | 2947 | 2963 | 2990 | 2936 | 2920 | 2909 | 2882 | 2931 |
| GOLDPETAL 29DEC2017 | BEARISH | 2940.33 | 2953.66 | 2976.66 | 2930.66 | 2917.33 | 2907.66 | 2884.66 | 2927 |
| LEAD 31JAN2018 | BULLISH | 161.6 | 163 | 166.55 | 159.45 | 158.05 | 155.9 | 152.35 | 160.2 |
| LEAD 29DEC2017 | BULLISH | 161.7 | 163.25 | 167.25 | 159.25 | 157.7 | 155.25 | 151.25 | 160.15 |
| LEADMINI 31JAN2018 | BULLISH | 161.78 | 163.16 | 166.81 | 159.51 | 158.13 | 155.86 | 152.21 | 160.4 |
| LEADMINI 29DEC2017 | BULLISH | 161.65 | 163.15 | 167.05 | 159.25 | 157.75 | 155.35 | 151.45 | 160.15 |
| MENTHAOIL 28FEB2018 | BEARISH | 1915.83 | 1936.06 | 1974.36 | 1897.76 | 1877.53 | 1859.46 | 1821.16 | 1895.6 |
| MENTHAOIL 31JAN2018 | BULLISH | 1919.53 | 1947.46 | 2008.66 | 1886.26 | 1858.33 | 1825.06 | 1763.86 | 1891.6 |
| MENTHAOIL 29DEC2017 | BULLISH | 1895.63 | 1923.76 | 1991.66 | 1855.86 | 1827.73 | 1787.96 | 1720.06 | 1867.5 |
| NATURALGAS 23FEB2018 | BEARISH | 203.1 | 208.7 | 217.4 | 200 | 194.4 | 191.3 | 182.6 | 197.5 |
| NATURALGAS 25JAN2018 | BEARISH | 204.76 | 210.93 | 220.63 | 201.23 | 195.06 | 191.53 | 181.83 | 198.6 |
| NATURALGAS 26DEC2017 | BEARISH | 203.8 | 210.5 | 221 | 200 | 193.3 | 189.5 | 179 | 197.1 |
| NICKEL 31JAN2018 | BEARISH | 736.2 | 746.6 | 764.1 | 729.1 | 718.7 | 711.6 | 694.1 | 725.8 |
| NICKEL 29DEC2017 | BEARISH | 730 | 739.9 | 755.7 | 724.1 | 714.2 | 708.3 | 692.5 | 720.1 |
| NICKELM 28FEB2018 | BULLISH | 732.33 | 732.86 | 733.96 | 731.76 | 731.23 | 730.66 | 729.56 | 731.8 |
| NICKELM 31JAN2018 | BEARISH | 735.33 | 745.06 | 760.46 | 729.66 | 719.93 | 714.26 | 698.86 | 725.6 |
| NICKELM 29DEC2017 | BEARISH | 730.36 | 740.53 | 756.63 | 724.43 | 714.26 | 708.33 | 692.23 | 720.2 |
| SILVER 05JUL2018 | BULLISH | 39705.3 | 39782.7 | 39937.7 | 39627.66 | 39550.3 | 39472.7 | 39317.7 | 39628 |
| SILVER 04MAY2018 | BEARISH | 39283.7 | 39609.3 | 40154.3 | 39064.33 | 38738.7 | 38519.3 | 37974.3 | 38958 |
| SILVER 05MAR2018 | BEARISH | 38703 | 39059 | 39624 | 38494 | 38138 | 37929 | 37364 | 38347 |
| SILVER 05DEC2017 | BEARISH | 37946 | 38360 | 39036 | 37684 | 37270 | 37008 | 36332 | 37532 |
| SILVERM 29JUN2018 | BULLISH | 39938 | 39938 | 39938 | 39938 | 39938 | 39938 | 39938 | 39938 |
| SILVERM 30APR2018 | BEARISH | 39316.7 | 39624.3 | 40124.3 | 39124.33 | 38816.7 | 38624.3 | 38124.3 | 39009 |
| SILVERM 28FEB2018 | BEARISH | 38754 | 39117 | 39702 | 38532 | 38169 | 37947 | 37362 | 38391 |
| SILVERMIC 30APR2018 | BEARISH | 39718.7 | 40435.3 | 41545.3 | 39325.33 | 38608.7 | 38215.3 | 37105.3 | 39002 |
| SILVERMIC 28FEB2018 | BEARISH | 38762.3 | 39129.7 | 39727.7 | 38531.66 | 38164.3 | 37933.7 | 37335.7 | 38395 |
| ZINC 31JAN2018 | BULLISH | 206.26 | 208.23 | 212.33 | 204.13 | 202.16 | 200.03 | 195.93 | 204.3 |
| ZINC 29DEC2017 | BULLISH | 206.5 | 208.55 | 212.8 | 204.3 | 202.25 | 200.05 | 195.8 | 204.45 |
| ZINCMINI 28FEB2018 | BULLISH | 206.03 | 207.71 | 211.41 | 204.01 | 202.33 | 200.31 | 196.61 | 204.35 |
| ZINCMINI 31JAN2018 | BULLISH | 206.4 | 208.35 | 212.65 | 204.05 | 202.1 | 199.75 | 195.45 | 204.45 |
| ZINCMINI 29DEC2017 | BULLISH | 206.45 | 208.5 | 212.7 | 204.3 | 202.25 | 200.1 | 195.9 | 204.4 |

Registered Office:#15-8-1/2/3, 2nd floor, Slddiamber Bazar, Hyderabad - 500012, Telangana State. INDIA.

Corporate Office: #3-6-196/197, Pnme Plaza, 2nd floor, flat No. 204 A & B, H1mayath Nagar, Hyderabad - 500029, Telangana State.INDIA.

Ph:+91-40-64645000,Fax: +91-40-23262166,E-mail:support@basanonline.com,Website:www.basanonline.com



BASAN COMMODITY LIMITED

DAILY COMMODITY REPORT 01st Dec 2017

Registered Office:#15-8-1/2/3, 2nd floor, Slddiamber Bazar, Hyderabad - 500012, Telangana State. INDIA.
Corporate Office: #3-6-196/197, Pnme Plaza, 2nd floor, flat No. 204 A & B, H1mayath Nagar, Hyderabad - 500029, Telangana State.INDIA.
Ph:+91-40-64645000,Fax: +91-40-23262166,E-mail:support@basanonline.com,Website:www.basanonline.com