

GOLD MIXED

RANGE : 29400 - 29600

What Chart Says :

Dec Gold price has settled flat note at 29503 levels by posting a high of 29536 and low of 29445 levels.

Thursday's close is indicating indecisive but short term charts are looking weak but strong break and close below 29440 is required to confirm the same as these levels have been acting as strong base for the past six sessions. Resistance levels are eyed at 29540-550 levels



SILVER MIXED

RANGE : 39400 - 40150

What Chart Says :

Dec Silver has settled at 39799 levels, gained from day's low of 39583 levels.

Till price manages to trade below 40150 levels and above 39500 levels, our bias remains mixed. For the past one month prices has been strongly holding well below 40150 levels and forming base at 39500-400 levels. To attract any positive momentum prices must breach 40150 levels or 39400 levels down for negative sentiment.



Registered Office:#15-8-1/2/3, 2nd floor, Slddiamber Bazar, Hyderabad - 500012, Telangana State. INDIA.

Corporate Office: #3-6-196/197, Pnme Plaza, 2nd floor, flat No. 204 A & B, H1mayath Nagar, Hyderabad - 500029, Telangana State.INDIA.

Ph:+91-40-64645000,Fax: +91-40-23262166,E-mail:support@basanonline.com,Website:www.basanonline.com

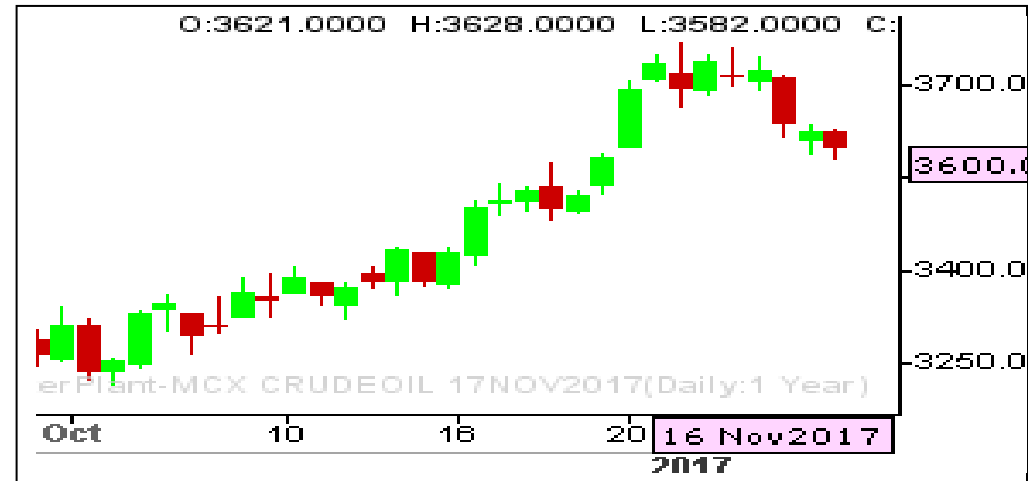
CRUDE OIL WEAK

RANGE : 3680 - 3540

What Chart Says :

Nov Crude Oil has witnessed selling interest on Thursday and finally settled at 3600 by posting a high of 3628 levels.

For the day trend remains weak and is expected to trade sideways to lower towards 3570 followed by 3540 levels. The current corrective weakness could exhaust at 3540 levels or at 3470 levels. Alternatively any strong close above 3680 can push prices higher again.



ZINC WEAK

RANGE : 210.00 - 200.00

What Chart Says :

Nov Zinc has witnessed selling interest and finally ended its day at 206.45 levels by posting a high of 208.95 levels

For the day trend remains weak and is likely to extend towards 205.50 levels followed by 202.50 levels. The current corrective declines could extend for the time being, targeting 200 levels for the medium term. Any strong close above 213 can change our bias.



Hold Sell initiated at 208-209 levels with stop above 214.50 with the price objective of 204 followed by 200 levels.



BASAN COMMODITY LIMITED

DAILY COMMODITY REPORT 17th Nov 2017

COMMODITIES	TREND	R1	R2	R3	PIVOT POINT	S1	S2	S3	Close
ALUMINI 31JAN2018	BEARISH	139.43	140.36	142.16	138.56	137.63	136.76	134.96	138.5
ALUMINI 29DEC2017	BEARISH	138.55	139.85	141.9	137.8	136.5	135.75	133.7	137.25
ALUMINI 30NOV2017	BEARISH	138.06	139.58	141.98	137.18	135.66	134.78	132.38	136.55
ALUMINIUM 29DEC2017	BEARISH	138.53	139.86	141.96	137.76	136.43	135.66	133.56	137.2
ALUMINIUM 30NOV2017	BEARISH	137.96	139.38	141.63	137.13	135.71	134.88	132.63	136.55
CARDAMOM 15JAN2018	BULLISH	1046.13	1054.36	1072.16	1036.56	1028.33	1018.76	1000.96	1037.9
CARDAMOM 15DEC2017	BEARISH	1025.33	1037.66	1061.66	1013.66	1001.33	989.66	965.66	1013
COPPER 30APR2018	BEARISH	451.53	453.06	456.11	450.01	448.48	446.96	443.91	450
COPPER 28FEB2018	BEARISH	448.9	452.4	458.45	446.35	442.85	440.3	434.25	445.4
COPPER 30NOV2017	BEARISH	442.95	446.6	452.95	440.25	436.6	433.9	427.55	439.3
COPPERM 30APR2018	BEARISH	451.9	454.4	458.35	450.45	447.95	446.5	442.55	449.4
COPPERM 28FEB2018	BEARISH	448.96	452.48	458.53	446.43	442.91	440.38	434.33	445.45
COPPERM 30NOV2017	BEARISH	442.83	446.41	452.61	440.21	436.63	434.01	427.81	439.25
COTTON 31JAN2018	BULLISH	18533.3	18596.7	18756.7	18436.66	18373.3	18276.7	18116.7	18470
COTTON 29DEC2017	BULLISH	18430	18490	18630	18350	18290	18210	18070	18370
COTTON 30NOV2017	BULLISH	18423.3	18476.7	18586.7	18366.66	18313.3	18256.7	18146.7	18370
CPO 31JAN2018	BEARISH	564.06	573.73	589.43	558.03	548.36	542.33	526.63	554.4
CPO 29DEC2017	BEARISH	559.83	569.66	585.16	554.16	544.33	538.66	523.16	550
CPO 30NOV2017	BEARISH	554.2	565	581.9	548.1	537.3	531.2	514.3	543.4
CRUDEOIL 19MAR2018	BEARISH	3692.66	3701.33	3717.33	3685.33	3676.66	3669.33	3653.33	3684
CRUDEOIL 16FEB2018	BULLISH	3651	3651	3651	3651	3651	3651	3651	3651
CRUDEOIL 19JAN2018	BEARISH	3666.66	3686.33	3723.33	3649.33	3629.66	3612.33	3575.33	3647
CRUDEOIL 18DEC2017	BEARISH	3668.66	3710.33	3782.33	3638.33	3596.66	3566.33	3494.33	3627
CRUDEOIL 17NOV2017	BEARISH	3624.66	3649.33	3695.33	3603.33	3578.66	3557.33	3511.33	3600
CRUDEOILM 19APR2018	BULLISH	3711.66	3723.33	3749.33	3697.33	3685.66	3671.33	3645.33	3700
CRUDEOILM 16FEB2018	BULLISH	3685	3685	3685	3685	3685	3685	3685	3685
CRUDEOILM 19JAN2018	BEARISH	3667.66	3689.33	3730.33	3648.33	3626.66	3607.33	3566.33	3646
CRUDEOILM 18DEC2017	BEARISH	3653.66	3681.33	3732.33	3630.33	3602.66	3579.33	3528.33	3626
CRUDEOILM 17NOV2017	BEARISH	3624.66	3649.33	3695.33	3603.33	3578.66	3557.33	3511.33	3600
GOLD 05APR2018	BULLISH	29741	29770	29847	29693	29664	29616	29539	29712
GOLD 05FEB2018	BULLISH	29698.7	29734.3	29817.3	29651.33	29615.7	29568.3	29485.3	29663
GOLD 05DEC2017	BULLISH	29544.3	29585.7	29676.7	29494.66	29453.3	29403.7	29312.7	29503
GOLD 28NOV2017	BEARISH	84.33	93.66	111.66	75.66	66.33	57.66	39.66	75
GOLD 28NOV2017	BULLISH	55	55	55	55	55	55	55	55
GOLD 28NOV2017	BULLISH	520	523	529	517	514	511	505	517
GOLD 28NOV2017	BEARISH	49.83	57.66	72.16	43.16	35.33	28.66	14.16	42
GOLD 28NOV2017	BULLISH	37.66	40.33	46.33	34.33	31.66	28.33	22.33	35

Registered Office:#15-8-1/2/3, 2nd floor, Sliddiamber Bazar, Hyderabad - 500012, Telangana State. INDIA.

Corporate Office: #3-6-196/197, Pnme Plaza, 2nd floor, flat No. 204 A & B, H1mayath Nagar, Hyderabad - 500029, Telangana State.INDIA.

Ph:+91-40-64645000,Fax: +91-40-23262166,E-mail:support@basanonline.com,Website:www.basanonline.com



BASAN COMMODITY LIMITED

DAILY COMMODITY REPORT 17th Nov 2017

COMMODITIES	TREND	R1	R2	R3	PIVOT POINT	S1	S2	S3	Close
GOLD 28NOV2017	BULLISH	300	300	300	300	300	300	300	300
GOLD 28NOV2017	BULLISH	29	33.5	42.5	24.5	20	15.5	6.5	24.5
GOLD 28NOV2017	BULLISH	250	250	250	250	250	250	250	250
GOLD 28NOV2017	BEARISH	180	195.5	226	165	149.5	134.5	104	164.5
GOLD 28NOV2017	BEARISH	167.33	180.66	202.66	158.66	145.33	136.66	114.66	154
GOLD 28NOV2017	BULLISH	130	130	130	130	130	130	130	130
GOLD 28NOV2017	BEARISH	129	137.5	153.5	121.5	113	105.5	89.5	120.5
GOLDGUINEA 29DEC2017	BULLISH	23803.3	23821.7	23861.7	23781.66	23763.3	23741.7	23701.7	23785
GOLDGUINEA 30NOV2017	BEARISH	23752	23782	23834	23730	23700	23678	23626	23722
GOLDM 05FEB2018	BULLISH	29677.3	29705.7	29764.7	29646.66	29618.3	29587.7	29528.7	29649
GOLDM 05JAN2018	BEARISH	29634.3	29673.7	29741.7	29605.66	29566.3	29537.7	29469.7	29595
GOLDM 05DEC2017	BEARISH	29546.7	29602.3	29705.3	29499.33	29443.7	29396.3	29293.3	29491
GOLDPETAL 31JAN2018	BEARISH	2990	3002	3024	2980	2968	2958	2936	2978
GOLDPETAL 29DEC2017	BEARISH	2968.66	2972.33	2979.33	2965.33	2961.66	2958.33	2951.33	2965
GOLDPETAL 30NOV2017	BEARISH	2959.66	2963.33	2970.33	2956.33	2952.66	2949.33	2942.33	2956
LEAD 29DEC2017	BEARISH	158.98	160.71	163.41	158.01	156.28	155.31	152.61	157.25
LEAD 30NOV2017	BEARISH	158.5	160.35	163.25	157.45	155.6	154.55	151.65	156.65
LEADMINI 31JAN2018	BULLISH	159.85	160.9	163.15	158.65	157.6	156.4	154.15	158.8
LEADMINI 29DEC2017	BEARISH	159.03	160.81	163.56	158.06	156.28	155.31	152.56	157.25
LEADMINI 30NOV2017	BEARISH	158.48	160.31	163.16	157.46	155.63	154.61	151.76	156.65
MENTHAOIL 31JAN2018	BEARISH	1683.43	1718.86	1775.46	1662.26	1626.83	1605.66	1549.06	1648
MENTHAOIL 29DEC2017	BEARISH	1673.66	1708.63	1765.23	1652.03	1617.06	1595.43	1538.83	1638.7
MENTHAOIL 30NOV2017	BEARISH	1662.6	1699.4	1760.6	1638.2	1601.4	1577	1515.8	1625.8
NATURALGAS 25JAN2018	BEARISH	210.8	212.6	215.5	209.7	207.9	206.8	203.9	209
NATURALGAS 26DEC2017	BEARISH	209.7	211.8	215.4	208.2	206.1	204.6	201	207.6
NATURALGAS 27NOV2017	BEARISH	202.73	205.06	209.06	201.06	198.73	197.06	193.06	200.4
NICKEL 31JAN2018	BEARISH	759.13	763.46	771.26	755.66	751.33	747.86	740.06	754.8
NICKEL 29DEC2017	BEARISH	763.33	780.46	807.86	753.06	735.93	725.66	698.26	746.2
NICKEL 30NOV2017	BEARISH	758.7	776.3	804.5	748.1	730.5	719.9	691.7	741.1
NICKELM 31JAN2018	BEARISH	771.1	786.4	813.1	759.7	744.4	733	706.3	755.8
NICKELM 29DEC2017	BEARISH	763.33	780.46	807.96	752.96	735.83	725.46	697.96	746.2
NICKELM 30NOV2017	BEARISH	758.63	776.26	804.66	747.86	730.23	719.46	691.06	741
SILVER 05MAR2018	BULLISH	40568.7	40659.3	40889.3	40429.33	40338.7	40199.3	39969.3	40478
SILVER 05DEC2017	BULLISH	39911.7	40024.3	40301.3	39747.33	39634.7	39470.3	39193.3	39799
SILVERM 30APR2018	BEARISH	40991.3	41055.7	41175.7	40935.66	40871.3	40815.7	40695.7	40927
SILVERM 28FEB2018	BULLISH	40571.3	40646.7	40843.7	40449.66	40374.3	40252.7	40055.7	40496
SILVERM 30NOV2017	BULLISH	39904.7	39996.3	40234.3	39758.33	39666.7	39520.3	39282.3	39813

Registered Office:#15-8-1/2/3, 2nd floor, Sllddiamber Bazar, Hyderabad - 500012, Telangana State. INDIA.

Corporate Office: #3-6-196/197, Pnme Plaza, 2nd floor, flat No. 204 A & B, H1mayath Nagar, Hyderabad - 500029, Telangana State.INDIA.

Ph:+91-40-64645000,Fax: +91-40-23262166,E-mail:support@basanonline.com,Website:www.basanonline.com



BASAN COMMODITY LIMITED

DAILY COMMODITY REPORT 17th Nov 2017

COMMODITIES	TREND	R1	R2	R3	PIVOT POINT	S1	S2	S3	Close
SILVERMIC 30APR2018	BULLISH	41039.7	41088.3	41225.3	40951.33	40902.7	40814.3	40677.3	40991
SILVERMIC 28FEB2018	BULLISH	40567	40638	40823	40453	40382	40268	40083	40496
SILVERMIC 30NOV2017	BULLISH	39904	39996	40234	39758	39666	39520	39282	39812
ZINC 29DEC2017	BEARISH	207.35	208.95	211.55	206.35	204.75	203.75	201.15	205.75
ZINC 30NOV2017	BEARISH	208.26	210.08	213.03	207.13	205.31	204.18	201.23	206.45
ZINCMINI 31JAN2018	BULLISH	207.66	208.58	210.58	206.58	205.66	204.58	202.58	206.75
ZINCMINI 29DEC2017	BEARISH	207.36	208.98	211.63	206.33	204.71	203.68	201.03	205.75
ZINCMINI 30NOV2017	BEARISH	208.25	210	212.85	207.15	205.4	204.3	201.45	206.5

Registered Office:#15-8-1/2/3, 2nd floor, Sliddiamber Bazar, Hyderabad - 500012, Telangana State. INDIA.

Corporate Office: #3-6-196/197, Pnme Plaza, 2nd floor, flat No. 204 A & B, H1mayath Nagar, Hyderabad - 500029, Telangana State.INDIA.

Ph:+91-40-64645000,Fax: +91-40-23262166,E-mail:support@basanonline.com,Website:www.basanonline.com