

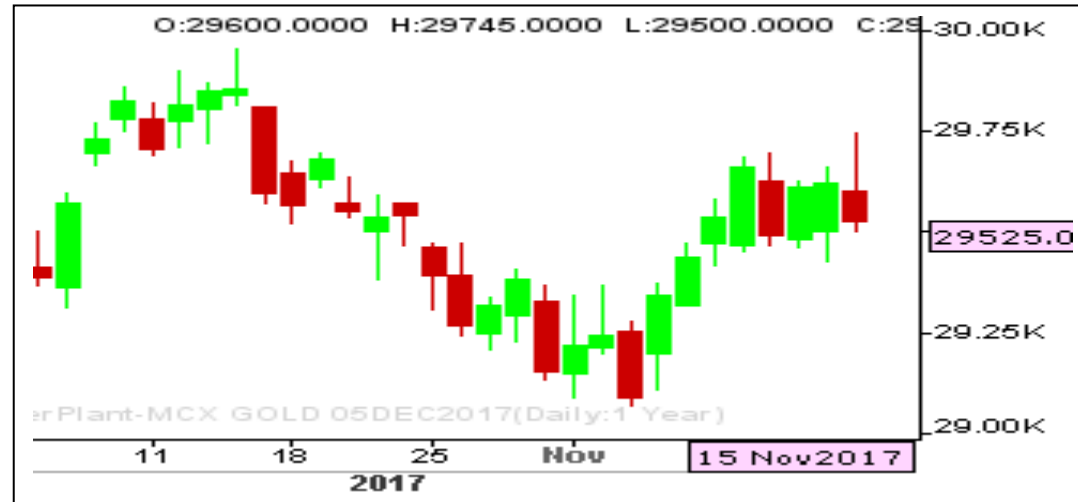
**GOLD WEAK**

**RANGE : 29800 - 29400**

**What Chart Says :**

Dec Gold price has witnessed buying interest from beginning of the session by posting a high of 29745 levels but in the final session prices has witnessed selling interest and finally settled at 29525 levels.

Wednesday's close is indicating some weakness in the markets. However, today's close could give clear picture. If prices manages to sustain below 29450 levels today then trend could shift to bearish again. Awaiting for clear confirmation.



**SILVER NEGATIVE**

**RANGE : 40150 - 39400**

**What Chart Says :**

Dec Silver has settled finally on weak note at 39711 levels, by posting a high of 40080 levels.

Till price manages to trade below 40150 levels our bias remains mixed. For the past one month prices has been strongly holding well below 40150 levels. To attract any positive momentum prices must breach these levels, failure of which could take back prices towards 39000 levels.



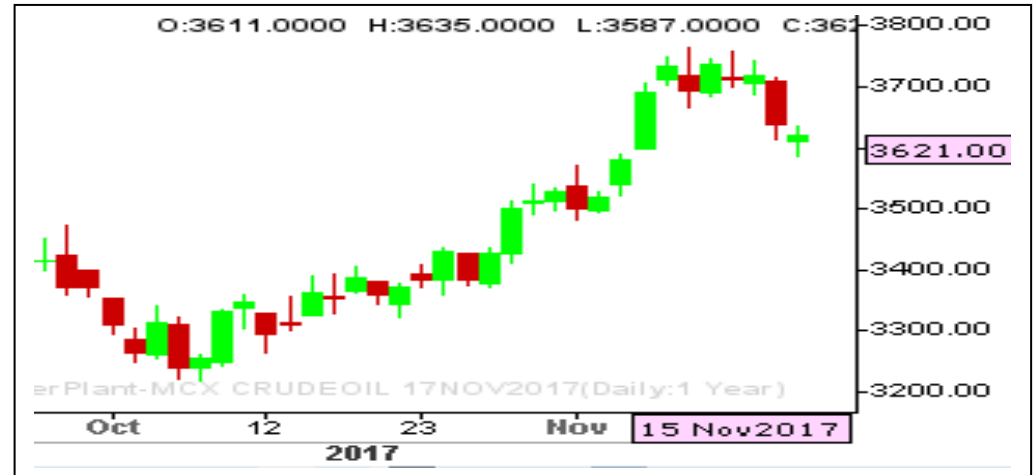
**CRUDE OIL MIXED**

**RANGE : 3570 - 3660**

**What Chart Says :**

Nov Crude Oil has witnessed selling interest on Wednesday and finally settled at 3621 by posting a low of 3587 levels.

For the day trend remains weak and is expected to trade sideways to lower towards 3600 followed by 3570 levels. To attract any buying interest prices must breach 3680 resistance levels.



**ZINC MIXED**

**RANGE : 205.00 - 210.00**

**What Chart Says :**

Nov Zinc has witnessed selling interest and finally ended its day at 208, gained from the day's low of 204.50 levels.

For the day trend remains weak and is likely to extend towards 205.50 levels followed by 202.50 levels. The current corrective declines could extend for the time being, targeting 200 levels for the medium term. Any strong close above 213 can change our bias.



**Sell on rallies with stop above 214.50 with the price objective of 204 followed by 200 levels.**

Registered Office:#15-8-1/2/3, 2nd floor, Sliddiamber Bazar, Hyderabad - 500012, Telangana State. INDIA.

Corporate Office: #3-6-196/197, Pnme Plaza, 2nd floor, flat No. 204 A & B, H1mayath Nagar, Hyderabad - 500029, Telangana State.INDIA.

Ph:+91-40-64645000,Fax: +91-40-23262166,E-mail:support@basanonline.com,Website:[www.basanonline.com](http://www.basanonline.com)



# BASAN COMMODITY LIMITED

DAILY COMMODITY REPORT 16thNov 2017

COMMODITIES	TREND	R1	R2	R3	PIVOT POINT	S1	S2	S3	Close
ALUMINI 31JAN2018	BEARISH	138.28	139.41	141.51	137.31	136.18	135.21	133.11	137.15
ALUMINI 29DEC2017	BULLISH	138.6	139.65	142.25	137.05	136	134.45	131.85	137.55
ALUMINI 30NOV2017	BULLISH	138.16	139.38	142.33	136.43	135.21	133.48	130.53	136.95
ALUMINIUM 31JAN2018	BULLISH	138.4	138.7	139.3	138.1	137.8	137.5	136.9	138.1
ALUMINIUM 29DEC2017	BULLISH	138.56	139.58	142.08	137.08	136.06	134.58	132.08	137.55
ALUMINIUM 30NOV2017	BULLISH	138.18	139.41	142.41	136.41	135.18	133.41	130.41	136.95
CARDAMOM 15JAN2018	BEARISH	1011.93	1019.16	1032.86	1005.46	998.23	991.76	978.06	1004.7
CARDAMOM 15DEC2017	BULLISH	1002.8	1014.1	1042.8	985.4	974.1	956.7	928	991.5
COPPER 30APR2018	BEARISH	450.6	451.85	454.25	449.45	448.2	447.05	444.65	449.35
COPPER 28FEB2018	BULLISH	449.06	450.83	454.93	446.73	444.96	442.63	438.53	447.3
COPPER 30NOV2017	BULLISH	443.48	445.86	451.61	440.11	437.73	434.36	428.61	441.1
COPPERM 30APR2018	BULLISH	452.6	454	457.3	450.7	449.3	447.4	444.1	451.2
COPPERM 28FEB2018	BULLISH	449.03	450.86	455.06	446.66	444.83	442.46	438.26	447.2
COPPERM 30NOV2017	BULLISH	442.93	444.76	448.96	440.56	438.73	436.36	432.16	441.1
COTTON 31JAN2018	BEARISH	18410	18480	18590	18370	18300	18260	18150	18340
COTTON 29DEC2017	BEARISH	18350	18420	18540	18300	18230	18180	18060	18280
COTTON 30NOV2017	BEARISH	18366.7	18433.3	18553.3	18313.33	18246.7	18193.3	18073.3	18300
CPO 31JAN2018	BEARISH	568.13	572.16	578.36	565.96	561.93	559.76	553.56	564.1
CPO 29DEC2017	BEARISH	565.86	571.23	579.43	563.03	557.66	554.83	546.63	560.5
CPO 30NOV2017	BEARISH	560.66	566.23	574.83	557.63	552.06	549.03	540.43	555.1
CRUDEOIL 19MAR2018	BULLISH	3697	3697	3697	3697	3697	3697	3697	3697
CRUDEOIL 16FEB2018	BULLISH	3675	3683	3699	3667	3659	3651	3635	3667
CRUDEOIL 19JAN2018	BULLISH	3682.66	3702.33	3749.33	3655.33	3635.66	3608.33	3561.33	3663
CRUDEOIL 18DEC2017	BULLISH	3664	3683	3729	3637	3618	3591	3545	3645
CRUDEOIL 17NOV2017	BULLISH	3641.66	3662.33	3710.33	3614.33	3593.66	3566.33	3518.33	3621
CRUDEOILM 19APR2018	BEARISH	3719.66	3734.33	3759.33	3709.33	3694.66	3684.33	3659.33	3705
CRUDEOILM 16FEB2018	BEARISH	3698	3721	3762	3680	3657	3639	3598	3675
CRUDEOILM 19JAN2018	BULLISH	3676	3692	3730	3654	3638	3616	3578	3660
CRUDEOILM 18DEC2017	BULLISH	3662.33	3680.66	3725.66	3635.66	3617.33	3590.66	3545.66	3644
CRUDEOILM 17NOV2017	BULLISH	3641	3661	3708	3614	3594	3567	3520	3621
GOLD 05JUN2018	BULLISH	29890	29890	29890	29890	29890	29890	29890	29890
GOLD 05APR2018	BEARISH	29839.3	29925.7	30074.7	29776.66	29690.3	29627.7	29478.7	29753
GOLD 05FEB2018	BEARISH	29812.7	29955.3	30174.3	29736.33	29593.7	29517.3	29298.3	29670
GOLD 05DEC2017	BEARISH	29680	29835	30080	29590	29435	29345	29100	29525
GOLD 28NOV2017	BULLISH	90.66	117.33	171.33	63.33	36.66	9.33	-44.66	64
GOLD 28NOV2017	BEARISH	69.66	86.33	115.33	57.33	40.66	28.33	-0.66	53
GOLD 28NOV2017	BEARISH	679.83	757.66	903.16	612.16	534.33	466.66	321.16	602

Registered Office:#15-8-1/2/3, 2nd floor, Slddiamber Bazar, Hyderabad - 500012, Telangana State. INDIA.

Corporate Office: #3-6-196/197, Pnme Plaza, 2nd floor, flat No. 204 A & B, H1mayath Nagar, Hyderabad - 500029, Telangana State.INDIA.

Ph:+91-40-64645000,Fax: +91-40-23262166,E-mail:support@basanonline.com,Website:[www.basanonline.com](http://www.basanonline.com)



# BASAN COMMODITY LIMITED

DAILY COMMODITY REPORT 16thNov 2017

COMMODITIES	TREND	R1	R2	R3	PIVOT POINT	S1	S2	S3	Close
GOLD 28NOV2017	BEARISH	63	71	86	56	48	41	26	55
GOLD 28NOV2017	BULLISH	495	495	495	495	495	495	495	495
GOLD 28NOV2017	BULLISH	400	400	400	400	400	400	400	400
GOLD 28NOV2017	BULLISH	37	41	50	32	28	23	14	33
GOLD 28NOV2017	BEARISH	353.33	436.16	595.16	277.16	194.33	118.16	-40.83	270.5
GOLD 28NOV2017	BEARISH	264	275.5	295.5	255.5	244	235.5	215.5	252.5
GOLD 28NOV2017	BEARISH	257	343.5	503.5	183.5	97	23.5	-136.5	170.5
GOLD 28NOV2017	BEARISH	245.33	282.66	352.66	212.66	175.33	142.66	72.66	208
GOLD 28NOV2017	BULLISH	213.16	228.83	260.33	197.33	181.66	165.83	134.33	197.5
GOLD 28NOV2017	BULLISH	21	21.5	22.5	20.5	20	19.5	18.5	20.5
GOLD 28NOV2017	BEARISH	194.33	223.16	274.16	172.16	143.33	121.16	70.16	165.5
GOLD 28NOV2017	BEARISH	163.83	196.66	256.16	137.16	104.33	77.66	18.16	131
GOLD 28NOV2017	BULLISH	162.16	183.83	236.33	131.33	109.66	78.83	26.33	140.5
GOLD 28NOV2017	BEARISH	115.33	142.66	187.66	97.66	70.33	52.66	7.66	88
GOLD 28NOV2017	BEARISH	105.66	120.33	145.33	95.33	80.66	70.33	45.33	91
GOLDGUINEA 29DEC2017	BULLISH	23908	24014	24264	23764	23658	23514	23264	23802
GOLDGUINEA 30NOV2017	BEARISH	23796.7	23848.3	23937.3	23759.33	23707.7	23670.3	23581.3	23745
GOLDM 05FEB2018	BEARISH	29813	29910	30066	29754	29657	29598	29442	29716
GOLDM 05JAN2018	BEARISH	29764.3	29891.7	30090.7	29692.66	29565.3	29493.7	29294.7	29637
GOLDM 05DEC2017	BEARISH	29674.7	29821.3	30049.3	29593.33	29446.7	29365.3	29137.3	29528
GOLDPETAL 31JAN2018	BULLISH	2987.33	2989.66	2995.66	2983.66	2981.33	2977.66	2971.66	2985
GOLDPETAL 29DEC2017	BEARISH	2973.66	2980.33	2991.33	2969.33	2962.66	2958.33	2947.33	2967
GOLDPETAL 30NOV2017	BEARISH	2964.66	2971.33	2982.33	2960.33	2953.66	2949.33	2938.33	2958
LEAD 28FEB2018	BULLISH	160.8	160.8	160.8	160.8	160.8	160.8	160.8	160.8
LEAD 29DEC2017	BEARISH	161.11	163.18	166.68	159.68	157.61	156.18	152.68	159.05
LEAD 30NOV2017	BEARISH	160.7	162.95	166.8	159.1	156.85	155.25	151.4	158.45
LEADMINI 31JAN2018	BEARISH	161.71	163.78	167.28	160.28	158.21	156.78	153.28	159.65
LEADMINI 29DEC2017	BEARISH	161.13	163.16	166.61	159.71	157.68	156.26	152.81	159.1
LEADMINI 30NOV2017	BEARISH	160.51	162.58	166.13	159.03	156.96	155.48	151.93	158.45
MENTHAOIL 31JAN2018	BEARISH	1717.13	1758.56	1833.56	1683.56	1642.13	1608.56	1533.56	1675.7
MENTHAOIL 29DEC2017	BEARISH	1709.56	1751.73	1829.63	1673.83	1631.66	1595.93	1518.03	1667.4
MENTHAOIL 30NOV2017	BEARISH	1697.33	1739.26	1816.86	1661.66	1619.73	1584.06	1506.46	1655.4
NATURALGAS 25JAN2018	BEARISH	212.73	216.26	221.66	210.86	207.33	205.46	200.06	209.2
NATURALGAS 26DEC2017	BEARISH	211.9	215.4	221	209.8	206.3	204.2	198.6	208.4
NATURALGAS 27NOV2017	BEARISH	204.86	208.73	214.83	202.63	198.76	196.53	190.43	201
NICKEL 31JAN2018	BEARISH	774.43	784.16	801.26	767.06	757.33	749.96	732.86	764.7
NICKEL 29DEC2017	BULLISH	775.06	785.63	807.53	763.73	753.16	741.83	719.93	764.5

Registered Office:#15-8-1/2/3, 2nd floor, Sllddiamber Bazar, Hyderabad - 500012, Telangana State. INDIA.

Corporate Office: #3-6-196/197, Pnme Plaza, 2nd floor, flat No. 204 A & B, H1mayath Nagar, Hyderabad - 500029, Telangana State.INDIA.

Ph:+91-40-64645000,Fax: +91-40-23262166,E-mail:support@basanonline.com,Website:[www.basanonline.com](http://www.basanonline.com)



# BASAN COMMODITY LIMITED

DAILY COMMODITY REPORT 16thNov 2017

COMMODITIES	TREND	R1	R2	R3	PIVOT POINT	S1	S2	S3	Close
NICKEL 30NOV2017	BULLISH	770.7	781.4	803.7	759.1	748.4	736.8	714.5	760
NICKELM 31JAN2018	BULLISH	779.6	788.5	807.2	769.8	760.9	751.1	732.4	770.7
NICKELM 29DEC2017	BULLISH	775.46	786.23	808.63	763.83	753.06	741.43	719.03	764.7
NICKELM 30NOV2017	BULLISH	771	781.9	804.7	759.1	748.2	736.3	713.5	760.1
SILVER 05SEP2018	BULLISH	42129.3	42212.7	42398.7	42026.66	41943.3	41840.7	41654.7	42046
SILVER 04MAY2018	BULLISH	41290	41467	41821	41113	40936	40759	40405	41113
SILVER 05MAR2018	BEARISH	40663	40935	41366	40504	40232	40073	39642	40391
SILVER 05DEC2017	BEARISH	39977.3	40243.7	40673.7	39813.66	39547.3	39383.7	38953.7	39711
SILVERM 29JUN2018	BULLISH	41742.7	41817.3	42009.3	41625.33	41550.7	41433.3	41241.3	41668
SILVERM 30APR2018	BULLISH	41125.3	41212.7	41387.7	41037.66	40950.3	40862.7	40687.7	41038
SILVERM 28FEB2018	BEARISH	40682	40944	41367	40521	40259	40098	39675	40420
SILVERM 30NOV2017	BEARISH	39989.3	40249.7	40673.7	39825.66	39565.3	39401.7	38977.7	39729
SILVERMIC 30APR2018	BEARISH	41180	41382	41711	41053	40851	40724	40395	40978
SILVERMIC 28FEB2018	BEARISH	40684.7	40945.3	41364.3	40526.33	40265.7	40107.3	39688.3	40424
SILVERMIC 30NOV2017	BEARISH	39989.3	40249.7	40669.7	39829.66	39569.3	39409.7	38989.7	39729
ZINC 28FEB2018	BULLISH	206.01	206.78	208.33	205.23	204.46	203.68	202.13	205.25
ZINC 31JAN2018	BULLISH	206.21	206.63	207.63	205.63	205.21	204.63	203.63	205.8
ZINC 29DEC2017	BULLISH	208.38	209.66	213.21	206.11	204.83	202.56	199.01	207.1
ZINC 30NOV2017	BULLISH	209.5	211	215	207	205.5	203	199	208
ZINCMINI 31JAN2018	BEARISH	205.66	207.13	209.63	204.63	203.16	202.13	199.63	204.2
ZINCMINI 29DEC2017	BULLISH	208.38	209.66	213.21	206.11	204.83	202.56	199.01	207.1
ZINCMINI 30NOV2017	BULLISH	209.46	210.93	214.88	206.98	205.51	203.03	199.08	208

Registered Office:#15-8-1/2/3, 2nd floor, Slddiamber Bazar, Hyderabad - 500012, Telangana State. INDIA.

Corporate Office: #3-6-196/197, Pnme Plaza, 2nd floor, flat No. 204 A & B, H1mayath Nagar, Hyderabad - 500029, Telangana State.INDIA.

Ph:+91-40-64645000,Fax: +91-40-23262166,E-mail:support@basanonline.com,Website:[www.basanonline.com](http://www.basanonline.com)