



BASAN COMMODITY LIMITED

DAILY COMMODITY REPORT 7th Nov 2017

GOLD MIXED

RANGE : 29250 - 29500

What Chart Says :

Dec Gold price has witnessed buying interest on Monday in the evening session by posting a low of 29109 levels and finally settled on some positive note at 29344 levels.

Overall trend remains weak. The current short term corrective positive momentum could cap at 29500 levels. Till price manages to trade below 29500 our long term trend remains weak. For the day trend remains mixed and is likely to trade sideways between 29100 - 29500 levels.



SILVER SIDEWAYS

RANGE : 39700 - 40000

What Chart Says :

Dec Silver rallied on Monday from days low of 39124 levels and finally settled at 39895 levels.

Overall long term trend remains weak. but current positive sentiment could continue for the time being and any sustained holding above 40000 can induce more buying interest towards 40450 levels. Failure of which can put some pressure on prices again.



Registered Office:#15-8-1/2/3, 2nd floor, Sliddiamber Bazar, Hyderabad - 500012, Telangana State. INDIA.

Corporate Office: #3-6-196/197, Pnme Plaza, 2nd floor, flat No. 204 A & B, H1mayath Nagar, Hyderabad - 500029, Telangana State.INDIA.

Ph:+91-40-64645000,Fax: +91-40-23262166,E-mail:support@basanonline.com,Website:www.basanonline.com



BASAN COMMODITY LIMITED

DAILY COMMODITY REPORT 7th Nov 2017

CRUDE OIL STRONG

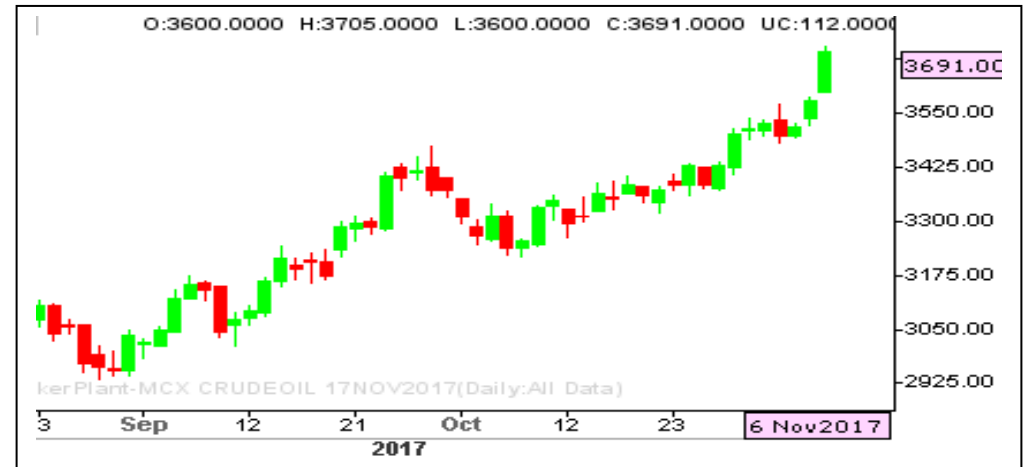
RANGE : 3650 - 3780

What Chart Says :

Nov Crude Oil has rallied as expected towards 3705 levels and finally settled at 3691 levels.

For the day trend remains firm and is expected to trade sideways to higher towards 3750 followed by 3800 levels. Any strong break and close below 3600 can change our bullish bias.

Initial targets attained (3620) for longs initiated at 3500 levels and hold remaining with breakeven stops for the price objective of 3740 levels.



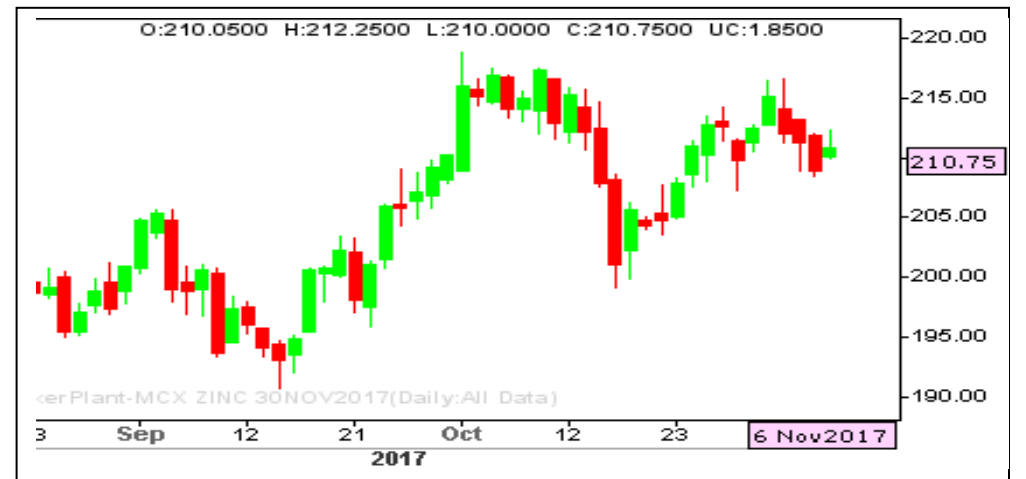
ZINC MIXED

RANGE : 205.00 - 212.00

What Chart Says :

Nov Zinc has witnessed selling pressure from day's high of 212.25 levels, finally settled on weak note at 210.75.

Today prices are likely to trade sideways to lower towards 206 levels followed by 204 levels. Any sustained holding above 213 only can push prices higher towards 220 levels but chances are less.



Registered Office:#15-8-1/2/3, 2nd floor, Sliddiamber Bazar, Hyderabad - 500012, Telangana State. INDIA.

Corporate Office: #3-6-196/197, Pnme Plaza, 2nd floor, flat No. 204 A & B, H1mayath Nagar, Hyderabad - 500029, Telangana State.INDIA.

Ph:+91-40-64645000,Fax: +91-40-23262166,E-mail:support@basanonline.com,Website:www.basanonline.com



BASAN COMMODITY LIMITED

DAILY COMMODITY REPORT 7th Nov 2017

COMMODITIES	TREND	R1	R2	R3	PIVOT POINT	S1	S2	S3	Close
ALUMINI 31JAN2018	BULLISH	141.86	142.13	142.73	141.53	141.26	140.93	140.33	142
ALUMINI 29DEC2017	BEARISH	141.93	142.51	143.91	141.11	140.53	139.71	138.31	140.25
ALUMINI 30NOV2017	BEARISH	141.55	142.15	143.65	140.65	140.05	139.15	137.65	139.7
ALUMINIUM 29DEC2017	BEARISH	142.01	142.63	144.08	141.18	140.56	139.73	138.28	140.25
ALUMINIUM 30NOV2017	BEARISH	141.55	142.15	143.65	140.65	140.05	139.15	137.65	139.65
CARDAMOM 15JAN2018	BEARISH	955.4	958.7	964.7	952.7	949.4	946.7	940.7	940.6
CARDAMOM 15DEC2017	BEARISH	946	953	972	934	927	915	896	927.6
CARDAMOM 15NOV2017	BEARISH	967.36	978.43	1007.93	948.93	937.86	919.43	889.93	922.2
COPPER 30APR2018	BULLISH	460.23	461.91	465.91	457.91	456.23	453.91	449.91	460.35
COPPER 28FEB2018	BULLISH	455.58	458.86	464.66	453.06	449.78	447.26	441.46	457.05
COPPER 30NOV2017	BULLISH	449.43	453.06	459.26	446.86	443.23	440.66	434.46	450.95
COPPERM 30APR2018	BULLISH	458.66	460.88	464.98	456.78	454.56	452.68	448.58	460.5
COPPERM 28FEB2018	BULLISH	455.31	458.53	464.08	452.98	449.76	447.43	441.88	456.95
COPPERM 30NOV2017	BULLISH	449.35	452.9	458.95	446.85	443.3	440.8	434.75	450.95
COTTON 31JAN2018	BEARISH	18363.3	18456.7	18606.7	18306.66	18213.3	18156.7	18006.7	18250
COTTON 29DEC2017	BEARISH	18326.7	18433.3	18613.3	18253.33	18146.7	18073.3	17893.3	18170
COTTON 30NOV2017	BEARISH	18420	18530	18730	18330	18220	18130	17930	18250
CPO 31JAN2018	BEARISH	559.83	563.46	571.56	555.36	551.73	547.26	539.16	552.5
CPO 29DEC2017	BEARISH	558.53	562.26	570.26	554.26	550.53	546.26	538.26	550.9
CPO 30NOV2017	BEARISH	557.83	561.46	569.26	553.66	550.03	545.86	538.06	550.6
CRUDEOIL 19APR2018	BULLISH	3639	3639	3639	3639	3639	3639	3639	3715
CRUDEOIL 19MAR2018	BULLISH	3647	3664	3696	3632	3615	3600	3568	3697
CRUDEOIL 19JAN2018	BULLISH	3635.33	3656.66	3706.66	3606.66	3585.33	3556.66	3506.66	3728
CRUDEOIL 18DEC2017	BULLISH	3626	3652	3718	3586	3560	3520	3454	3713
CRUDEOIL 17NOV2017	BULLISH	3604.66	3630.33	3697.33	3563.33	3537.66	3496.33	3429.33	3691
CRUDEOILM 19APR2018	BULLISH	3660.66	3711.33	3819.33	3603.33	3552.66	3495.33	3387.33	3702
CRUDEOILM 19MAR2018	BULLISH	3644	3644	3644	3644	3644	3644	3644	3644
CRUDEOILM 16FEB2018	BULLISH	3647.33	3668.66	3718.66	3618.66	3597.33	3568.66	3518.66	3707
CRUDEOILM 19JAN2018	BULLISH	3637.66	3659.33	3715.33	3603.33	3581.66	3547.33	3491.33	3736
CRUDEOILM 18DEC2017	BULLISH	3625.33	3650.66	3715.66	3585.66	3560.33	3520.66	3455.66	3714
CRUDEOILM 17NOV2017	BULLISH	3605.33	3632.66	3701.66	3563.66	3536.33	3494.66	3425.66	3691
GOLD 05OCT2018	BEARISH	29872	30026	30316	29736	29582	29446	29156	29718
GOLD 05APR2018	BULLISH	29421	29421	29421	29421	29421	29421	29421	29421
GOLD 05FEB2018	BULLISH	29315.3	29439.7	29640.7	29238.66	29114.3	29037.7	28836.7	29455
GOLD 05DEC2017	BULLISH	29222.3	29356.7	29567.7	29145.66	29011.3	28934.7	28723.7	29344
GOLD 28NOV2017	BULLISH	81.5	104.5	139.5	69.5	46.5	34.5	-0.5	880.5
GOLD 28NOV2017	BULLISH	730	739	758	720	711	701	682	880.5

Registered Office:#15-8-1/2/3, 2nd floor, Sliddiamber Bazar, Hyderabad - 500012, Telangana State. INDIA.

Corporate Office: #3-6-196/197, Pnme Plaza, 2nd floor, flat No. 204 A & B, H1mayath Nagar, Hyderabad - 500029, Telangana State.INDIA.

Ph:+91-40-64645000,Fax: +91-40-23262166,E-mail:support@basanonline.com,Website:www.basanonline.com



BASAN COMMODITY LIMITED

DAILY COMMODITY REPORT 7th Nov 2017

COMMODITIES	TREND	R1	R2	R3	PIVOT POINT	S1	S2	S3	Close
GOLD 28NOV2017	BULLISH	71	77	91	63	57	49	35	880.5
GOLD 28NOV2017	BULLISH	57.66	69.33	88.83	49.83	38.16	30.33	10.83	880.5
GOLD 28NOV2017	BULLISH	543	543	543	543	543	543	543	880.5
GOLD 28NOV2017	BULLISH	489	544.5	645	444	388.5	343.5	243	880.5
GOLD 28NOV2017	BULLISH	359.83	474.66	652.16	297.16	182.33	119.66	-57.83	880.5
GOLD 28NOV2017	BULLISH	35	35	35	35	35	35	35	880.5
GOLD 28NOV2017	BULLISH	34.16	35.83	39.33	32.33	30.66	28.83	25.33	880.5
GOLD 28NOV2017	BULLISH	333	333	333	333	333	333	333	880.5
GOLD 28NOV2017	BULLISH	327.5	356	410.5	301.5	273	247	192.5	880.5
GOLD 28NOV2017	BULLISH	308.66	387.83	570.33	205.33	126.16	22.83	-159.66	880.5
GOLD 28NOV2017	BULLISH	245.66	323.33	451.33	195.33	117.66	67.33	-60.66	880.5
GOLD 28NOV2017	BULLISH	241	270.5	325.5	215.5	186	160.5	105.5	880.5
GOLD 28NOV2017	BULLISH	198.66	266.33	373.33	159.33	91.66	52.33	-54.66	880.5
GOLD 28NOV2017	BULLISH	177.33	224.66	300.66	148.66	101.33	72.66	-3.33	880.5
GOLD 28NOV2017	BULLISH	173.33	190.66	234.66	146.66	129.33	102.66	58.66	880.5
GOLD 28NOV2017	BULLISH	148.5	148.5	148.5	148.5	148.5	148.5	148.5	880.5
GOLD 28NOV2017	BULLISH	148.33	171.66	216.66	126.66	103.33	81.66	36.66	880.5
GOLD 28NOV2017	BULLISH	119	144.5	194.5	94.5	69	44.5	-5.5	880.5
GOLD 28NOV2017	BULLISH	101.66	104.83	111.33	98.33	95.16	91.83	85.33	880.5
GOLDGUINEA 29DEC2017	BULLISH	23690.3	23752.7	23857.7	23647.66	23585.3	23542.7	23437.7	23680
GOLDGUINEA 30NOV2017	BULLISH	23590.3	23684.7	23843.7	23525.66	23431.3	23366.7	23207.7	23643
GOLDM 05JAN2018	BULLISH	29320	29446	29648	29244	29118	29042	28840	29416
GOLDM 05DEC2017	BULLISH	29255	29392	29606	29178	29041	28964	28750	29363
GOLDPETAL 31JAN2018	BULLISH	2963	2966	2972	2960	2957	2954	2948	2960
GOLDPETAL 29DEC2017	BULLISH	2959.33	2972.66	2993.66	2951.66	2938.33	2930.66	2909.66	2958
GOLDPETAL 30NOV2017	BULLISH	2943.33	2950.66	2962.66	2938.66	2931.33	2926.66	2914.66	2947
LEAD 31JAN2018	BULLISH	159.51	159.63	159.88	159.38	159.26	159.13	158.88	160.9
LEAD 29DEC2017	BULLISH	160.88	161.61	163.46	159.76	159.03	157.91	156.06	162.4
LEAD 30NOV2017	BULLISH	160.71	161.53	163.63	159.43	158.61	157.33	155.23	162
LEADMINI 29DEC2017	BULLISH	160.91	161.68	163.63	159.73	158.96	157.78	155.83	162.4
LEADMINI 30NOV2017	BULLISH	160.75	161.6	163.75	159.45	158.6	157.3	155.15	162.05
MENTHAOIL 31JAN2018	BULLISH	1513.9	1529.7	1572.4	1487	1471.2	1444.3	1401.6	1555.1
MENTHAOIL 29DEC2017	BULLISH	1501.53	1518.86	1564.96	1472.76	1455.43	1426.66	1380.56	1543.5
MENTHAOIL 30NOV2017	BULLISH	1487.2	1507.1	1560.1	1454.1	1434.2	1401.1	1348.1	1525.9
NATURALGAS 25JAN2018	BULLISH	204.06	205.23	208.13	202.33	201.16	199.43	196.53	210.1
NATURALGAS 26DEC2017	BULLISH	203.7	205.1	209.2	201	199.6	196.9	192.8	209.1
NATURALGAS 27NOV2017	BULLISH	195.86	197.53	202.23	192.83	191.16	188.13	183.43	202

Registered Office:#15-8-1/2/3, 2nd floor, Slddiamber Bazar, Hyderabad - 500012, Telangana State. INDIA.

Corporate Office: #3-6-196/197, Pnme Plaza, 2nd floor, flat No. 204 A & B, H1mayath Nagar, Hyderabad - 500029, Telangana State.INDIA.

Ph:+91-40-64645000,Fax: +91-40-23262166,E-mail:support@basanonline.com,Website:www.basanonline.com



BASAN COMMODITY LIMITED

DAILY COMMODITY REPORT 7th Nov 2017

COMMODITIES	TREND	R1	R2	R3	PIVOT POINT	S1	S2	S3	Close
NICKEL 28FEB2018	BULLISH	827.2	827.9	829.3	826.5	825.8	825.1	823.7	848.2
NICKEL 31JAN2018	BULLISH	830.63	834.26	842.16	826.36	822.73	818.46	810.56	843.2
NICKEL 29DEC2017	BULLISH	833.83	841.76	859.66	823.86	815.93	805.96	788.06	842.2
NICKEL 30NOV2017	BULLISH	829.56	839.03	860.53	817.53	808.06	796.03	774.53	837.1
NICKELM 31JAN2018	BULLISH	830	832.5	837.5	827.5	825	822.5	817.5	843.6
NICKELM 29DEC2017	BULLISH	831.83	840.76	859.26	822.26	813.33	803.76	785.26	841.9
NICKELM 30NOV2017	BULLISH	828.6	837	855.6	818.4	810	799.8	781.2	837
PEPPER 20NOV2017	BULLISH	42466.7	42833.3	43533.3	42133.33	41766.7	41433.3	40733.3	42200
SILVER 05SEP2018	BEARISH	41986	41986	41986	41986	41986	41986	41986	41791
SILVER 05JUL2018	BEARISH	41009	41009	41009	41009	41009	41009	41009	40925
SILVER 04MAY2018	BULLISH	40314	40381	40505	40257	40190	40133	40009	40585
SILVER 05MAR2018	BULLISH	40171	40646	41386	39906	39431	39166	38426	40534
SILVER 05DEC2017	BULLISH	39560	40072	40876	39268	38756	38464	37660	39895
SILVERM 29JUN2018	BULLISH	41099	41099	41099	41099	41099	41099	41099	41099
SILVERM 30APR2018	BULLISH	40626.7	40948.3	41468.3	40428.33	40106.7	39908.3	39388.3	40824
SILVERM 28FEB2018	BULLISH	40188.7	40655.3	41388.3	39922.33	39455.7	39189.3	38456.3	40544
SILVERM 30NOV2017	BULLISH	39560	40054	40822	39286	38792	38518	37750	39910
SILVERMIC 30APR2018	BULLISH	40675.7	41047.3	41629.3	40465.33	40093.7	39883.3	39301.3	41018
SILVERMIC 28FEB2018	BULLISH	40165.3	40607.7	41282.7	39932.66	39490.3	39257.7	38582.7	40542
SILVERMIC 30NOV2017	BULLISH	39563.3	40056.7	40826.7	39286.66	38793.3	38516.7	37746.7	39905
ZINC 29DEC2017	BULLISH	210.58	212.56	215.66	209.46	207.48	206.36	203.26	210.15
ZINC 30NOV2017	BULLISH	211.13	213.36	216.91	209.81	207.58	206.26	202.71	210.75
ZINCMINI 31JAN2018	BULLISH	208.4	208.4	208.4	208.4	208.4	208.4	208.4	210.35
ZINCMINI 29DEC2017	BULLISH	210.6	212.75	216.05	209.45	207.3	206.15	202.85	210.15
ZINCMINI 30NOV2017	BULLISH	211.18	213.46	217.06	209.86	207.58	206.26	202.66	210.75

Registered Office:#15-8-1/2/3, 2nd floor, Sllddiamber Bazar, Hyderabad - 500012, Telangana State. INDIA.

Corporate Office: #3-6-196/197, Pnme Plaza, 2nd floor, flat No. 204 A & B, H1mayath Nagar, Hyderabad - 500029, Telangana State.INDIA.

Ph:+91-40-64645000,Fax: +91-40-23262166,E-mail:support@basanonline.com,Website:www.basanonline.com