

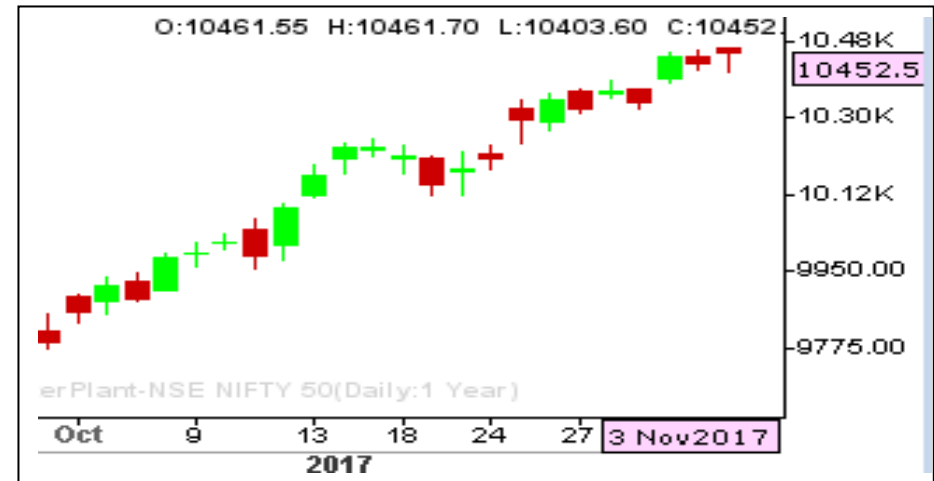
NIFTY POSITIVE

RANGE : 10380 - 10580

What Chart Says :

Spot Nifty opened slightly higher on Friday and traded in very narrow range by posting a low of 10403.60 levels, finally settled at 10452.5 levels.

Overall, Trend remains firm and prices are likely to extend its gains towards 10480 followed by 10520 levels. Till price manages to trade above 10380 levels our bias remains firm. Alternatively any strong break and close below 10380 can change our bullish bias.



BANK NIFTY BULLISH

RANGE : 24500 - 24900

What Chart Says :

Bank Nifty has opened up at 25531.40 levels and posted a new high of 25695.50 levels, finally ended its day at 25650.70 levels.

For today prices are likely to trade sideways to higher towards 25750 followed by 25880 levels as overall trend remains still strong. Any corrective dips could halt at 25370 or worst case 25200 levels.



CASH NH

STOP : 275

TARGET : 340

What Chart Says :

Hold Buys in NH initiated at 303.50 with stop below 275 for the price objective of 340. cmp : 299.95



FUTURES BUY TATA MOTORS

STOP : 430

TARGET : 480

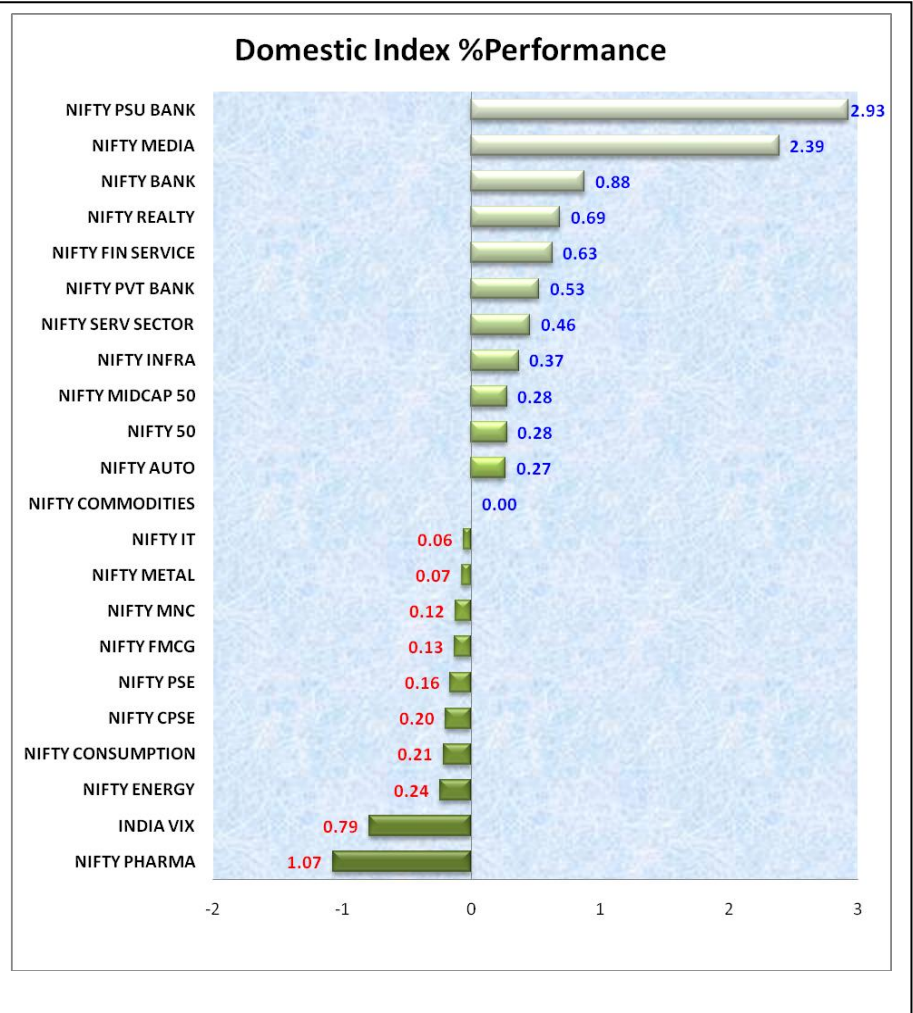
What Chart Says :

TATA Motors is expected to trade sideways to higher towards 465 followed by 480 levels. Till price manages to trade above 430 our bias remains firm.

Buy on dips with stop below 430 for the price objective of 465 and 480 levels.



- Long Build up was found in UJJIVAN, SAIL, ARVIND, JETAIRWAYS, ADANIENT, PNB.
- Short Covering has identified BIOCON, INFIBEAM, ONGC, BHEL, KPIT
- Short built up has seen at HCC, PFC, ANDHRABANK, POWERGRID, RCOM.
- Long liquidation was observed in GLENMARK, BERGERPAINT, CADILAHC, SUNPHARMA, DIVISLAB.



Registered Office:#15-8-1/2/3, 2nd floor, Slddiamber Bazar, Hyderabad - 500012, Telangana State. INDIA.

Corporate Office: #3-6-196/197, Pnme Plaza, 2nd floor, flat No. 204 A & B, H1mayath Nagar, Hyderabad - 500029, Telangana State.INDIA.

Ph:+91-40-64645000,Fax: +91-40-23262166,E-mail:support@basanonline.com,Website:www.basanonline.com



BASAN EQUITY BROKING LIMITED

DAILY EQUITY REPORT 6th Nov 2017

| NIFTY 50 | TREND | R1 | R2 | R3 | PIVOT POINT | S1 | S2 | S3 | Close | Prev.Close | %Chg |
|-------------|---------|---------|---------|---------|-------------|---------|---------|---------|---------|------------|-------|
| ADANI PORTS | BEARISH | 441.93 | 446.62 | 458.12 | 435.12 | 430.43 | 423.62 | 412.12 | 434.85 | 437.25 | -0.55 |
| AMBUJACEM | BULLISH | 283.85 | 288.15 | 294.9 | 281.4 | 277.1 | 274.65 | 267.9 | 282.6 | 279.55 | 1.09 |
| ASIANPAINT | BEARISH | 1184.9 | 1191.4 | 1207.35 | 1175.45 | 1168.95 | 1159.5 | 1143.55 | 1172.45 | 1178.4 | -0.5 |
| AUROPHARMA | BULLISH | 802.1 | 814.95 | 844.85 | 785.05 | 772.2 | 755.15 | 725.25 | 787.95 | 789.25 | -0.16 |
| AXISBANK | BULLISH | 538 | 543.85 | 555.55 | 532.15 | 526.3 | 520.45 | 508.75 | 540.1 | 532.15 | 1.49 |
| BAJAJ-AUTO | BEARISH | 3273.88 | 3306.67 | 3368.12 | 3245.22 | 3212.43 | 3183.77 | 3122.32 | 3217.45 | 3241.1 | -0.73 |
| BAJFINANCE | BULLISH | 1820.73 | 1831.27 | 1851.17 | 1811.37 | 1800.83 | 1791.47 | 1771.57 | 1836.95 | 1810.2 | 1.48 |
| BHARTIARTL | BULLISH | 550.97 | 558.73 | 576.68 | 540.78 | 533.02 | 522.83 | 504.88 | 541.25 | 543.2 | -0.36 |
| BOSCHLTD | BULLISH | 21123.5 | 21257.3 | 21498.3 | 21016.32 | 20882.5 | 20775.3 | 20534.3 | 21047.9 | 20989.75 | 0.28 |
| BPCL | BEARISH | 547.8 | 552.75 | 563.85 | 541.65 | 536.7 | 530.55 | 519.45 | 533.1 | 542.85 | -1.8 |
| CIPLA | BULLISH | 644.15 | 652.3 | 669.95 | 634.65 | 626.5 | 617 | 599.35 | 640.1 | 636 | 0.64 |
| COALINDIA | BEARISH | 294.15 | 297.1 | 304.8 | 289.4 | 286.45 | 281.7 | 274 | 286.55 | 291.2 | -1.6 |
| DRREDDY | BULLISH | 2449.53 | 2487.67 | 2573.47 | 2401.87 | 2363.73 | 2316.07 | 2230.27 | 2419.1 | 2411.4 | 0.32 |
| EICHERMOT | BULLISH | 31355.1 | 31569.9 | 31962.2 | 31177.57 | 30962.8 | 30785.3 | 30393 | 31235.1 | 31140.4 | 0.3 |
| GAIL | BEARISH | 477.27 | 483.58 | 494.28 | 472.88 | 466.57 | 462.18 | 451.48 | 463.85 | 470.95 | -1.51 |
| HCLTECH | BEARISH | 864.88 | 871.87 | 890.72 | 853.02 | 846.03 | 834.17 | 815.32 | 847.15 | 857.9 | -1.25 |
| HDFC | BULLISH | 1773.7 | 1785.15 | 1811.9 | 1758.4 | 1746.95 | 1731.65 | 1704.9 | 1776.3 | 1762.25 | 0.8 |
| HDFCBANK | BULLISH | 1828.95 | 1835.8 | 1848.65 | 1822.95 | 1816.1 | 1810.1 | 1797.25 | 1830.7 | 1822.1 | 0.47 |
| HEROMOTOCO | BEARISH | 3789.37 | 3842.88 | 3934.58 | 3751.18 | 3697.67 | 3659.48 | 3567.78 | 3689.05 | 3735.85 | -1.25 |
| HINDALCO | BEARISH | 275.75 | 280.7 | 290.35 | 271.05 | 266.1 | 261.4 | 251.75 | 268.9 | 270.8 | -0.7 |
| HINDPETRO | BEARISH | 449.8 | 454.25 | 462.05 | 446.45 | 442 | 438.65 | 430.85 | 445.65 | 445.35 | 0.07 |
| HINDUNILVR | BEARISH | 1255.68 | 1269.87 | 1292.87 | 1246.87 | 1232.68 | 1223.87 | 1200.87 | 1239.5 | 1241.5 | -0.16 |
| IBULHSGFIN | BEARISH | 1244.83 | 1260.02 | 1284.37 | 1235.67 | 1220.48 | 1211.32 | 1186.97 | 1219.05 | 1229.65 | -0.86 |
| ICICIBANK | BEARISH | 320.9 | 325.15 | 334.15 | 316.15 | 311.9 | 307.15 | 298.15 | 315.9 | 316.65 | -0.24 |
| INDUSINDBK | BULLISH | 1643.42 | 1659.33 | 1684.83 | 1633.83 | 1617.92 | 1608.33 | 1582.83 | 1674.5 | 1627.5 | 2.89 |
| INFRATEL | BEARISH | 426.37 | 434.08 | 447.18 | 420.98 | 413.27 | 407.88 | 394.78 | 413.75 | 418.65 | -1.17 |
| INFY | BULLISH | 925.93 | 928.97 | 934.97 | 922.97 | 919.93 | 916.97 | 910.97 | 926.65 | 922.9 | 0.41 |
| IOC | BEARISH | 419.32 | 423.68 | 430.73 | 416.63 | 412.27 | 409.58 | 402.53 | 413.25 | 414.95 | -0.41 |
| ITC | BEARISH | 268.63 | 271.62 | 276.27 | 266.97 | 263.98 | 262.32 | 257.67 | 265.4 | 265.65 | -0.09 |
| KOTAKBANK | BEARISH | 1029.47 | 1039.38 | 1055.28 | 1023.48 | 1013.57 | 1007.58 | 991.68 | 1015.5 | 1019.55 | -0.4 |
| LT | BULLISH | 1216.72 | 1222.48 | 1234.73 | 1210.23 | 1204.47 | 1197.98 | 1185.73 | 1235 | 1210.95 | 1.99 |
| LUPIN | BEARISH | 1073.43 | 1085.57 | 1118.57 | 1052.57 | 1040.43 | 1019.57 | 986.57 | 1047.7 | 1061.3 | -1.28 |
| M&M | BEARISH | 1346.15 | 1356.95 | 1375.3 | 1338.6 | 1327.8 | 1320.25 | 1301.9 | 1330.75 | 1335.35 | -0.34 |
| MARUTI | BEARISH | 8266.17 | 8306.53 | 8379.48 | 8233.58 | 8193.22 | 8160.63 | 8087.68 | 8219.4 | 8225.8 | -0.08 |
| NTPC | BULLISH | 181.77 | 183.28 | 187.23 | 179.33 | 177.82 | 175.38 | 171.43 | 181.95 | 180.25 | 0.94 |
| ONGC | BULLISH | 190.95 | 193.9 | 198.55 | 189.25 | 186.3 | 184.6 | 179.95 | 191.85 | 188 | 2.05 |
| POWERGRID | BEARISH | 217.07 | 218.93 | 223.43 | 214.43 | 212.57 | 209.93 | 205.43 | 210.05 | 215.2 | -2.39 |

Registered Office:#15-8-1/2/3, 2nd floor, Sliddiamber Bazar, Hyderabad - 500012, Telangana State. INDIA.

Corporate Office: #3-6-196/197, Pnme Plaza, 2nd floor, flat No. 204 A & B, H1mayath Nagar, Hyderabad - 500029, Telangana State.INDIA.

Ph:+91-40-64645000,Fax: +91-40-23262166,E-mail:support@basanonline.com,Website:www.basanonline.com



BASAN EQUITY BROKING LIMITED

DAILY EQUITY REPORT 6th Nov 2017

| NIFTY 50 | TREND | R1 | R2 | R3 | PIVOT POINT | S1 | S2 | S3 | Close | Prev.Close | %Chg |
|------------|---------|---------|---------|---------|-------------|---------|---------|---------|--------|------------|-------|
| RELIANCE | BEARISH | 953.98 | 961.37 | 973.62 | 949.12 | 941.73 | 936.87 | 924.62 | 945.3 | 946.6 | -0.14 |
| SBIN | BULLISH | 320.48 | 326.62 | 336.22 | 317.02 | 310.88 | 307.42 | 297.82 | 325 | 314.35 | 3.39 |
| SUNPHARMA | BEARISH | 574.62 | 585.78 | 610.43 | 561.13 | 549.97 | 536.48 | 511.83 | 551.25 | 563.45 | -2.17 |
| TATAMOTORS | BULLISH | 440.23 | 445.57 | 456.07 | 435.07 | 429.73 | 424.57 | 414.07 | 447.7 | 434.9 | 2.94 |
| TATASTEEL | BULLISH | 710.87 | 715.63 | 727.08 | 704.18 | 699.42 | 692.73 | 681.28 | 708.9 | 706.1 | 0.4 |
| TCS | BEARISH | 2664.52 | 2702.88 | 2770.13 | 2635.63 | 2597.27 | 2568.38 | 2501.13 | 2620.1 | 2626.15 | -0.23 |
| TECHM | BEARISH | 479.63 | 491.32 | 512.37 | 470.27 | 458.58 | 449.22 | 428.17 | 463.45 | 467.95 | -0.96 |
| ULTRACEMCO | BEARISH | 4437.7 | 4476.25 | 4542.05 | 4410.45 | 4371.9 | 4344.65 | 4278.85 | 4375.1 | 4399.15 | -0.55 |
| UPL | BEARISH | 789.75 | 800.2 | 816.9 | 783.5 | 773.05 | 766.8 | 750.1 | 775.6 | 779.3 | -0.47 |
| WIPRO | BULLISH | 294.98 | 296.72 | 299.47 | 293.97 | 292.23 | 291.22 | 288.47 | 294.55 | 293.25 | 0.44 |
| YESBANK | BULLISH | 323.5 | 326.55 | 332.25 | 320.85 | 317.8 | 315.15 | 309.45 | 325.95 | 320.45 | 1.72 |
| ZEEL | BULLISH | 534.9 | 540.55 | 550.95 | 530.15 | 524.5 | 519.75 | 509.35 | 538.95 | 529.25 | 1.83 |

Registered Office:#15·8-1/2/3, 2nd floor, Sllddiamber Bazar, Hyderabad - 500012, Telangana State. INDIA.

Corporate Office: #3-6-196/197, Pnme Plaza, 2nd floor, flat No. 204 A & B, H1mayath Nagar, Hyderabad - 500029, Telangana State.INDIA.

Ph:+91-40-64645000,Fax: +91-40-23262166,E-mail:support@basanonline.com,Website:www.basanonline.com