



GOLD MIXED

RANGE : 29000 - 29500

What Chart Says :

Dec Gold price has witnessed short covering on Monday. Dec Prices settled at 29384 levels by posting a low of 29229 levels.

Overall trend remains still weak and but the current upside move is consider to be as correction for the recent bearish momentum from the 29955 peaks to 29209 troughs. This corrective gains could end at 29500 levels and from then prices could extend its original bearish momentum towards 29000 levels.



SILVER SIDEWAYS

RANGE : 38800 - 39500

What Chart Says :

Dec Silver has settled at 39265 levels, gained its strength from the day's low of 38955 levels.

Trend is looking weak for the time being. Till price manages to trade below 39500 our bias remains weak. But short term corrective gains can't be ruled out towards 39500 levels. By testing 39500-39600 levels on upper end prices could extend its declines towards 38900 followed by 38700 levels. Any strong close above 39600 can change our bearish bias.



Registered Office:#15-8-1/2/3, 2nd floor, Sllddiamber Bazar, Hyderabad - 500012, Telangana State. INDIA.

Corporate Office: #3-6-196/197, Pnme Plaza, 2nd floor, flat No. 204 A & B, H1mayath Nagar, Hyderabad - 500029, Telangana State.INDIA.

Ph:+91-40-64645000,Fax: +91-40-23262166,E-mail:support@basanonline.com,Website:www.basanonline.com

CRUDE OIL STRONG

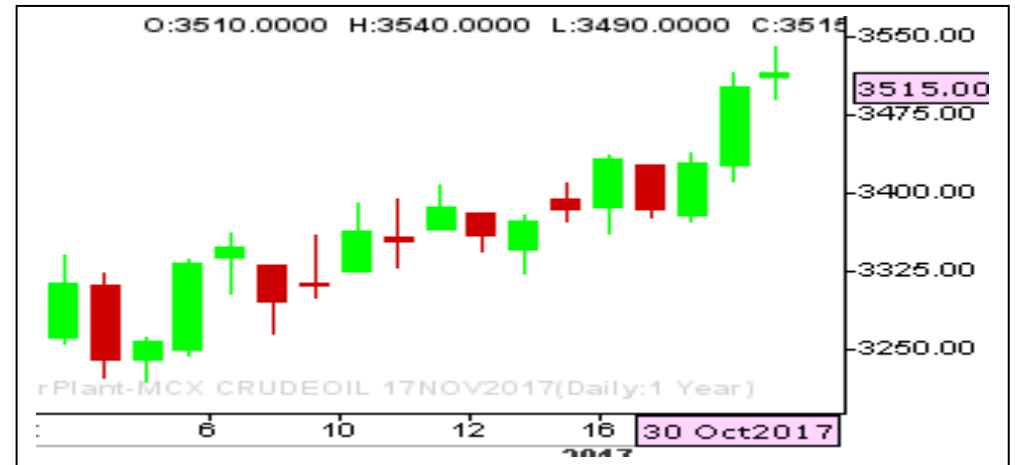
RANGE : 3470 - 3600

What Chart Says :

Nov Crude Oil witnessed positive momentum by gaining its strength from day's low of 3490 levels and finally ended its day at 3513 levels.

For the day trend remains bullish and is expected to trade sideways to higher towards 3550 followed by 3600 levels.

Hold longs initiated at 3500 levels by amending stop below 3460 levels for the price objective of 3620 followed by 3740.



ZINC MIXED

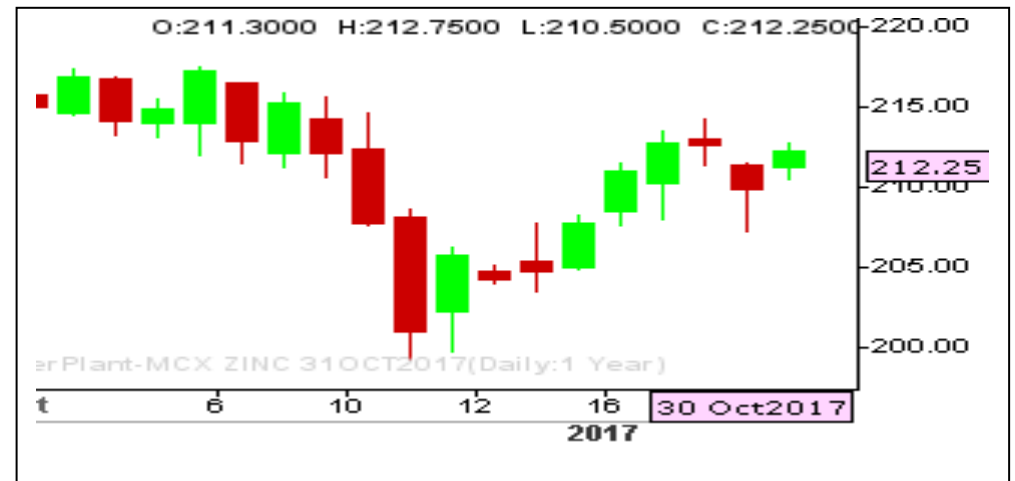
RANGE : 210.00 - 215.00

What Chart Says :

Zinc rallied to 212.40 levels from the days low of 210.50 levels.

Today prices are likely to trade sideways to higher towards 214-215 levels in near term and from there after Oct contract could continue its weakness towards 210 followed by 207 levels.

Any sustained holding above 215 only can push prices higher towards 220 levels but chances are less.





BASAN COMMODITY LIMITED

DAILY COMMODITY REPORT 31st Sep 2017

COMMODITIES	TREND	R1	R2	R3	PIVOT POINT	S1	S2	S3	Close
ALUMINI 29DEC2017	BEARISH	142.83	143.71	146.11	141.31	140.43	138.91	136.51	140.25
ALUMINI 30NOV2017	BEARISH	142.78	144.01	147.21	140.81	139.58	137.61	134.41	139.7
ALUMINI 31OCT2017	BEARISH	141.86	143.18	146.43	139.93	138.61	136.68	133.43	138.7
ALUMINIUM 31JAN2018	BULLISH	141	141	141	141	141	141	141	141
ALUMINIUM 29DEC2017	BEARISH	141.98	143.31	145.66	140.96	139.63	138.61	136.26	140.3
ALUMINIUM 30NOV2017	BEARISH	142.73	143.86	146.91	140.81	139.68	137.76	134.71	139.75
ALUMINIUM 31OCT2017	BEARISH	141.88	143.21	146.51	139.91	138.58	136.61	133.31	138.6
CARDAMOM 15JAN2018	BEARISH	1058.86	1068.43	1087.43	1049.43	1039.86	1030.43	1011.43	1011.5
CARDAMOM 15DEC2017	BEARISH	1031.4	1044.1	1065.9	1022.3	1009.6	1000.5	978.7	978
CARDAMOM 15NOV2017	BEARISH	1018.63	1022.76	1033.16	1012.36	1008.23	1001.96	991.56	974.2
COPPER 30APR2018	BEARISH	458.53	461.86	467.96	455.76	452.43	449.66	443.56	454
COPPER 28FEB2018	BEARISH	456.81	462.43	472.28	452.58	446.96	442.73	432.88	450.95
COPPER 30NOV2017	BEARISH	451.98	458.16	469.01	447.31	441.13	436.46	425.61	445.85
COPPERM 30APR2018	BEARISH	459.23	465.76	475.86	455.66	449.13	445.56	435.46	455.5
COPPERM 28FEB2018	BEARISH	457.38	463.51	474.16	452.86	446.73	442.21	431.56	451.1
COPPERM 30NOV2017	BEARISH	452.3	458.85	470.15	447.55	441	436.25	424.95	445.9
COTTON 31JAN2018	BEARISH	18350	18430	18560	18300	18220	18170	18040	18250
COTTON 29DEC2017	BEARISH	18323.3	18436.7	18626.7	18246.66	18133.3	18056.7	17866.7	18170
COTTON 30NOV2017	BEARISH	18386.7	18503.3	18703.3	18303.33	18186.7	18103.3	17903.3	18180
COTTON 31OCT2017	BULLISH	19153.3	19216.7	19396.7	19036.66	18973.3	18856.7	18676.7	19040
CPO 31JAN2018	BEARISH	545.56	547.13	549.63	544.63	543.06	542.13	539.63	544
CPO 29DEC2017	BULLISH	545	547.5	551.5	543.5	541	539.5	535.5	546.3
CPO 30NOV2017	BULLISH	545.76	549.03	554.43	543.63	540.36	538.23	532.83	546.3
CPO 31OCT2017	BULLISH	545.9	547.9	551.4	544.4	542.4	540.9	537.4	545.4
CRUDEOIL 19MAR2018	BULLISH	3592.33	3628.66	3708.66	3548.66	3512.33	3468.66	3388.66	3581
CRUDEOIL 16FEB2018	BULLISH	3565.33	3603.66	3680.66	3526.66	3488.33	3449.66	3372.66	3572
CRUDEOIL 19JAN2018	BULLISH	3544.33	3572.66	3633.66	3511.66	3483.33	3450.66	3389.66	3550
CRUDEOIL 18DEC2017	BULLISH	3558.66	3594.33	3692.33	3496.33	3460.66	3398.33	3300.33	3536
CRUDEOIL 17NOV2017	BULLISH	3539.66	3578.33	3681.33	3475.33	3436.66	3372.33	3269.33	3515
CRUDEOILM 19APR2018	BULLISH	3594.33	3635.66	3714.66	3556.66	3515.33	3477.66	3398.66	3608
CRUDEOILM 19MAR2018	BULLISH	3545	3603	3696	3510	3452	3417	3324	3617
CRUDEOILM 16FEB2018	BULLISH	3552.66	3592.33	3663.33	3521.33	3481.66	3450.33	3379.33	3566
CRUDEOILM 19JAN2018	BULLISH	3579.66	3613.33	3708.33	3518.33	3484.66	3423.33	3328.33	3558
CRUDEOILM 18DEC2017	BULLISH	3560	3596	3695	3497	3461	3398	3299	3535
CRUDEOILM 17NOV2017	BULLISH	3539	3577	3679	3475	3437	3373	3271	3515
GLDDECFE18 05DEC2017	BEARISH	300	300	300	300	300	300	300	200
GOLD 05APR2018	BULLISH	29489	29489	29489	29489	29489	29489	29489	29489

Registered Office:#15-8-1/2/3, 2nd floor, Sliddiamber Bazar, Hyderabad - 500012, Telangana State. INDIA.

Corporate Office: #3-6-196/197, Pnme Plaza, 2nd floor, flat No. 204 A & B, H1mayath Nagar, Hyderabad - 500029, Telangana State.INDIA.

Ph:+91-40-64645000,Fax: +91-40-23262166,E-mail:support@basanonline.com,Website:www.basanonline.com



BASAN COMMODITY LIMITED

DAILY COMMODITY REPORT 31st Sep 2017

COMMODITIES	TREND	R1	R2	R3	PIVOT POINT	S1	S2	S3	Close
GOLD 05FEB2018	BULLISH	29450.3	29501.7	29635.7	29367.66	29316.3	29233.7	29099.7	29470
GOLD 05DEC2017	BULLISH	29369	29420	29551	29289	29238	29158	29027	29375
GOLD 28NOV2017	BULLISH	85.33	95.16	117.16	73.16	63.33	51.16	29.16	78
GOLD 28NOV2017	BULLISH	830.16	865.33	932.83	797.83	762.66	730.33	662.83	803.5
GOLD 28NOV2017	BULLISH	677	727	816	638	588	549	460	803.5
GOLD 28NOV2017	BULLISH	64.33	67.16	72.16	62.16	59.33	57.16	52.16	803.5
GOLD 28NOV2017	BULLISH	59.83	63.16	69.66	56.66	53.33	50.16	43.66	803.5
GOLD 28NOV2017	BULLISH	55	55	55	55	55	55	55	803.5
GOLD 28NOV2017	BULLISH	498.83	504.16	513.66	494.66	489.33	485.16	475.66	803.5
GOLD 28NOV2017	BULLISH	46.66	62.33	91.33	33.33	17.66	4.33	-24.66	803.5
GOLD 28NOV2017	BULLISH	437.66	460.83	502.83	418.83	395.66	376.83	334.83	803.5
GOLD 28NOV2017	BULLISH	400	400	400	400	400	400	400	803.5
GOLD 28NOV2017	BULLISH	400	400	400	400	400	400	400	803.5
GOLD 28NOV2017	BULLISH	363.33	373.16	394.66	351.66	341.83	330.16	308.66	803.5
GOLD 28NOV2017	BULLISH	309.16	329.33	369.83	288.83	268.66	248.33	207.83	803.5
GOLD 28NOV2017	BULLISH	306.16	330.83	386.83	274.83	250.16	218.83	162.83	803.5
GOLD 28NOV2017	BULLISH	30	30	30	30	30	30	30	803.5
GOLD 28NOV2017	BULLISH	262.83	272.66	292.66	252.66	242.83	232.66	212.66	803.5
GOLD 28NOV2017	BULLISH	246.16	268.33	313.83	222.83	200.66	177.33	131.83	803.5
GOLD 28NOV2017	BULLISH	203.66	224.33	269.33	179.33	158.66	134.33	89.33	803.5
GOLD 28NOV2017	BULLISH	181.33	183.16	188.16	178.16	176.33	173.16	168.16	803.5
GOLD 28NOV2017	BULLISH	167.66	188.83	223.83	153.83	132.66	118.83	83.83	803.5
GOLD 28NOV2017	BULLISH	158	184	244	124	98	64	4	803.5
GOLD 28NOV2017	BULLISH	140	140	140	140	140	140	140	803.5
GOLD 28NOV2017	BEARISH	1270	1270	1270	1270	1270	1270	1270	803.5
GOLD 28NOV2017	BULLISH	122.33	135.16	163.16	107.16	94.33	79.16	51.16	129.5
GOLD 28NOV2017	BULLISH	117	143.5	198.5	88.5	62	33.5	-21.5	803.5
GOLDDGUINEA 29DEC2017	BEARISH	23918	24050	24333	23767	23635	23484	23201	23685
GOLDDGUINEA 30NOV2017	BEARISH	23694	23740	23828	23652	23606	23564	23476	23625
GOLDDGUINEA 31OCT2017	BEARISH	23596	23697	23895	23499	23398	23301	23103	23350
GOLDM 05JAN2018	BULLISH	29430.7	29472.3	29586.3	29358.33	29316.7	29244.3	29130.3	29453
GOLDM 05DEC2017	BULLISH	29388	29438	29567	29309	29259	29180	29051	29409
GOLDM 03NOV2017	BULLISH	29324.3	29376.7	29506.7	29246.66	29194.3	29116.7	28986.7	29349
GOLDPETAL 31JAN2018	BEARISH	2981.33	2994.66	3022.66	2966.66	2953.33	2938.66	2910.66	2965
GOLDPETAL 29DEC2017	BULLISH	2958.33	2961.66	2968.66	2954.66	2951.33	2947.66	2940.66	2958
GOLDPETAL 30NOV2017	BULLISH	2953.66	2960.33	2976.33	2944.33	2937.66	2928.33	2912.33	2947
GOLDPETAL 31OCT2017	BULLISH	2950.33	2982.66	3048.66	2916.66	2884.33	2850.66	2784.66	2924

Registered Office:#15-8-1/2/3, 2nd floor, Sllddiamber Bazar, Hyderabad - 500012, Telangana State. INDIA.

Corporate Office: #3-6-196/197, Pnme Plaza, 2nd floor, flat No. 204 A & B, H1mayath Nagar, Hyderabad - 500029, Telangana State.INDIA.

Ph:+91-40-64645000,Fax: +91-40-23262166,E-mail:support@basanonline.com,Website:www.basanonline.com



BASAN COMMODITY LIMITED

DAILY COMMODITY REPORT 31st Sep 2017

COMMODITIES	TREND	R1	R2	R3	PIVOT POINT	S1	S2	S3	Close
LEAD 31JAN2018	BULLISH	159.1	159.1	159.1	159.1	159.1	159.1	159.1	159.1
LEAD 29DEC2017	BEARISH	159.96	160.83	162.28	159.38	158.51	157.93	156.48	156.3
LEAD 30NOV2017	BEARISH	159.9	161.65	164.35	158.95	157.2	156.25	153.55	156.55
LEAD 31OCT2017	BEARISH	159.21	161.33	164.63	158.03	155.91	154.73	151.43	155.65
LEADMINI 29DEC2017	BEARISH	160.58	162.36	165.16	159.56	157.78	156.76	153.96	156.85
LEADMINI 30NOV2017	BEARISH	159.93	161.71	164.51	158.91	157.13	156.11	153.31	156.65
LEADMINI 31OCT2017	BEARISH	159.16	161.23	164.43	158.03	155.96	154.83	151.63	155.65
MENTHAOIL 31JAN2018	BULLISH	1346.33	1358.46	1387.06	1329.86	1317.73	1301.26	1272.66	1335.6
MENTHAOIL 29DEC2017	BULLISH	1337.36	1349.93	1380.43	1319.43	1306.86	1288.93	1258.43	1329.6
MENTHAOIL 30NOV2017	BULLISH	1325.06	1338.43	1370.83	1306.03	1292.66	1273.63	1241.23	1316
MENTHAOIL 31OCT2017	BULLISH	1313.96	1329.53	1366.73	1292.33	1276.76	1255.13	1217.93	1311.2
NATURALGAS 26DEC2017	BEARISH	207.16	210.43	216.13	204.73	201.46	199.03	193.33	203.2
NATURALGAS 27NOV2017	BEARISH	198.7	203.2	210.8	195.6	191.1	188	180.4	193.8
NICKEL 31JAN2018	BULLISH	761.9	762.5	763.7	761.3	760.7	760.1	758.9	761.3
NICKEL 29DEC2017	BULLISH	764.2	770.3	784.5	756.1	750	741.9	727.7	762.2
NICKEL 30NOV2017	BULLISH	760.83	767.86	784.36	751.36	744.33	734.86	718.36	758
NICKEL 31OCT2017	BULLISH	757.8	765.6	783.5	747.7	739.9	729.8	711.9	754.2
NICKELM 28FEB2018	BEARISH	764.13	767.96	774.66	761.26	757.43	754.56	747.86	760.3
NICKELM 31JAN2018	BULLISH	763.2	766.1	771.9	760.3	757.4	754.5	748.7	760.3
NICKELM 29DEC2017	BULLISH	764.06	770.43	785.33	755.53	749.16	740.63	725.73	761.6
NICKELM 30NOV2017	BULLISH	761.13	768.46	785.36	751.56	744.23	734.66	717.76	758
NICKELM 31OCT2017	BULLISH	759.46	768.93	789.33	748.53	739.06	728.13	707.73	753.8
PEPPER 20NOV2017	BULLISH	42660	42830	43130	42530	42360	42230	41930	42700
SILVER 05MAR2018	BULLISH	39897	40052	40392	39712	39557	39372	39032	39830
SILVER 05DEC2017	BULLISH	39319.7	39490.3	39858.3	39122.33	38951.7	38754.3	38386.3	39254
SILVERM 30APR2018	BULLISH	40378.7	40540.3	40816.3	40264.33	40102.7	39988.3	39712.3	40426
SILVERM 28FEB2018	BULLISH	39922.7	40071.3	40396.3	39746.33	39597.7	39421.3	39096.3	39880
SILVERM 30NOV2017	BULLISH	39342	39521	39901	39141	38962	38761	38381	39279
SILVERMIC 30APR2018	BULLISH	40415	40520	40745	40295	40190	40070	39845	40424
SILVERMIC 28FEB2018	BULLISH	39918.3	40068.7	40387.7	39749.66	39599.3	39430.7	39111.7	39900
SILVERMIC 30NOV2017	BULLISH	39355.7	39551.3	39963.3	39139.33	38943.7	38727.3	38315.3	39280
ZINC 28FEB2018	BULLISH	207.21	207.23	207.28	207.18	207.16	207.13	207.08	207.2
ZINC 29DEC2017	BULLISH	208.4	210.2	213.2	207.2	205.4	204.2	201.2	210.3
ZINC 30NOV2017	BULLISH	210.3	212.4	216.45	208.35	206.25	204.3	200.25	210.55
ZINC 31OCT2017	BULLISH	211.8	213.75	217.95	209.55	207.6	205.35	201.15	212.25
ZINCMINI 29DEC2017	BULLISH	209	210.8	214.1	207.5	205.7	204.2	200.9	210.3
ZINCMINI 30NOV2017	BULLISH	210.3	212.4	216.45	208.35	206.25	204.3	200.25	210.6

Registered Office:#15-8-1/2/3, 2nd floor, Slddiamber Bazar, Hyderabad - 500012, Telangana State. INDIA.

Corporate Office: #3-6-196/197, Pnme Plaza, 2nd floor, flat No. 204 A & B, H1mayath Nagar, Hyderabad - 500029, Telangana State.INDIA.

Ph:+91-40-64645000,Fax: +91-40-23262166,E-mail:support@basanonline.com,Website:www.basanonline.com



BASAN COMMODITY LIMITED

DAILY COMMODITY REPORT 31st Sep 2017

ZINCMINI 31OCT2017	BULLISH	212.16	214.48	219.23	209.73	207.41	204.98	200.23	212.2
--------------------	---------	--------	--------	--------	--------	--------	--------	--------	-------

Registered Office:#15-8-1/2/3, 2nd floor, Slddiamber Bazar, Hyderabad - 500012, Telangana State. INDIA.
Corporate Office: #3-6-196/197, Pnme Plaza, 2nd floor, flat No. 204 A & B, H1mayath Nagar, Hyderabad - 500029, Telangana State.INDIA.
Ph:+91-40-64645000,Fax: +91-40-23262166,E-mail:support@basanonline.com,Website:www.basanonline.com