

GOLD BULLISH

RANGE : 29500 - 29800

What Chart Says :

Oct Gold trend remains firm as price has settled well above key 29500 levels for the second consecutive day, settled at 29732 levels.

For the day prices are likely to extend its gains further towards 29800 followed by 29000 levels. Any strong close below 29500 can change our bullish bias.



SILVER STRONG

RANGE : 39000 - 40000

What Chart Says :

Dec Silver has opened gap up and settled at 39940 levels on Monday.

Trend remains firm for the day and is expected to extend its buying interest towards 40400 initially followed by 40800 levels. To attract any selling interest price needs to clear 39780 levels.



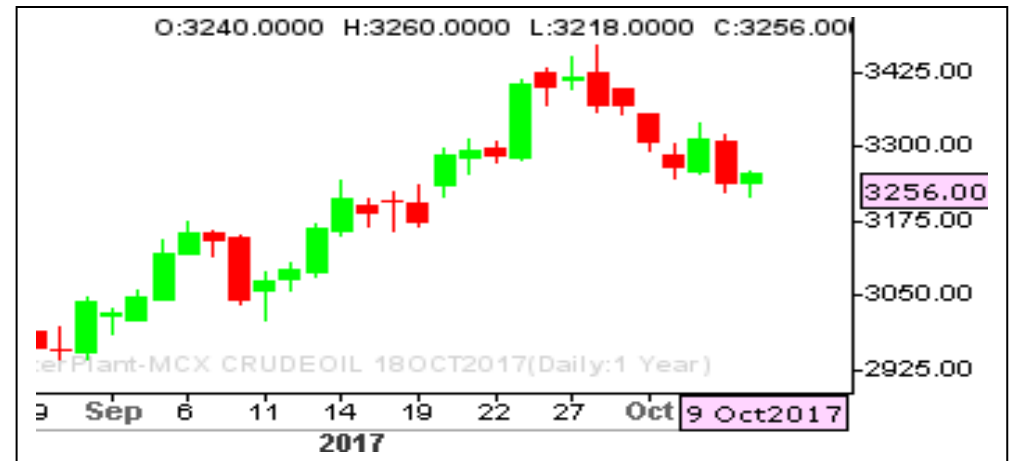
CRUDE OIL MIXED

RANGE : 3220 - 3280

What Chart Says :

Oct Crude Oil witnessed sideways momentum, prices have struggled a lot to sustain below 3220 levels and finally settled at 3256 levels.

For the day trend remains mixed and is likely to trade between 3220 - 3280 levels. Any strong break and close above 3320 only can attract buying interest, till then our bias remains weak.



ZINC STRONG

RANGE : 210.00 - 220.00

What Chart Says :

Zinc has posted a low of 213.10 levels and finally settled on positive note at 214.90 levels.

Zinc prices are likely to trade sideways to for the day between 213.50 - 219 levels. To attract any positive momentum price needs to clear 220 levels.

Awaiting for fresh entry.





BASAN COMMODITY LIMITED

DAILY COMMODITY REPORT 10th Sep 2017

| COMMODITIES | TREND | R1 | R2 | R3 | PIVOT POINT | S1 | S2 | S3 | Close |
|----------------------|---------|---------|---------|---------|-------------|---------|---------|---------|--------|
| ALUMINI 29DEC2017 | BULLISH | 142.5 | 143.2 | 145.05 | 141.35 | 140.65 | 139.5 | 137.65 | 141.8 |
| ALUMINI 30NOV2017 | BULLISH | 141.78 | 142.51 | 144.36 | 140.66 | 139.93 | 138.81 | 136.96 | 141.05 |
| ALUMINI 31OCT2017 | BULLISH | 142.48 | 143.16 | 144.96 | 141.36 | 140.68 | 139.56 | 137.76 | 141.8 |
| ALUMINIUM 30NOV2017 | BULLISH | 141.78 | 142.51 | 144.36 | 140.66 | 139.93 | 138.81 | 136.96 | 141.05 |
| ALUMINIUM 31OCT2017 | BEARISH | 1132.33 | 1146.16 | 1171.16 | 1121.16 | 1107.33 | 1096.16 | 1071.16 | 1118.5 |
| CARDAMOM 15DEC2017 | BEARISH | 1097.43 | 1110.26 | 1130.36 | 1090.16 | 1077.33 | 1070.06 | 1049.96 | 1084.6 |
| CARDAMOM 15NOV2017 | BEARISH | 1078.46 | 1097.93 | 1127.33 | 1068.53 | 1049.06 | 1039.13 | 1009.73 | 1059 |
| CARDAMOM 13OCT2017 | BEARISH | 1085.66 | 1096.83 | 1114.83 | 1078.83 | 1067.66 | 1060.83 | 1042.83 | 1074.5 |
| COPPER 28FEB2018 | BULLISH | 444.98 | 445.81 | 448.16 | 443.46 | 442.63 | 441.11 | 438.76 | 444.15 |
| COPPER 30NOV2017 | BULLISH | 440.33 | 441.26 | 443.71 | 438.81 | 437.88 | 436.36 | 433.91 | 439.4 |
| COPPERM 30APR2018 | BULLISH | 447.85 | 448.9 | 451.05 | 446.75 | 445.7 | 444.6 | 442.45 | 446.8 |
| COPPERM 28FEB2018 | BULLISH | 445 | 445.85 | 448.2 | 443.5 | 442.65 | 441.15 | 438.8 | 444.15 |
| COPPERM 30NOV2017 | BULLISH | 440.43 | 441.46 | 444.16 | 438.76 | 437.73 | 436.06 | 433.36 | 439.4 |
| COTTON 31JAN2018 | BULLISH | 18413.3 | 18426.7 | 18456.7 | 18396.66 | 18383.3 | 18366.7 | 18336.7 | 18400 |
| COTTON 29DEC2017 | BULLISH | 18370 | 18420 | 18540 | 18300 | 18250 | 18180 | 18060 | 18320 |
| COTTON 30NOV2017 | BULLISH | 18496.7 | 18563.3 | 18713.3 | 18413.33 | 18346.7 | 18263.3 | 18113.3 | 18430 |
| COTTON 31OCT2017 | BULLISH | 18933.3 | 19026.7 | 19246.7 | 18806.66 | 18713.3 | 18586.7 | 18366.7 | 18840 |
| CPO 31JAN2018 | BULLISH | 532.93 | 534.66 | 538.26 | 531.06 | 529.33 | 527.46 | 523.86 | 531.2 |
| CPO 29DEC2017 | BULLISH | 536.26 | 537.43 | 540.73 | 534.13 | 532.96 | 530.83 | 527.53 | 535.1 |
| CPO 30NOV2017 | BULLISH | 538.73 | 540.06 | 543.56 | 536.56 | 535.23 | 533.06 | 529.56 | 537.4 |
| CPO 31OCT2017 | BULLISH | 542.7 | 544.2 | 547.9 | 540.5 | 539 | 536.8 | 533.1 | 541.2 |
| CRUDEOIL 19JAN2018 | BEARISH | 3316.66 | 3330.33 | 3357.33 | 3303.33 | 3289.66 | 3276.33 | 3249.33 | 3303 |
| CRUDEOIL 18DEC2017 | BULLISH | 3303.33 | 3317.66 | 3356.66 | 3278.66 | 3264.33 | 3239.66 | 3200.66 | 3289 |
| CRUDEOIL 17NOV2017 | BULLISH | 3271.33 | 3286.66 | 3328.66 | 3244.66 | 3229.33 | 3202.66 | 3160.66 | 3256 |
| CRUDEOIL 18OCT2017 | BULLISH | 3329.66 | 3342.33 | 3376.33 | 3308.33 | 3295.66 | 3274.33 | 3240.33 | 3317 |
| CRUDEOILM 18DEC2017 | BULLISH | 3302.33 | 3316.66 | 3354.66 | 3278.66 | 3264.33 | 3240.66 | 3202.66 | 3288 |
| CRUDEOILM 17NOV2017 | BULLISH | 3270 | 3285 | 3326 | 3244 | 3229 | 3203 | 3162 | 3255 |
| CRUDEOILM 18OCT2017 | BULLISH | 29848.7 | 29888.3 | 29982.3 | 29794.33 | 29754.7 | 29700.3 | 29606.3 | 29809 |
| GOLD 05FEB2018 | BULLISH | 29781.3 | 29830.7 | 29938.7 | 29722.66 | 29673.3 | 29614.7 | 29506.7 | 29732 |
| GOLD 05DEC2017 | BULLISH | 23791.7 | 23816.3 | 23877.3 | 23755.33 | 23730.7 | 23694.3 | 23633.3 | 23767 |
| GOLDGUINEA 30NOV2017 | BULLISH | 23748.7 | 23785.3 | 23883.3 | 23687.33 | 23650.7 | 23589.3 | 23491.3 | 23712 |
| GOLDGUINEA 31OCT2017 | BEARISH | 29827 | 29874 | 29967 | 29781 | 29734 | 29688 | 29595 | 29780 |
| GOLDM 05DEC2017 | BULLISH | 29808.7 | 29867.3 | 30015.3 | 29719.33 | 29660.7 | 29571.3 | 29423.3 | 29750 |
| GOLDM 03NOV2017 | BULLISH | 29745.3 | 29820.7 | 29998.7 | 29642.66 | 29567.3 | 29464.7 | 29286.7 | 29670 |
| GOLDPETAL 29DEC2017 | BEARISH | 2984 | 2993 | 3009 | 2977 | 2968 | 2961 | 2945 | 2975 |
| GOLDPETAL 30NOV2017 | BULLISH | 2981 | 2987 | 3001 | 2973 | 2967 | 2959 | 2945 | 2975 |
| GOLDPETAL 31OCT2017 | BULLISH | 2963.33 | 2968.66 | 2980.66 | 2956.66 | 2951.33 | 2944.66 | 2932.66 | 2958 |

Registered Office:#15-8-1/2/3, 2nd floor, Slddiamber Bazar, Hyderabad - 500012, Telangana State. INDIA.

Corporate Office: #3-6-196/197, Pnme Plaza, 2nd floor, flat No. 204 A & B, H1mayath Nagar, Hyderabad - 500029, Telangana State.INDIA.

Ph:+91-40-64645000,Fax: +91-40-23262166,E-mail:support@basanonline.com,Website:www.basanonline.com



BASAN COMMODITY LIMITED

DAILY COMMODITY REPORT 10th Sep 2017

| COMMODITIES | TREND | R1 | R2 | R3 | PIVOT POINT | S1 | S2 | S3 | Close |
|----------------------|---------|---------|---------|---------|-------------|---------|---------|---------|--------|
| LEAD 29DEC2017 | BEARISH | 165.06 | 166.63 | 169.13 | 164.13 | 162.56 | 161.63 | 159.13 | 163.5 |
| LEAD 30NOV2017 | BULLISH | 166.15 | 167.5 | 170.3 | 164.7 | 163.35 | 161.9 | 159.1 | 164.8 |
| LEAD 31OCT2017 | BULLISH | 165.41 | 166.73 | 169.48 | 163.98 | 162.66 | 161.23 | 158.48 | 164.1 |
| LEADMINI 29DEC2017 | BULLISH | 165.33 | 165.86 | 167.06 | 164.66 | 164.13 | 163.46 | 162.26 | 164.8 |
| LEADMINI 30NOV2017 | BULLISH | 166.15 | 167.55 | 170.4 | 164.7 | 163.3 | 161.85 | 159 | 164.75 |
| LEADMINI 31OCT2017 | BULLISH | 165.41 | 166.73 | 169.48 | 163.98 | 162.66 | 161.23 | 158.48 | 164.1 |
| MENTHAOIL 31JAN2018 | BULLISH | 1260.2 | 1264.6 | 1275.1 | 1254.1 | 1249.7 | 1243.6 | 1233.1 | 1255.8 |
| MENTHAOIL 29DEC2017 | BEARISH | 1243.6 | 1247.8 | 1255.4 | 1240.2 | 1236 | 1232.6 | 1225 | 1239.4 |
| MENTHAOIL 30NOV2017 | BEARISH | 1234.8 | 1241.9 | 1253.4 | 1230.4 | 1223.3 | 1218.9 | 1207.4 | 1227.7 |
| MENTHAOIL 31OCT2017 | BEARISH | 1221.16 | 1228.93 | 1241.73 | 1216.13 | 1208.36 | 1203.33 | 1190.53 | 1213.4 |
| NATURALGAS 26DEC2017 | BEARISH | 210.13 | 211.96 | 215.06 | 208.86 | 207.03 | 205.76 | 202.66 | 208.3 |
| NATURALGAS 27NOV2017 | BEARISH | 201.13 | 203.46 | 207.06 | 199.86 | 197.53 | 196.26 | 192.66 | 198.8 |
| NATURALGAS 26OCT2017 | BEARISH | 188.43 | 190.66 | 194.16 | 187.16 | 184.93 | 183.66 | 180.16 | 186.2 |
| NICKEL 31JAN2018 | BEARISH | 728.03 | 730.86 | 736.36 | 725.36 | 722.53 | 719.86 | 714.36 | 725.2 |
| NICKEL 29DEC2017 | BULLISH | 730.23 | 733.86 | 742.76 | 724.96 | 721.33 | 716.06 | 707.16 | 726.6 |
| NICKEL 30NOV2017 | BULLISH | 731.53 | 738.96 | 760.36 | 717.56 | 710.13 | 696.16 | 674.76 | 724.1 |
| NICKEL 31OCT2017 | BULLISH | 725.9 | 733.4 | 754.9 | 711.9 | 704.4 | 690.4 | 668.9 | 718.4 |
| NICKELM 30NOV2017 | BULLISH | 732.8 | 740.9 | 763.6 | 718.2 | 710.1 | 695.5 | 672.8 | 724.7 |
| NICKELM 31OCT2017 | BULLISH | 726.66 | 734.73 | 757.73 | 711.73 | 703.66 | 688.73 | 665.73 | 718.6 |
| PEPPER 20NOV2017 | BULLISH | 45216.7 | 45573.3 | 46288.3 | 44858.33 | 44501.7 | 44143.3 | 43428.3 | 44860 |
| PEPPER 18OCT2017 | BULLISH | 44820 | 45035 | 45485 | 44585 | 44370 | 44135 | 43685 | 44605 |
| SILVER 04MAY2018 | BEARISH | 41007.7 | 41051.3 | 41136.3 | 40966.33 | 40922.7 | 40881.3 | 40796.3 | 40964 |
| SILVER 05MAR2018 | BULLISH | 40612 | 40683 | 40851 | 40515 | 40444 | 40347 | 40179 | 40541 |
| SILVER 05DEC2017 | BULLISH | 40032 | 40124 | 40341 | 39907 | 39815 | 39690 | 39473 | 39940 |
| SILVERM 30APR2018 | BULLISH | 41066.3 | 41083.7 | 41119.7 | 41047.66 | 41030.3 | 41011.7 | 40975.7 | 41049 |
| SILVERM 28FEB2018 | BULLISH | 40614.3 | 40690.7 | 40863.7 | 40517.66 | 40441.3 | 40344.7 | 40171.7 | 40538 |
| SILVERM 30NOV2017 | BULLISH | 40081.3 | 40215.7 | 40540.7 | 39890.66 | 39756.3 | 39565.7 | 39240.7 | 39947 |
| SILVERMIC 30APR2018 | BEARISH | 41070.7 | 41115.3 | 41195.3 | 41035.33 | 40990.7 | 40955.3 | 40875.3 | 41026 |
| SILVERMIC 28FEB2018 | BULLISH | 40628 | 40700 | 40879 | 40521 | 40449 | 40342 | 40163 | 40556 |
| SILVERMIC 30NOV2017 | BULLISH | 40099.7 | 40250.3 | 40601.3 | 39899.33 | 39748.7 | 39548.3 | 39197.3 | 39949 |
| ZINC 29DEC2017 | BEARISH | 213.7 | 215 | 217.1 | 212.9 | 211.6 | 210.8 | 208.7 | 212.4 |
| ZINC 30NOV2017 | BULLISH | 215.31 | 216.43 | 218.83 | 214.03 | 212.91 | 211.63 | 209.23 | 214.2 |
| ZINC 31OCT2017 | BULLISH | 215.93 | 216.96 | 219.41 | 214.51 | 213.48 | 212.06 | 209.61 | 214.9 |
| ZINCMINI 29DEC2017 | BEARISH | 214.36 | 215.53 | 217.58 | 213.48 | 212.31 | 211.43 | 209.38 | 213.2 |
| ZINCMINI 30NOV2017 | BULLISH | 215.31 | 216.48 | 218.93 | 214.03 | 212.86 | 211.58 | 209.13 | 214.15 |
| ZINCMINI 31OCT2017 | BULLISH | 215.88 | 216.86 | 219.21 | 214.51 | 213.53 | 212.16 | 209.81 | 214.9 |

Registered Office:#15-8-1/2/3, 2nd floor, Slddiamber Bazar, Hyderabad - 500012, Telangana State. INDIA.

Corporate Office: #3-6-196/197, Pnme Plaza, 2nd floor, flat No. 204 A & B, H1mayath Nagar, Hyderabad - 500029, Telangana State.INDIA.

Ph:+91-40-64645000,Fax: +91-40-23262166,E-mail:support@basanonline.com,Website:www.basanonline.com



BASAN COMMODITY LIMITED

DAILY COMMODITY REPORT 10th Sep 2017

Registered Office: #15-8-1/2/3, 2nd floor, Siddiamber Bazar, Hyderabad - 500012, Telangana State. INDIA.
Corporate Office: #3-6-196/197, Pnme Plaza, 2nd floor, flat No. 204 A & B, H1mayath Nagar, Hyderabad - 500029, Telangana State. INDIA.
Ph: +91-40-64645000, Fax: +91-40-23262166, E-mail: support@basanonline.com, Website: www.basanonline.com