



### GOLD BULLISH

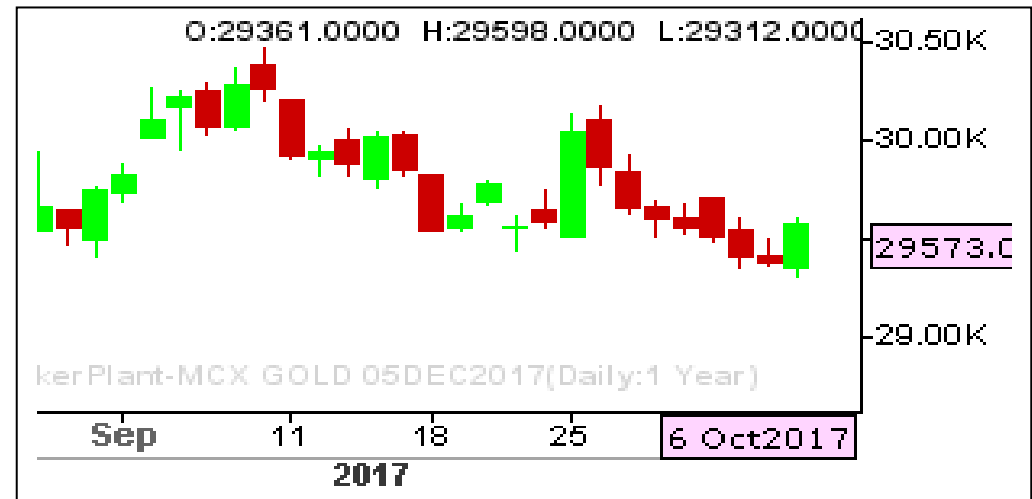
RANGE : 29500 - 29800

#### What Chart Says :

Oct Gold trend remains firm as price has settled well above key 29500 levels, gained its positive momentum after non farm pay roll data by posting a low of 29312 levels and finally settled at 29573 levels.

For the day prices are likely to extend its gains further towards 29800 followed by 29000 levels. Any strong close below 29500 can change our bullish bias.

**Book final profits for sells initiated at 29840 levels and wait for fresh entry.**



### SILVER STRONG

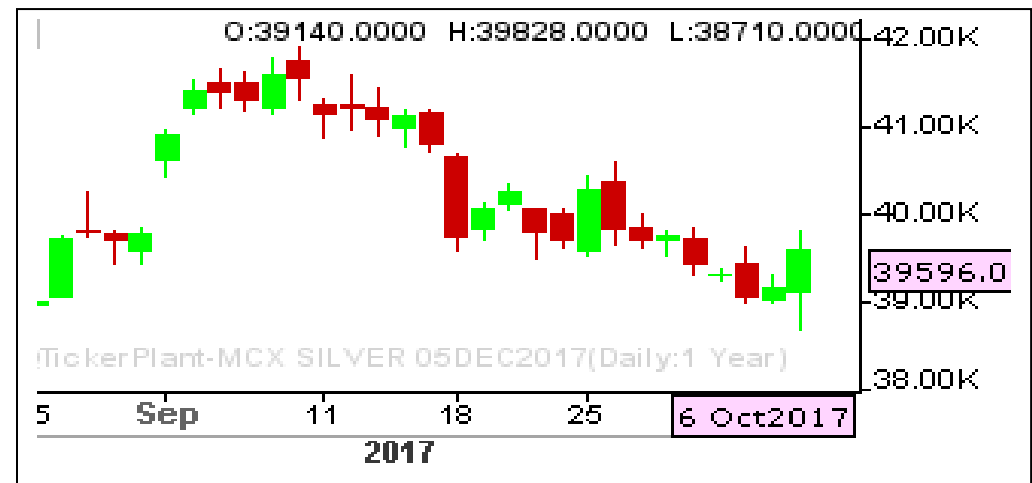
RANGE : 39000 - 40000

#### What Chart Says :

Dec Silver has witnessed very sharp moves both sides on Friday finally settled on strong note at 39596 levels gained from the lows of 38710 levels.

Trend remains firm for the day and is expected to extend its buying interest towards 40000 initially and any strong break and close above 40000 could make a way towards 40800 levels.

**Book final profits for sells initiated at 39840 levels.**



Registered Office:#15-8-1/2/3, 2nd floor, Sliddiambhar Bazar, Hyderabad - 500012, Telangana State. INDIA.

Corporate Office: #3-6-196/197, Pnme Plaza, 2nd floor, flat No. 204 A & B, H1mayath Nagar, Hyderabad - 500029, Telangana State.INDIA.

Ph:+91-40-64645000,Fax: +91-40-23262166,E-mail:support@basanonline.com,Website:[www.basanonline.com](http://www.basanonline.com)



# BASAN COMMODITY LIMITED

DAILY COMMODITY REPORT 09th Sep 2017

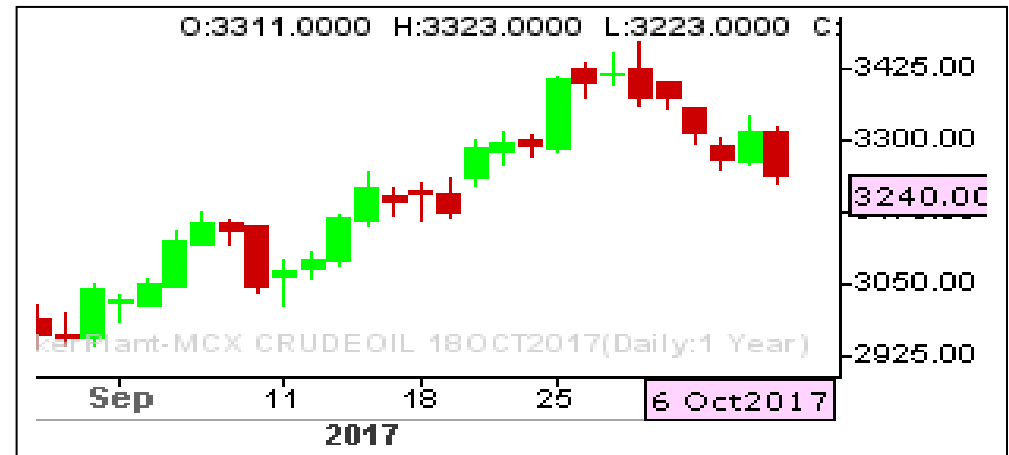
## CRUDE OIL MIXED

RANGE : 3220 - 3280

### What Chart Says :

Oct Crude Oil witnessed huge selling interest on Friday from the day's high of 3323 levels and finally settled on weak note at 3240 levels.

For the day trend remains mixed and is likely to trade between 3220 - 3280 levels. Any strong break and close above 3320 only can attract buying interest, till then our bias remains weak.



## ZINC STRONG

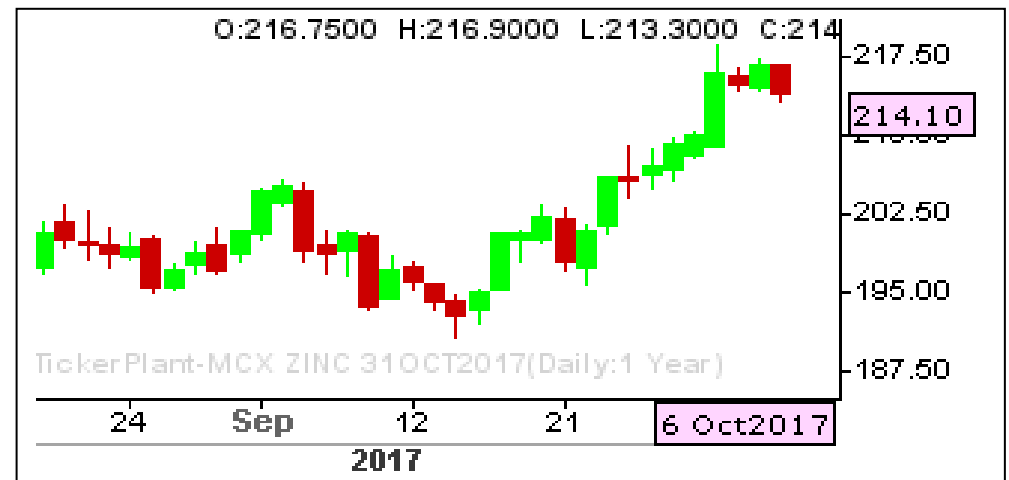
RANGE : 210.00 - 220.00

### What Chart Says :

Zinc has posted a high of 216.90 levels and finally settled on weak note at 214.10 levels.

Zinc prices are likely to trade sideways to for the day between 213.50 - 216 levels. To attract any positive momentum price needs to clear 217.50 levels.

**Awaiting for fresh entry.**



Registered Office:#15-8-1/2/3, 2nd floor, Sliddiamber Bazar, Hyderabad - 500012, Telangana State. INDIA.

Corporate Office: #3-6-196/197, Pnme Plaza, 2nd floor, flat No. 204 A & B, H1mayath Nagar, Hyderabad - 500029, Telangana State.INDIA.

Ph:+91-40-64645000,Fax: +91-40-23262166,E-mail:support@basanonline.com,Website:[www.basanonline.com](http://www.basanonline.com)



# BASAN COMMODITY LIMITED

DAILY COMMODITY REPORT 09th Sep 2017

COMMODITIES	TREND	R1	R2	R3	PIVOT POINT	S1	S2	S3	Close
ALUMINI 29DEC2017	BULLISH	141.2	141.2	141.2	141.2	141.2	141.2	141.2	141.2
ALUMINI 30NOV2017	BEARISH	141.25	141.95	143.25	140.65	139.95	139.35	138.05	140.55
ALUMINI 31OCT2017	BEARISH	140.66	141.48	142.98	139.98	139.16	138.48	136.98	139.85
ALUMINIUM 30NOV2017	BEARISH	141.15	141.8	143	140.6	139.95	139.4	138.2	140.5
ALUMINIUM 31OCT2017	BEARISH	140.7	141.55	143.1	140	139.15	138.45	136.9	139.85
CARDAMOM 15DEC2017	BEARISH	1139.63	1151.26	1172.16	1130.36	1118.73	1109.46	1088.56	1128
CARDAMOM 15NOV2017	BEARISH	1114.4	1126.1	1148.4	1103.8	1092.1	1081.5	1059.2	1102.7
CARDAMOM 13OCT2017	BEARISH	1104.6	1110.3	1121.3	1099.3	1093.6	1088.3	1077.3	1098.9
COPPER 28FEB2018	BEARISH	445.38	447.31	450.56	444.06	442.13	440.81	437.56	443.45
COPPER 30NOV2017	BEARISH	441.33	443.76	447.76	439.76	437.33	435.76	431.76	438.9
COPPERM 30APR2018	BEARISH	448.28	449.16	450.86	447.46	446.58	445.76	444.06	447.4
COPPERM 28FEB2018	BEARISH	445.38	447.26	450.41	444.11	442.23	440.96	437.81	443.5
COPPERM 30NOV2017	BEARISH	441.26	443.63	447.48	439.78	437.41	435.93	432.08	438.9
COTTON 31JAN2018	BULLISH	18313.3	18346.7	18426.7	18266.66	18233.3	18186.7	18106.7	18280
COTTON 29DEC2017	BULLISH	18286.7	18343.3	18493.3	18193.33	18136.7	18043.3	17893.3	18230
COTTON 30NOV2017	BULLISH	18370	18420	18550	18290	18240	18160	18030	18320
COTTON 31OCT2017	BULLISH	18713.3	18756.7	18866.7	18646.66	18603.3	18536.7	18426.7	18670
CPO 31JAN2018	BULLISH	531.3	532.9	536.4	529.4	527.8	525.9	522.4	529.7
CPO 29DEC2017	BULLISH	532.93	534.26	537.06	531.46	530.13	528.66	525.86	531.6
CPO 30NOV2017	BULLISH	535.26	536.83	540.53	533.13	531.56	529.43	525.73	533.7
CPO 31OCT2017	BULLISH	538.53	539.86	542.76	536.96	535.63	534.06	531.16	537.2
CRUDEOIL 19JAN2018	BEARISH	3364.66	3388.33	3429.33	3347.33	3323.66	3306.33	3265.33	3341
CRUDEOIL 18DEC2017	BEARISH	3358.66	3416.33	3508.33	3324.33	3266.66	3232.33	3140.33	3301
CRUDEOIL 17NOV2017	BEARISH	3335	3395	3494	3296	3236	3197	3098	3275
CRUDEOIL 18OCT2017	BEARISH	3301	3362	3462	3262	3201	3162	3062	3240
CRUDEOILM 18DEC2017	BEARISH	3363.66	3418.33	3509.33	3327.33	3272.66	3236.33	3145.33	3309
CRUDEOILM 17NOV2017	BEARISH	3341	3407	3515	3299	3233	3191	3083	3275
CRUDEOILM 18OCT2017	BEARISH	3301	3363	3464	3262	3200	3161	3060	3239
GOLD 05FEB2018	BULLISH	29740.3	29840.7	30117.7	29563.66	29463.3	29286.7	29009.7	29640
GOLD 05DEC2017	BULLISH	29676.7	29780.3	30066.3	29494.33	29390.7	29208.3	28922.3	29573
GOLDGUINEA 30NOV2017	BULLISH	23715.7	23774.3	23920.3	23628.33	23569.7	23482.3	23336.3	23657
GOLDGUINEA 31OCT2017	BULLISH	23626.7	23671.3	23789.3	23553.33	23508.7	23435.3	23317.3	23582
GOLDM 05DEC2017	BULLISH	29679.3	29780.7	30052.7	29508.66	29407.3	29236.7	28964.7	29578
GOLDM 03NOV2017	BULLISH	29608.7	29707.3	29973.3	29441.33	29342.7	29175.3	28909.3	29510
GOLDPETAL 29DEC2017	BEARISH	2975.33	2982.66	2996.66	2968.66	2961.33	2954.66	2940.66	2968
GOLDPETAL 30NOV2017	BULLISH	2964.66	2970.33	2985.33	2955.33	2949.66	2940.33	2925.33	2959
GOLDPETAL 31OCT2017	BULLISH	2953.66	2960.33	2977.33	2943.33	2936.66	2926.33	2909.33	2947

Registered Office:#15-8-1/2/3, 2nd floor, Slddiamber Bazar, Hyderabad - 500012, Telangana State. INDIA.

Corporate Office: #3-6-196/197, Pnme Plaza, 2nd floor, flat No. 204 A & B, H1mayath Nagar, Hyderabad - 500029, Telangana State.INDIA.

Ph:+91-40-64645000,Fax: +91-40-23262166,E-mail:support@basanonline.com,Website:[www.basanonline.com](http://www.basanonline.com)



# BASAN COMMODITY LIMITED

DAILY COMMODITY REPORT 09th Sep 2017

COMMODITIES	TREND	R1	R2	R3	PIVOT POINT	S1	S2	S3	Close
LEAD 29DEC2017	BEARISH	167.28	168.01	169.36	166.66	165.93	165.31	163.96	166.55
LEAD 30NOV2017	BEARISH	169.2	171.75	176.5	167	164.45	162.25	157.5	166.65
LEAD 31OCT2017	BEARISH	168.51	171.13	175.98	166.28	163.66	161.43	156.58	165.9
LEADMINI 29DEC2017	BEARISH	167.33	168.26	169.96	166.56	165.63	164.86	163.16	166.4
LEADMINI 30NOV2017	BEARISH	169.03	171.51	176.11	166.91	164.43	162.31	157.71	166.55
LEADMINI 31OCT2017	BEARISH	168.5	171.1	175.9	166.3	163.7	161.5	156.7	165.9
MENTHAOIL 31JAN2018	BULLISH	1245	1245	1245	1245	1245	1245	1245	1245
MENTHAOIL 29DEC2017	BEARISH	1246.3	1251.8	1262.6	1241	1235.5	1230.2	1219.4	1240.8
MENTHAOIL 30NOV2017	BEARISH	1234.83	1244.56	1259.86	1229.26	1219.53	1213.96	1198.66	1225.1
MENTHAOIL 31OCT2017	BEARISH	1221.73	1231.86	1247.86	1215.86	1205.73	1199.86	1183.86	1211.6
NATURALGAS 26DEC2017	BEARISH	211.4	213	215.6	210.4	208.8	207.8	205.2	209.8
NATURALGAS 27NOV2017	BEARISH	202.66	204.83	208.23	201.43	199.26	198.03	194.63	200.5
NATURALGAS 26OCT2017	BEARISH	190.86	193.43	197.53	189.33	186.76	185.23	181.13	188.3
NICKEL 31JAN2018	BULLISH	714	714	714	714	714	714	714	714
NICKEL 29DEC2017	BEARISH	708.5	711.2	716	706.4	703.7	701.6	696.8	705.8
NICKEL 30NOV2017	BEARISH	703.6	708.4	717.6	699.2	694.4	690	680.8	698.8
NICKEL 31OCT2017	BEARISH	698.03	702.86	712.36	693.36	688.53	683.86	674.36	693.2
NICKELM 30NOV2017	BEARISH	703.46	708.13	717.13	699.13	694.46	690.13	681.13	698.8
NICKELM 31OCT2017	BEARISH	697.9	702.6	711.8	693.4	688.7	684.2	675	693.2
PEPPER 18OCT2017	BULLISH	44400	44400	44400	44400	44400	44400	44400	44400
SILVER 04MAY2018	BULLISH	40150	40150	40150	40150	40150	40150	40150	40150
SILVER 05MAR2018	BULLISH	40600	40987	42011	39963	39576	38939	37915	40213
SILVER 05DEC2017	BULLISH	40046	40496	41614	39378	38928	38260	37142	39596
SILVERM 30APR2018	BEARISH	40846	41145	41689	40601	40302	40057	39513	40547
SILVERM 28FEB2018	BULLISH	40638.7	41046.3	42093.3	39999.33	39591.7	38952.3	37905.3	40231
SILVERM 30NOV2017	BULLISH	40070.3	40519.7	41643.7	39395.66	38946.3	38271.7	37147.7	39621
SILVERMIC 30APR2018	BULLISH	41191	41541	42494	40588	40238	39635	38682	40841
SILVERMIC 28FEB2018	BULLISH	40630.7	41038.3	42077.3	39999.33	39591.7	38960.3	37921.3	40223
SILVERMIC 30NOV2017	BULLISH	40063	40506	41618	39394	38951	38282	37170	39620
ZINC 29DEC2017	BULLISH	216	216.05	216.15	215.95	215.9	215.85	215.75	215.95
ZINC 30NOV2017	BEARISH	215.93	218.01	221.51	214.51	212.43	211.01	207.51	213.85
ZINC 31OCT2017	BEARISH	216.23	218.36	221.96	214.76	212.63	211.16	207.56	214.1
ZINCMINI 29DEC2017	BULLISH	216.43	217.51	220.11	214.91	213.83	212.31	209.71	215.35
ZINCMINI 30NOV2017	BEARISH	215.86	217.98	221.53	214.43	212.31	210.88	207.33	213.75
ZINCMINI 31OCT2017	BEARISH	216.2	218.3	221.8	214.8	212.7	211.3	207.8	214.1

Registered Office:#15-8-1/2/3, 2nd floor, Slddiamber Bazar, Hyderabad - 500012, Telangana State. INDIA.

Corporate Office: #3-6-196/197, Pnme Plaza, 2nd floor, flat No. 204 A & B, H1mayath Nagar, Hyderabad - 500029, Telangana State.INDIA.

Ph:+91-40-64645000,Fax: +91-40-23262166,E-mail:support@basanonline.com,Website:[www.basanonline.com](http://www.basanonline.com)



# **BASAN COMMODITY LIMITED**

**DAILY COMMODITY REPORT 09th Sep 2017**

Registered Office:#15-8-1/2/3, 2nd floor, Slddiamber Bazar, Hyderabad - 500012, Telangana State. INDIA.  
Corporate Office: #3-6-196/197, Pnme Plaza, 2nd floor, flat No. 204 A & B, H1mayath Nagar, Hyderabad - 500029, Telangana State.INDIA.  
Ph:+91-40-64645000,Fax: +91-40-23262166,E-mail:support@basanonline.com,Website:[www.basanonline.com](http://www.basanonline.com)