



# BASAN COMMODITY LIMITED

DAILY COMMODITY REPORT 04th Sep 2017

## GOLD BEARISH

RANGE : 29800 - 29200

### What Chart Says :

On Tuesday Oct Gold witnessed selling interest and finally settled at 29509 by posting a high of 29705 levels.

Gold trend remains weak and is likely to trade sideways to lower towards 29420 followed by 29200 levels. Resistance levels are eyed at 29700.

**Hold sells initiated at 29840 levels with stop above 30200 for extended targets of 29320 levels.**



## SILVER WEAK

RANGE : 39800 - 38800

### What Chart Says :

Dec Silver prices settled on weak note at 39328 levels by posting a high of 39400 levels.

Dec Silver Trend remains weak for the day and is expected to extend its declines towards 39000 initially and any strong break and close below 39000 could make a way towards 38500 levels.

**Hold sells initiated at 39840 levels with stop above 40000 for 39000 and 38500 levels.**



Registered Office:#15-8-1/2/3, 2nd floor, Sliddiamber Bazar, Hyderabad - 500012, Telangana State. INDIA.

Corporate Office: #3-6-196/197, Pnme Plaza, 2nd floor, flat No. 204 A & B, H1mayath Nagar, Hyderabad - 500029, Telangana State.INDIA.

Ph:+91-40-64645000,Fax: +91-40-23262166,E-mail:support@basanonline.com,Website:[www.basanonline.com](http://www.basanonline.com)



# BASAN COMMODITY LIMITED

DAILY COMMODITY REPORT 04th Sep 2017

## CRUDE OIL WEAK

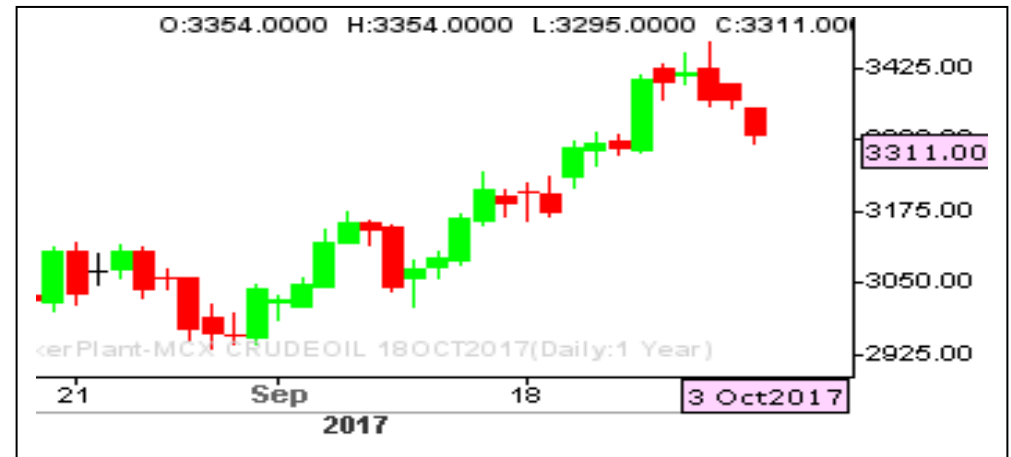
RANGE : 3400 - 3250

### What Chart Says :

Oct Crude Oil settled at 3311 levels by posting a high of 3354 levels.

Oct Crude Oil trend remains weak and is likely to dip further towards supports of 3260 followed by 3240 levels . Resistance levels are eyed at 3350.

**Awaiting for fresh entry.**



## ZINC STRONG

RANGE : 200.00 - 210.00

### What Chart Says :

Zinc has posted a new life high of 218.80 levels and finally settled at 216.00 levels.

Zinc prices are likely to trade sideways to higher towards 219 levels and any corrective declines can't be ruled out towards 212 levels.

**Awaiting for fresh entry.**



Registered Office:#15-8-1/2/3, 2nd floor, Sliddiamber Bazar, Hyderabad - 500012, Telangana State. INDIA.

Corporate Office: #3-6-196/197, Pnme Plaza, 2nd floor, flat No. 204 A & B, H1mayath Nagar, Hyderabad - 500029, Telangana State.INDIA.

Ph:+91-40-64645000,Fax: +91-40-23262166,E-mail:support@basanonline.com,Website:[www.basanonline.com](http://www.basanonline.com)



# BASAN COMMODITY LIMITED

DAILY COMMODITY REPORT 04th Sep 2017

COMMODITIES	TREND	R1	R2	R3	PIVOT POINT	S1	S2	S3	Close
ALUMINI 30NOV2017	BULLISH	141.13	142.06	144.71	139.41	138.48	136.76	134.11	140.2
ALUMINI 31OCT2017	BULLISH	140.66	141.68	144.53	138.83	137.81	135.98	133.13	139.65
ALUMINIUM 30NOV2017	BULLISH	141.15	142.1	144.75	139.45	138.5	136.8	134.15	140.2
ALUMINIUM 31OCT2017	BULLISH	140.65	141.65	144.4	138.9	137.9	136.15	133.4	139.65
CARDAMOM 15DEC2017	BULLISH	1114.9	1114.9	1114.9	1114.9	1114.9	1114.9	1114.9	1114.9
CARDAMOM 15NOV2017	BEARISH	1123.4	1140.7	1173.7	1107.7	1090.4	1074.7	1041.7	1106.1
CARDAMOM 13OCT2017	BULLISH	1108.93	1125.46	1161.46	1089.46	1072.93	1053.46	1017.46	1092.4
COPPER 30APR2018	BULLISH	436.2	436.55	437.45	435.65	435.3	434.75	433.85	435.85
COPPER 28FEB2018	BULLISH	436.4	438.7	444.15	433.25	430.95	427.8	422.35	434.1
COPPER 30NOV2017	BULLISH	432.6	435.3	441.45	429.15	426.45	423	416.85	429.9
COPPERM 30APR2018	BEARISH	438.16	440.48	444.73	436.23	433.91	431.98	427.73	435.85
COPPERM 28FEB2018	BULLISH	436.53	438.81	444.21	433.41	431.13	428.01	422.61	434.25
COPPERM 30NOV2017	BULLISH	432.68	435.41	441.86	428.96	426.23	422.51	416.06	429.95
COTTON 31JAN2018	BEARISH	18256.7	18293.3	18353.3	18233.33	18196.7	18173.3	18113.3	18220
COTTON 29DEC2017	BULLISH	18216.7	18253.3	18343.3	18163.33	18126.7	18073.3	17983.3	18180
COTTON 30NOV2017	BULLISH	18323.3	18366.7	18476.7	18256.66	18213.3	18146.7	18036.7	18280
COTTON 31OCT2017	BULLISH	18600	18670	18850	18490	18420	18310	18130	18530
CPO 31JAN2018	BULLISH	530.26	531.83	535.23	528.43	526.86	525.03	521.63	528.7
CPO 29DEC2017	BULLISH	534.5	538.6	547.3	529.9	525.8	521.2	512.5	530.4
CPO 30NOV2017	BULLISH	537.1	541.6	551.4	531.8	527.3	522	512.2	532.6
CPO 31OCT2017	BULLISH	540.3	545.4	555.9	534.9	529.8	524.4	513.9	535.2
CRUDEOIL 19MAR2018	BULLISH	3437	3439	3443	3435	3433	3431	3427	3435
CRUDEOIL 18DEC2017	BEARISH	3386.66	3397.33	3418.33	3376.33	3365.66	3355.33	3334.33	3376
CRUDEOIL 17NOV2017	BEARISH	3377.66	3412.33	3472.33	3352.33	3317.66	3292.33	3232.33	3343
CRUDEOIL 18OCT2017	BEARISH	3345	3379	3438	3320	3286	3261	3202	3311
CRUDEOILM 19JAN2018	BEARISH	3434.33	3460.66	3506.66	3414.66	3388.33	3368.66	3322.66	3408
CRUDEOILM 18DEC2017	BEARISH	3395.66	3420.33	3461.33	3379.33	3354.66	3338.33	3297.33	3371
CRUDEOILM 17NOV2017	BEARISH	3372	3401	3451	3351	3322	3301	3251	3343
CRUDEOILM 18OCT2017	BEARISH	3349	3387	3454	3320	3282	3253	3186	3311
GOLD 05FEB2018	BULLISH	29641.3	29674.7	29748.7	29600.66	29567.3	29526.7	29452.7	29608
GOLD 05DEC2017	BEARISH	29646	29783	29998	29568	29431	29353	29138	29509
GOLD 05OCT2017	BEARISH	29470	29585	29785	29385	29270	29185	28985	29355
GOLDGUINEA 30NOV2017	BULLISH	23825.3	23861.7	23934.7	23788.66	23752.3	23715.7	23642.7	23789
GOLDGUINEA 31OCT2017	BEARISH	23835	23928	24081	23775	23682	23622	23469	23742
GOLDM 05DEC2017	BEARISH	29564.3	29613.7	29700.7	29526.66	29477.3	29439.7	29352.7	29515
GOLDM 03NOV2017	BEARISH	29555	29662	29830	29494	29387	29326	29158	29448
GOLDM 05OCT2017	BEARISH	29453.3	29506.7	29610.7	29402.66	29349.3	29298.7	29194.7	29400

Registered Office:#15-8-1/2/3, 2nd floor, Slddiamber Bazar, Hyderabad - 500012, Telangana State. INDIA.

Corporate Office: #3-6-196/197, Pnme Plaza, 2nd floor, flat No. 204 A & B, H1mayath Nagar, Hyderabad - 500029, Telangana State.INDIA.

Ph:+91-40-64645000,Fax: +91-40-23262166,E-mail:support@basanonline.com,Website:[www.basanonline.com](http://www.basanonline.com)



# BASAN COMMODITY LIMITED

DAILY COMMODITY REPORT 04th Sep 2017

COMMODITIES	TREND	R1	R2	R3	PIVOT POINT	S1	S2	S3	Close
GOLDPETAL 29DEC2017	BEARISH	2995.33	3008.66	3033.66	2983.66	2970.33	2958.66	2933.66	2982
GOLDPETAL 30NOV2017	BEARISH	2972.33	2979.66	2992.66	2966.66	2959.33	2953.66	2940.66	2965
GOLDPETAL 31OCT2017	BEARISH	2959.33	2963.66	2971.66	2955.66	2951.33	2947.66	2939.66	2955
LEAD 29DEC2017	BEARISH	170.5	170.95	171.7	170.2	169.75	169.45	168.7	170.05
LEAD 30NOV2017	BULLISH	173.18	175.66	182.71	168.61	166.13	161.56	154.51	170.7
LEAD 31OCT2017	BULLISH	172.56	174.98	181.98	167.98	165.56	160.98	153.98	170.15
LEADMINI 30NOV2017	BULLISH	172.93	175.31	182.16	168.46	166.08	161.61	154.76	170.55
LEADMINI 31OCT2017	BULLISH	172.6	175.1	182.3	167.9	165.4	160.7	153.5	170.1
MENTHAOIL 29DEC2017	BULLISH	1225.53	1232.06	1249.36	1214.76	1208.23	1197.46	1180.16	1219
MENTHAOIL 30NOV2017	BULLISH	1217.73	1225.86	1246.86	1204.86	1196.73	1183.86	1162.86	1209.6
MENTHAOIL 31OCT2017	BULLISH	1207.73	1217.66	1241.36	1193.96	1184.03	1170.26	1146.56	1197.8
NATURALGAS 26DEC2017	BEARISH	214.3	215.8	218.5	213.1	211.6	210.4	207.7	212.8
NATURALGAS 27NOV2017	BEARISH	206.76	209.83	214.93	204.73	201.66	199.63	194.53	203.7
NATURALGAS 26OCT2017	BEARISH	194.66	198.63	205.03	192.23	188.26	185.83	179.43	190.7
NICKEL 31JAN2018	BULLISH	720.13	725.86	737.36	714.36	708.63	702.86	691.36	714.4
NICKEL 29DEC2017	BULLISH	719.1	725.9	742.3	709.5	702.7	693.1	676.7	712.3
NICKEL 30NOV2017	BULLISH	715.56	723.93	744.53	703.33	694.96	682.73	662.13	707.2
NICKEL 31OCT2017	BULLISH	710.5	719.8	742.4	697.2	687.9	674.6	652	701.2
NICKELM 30NOV2017	BULLISH	715.26	723.73	744.13	703.33	694.86	682.93	662.53	706.8
NICKELM 31OCT2017	BULLISH	710.13	719.16	740.86	697.46	688.43	675.76	654.06	701.1
PEPPER 18OCT2017	BEARISH	44066.7	44133.3	44233.3	44033.33	43966.7	43933.3	43833.3	44000
SILVER 05MAR2018	BULLISH	40006	40066	40208	39924	39864	39782	39640	39946
SILVER 05DEC2017	BULLISH	39400.3	39472.7	39617.7	39327.66	39255.3	39182.7	39037.7	39328
SILVERM 30APR2018	BULLISH	40522	40558	40630	40486	40450	40414	40342	40486
SILVERM 28FEB2018	BULLISH	40041.7	40111.3	40263.3	39959.33	39889.7	39807.3	39655.3	39972
SILVERM 30NOV2017	BULLISH	39437.3	39519.7	39690.7	39348.66	39266.3	39177.7	39006.7	39355
SILVERMIC 30APR2018	BULLISH	40542	40586	40686	40486	40442	40386	40286	40498
SILVERMIC 28FEB2018	BULLISH	40112.7	40251.3	40621.3	39881.33	39742.7	39511.3	39141.3	39974
SILVERMIC 30NOV2017	BULLISH	39517.3	39678.7	40038.7	39318.66	39157.3	38958.7	38598.7	39356
ZINC 29DEC2017	BULLISH	215.65	215.7	215.8	215.6	215.55	215.5	215.4	215.6
ZINC 30NOV2017	BULLISH	219.26	222.63	230.33	214.93	211.56	207.23	199.53	215.9
ZINC 31OCT2017	BULLISH	220.23	224.46	234.36	214.56	210.33	204.66	194.76	216
ZINCMINI 31JAN2018	BULLISH	215.16	216.48	219.13	213.83	212.51	211.18	208.53	213.85
ZINCMINI 29DEC2017	BULLISH	217.06	218.88	223.48	214.28	212.46	209.68	205.08	215.25
ZINCMINI 30NOV2017	BULLISH	219.03	222.26	230.86	213.66	210.43	205.06	196.46	215.8
ZINCMINI 31OCT2017	BULLISH	220.26	224.53	234.98	214.08	209.81	203.63	193.18	216

Registered Office:#15-8-1/2/3, 2nd floor, Slddiamber Bazar, Hyderabad - 500012, Telangana State. INDIA.

Corporate Office: #3-6-196/197, Pnme Plaza, 2nd floor, flat No. 204 A & B, H1mayath Nagar, Hyderabad - 500029, Telangana State.INDIA.

Ph:+91-40-64645000,Fax: +91-40-23262166,E-mail:support@basanonline.com,Website:[www.basanonline.com](http://www.basanonline.com)



# **BASAN COMMODITY LIMITED**

**DAILY COMMODITY REPORT 04th Sep 2017**

Registered Office:#15-8-1/2/3, 2nd floor, Slddiamber Bazar, Hyderabad - 500012, Telangana State. INDIA.  
Corporate Office: #3-6-196/197, Pnme Plaza, 2nd floor, flat No. 204 A & B, H1mayath Nagar, Hyderabad - 500029, Telangana State.INDIA.  
Ph:+91-40-64645000,Fax: +91-40-23262166,E-mail:support@basanonline.com,Website:[www.basanonline.com](http://www.basanonline.com)