



BASAN COMMODITY LIMITED

DAILY COMMODITY REPORT 25th Sep 2017

GOLD BEARISH

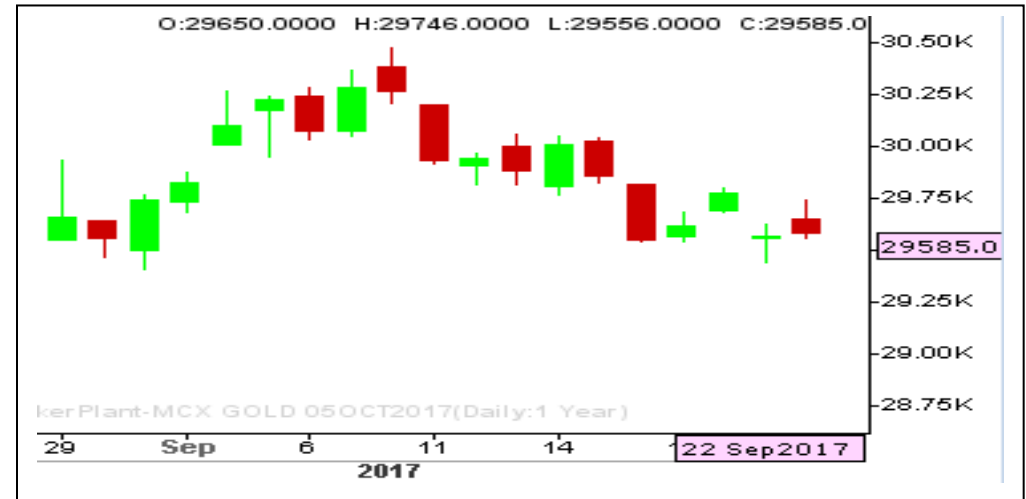
RANGE : 29800 - 29200

What Chart Says :

On Friday Oct Gold opened gap up and finally settled at 29585 levels by posting a high of 29746 levels.

For the day trend remains weak and is likely to trade sideways to lower towards 29450 followed by 29200 levels. Any intraday gains could be limited to 29680-700 levels.

Hold remaining Sells initiated at 29820 with stop above 29850 for 29200 levels, part profits booked at 29450 levels.



SILVER WEAK

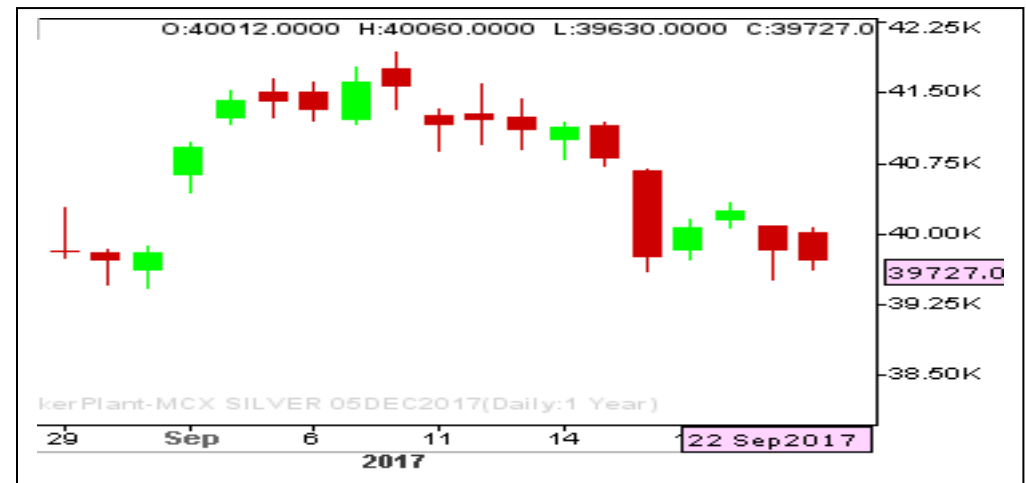
RANGE : 40000 - 39000

What Chart Says :

Dec Silver prices opened gap up and finally settled at 39727 levels by posting a high of 40060 levels.

Trend remains bearish for the day and is expected to extend its declines towards 39400 followed by 38700 levels in near future by testing 40000 levels on upper end.

Hold remaining Sells initiated at 40600 levels for the price objective of 38700. part profits booked at 39800 levels.



Registered Office: #15-8-1/2/3, 2nd floor, Siddhambur Bazar, Hyderabad - 500012, Telangana State. INDIA.

Corporate Office: #3-6-196/197, Pnme Plaza, 2nd floor, flat No. 204 A & B, H1mayath Nagar, Hyderabad - 500029, Telangana State. INDIA.

Ph: +91-40-64645000, Fax: +91-40-23262166, E-mail: support@basanonline.com, Website: www.basanonline.com



BASAN COMMODITY LIMITED

DAILY COMMODITY REPORT 25th Sep 2017

CRUDE OIL BULLISH

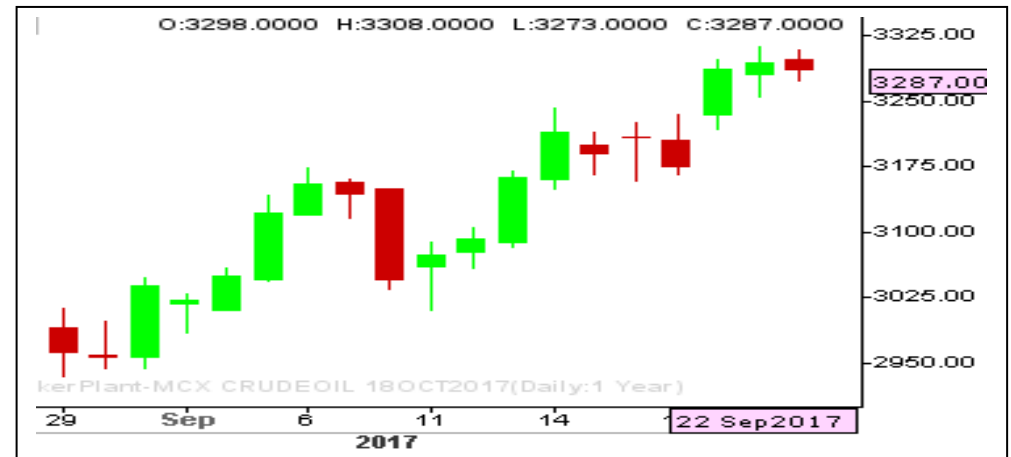
RANGE : 3200 - 3380

What Chart Says :

Oct Crude Oil settled at 3287 levels by posting a high of 3308 levels.

Overall trend remains firm till price manages to trade above 3250 levels with the price outlook of 3350 levels. Any strong close below 3250 only can change our bias.

Buy on dips with stop below 3200 for 3380 levels.



ZINC MIXED

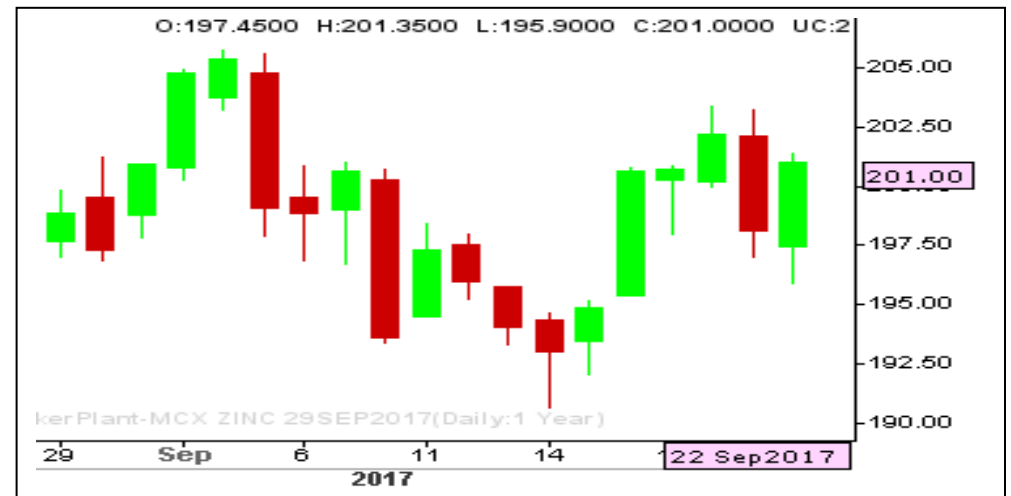
RANGE : 200.00 - 204.00

What Chart Says :

Zinc has regained its positive sentiment from day's low of 195.90 levels and finally settled at 201.00 levels , leaving room for further gains.

For the day prices are likely to trade sideways to higher towards 205 followed by 208 levels till price manages to trade above 195 levels.

Exit sells initiated at 201 levels and wait for fresh entry.



Registered Office:#15-8-1/2/3, 2nd floor, Sliddiamber Bazar, Hyderabad - 500012, Telangana State. INDIA.

Corporate Office: #3-6-196/197, Pnme Plaza, 2nd floor, flat No. 204 A & B, H1mayath Nagar, Hyderabad - 500029, Telangana State.INDIA.

Ph:+91-40-64645000,Fax: +91-40-23262166,E-mail:support@basanonline.com,Website:www.basanonline.com



BASAN COMMODITY LIMITED

DAILY COMMODITY REPORT 25th Sep 2017

COMMODITIES	TREND	R1	R2	R3	PIVOT POINT	S1	S2	S3	Close
ALUMINI 30NOV2017	BULLISH	141.16	142.28	144.98	139.58	138.46	136.88	134.18	140.05
ALUMINI 31OCT2017	BULLISH	140.66	141.83	144.88	138.78	137.61	135.73	132.68	139.5
ALUMINI 29SEP2017	BULLISH	140.06	141.18	144.28	138.08	136.96	134.98	131.88	138.95
ALUMINIUM 30NOV2017	BEARISH	139.83	141.31	143.91	138.71	137.23	136.11	133.51	138.35
ALUMINIUM 31OCT2017	BULLISH	140.7	141.85	144.9	138.8	137.65	135.75	132.7	139.55
ALUMINIUM 29SEP2017	BULLISH	140.06	141.18	144.28	138.08	136.96	134.98	131.88	138.95
CARDAMOM 15DEC2017	BULLISH	1145.1	1147.6	1152.6	1142.6	1140.1	1137.6	1132.6	1142.6
CARDAMOM 15NOV2017	BULLISH	1174.4	1184.2	1206.2	1162.2	1152.4	1140.2	1118.2	1164.6
CARDAMOM 13OCT2017	BEARISH	1195.73	1208.16	1230.96	1185.36	1172.93	1162.56	1139.76	1183.3
COPPER 30APR2018	BEARISH	430.65	432.8	436.85	428.75	426.6	424.7	420.65	428.5
COPPER 28FEB2018	BULLISH	430	432.05	438.15	425.95	423.9	419.85	413.75	427.95
COPPER 30NOV2017	BULLISH	425.83	428.11	434.66	421.56	419.28	415.01	408.46	423.55
COPPERM 30APR2018	BEARISH	430.38	432.56	436.61	428.51	426.33	424.46	420.41	428.2
COPPERM 28FEB2018	BULLISH	430.55	433.1	440	426.2	423.65	419.3	412.4	428
COPPERM 30NOV2017	BULLISH	425.98	428.36	435.11	421.61	419.23	414.86	408.11	423.6
COTTON 31JAN2018	BULLISH	18123.3	18156.7	18236.7	18076.66	18043.3	17996.7	17916.7	18090
COTTON 29DEC2017	BULLISH	18036.7	18073.3	18163.3	17983.33	17946.7	17893.3	17803.3	18000
COTTON 30NOV2017	BULLISH	18156.7	18203.3	18333.3	18073.33	18026.7	17943.3	17813.3	18110
COTTON 31OCT2017	BULLISH	18533.3	18596.7	18766.7	18426.66	18363.3	18256.7	18086.7	18470
CPO 29DEC2017	BULLISH	541.23	543.46	548.16	538.76	536.53	534.06	529.36	539
CPO 30NOV2017	BULLISH	543.33	545.16	550.16	540.16	538.33	535.16	530.16	541.5
CPO 31OCT2017	BULLISH	544.86	546.93	552.43	541.43	539.36	535.93	530.43	542.8
CPO 29SEP2017	BULLISH	546.73	548.56	553.46	543.66	541.83	538.76	533.86	544.9
CRUDEOIL 19JAN2018	BULLISH	3370	3370	3370	3370	3370	3370	3370	3370
CRUDEOIL 18DEC2017	BULLISH	3364.33	3373.66	3394.66	3352.66	3343.33	3331.66	3310.66	3355
CRUDEOIL 17NOV2017	BEARISH	3335.33	3351.66	3382.66	3320.66	3304.33	3289.66	3258.66	3319
CRUDEOIL 18OCT2017	BEARISH	3305.66	3324.33	3359.33	3289.33	3270.66	3254.33	3219.33	3287
CRUDEOILM 18DEC2017	BEARISH	3363.66	3378.33	3405.33	3351.33	3336.66	3324.33	3297.33	3349
CRUDEOILM 17NOV2017	BEARISH	3336.33	3353.66	3386.66	3320.66	3303.33	3287.66	3254.66	3319
CRUDEOILM 18OCT2017	BEARISH	3307	3327	3364	3290	3270	3253	3216	3287
GOLD 05FEB2018	BULLISH	29850	29875	29925	29825	29800	29775	29725	29825
GOLD 05DEC2017	BEARISH	29830.7	29961.3	30167.3	29755.33	29624.7	29549.3	29343.3	29700
GOLD 05OCT2017	BEARISH	29702	29819	30009	29629	29512	29439	29249	29585
GOLDGUINEA 31OCT2017	BEARISH	23963.3	24037.7	24163.7	23911.66	23837.3	23785.7	23659.7	23889
GOLDGUINEA 29SEP2017	BEARISH	23940.7	24110.3	24400.3	23820.33	23650.7	23530.3	23240.3	23771
GOLDM 05DEC2017	BEARISH	29838	29946	30120	29772	29664	29598	29424	29730
GOLDM 03NOV2017	BEARISH	29766.7	29873.3	30043.3	29703.33	29596.7	29533.3	29363.3	29660

Registered Office:#15-8-1/2/3, 2nd floor, Slddiamber Bazar, Hyderabad - 500012, Telangana State. INDIA.

Corporate Office: #3-6-196/197, Pnme Plaza, 2nd floor, flat No. 204 A & B, H1mayath Nagar, Hyderabad - 500029, Telangana State.INDIA.

Ph:+91-40-64645000,Fax: +91-40-23262166,E-mail:support@basanonline.com,Website:www.basanonline.com



BASAN COMMODITY LIMITED

DAILY COMMODITY REPORT 25th Sep 2017

COMMODITIES	TREND	R1	R2	R3	PIVOT POINT	S1	S2	S3	Close
GOLDM 05OCT2017	BEARISH	29721.3	29834.7	30015.7	29653.66	29540.3	29472.7	29291.7	29608
GOLDPETAL 30NOV2017	BULLISH	2987	2993	3006	2980	2974	2967	2954	2981
GOLDPETAL 31OCT2017	BEARISH	2976.66	2990.33	3012.33	2968.33	2954.66	2946.33	2924.33	2963
GOLDPETAL 29SEP2017	BEARISH	2947	2959	2979	2939	2927	2919	2899	2935
LEAD 30NOV2017	BULLISH	161.08	162.56	165.56	159.56	158.08	156.56	153.56	159.6
LEAD 31OCT2017	BULLISH	163.78	165.96	172.26	159.66	157.48	153.36	147.06	161.6
LEAD 29SEP2017	BULLISH	163.91	166.18	172.78	159.58	157.31	152.98	146.38	161.65
LEADMINI 30NOV2017	BULLISH	163.36	165.38	170.83	159.93	157.91	154.48	149.03	161.35
LEADMINI 31OCT2017	BULLISH	163.66	165.83	172.08	159.58	157.41	153.33	147.08	161.5
LEADMINI 29SEP2017	BULLISH	163.96	166.23	172.83	159.63	157.36	153.03	146.43	161.7
MENTHAOIL 29DEC2017	BEARISH	1215.66	1218.83	1224.83	1212.83	1209.66	1206.83	1200.83	1212.5
MENTHAOIL 30NOV2017	BEARISH	1207.86	1213.93	1224.93	1202.93	1196.86	1191.93	1180.93	1201.8
MENTHAOIL 31OCT2017	BEARISH	1195.16	1201.93	1214.23	1189.63	1182.86	1177.33	1165.03	1188.4
MENTHAOIL 29SEP2017	BEARISH	1181.9	1188.7	1201.2	1176.2	1169.4	1163.7	1151.2	1175.1
NATURALGAS 27NOV2017	BULLISH	208.3	208.9	210.4	207.4	206.8	205.9	204.4	207.7
NATURALGAS 26OCT2017	BULLISH	198.2	199	200.8	197.2	196.4	195.4	193.6	197.4
NATURALGAS 26SEP2017	BULLISH	193.56	194.53	196.63	192.43	191.46	190.33	188.23	192.6
NICKEL 30NOV2017	BULLISH	700.63	705.76	716.46	695.06	689.93	684.36	673.66	695.5
NICKEL 31OCT2017	BULLISH	699.43	705.66	720.96	690.36	684.13	675.06	659.76	693.2
NICKEL 29SEP2017	BULLISH	693.2	699.5	715.3	683.7	677.4	667.9	652.1	686.9
NICKELM 30NOV2017	BULLISH	703.86	709.63	723.83	695.43	689.66	681.23	667.03	698.1
NICKELM 31OCT2017	BULLISH	699.83	706.26	722.06	690.46	684.03	674.66	658.86	693.4
NICKELM 29SEP2017	BULLISH	693.46	700.13	716.43	683.83	677.16	667.53	651.23	686.8
PEPPER 18OCT2017	BULLISH	44653.3	45076.7	45926.7	44226.66	43803.3	43376.7	42526.7	44230
SILVER 05MAR2018	BEARISH	40544.3	40795.7	41203.7	40387.66	40136.3	39979.7	39571.7	40293
SILVER 05DEC2017	BEARISH	39981.3	40235.7	40665.7	39805.66	39551.3	39375.7	38945.7	39727
SILVERM 30APR2018	BULLISH	40916	40916	40916	40916	40916	40916	40916	40916
SILVERM 28FEB2018	BEARISH	40564.3	40804.7	41204.7	40404.66	40164.3	40004.7	39604.7	40324
SILVERM 30NOV2017	BEARISH	39996.7	40258.3	40693.3	39823.33	39561.7	39388.3	38953.3	39735
SILVERMIC 30APR2018	BEARISH	41096	41339	41730	40948	40705	40557	40166	40853
SILVERMIC 28FEB2018	BEARISH	40562	40801	41196	40406	40167	40011	39616	40323
SILVERMIC 30NOV2017	BEARISH	39995.3	40254.7	40683.7	39825.66	39566.3	39396.7	38967.7	39736
ZINC 30NOV2017	BULLISH	200.55	202.35	206.15	198.55	196.75	194.75	190.95	198.75
ZINC 31OCT2017	BULLISH	201.33	203.16	207.71	198.61	196.78	194.06	189.51	199.5
ZINC 29SEP2017	BULLISH	202.93	204.86	210.31	199.41	197.48	193.96	188.51	201
ZINCMINI 30NOV2017	BULLISH	201.21	202.63	206.68	198.58	197.16	194.53	190.48	199.8
ZINCMINI 31OCT2017	BULLISH	201.4	203.2	207.75	198.65	196.85	194.1	189.55	199.6

Registered Office:#15-8-1/2/3, 2nd floor, Slddiamber Bazar, Hyderabad - 500012, Telangana State. INDIA.

Corporate Office: #3-6-196/197, Pnme Plaza, 2nd floor, flat No. 204 A & B, H1mayath Nagar, Hyderabad - 500029, Telangana State.INDIA.

Ph:+91-40-64645000,Fax: +91-40-23262166,E-mail:support@basanonline.com,Website:www.basanonline.com



BASAN COMMODITY LIMITED

DAILY COMMODITY REPORT 25th Sep 2017

COMMODITIES	TREND	R1	R2	R3	PIVOT POINT	S1	S2	S3	Close
ZINCMINI 29SEP2017	BULLISH	203	204.95	210.5	199.4	197.45	193.85	188.3	201.05

Registered Office:#15-8-1/2/3, 2nd floor, Slddiamber Bazar, Hyderabad - 500012, Telangana State. INDIA.
Corporate Office: #3-6-196/197, Pnme Plaza, 2nd floor, flat No. 204 A & B, H1mayath Nagar, Hyderabad - 500029, Telangana State.INDIA.
Ph:+91-40-64645000,Fax: +91-40-23262166,E-mail:support@basanonline.com,Website:www.basanonline.com