



BASAN COMMODITY LIMITED

DAILY COMMODITY REPORT 22nd Sep 2017

GOLD BEARISH

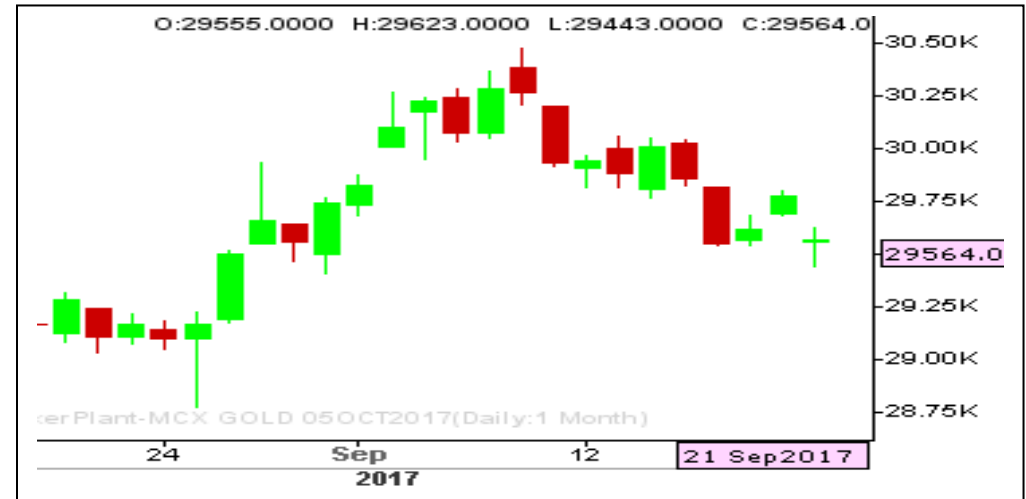
RANGE : 29800 - 29200

What Chart Says :

On Thursday Oct Gold opened gap down and finally settled at 29564 levels by posting a low of 29443 levels.

For the day trend remains weak and is likely to trade sideways to lower towards 29450 followed by 29200 levels. Any intraday gains could be limited to 29680-700 levels.

Hold remaining Sells initiated at 29820 with stop above 29850 for 29200 levels, part profits booked at 29450 levels.



SILVER WEAK

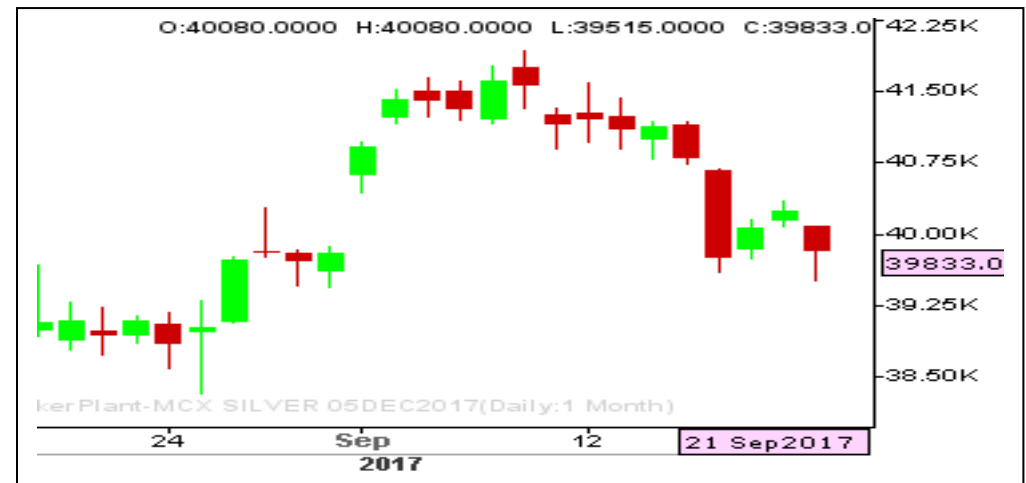
RANGE : 40400 - 39000

What Chart Says :

Dec Silver prices opened gap down and finally settled at 39833 levels by posting a low of 39515 levels.

Trend remains bearish for the day and is likely to extend its declines towards 39400 followed by 38700 levels in near future by testing 40000 levels on upper end.

Hold remaining Sells initiated at 40600 levels for the price objective of 38700. part profits booked at 39800 levels.



Registered Office: #15-8-1/2/3, 2nd floor, Siddhambur Bazar, Hyderabad - 500012, Telangana State. INDIA.

Corporate Office: #3-6-196/197, Pnme Plaza, 2nd floor, flat No. 204 A & B, H1mayath Nagar, Hyderabad - 500029, Telangana State. INDIA.

Ph: +91-40-64645000, Fax: +91-40-23262166, E-mail: support@basanonline.com, Website: www.basanonline.com

CRUDE OIL BULLISH

RANGE : 3200 - 3380

What Chart Says :

Oct Crude Oil settled at 3295 levels by posting a high of 3312 levels.

Overall trend remains firm till price manages to trade above 3250 levels. Any strong close below 3250 only can change our bias.

Buy on dips with stop below 3200 for 3380 levels.



ZINC MIXED

RANGE : 200.00 - 204.00

What Chart Says :

Zinc has witnessed selling interest from day's high of 203.20 levels to settle at 198.10, leaving room for further corrective declines.

For the day prices are likely to trade sideways to lower towards 195 followed by 192 levels till price manages to trade below 201 levels.

Sell on rallies till price manages to trade below 201 with stop above 205, targeting 195 and 190 levels.





BASAN COMMODITY LIMITED

DAILY COMMODITY REPORT 22nd Sep 2017

COMMODITIES	TREND	R1	R2	R3	PIVOT POINT	S1	S2	S3	Close
ALUMINI 30NOV2017	BULLISH	142.7	144.15	147.3	141	139.55	137.85	134.7	141.25
ALUMINI 31OCT2017	BEARISH	141.46	143.63	147.33	139.93	137.76	136.23	132.53	139.3
ALUMINI 29SEP2017	BEARISH	140.73	143.11	147.16	139.06	136.68	135.01	130.96	138.35
ALUMINIUM 30NOV2017	BULLISH	142.8	144.3	147.5	141.1	139.6	137.9	134.7	141.3
ALUMINIUM 31OCT2017	BEARISH	141.5	143.75	147.55	139.95	137.7	136.15	132.35	139.25
ALUMINIUM 29SEP2017	BEARISH	140.68	143.01	146.96	139.06	136.73	135.11	131.16	138.35
CARDAMOM 15JAN2018	BULLISH	1147	1147.5	1148.5	1146.5	1146	1145.5	1144.5	1146.5
CARDAMOM 15DEC2017	BEARISH	1136	1148	1168	1128	1116	1108	1088	1124
CARDAMOM 15NOV2017	BULLISH	1162.26	1179.03	1224.43	1133.63	1116.86	1088.23	1042.83	1145.5
CARDAMOM 13OCT2017	BULLISH	1181.76	1196.23	1234.03	1158.43	1143.96	1120.63	1082.83	1167.3
COPPER 30APR2018	BEARISH	431.76	433.38	436.43	430.33	428.71	427.28	424.23	430.15
COPPER 28FEB2018	BULLISH	430.26	433.48	440.43	426.53	423.31	419.58	412.63	427.05
COPPER 30NOV2017	BULLISH	426.23	429.71	437.21	422.21	418.73	414.71	407.21	422.75
COPPERM 30APR2018	BULLISH	429.5	429.95	430.85	429.05	428.6	428.15	427.25	429.05
COPPERM 28FEB2018	BULLISH	430.05	433.1	439.75	426.45	423.4	419.8	413.15	427
COPPERM 30NOV2017	BULLISH	426.1	429.5	436.85	422.15	418.75	414.8	407.45	422.7
COTTON 31JAN2018	BEARISH	18083.3	18146.7	18266.7	18026.66	17963.3	17906.7	17786.7	18020
COTTON 29DEC2017	BULLISH	18036.7	18083.3	18203.3	17963.33	17916.7	17843.3	17723.3	17990
COTTON 30NOV2017	BULLISH	18086.7	18143.3	18283.3	18003.33	17946.7	17863.3	17723.3	18030
COTTON 31OCT2017	BULLISH	18433.3	18526.7	18716.7	18336.66	18243.3	18146.7	17956.7	18340
CPO 29DEC2017	BEARISH	535.83	537.96	541.56	534.36	532.23	530.76	527.16	533.7
CPO 30NOV2017	BULLISH	538.6	540.8	545.3	536.3	534.1	531.8	527.3	536.4
CPO 31OCT2017	BEARISH	539.53	541.66	545.76	537.56	535.43	533.46	529.36	537.4
CPO 29SEP2017	BEARISH	542.33	544.86	549.46	540.26	537.73	535.66	531.06	539.8
CRUDEOIL 18DEC2017	BULLISH	3366	3377	3402	3352	3341	3327	3302	3355
CRUDEOIL 17NOV2017	BULLISH	3348.33	3369.66	3420.66	3318.66	3297.33	3267.66	3216.66	3327
CRUDEOIL 18OCT2017	BULLISH	3319.66	3344.33	3401.33	3287.33	3262.66	3230.33	3173.33	3295
CRUDEOILM 19JAN2018	BULLISH	3368	3371	3378	3364	3361	3357	3350	3365
CRUDEOILM 18DEC2017	BULLISH	3371.66	3390.33	3435.33	3345.33	3326.66	3300.33	3255.33	3353
CRUDEOILM 17NOV2017	BULLISH	3348	3370	3422	3318	3296	3266	3214	3326
CRUDEOILM 18OCT2017	BULLISH	3318	3341	3395	3287	3264	3233	3179	3295
GOLD 05FEB2018	BULLISH	29757.3	29777.7	29825.7	29729.66	29709.3	29681.7	29633.7	29737
GOLD 05DEC2017	BULLISH	29796	29881	30069	29693	29608	29505	29317	29711
GOLD 05OCT2017	BULLISH	29643.7	29723.3	29903.3	29543.33	29463.7	29363.3	29183.3	29564
GOLDGUINEA 31OCT2017	BULLISH	23861.3	23900.7	23995.7	23805.66	23766.3	23710.7	23615.7	23822
GOLDGUINEA 29SEP2017	BULLISH	23788	23877	24063	23691	23602	23505	23319	23699
GOLDM 05DEC2017	BULLISH	29804	29879	30056	29702	29627	29525	29348	29729

Registered Office:#15-8-1/2/3, 2nd floor, Slddiamber Bazar, Hyderabad - 500012, Telangana State. INDIA.

Corporate Office: #3-6-196/197, Pnme Plaza, 2nd floor, flat No. 204 A & B, H1mayath Nagar, Hyderabad - 500029, Telangana State.INDIA.

Ph:+91-40-64645000,Fax: +91-40-23262166,E-mail:support@basanonline.com,Website:www.basanonline.com



BASAN COMMODITY LIMITED

DAILY COMMODITY REPORT 22nd Sep 2017

COMMODITIES	TREND	R1	R2	R3	PIVOT POINT	S1	S2	S3	Close
GOLDM 03NOV2017	BULLISH	29745.3	29845.7	30061.7	29629.66	29529.3	29413.7	29197.7	29645
GOLDM 05OCT2017	BULLISH	29692.7	29801.3	30031.3	29571.33	29462.7	29341.3	29111.3	29584
GOLDPETAL 30NOV2017	BULLISH	2975	2979	2987	2971	2967	2963	2955	2971
GOLDPETAL 31OCT2017	BULLISH	2970.33	2978.66	2995.66	2961.66	2953.33	2944.66	2927.66	2962
GOLDPETAL 29SEP2017	BEARISH	2947.66	2959.33	2979.33	2939.33	2927.66	2919.33	2899.33	2936
LEAD 30NOV2017	BULLISH	162.16	163.83	168.08	159.58	157.91	155.33	151.08	160.5
LEAD 31OCT2017	BULLISH	163.5	166.8	173.8	159.8	156.5	152.8	145.8	160.2
LEAD 29SEP2017	BULLISH	163.6	167.05	174.6	159.5	156.05	151.95	144.4	160.15
LEADMINI 30NOV2017	BULLISH	163.91	166.83	173.23	160.43	157.51	154.03	147.63	161
LEADMINI 31OCT2017	BULLISH	163.35	166.6	173.5	159.7	156.45	152.8	145.9	160.1
LEADMINI 29SEP2017	BULLISH	163.56	167.03	174.58	159.48	156.01	151.93	144.38	160.1
MENTHAOIL 29DEC2017	BULLISH	1211.1	1211.1	1211.1	1211.1	1211.1	1211.1	1211.1	1211.1
MENTHAOIL 30NOV2017	BEARISH	1207.13	1214.06	1226.06	1202.06	1195.13	1190.06	1178.06	1200.2
MENTHAOIL 31OCT2017	BEARISH	1194.5	1202.5	1216.1	1188.9	1180.9	1175.3	1161.7	1186.5
MENTHAOIL 29SEP2017	BEARISH	1181.6	1191.1	1206.9	1175.3	1165.8	1159.5	1143.7	1172.1
NATURALGAS 27NOV2017	BEARISH	211.53	215.86	222.46	209.26	204.93	202.66	196.06	207.2
NATURALGAS 26OCT2017	BEARISH	202.03	207.06	214.76	199.36	194.33	191.66	183.96	197
NATURALGAS 26SEP2017	BEARISH	197.7	203.2	211.6	194.8	189.3	186.4	178	192.2
NICKEL 30NOV2017	BULLISH	728.93	738.86	762.26	715.46	705.53	692.06	668.66	719
NICKEL 31OCT2017	BEARISH	721.13	741.56	775.56	707.56	687.13	673.56	639.56	700.7
NICKEL 29SEP2017	BEARISH	715.23	736.06	770.76	701.36	680.53	666.66	631.96	694.4
NICKELM 30NOV2017	BEARISH	723.96	742.13	772.03	712.23	694.06	682.33	652.43	705.8
NICKELM 31OCT2017	BEARISH	721.23	741.46	775.16	707.76	687.53	674.06	640.36	701
NICKELM 29SEP2017	BEARISH	717.66	741.03	779.33	702.73	679.36	664.43	626.13	694.3
PEPPER 18OCT2017	BEARISH	44556.7	45118.3	45998.3	44238.33	43676.7	43358.3	42478.3	43995
SILVER 05MAR2018	BULLISH	40535.3	40678.7	41039.7	40317.66	40174.3	39956.7	39595.7	40392
SILVER 05DEC2017	BULLISH	40103.7	40374.3	40939.3	39809.33	39538.7	39244.3	38679.3	39833
SILVERM 30APR2018	BULLISH	40897.7	40978.3	41144.3	40812.33	40731.7	40646.3	40480.3	40817
SILVERM 28FEB2018	BULLISH	40575.7	40726.3	41109.3	40343.33	40192.7	39960.3	39577.3	40425
SILVERM 30NOV2017	BULLISH	40156.7	40457.3	41060.3	39854.33	39553.7	39251.3	38648.3	39856
SILVERMIC 30APR2018	BULLISH	41030.7	41165.3	41482.3	40848.33	40713.7	40531.3	40214.3	40896
SILVERMIC 28FEB2018	BULLISH	40629.7	40819.3	41268.3	40370.33	40180.7	39921.3	39472.3	40440
SILVERMIC 30NOV2017	BULLISH	40145.7	40438.3	41026.3	39850.33	39557.7	39262.3	38674.3	39853
ZINC 29DEC2017	BULLISH	200.85	200.85	200.85	200.85	200.85	200.85	200.85	200.85
ZINC 30NOV2017	BEARISH	200.91	202.73	206.28	199.18	197.36	195.63	192.08	199.1
ZINC 31OCT2017	BEARISH	201.7	205.3	211.25	199.35	195.75	193.4	187.45	198.1
ZINC 29SEP2017	BEARISH	201.85	205.6	211.75	199.45	195.7	193.3	187.15	198.1

Registered Office:#15-8-1/2/3, 2nd floor, Slddiamber Bazar, Hyderabad - 500012, Telangana State. INDIA.

Corporate Office: #3-6-196/197, Pnme Plaza, 2nd floor, flat No. 204 A & B, H1mayath Nagar, Hyderabad - 500029, Telangana State.INDIA.

Ph:+91-40-64645000,Fax: +91-40-23262166,E-mail:support@basanonline.com,Website:www.basanonline.com



BASAN COMMODITY LIMITED

DAILY COMMODITY REPORT 22nd Sep 2017

COMMODITIES	TREND	R1	R2	R3	PIVOT POINT	S1	S2	S3	Close
ZINCMINI 30NOV2017	BEARISH	201.43	204.86	210.26	199.46	196.03	194.06	188.66	198
ZINCMINI 31OCT2017	BEARISH	201.63	205.21	211.06	199.36	195.78	193.51	187.66	198.05
ZINCMINI 29SEP2017	BEARISH	201.83	205.56	211.66	199.46	195.73	193.36	187.26	198.1

Registered Office:#15·8-1/2/3, 2nd floor, Slddiamber Bazar, Hyderabad - 500012, Telangana State. INDIA.
Corporate Office: #3-6-196/197, Pnme Plaza, 2nd floor, flat No. 204 A & B, H1mayath Nagar, Hyderabad - 500029, Telangana State.INDIA.
Ph:+91-40-64645000,Fax: +91-40-23262166,E-mail:support@basanonline.com,Website:www.basanonline.com