

**GOLD BEARISH**

**RANGE : 29800 - 29200**

**What Chart Says :**

On Wednesday Oct Gold settled at 29774 levels gained some positive strength by posting a low of 29680 levels.

For the day trend remains weak and is likely to trade sideways to lower towards 29450 followed by 29200 levels. Any intraday gains could be limited to 29800 levels.

**Hold remaining Sells initiated at 29820 with stop above 29850 for 29200 levels.**



**SILVER WEAK**

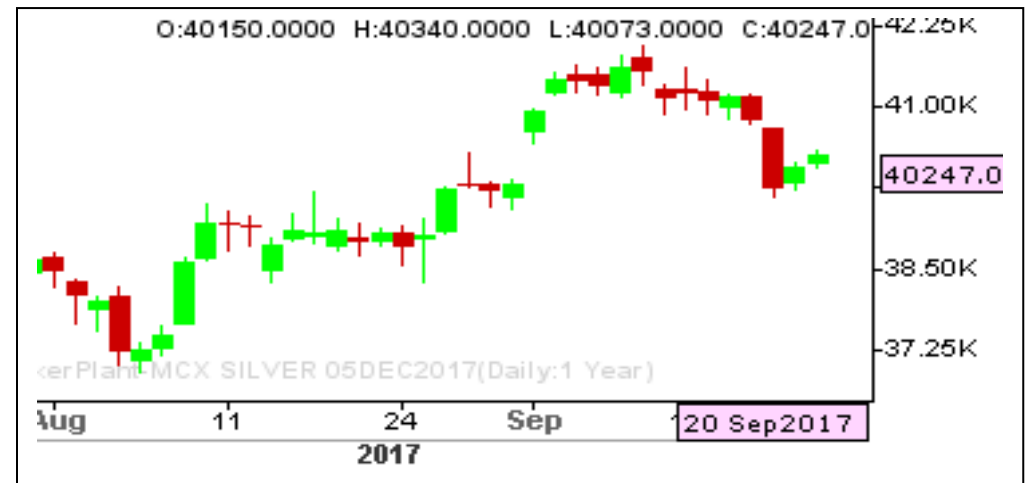
**RANGE : 40400 - 39000**

**What Chart Says :**

Dec Silver prices settled at 40247 levels, witnessed corrective gains from the day's low of 40073 levels.

Trend remains bearish and is likely to extend its declines towards 39400 followed by 38700 levels in near future. Alternatively, any strong close above 40700 only can change our bearish bias.

**Hold remaining Sells initiated at 40600 levels for the price objective of 38700.**



**CRUDE OIL BULLISH**

**RANGE : 3200 - 3380**

**What Chart Says :**

Oct Crude Oil settled at 3286 levels by posting a low of 3218 levels.

Overall trend remains firm till price manages to trade above 3220 levels. Any strong close below 3200 can change our bias.

**Buy on dips with stop below 3200 for 3380 levels.**



**ZINC MIXED**

**RANGE : 200.00 - 204.00**

**What Chart Says :**

Zinc has witnessed strong positive momentum the day's low of 199.95 levels and finally settled at 202.20 levels.

For the day prices are likely to trade sideways to higher towards 200 to 204 levels.

Awaiting for fresh entry.





# BASAN COMMODITY LIMITED

DAILY COMMODITY REPORT 21st Sep 2017

COMMODITIES	TREND	R1	R2	R3	PIVOT POINT	S1	S2	S3	Close
ALUMINI 31JAN2018	BULLISH	138.25	138.25	138.25	138.25	138.25	138.25	138.25	138.25
ALUMINI 30NOV2017	BULLISH	141.3	142.75	146.35	139.15	137.7	135.55	131.95	139.85
ALUMINI 31OCT2017	BULLISH	141.33	142.81	146.91	138.71	137.23	134.61	130.51	139.85
ALUMINI 29SEP2017	BULLISH	140.58	142.06	146.21	137.91	136.43	133.76	129.61	139.1
ALUMINIUM 30NOV2017	BULLISH	141.13	141.61	142.86	140.36	139.88	139.11	137.86	140.65
ALUMINIUM 31OCT2017	BULLISH	141.36	142.78	146.78	138.78	137.36	134.78	130.78	139.95
ALUMINIUM 29SEP2017	BULLISH	140.55	142	146.05	137.95	136.5	133.9	129.85	139.1
CARDAMOM 15JAN2018	BULLISH	1115.46	1116.73	1119.73	1113.73	1112.46	1110.73	1107.73	1114.2
CARDAMOM 15DEC2017	BEARISH	1128.93	1132.86	1139.76	1125.96	1122.03	1119.06	1112.16	1125
CARDAMOM 15NOV2017	BEARISH	1132.1	1147.3	1174.8	1119.8	1104.6	1092.3	1064.8	1116.9
CARDAMOM 13OCT2017	BEARISH	1153.8	1168.8	1193.2	1144.4	1129.4	1120	1095.6	1138.8
COPPER 28FEB2018	BEARISH	430.85	433.1	437.4	428.8	426.55	424.5	420.2	428.6
COPPER 30NOV2017	BEARISH	426.96	429.78	434.98	424.58	421.76	419.38	414.18	424.15
COPPERM 30APR2018	BULLISH	432.46	433.18	434.63	431.73	431.01	430.28	428.83	431.75
COPPERM 28FEB2018	BEARISH	431.06	433.58	438.18	428.98	426.46	424.38	419.78	428.55
COPPERM 30NOV2017	BEARISH	426.86	429.68	434.83	424.53	421.71	419.38	414.23	424.05
COTTON 31JAN2018	BULLISH	18103.3	18146.7	18246.7	18046.66	18003.3	17946.7	17846.7	18060
COTTON 29DEC2017	BULLISH	18023.3	18076.7	18186.7	17966.66	17913.3	17856.7	17746.7	17970
COTTON 30NOV2017	BULLISH	18120	18180	18310	18050	17990	17920	17790	18060
COTTON 31OCT2017	BEARISH	18503.3	18576.7	18696.7	18456.66	18383.3	18336.7	18216.7	18430
CPO 29DEC2017	BEARISH	536.2	536.5	537	536	535.7	535.5	535	535.9
CPO 30NOV2017	BEARISH	537.66	541.03	546.83	535.23	531.86	529.43	523.63	534.3
CPO 31OCT2017	BEARISH	540	544	551	537	533	530	523	536
CPO 29SEP2017	BEARISH	543.7	547.5	554.4	540.6	536.8	533.7	526.8	539.9
CRUDEOIL 18DEC2017	BEARISH	3320.33	3333.66	3359.66	3307.66	3294.33	3281.66	3255.66	3307
CRUDEOIL 17NOV2017	BULLISH	3337.33	3360.66	3420.66	3300.66	3277.33	3240.66	3180.66	3314
CRUDEOIL 18OCT2017	BULLISH	3316.66	3347.33	3427.33	3267.33	3236.66	3187.33	3107.33	3286
CRUDEOILM 19JAN2018	BULLISH	3375	3406	3475	3337	3306	3268	3199	3344
CRUDEOILM 18DEC2017	BULLISH	3365.66	3385.33	3440.33	3330.33	3310.66	3275.33	3220.33	3346
CRUDEOILM 17NOV2017	BULLISH	3336.33	3358.66	3415.66	3301.66	3279.33	3244.66	3187.66	3314
CRUDEOILM 18OCT2017	BULLISH	3312.66	3339.33	3407.33	3271.33	3244.66	3203.33	3135.33	3286
GOLD 05FEB2018	BULLISH	29993.7	30035.3	30128.3	29942.33	29900.7	29849.3	29756.3	29952
GOLD 05DEC2017	BULLISH	29984.3	30032.7	30163.7	29901.66	29853.3	29770.7	29639.7	29936
GOLD 05OCT2017	BULLISH	29822	29870	29989	29751	29703	29632	29513	29774
GOLDGUINEA 30NOV2017	BULLISH	23999	23999	23999	23999	23999	23999	23999	23999
GOLDGUINEA 31OCT2017	BULLISH	23937	23969	24037	23901	23869	23833	23765	23905
GOLDGUINEA 29SEP2017	BEARISH	23829	23864	23931	23797	23762	23730	23663	23794

Registered Office:#15-8-1/2/3, 2nd floor, Slddiamber Bazar, Hyderabad - 500012, Telangana State. INDIA.

Corporate Office: #3-6-196/197, Pnme Plaza, 2nd floor, flat No. 204 A & B, H1mayath Nagar, Hyderabad - 500029, Telangana State.INDIA.

Ph:+91-40-64645000,Fax: +91-40-23262166,E-mail:support@basanonline.com,Website:[www.basanonline.com](http://www.basanonline.com)



# BASAN COMMODITY LIMITED

DAILY COMMODITY REPORT 21st Sep 2017

COMMODITIES	TREND	R1	R2	R3	PIVOT POINT	S1	S2	S3	Close
GOLDM 05DEC2017	BULLISH	29950	29995	30100	29890	29845	29785	29680	29905
GOLDM 03NOV2017	BULLISH	29902	29957	30103	29811	29756	29665	29519	29847
GOLDM 05OCT2017	BULLISH	29844.7	29909.3	30066.3	29752.33	29687.7	29595.3	29438.3	29780
GOLDPETAL 30NOV2017	BULLISH	2982.66	2989.33	3005.33	2973.33	2966.66	2957.33	2941.33	2976
GOLDPETAL 31OCT2017	BULLISH	2975.33	2979.66	2989.66	2969.66	2965.33	2959.66	2949.66	2971
GOLDPETAL 29SEP2017	BEARISH	2961.33	2968.66	2982.66	2954.66	2947.33	2940.66	2926.66	2954
LEAD 30NOV2017	BULLISH	158.5	158.95	160.1	157.8	157.35	156.65	155.5	158.05
LEAD 31OCT2017	BULLISH	159.06	159.83	161.98	157.68	156.91	155.53	153.38	158.3
LEAD 29SEP2017	BULLISH	158.5	159.3	161.6	157	156.2	154.7	152.4	157.7
LEADMINI 30NOV2017	BULLISH	159.46	160.58	163.28	157.88	156.76	155.18	152.48	158.35
LEADMINI 31OCT2017	BULLISH	159.11	159.93	162.18	157.68	156.86	155.43	153.18	158.3
LEADMINI 29SEP2017	BULLISH	158.7	159.7	162.55	156.85	155.85	154	151.15	157.7
MENTHAOIL 29DEC2017	BEARISH	1214.63	1220.16	1230.06	1210.26	1204.73	1200.36	1190.46	1209.1
MENTHAOIL 30NOV2017	BULLISH	1211.26	1216.63	1230.63	1202.63	1197.26	1188.63	1174.63	1205.9
MENTHAOIL 31OCT2017	BULLISH	1201	1208.2	1228.1	1188.3	1181.1	1168.4	1148.5	1193.8
MENTHAOIL 29SEP2017	BULLISH	1189.6	1199	1222.9	1175.1	1165.7	1151.2	1127.3	1180.2
NATURALGAS 27NOV2017	BEARISH	214.96	216.83	219.73	213.93	212.06	211.03	208.13	213.1
NATURALGAS 26OCT2017	BEARISH	206.06	208.03	211.43	204.63	202.66	201.23	197.83	204.1
NATURALGAS 26SEP2017	BEARISH	202.23	204.16	207.56	200.76	198.83	197.36	193.96	200.3
NICKEL 30NOV2017	BEARISH	740.53	745.76	755.86	735.66	730.43	725.56	715.46	735.3
NICKEL 31OCT2017	BULLISH	742	749.4	766.6	732.2	724.8	715	697.8	734.6
NICKEL 29SEP2017	BULLISH	736.96	744.63	762.13	727.13	719.46	709.63	692.13	729.3
NICKELM 30NOV2017	BULLISH	745.86	751.93	766.53	737.33	731.26	722.73	708.13	739.8
NICKELM 31OCT2017	BULLISH	741.63	749.06	766.06	732.06	724.63	715.06	698.06	734.2
NICKELM 29SEP2017	BULLISH	737.13	744.76	762.46	727.06	719.43	709.36	691.66	729.5
PEPPER 18OCT2017	BULLISH	45423.3	45581.7	46001.7	45161.66	45003.3	44741.7	44321.7	45265
SILVER 05MAR2018	BEARISH	40854	40942	41110	40774	40686	40606	40438	40766
SILVER 05DEC2017	BULLISH	40367	40487	40754	40220	40100	39953	39686	40247
SILVERM 30APR2018	BULLISH	41403	41431	41487	41375	41347	41319	41263	41375
SILVERM 28FEB2018	BULLISH	40966	41097	41400	40794	40663	40491	40188	40835
SILVERM 30NOV2017	BULLISH	40407	40550	40866	40234	40091	39918	39602	40264
SILVERMIC 30APR2018	BEARISH	41403	41540	41778	41302	41165	41064	40826	41266
SILVERMIC 28FEB2018	BULLISH	40951.3	41074.7	41334.7	40814.66	40691.3	40554.7	40294.7	40828
SILVERMIC 30NOV2017	BULLISH	40407.3	40552.7	40860.7	40244.66	40099.3	39936.7	39628.7	40262
ZINC 29DEC2017	BULLISH	202.2	202.2	202.2	202.2	202.2	202.2	202.2	202.2
ZINC 30NOV2017	BULLISH	202.1	202.6	203.6	201.6	201.1	200.6	199.6	201.6
ZINC 31OCT2017	BULLISH	203.36	204.78	208.08	201.48	200.06	198.18	194.88	201.95

Registered Office:#15-8-1/2/3, 2nd floor, Slddiamber Bazar, Hyderabad - 500012, Telangana State. INDIA.

Corporate Office: #3-6-196/197, Pnme Plaza, 2nd floor, flat No. 204 A & B, H1mayath Nagar, Hyderabad - 500029, Telangana State.INDIA.

Ph:+91-40-64645000,Fax: +91-40-23262166,E-mail:support@basanonline.com,Website:[www.basanonline.com](http://www.basanonline.com)



# BASAN COMMODITY LIMITED

DAILY COMMODITY REPORT 21st Sep 2017

COMMODITIES	TREND	R1	R2	R3	PIVOT POINT	S1	S2	S3	Close
ZINC 29SEP2017	BULLISH	203.71	205.23	208.63	201.83	200.31	198.43	195.03	202.2
ZINCMINI 29DEC2017	BULLISH	203.15	203.15	203.15	203.15	203.15	203.15	203.15	203.15
ZINCMINI 30NOV2017	BULLISH	202.68	203.66	205.71	201.61	200.63	199.56	197.51	201.7
ZINCMINI 31OCT2017	BULLISH	203.36	204.83	208.23	201.43	199.96	198.03	194.63	201.9
ZINCMINI 29SEP2017	BULLISH	203.65	205.15	208.5	201.8	200.3	198.45	195.1	202.15

Registered Office:#15-8-1/2/3, 2nd floor, Slddiamber Bazar, Hyderabad - 500012, Telangana State. INDIA.  
Corporate Office: #3-6-196/197, Pnme Plaza, 2nd floor, flat No. 204 A & B, H1mayath Nagar, Hyderabad - 500029, Telangana State.INDIA.  
Ph:+91-40-64645000,Fax: +91-40-23262166,E-mail:support@basanonline.com,Website:[www.basanonline.com](http://www.basanonline.com)