



BASAN COMMODITY LIMITED

DAILY COMMODITY REPORT 14th Sep 2017

GOLD BEARISH

RANGE : 30060 - 29700

What Chart Says :

On Wednesday Oct Gold settled in a weak note at 29886 levels by posting a high of 30058 levels.

For the day trend remains weak and is likely to extend its declines towards 29720 followed by 29550 levels. Any corrective gains can't be ruled out towards 30040 levels

Hold Sells generated at 29999 with stop above 30100 for the price objective of 29720 and 29550 levels.



SILVER WEAK

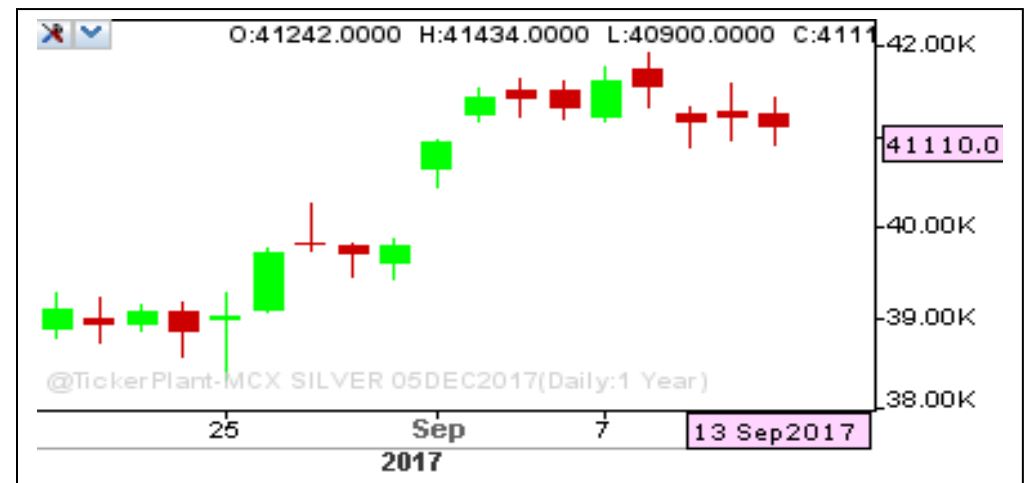
RANGE : 41500 - 40600

What Chart Says :

Dec Silver prices settled at 41110 levels by posting a high of 41434 levels. We are expecting prices could trade sideways to lower towards 40800 followed by 40500 levels till price manages to trade below 41500 levels.

Any sustained holding above 41500 can only attract buying interest.

Sell on rallies with stop above 41500 for the price objective of 40500 and 40000 levels.



Registered Office: #15-8-1/2/3, 2nd floor, Siddhambur Bazar, Hyderabad - 500012, Telangana State. INDIA.

Corporate Office: #3-6-196/197, Pnme Plaza, 2nd floor, flat No. 204 A & B, H1mayath Nagar, Hyderabad - 500029, Telangana State. INDIA.

Ph: +91-40-64645000, Fax: +91-40-23262166, E-mail: support@basanonline.com, Website: www.basanonline.com

CRUDE OIL BULLISH

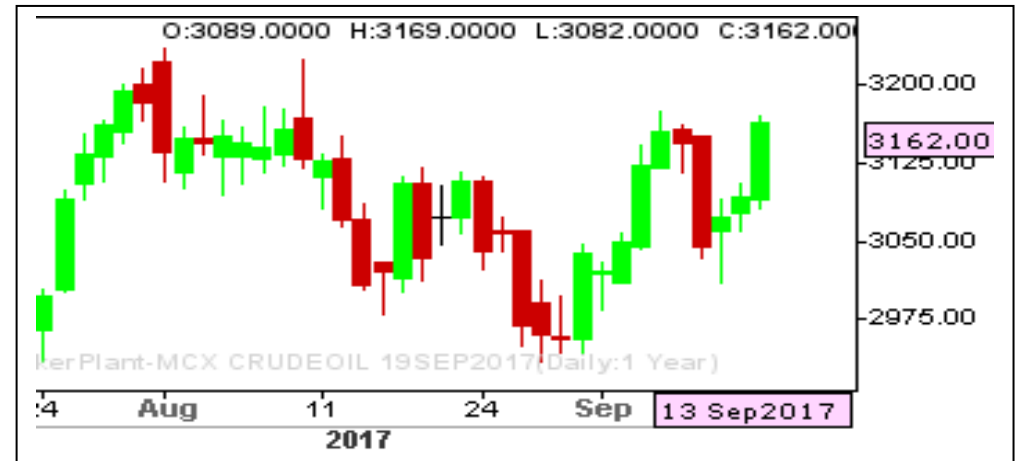
RANGE : 3080 - 3200

What Chart Says :

Sep Crude Oil regained its strength for the third consecutive day on Wednesday and finally settled on positive note at 3162 levels.

Overall trend remains firm till price manages to trade above 3080 levels, targeting 3200 levels.

Awaiting for fresh entry.



ZINC WEAK

RANGE : 196.00 - 191.00

What Chart Says :

Zinc has witnessed selling interest on Wednesday and finished its day at 194.10 levels on weak note.

Till price manages to trade below 196 our bias remains weak, targeting 191 levels.

Awaiting for fresh entry.





BASAN COMMODITY LIMITED

DAILY COMMODITY REPORT 14th Sep 2017

COMMODITIES	TREND	R1	R2	R3	PIVOT POINT	S1	S2	S3	Close
ALUMINI 30NOV2017	BEARISH	135.61	135.78	136.08	135.48	135.31	135.18	134.88	135.45
ALUMINI 31OCT2017	BEARISH	136	136.95	138.7	135.2	134.25	133.45	131.7	135.05
ALUMINI 29SEP2017	BEARISH	135.13	136.16	138.11	134.21	133.18	132.26	130.31	134.1
ALUMINIUM 30NOV2017	BULLISH	137	137.15	137.55	136.75	136.6	136.35	135.95	136.85
ALUMINIUM 31OCT2017	BEARISH	137.25	139.45	143.1	135.8	133.6	132.15	128.5	135.05
ALUMINIUM 29SEP2017	BEARISH	135.13	136.16	138.11	134.21	133.18	132.26	130.31	134.1
CARDAMOM 15DEC2017	BEARISH	1217.93	1228.56	1248.16	1208.96	1198.33	1189.36	1169.76	1207.3
CARDAMOM 15NOV2017	BULLISH	1252.46	1258.73	1273.73	1243.73	1237.46	1228.73	1213.73	1246.2
CARDAMOM 13OCT2017	BEARISH	1291.06	1306.93	1336.83	1277.03	1261.16	1247.13	1217.23	1275.2
CARDAMOM 15SEP2017	BULLISH	1300	1300	1300	1300	1300	1300	1300	1300
COPPER 28FEB2018	BEARISH	433.3	437.75	445.45	430.05	425.6	422.35	414.65	428.85
COPPER 30NOV2017	BEARISH	429.18	434.16	442.76	425.56	420.58	416.96	408.36	424.2
COPPERM 30APR2018	BEARISH	437.81	441.93	449.43	434.43	430.31	426.93	419.43	433.7
COPPERM 28FEB2018	BEARISH	433.78	438.76	448.11	429.41	424.43	420.06	410.71	428.8
COPPERM 30NOV2017	BEARISH	428.88	433.56	441.66	425.46	420.78	417.36	409.26	424.2
COTTON 31JAN2018	BEARISH	18100	18190	18330	18050	17960	17910	17770	18010
COTTON 29DEC2017	BEARISH	18040	18140	18310	17970	17870	17800	17630	17940
COTTON 30NOV2017	BEARISH	18150	18260	18450	18070	17960	17880	17690	18040
COTTON 31OCT2017	BEARISH	18416.7	18483.3	18603.3	18363.33	18296.7	18243.3	18123.3	18350
CPO 29DEC2017	BEARISH	545.63	548.56	553.86	543.26	540.33	537.96	532.66	542.7
CPO 30NOV2017	BULLISH	547.9	550.9	557.1	544.7	541.7	538.5	532.3	544.9
CPO 31OCT2017	BULLISH	549.86	553.33	561.23	545.43	541.96	537.53	529.63	546.4
CPO 29SEP2017	BULLISH	550.3	553.5	561.2	545.8	542.6	538.1	530.4	547.1
CRUDEOIL 19JAN2018	BULLISH	3268	3275	3290	3260	3253	3245	3230	3261
CRUDEOIL 18DEC2017	BULLISH	3246	3254	3271	3237	3229	3220	3203	3238
CRUDEOIL 17NOV2017	BULLISH	3251	3274	3339	3209	3186	3144	3079	3228
CRUDEOIL 18OCT2017	BULLISH	3225	3252	3329	3175	3148	3098	3021	3198
CRUDEOIL 19SEP2017	BULLISH	3193.33	3224.66	3311.66	3137.66	3106.33	3050.66	2963.66	3162
CRUDEOILM 18DEC2017	BULLISH	3265	3295	3360	3230	3200	3165	3100	3235
CRUDEOILM 17NOV2017	BULLISH	3253	3277	3346	3208	3184	3139	3070	3229
CRUDEOILM 18OCT2017	BULLISH	3224.33	3251.66	3328.66	3174.66	3147.33	3097.66	3020.66	3197
CRUDEOILM 19SEP2017	BULLISH	3192.66	3223.33	3309.33	3137.33	3106.66	3051.33	2965.33	3162
GOLD 05FEB2018	BULLISH	30103.3	30109.7	30126.7	30092.66	30086.3	30075.7	30058.7	30097
GOLD 05DEC2017	BEARISH	30166	30298	30528	30068	29936	29838	29608	30034
GOLD 05OCT2017	BEARISH	30022.7	30159.3	30397.3	29921.33	29784.7	29683.3	29445.3	29886
GOLDGUINEA 31OCT2017	BEARISH	24079	24213	24436	23990	23856	23767	23544	23945
GOLDGUINEA 29SEP2017	BEARISH	24069.3	24168.7	24326.7	24010.66	23911.3	23852.7	23694.7	23970

Registered Office:#15-8-1/2/3, 2nd floor, Slddiamber Bazar, Hyderabad - 500012, Telangana State. INDIA.

Corporate Office: #3-6-196/197, Pnme Plaza, 2nd floor, flat No. 204 A & B, H1mayath Nagar, Hyderabad - 500029, Telangana State.INDIA.

Ph:+91-40-64645000,Fax: +91-40-23262166,E-mail:support@basanonline.com,Website:www.basanonline.com



BASAN COMMODITY LIMITED

DAILY COMMODITY REPORT 14th Sep 2017

COMMODITIES	TREND	R1	R2	R3	PIVOT POINT	S1	S2	S3	Close
GOLDM 05DEC2017	BEARISH	30146	30269	30465	30073	29950	29877	29681	30023
GOLDM 03NOV2017	BEARISH	30083.3	30208.7	30425.7	29991.66	29866.3	29774.7	29557.7	29958
GOLDM 05OCT2017	BEARISH	30035	30174	30410	29938	29799	29702	29466	29896
GOLDPETAL 30NOV2017	BULLISH	3006	3016	3039	2993	2983	2970	2947	2996
GOLDPETAL 31OCT2017	BEARISH	2985.66	2993.33	3006.33	2980.33	2972.66	2967.33	2954.33	2978
GOLDPETAL 29SEP2017	BEARISH	2972.66	2980.33	2993.33	2967.33	2959.66	2954.33	2941.33	2965
LEAD 31OCT2017	BULLISH	147.98	148.86	151.11	146.61	145.73	144.36	142.11	147.1
LEAD 29SEP2017	BULLISH	146.96	147.93	150.23	145.63	144.66	143.33	141.03	146
LEADMINI 30NOV2017	BEARISH	147.48	147.91	148.76	147.06	146.63	146.21	145.36	147.05
LEADMINI 31OCT2017	BULLISH	147.91	148.83	151.03	146.63	145.71	144.43	142.23	147
LEADMINI 29SEP2017	BULLISH	146.93	147.91	150.21	145.61	144.63	143.31	141.01	145.95
MENTHAOIL 29DEC2017	BEARISH	1239.46	1241.33	1244.93	1237.73	1235.86	1234.13	1230.53	1237.6
MENTHAOIL 30NOV2017	BULLISH	1233.63	1238.96	1252.26	1225.66	1220.33	1212.36	1199.06	1228.3
MENTHAOIL 31OCT2017	BEARISH	1223.5	1230.7	1244.6	1216.8	1209.6	1202.9	1189	1216.3
MENTHAOIL 29SEP2017	BEARISH	1209.63	1218.06	1233.76	1202.36	1193.93	1186.66	1170.96	1201.2
NATURALGAS 27NOV2017	BULLISH	212.3	213.5	217	210	208.8	206.5	203	211.1
NATURALGAS 26OCT2017	BULLISH	203.03	204.66	209.06	200.26	198.63	195.86	191.46	201.4
NATURALGAS 26SEP2017	BULLISH	198.9	200.7	205.6	195.8	194	190.9	186	197.1
NICKEL 30NOV2017	BEARISH	753.66	769.23	797.73	740.73	725.16	712.23	683.73	738.1
NICKEL 31OCT2017	BEARISH	754.06	772.83	804.43	741.23	722.46	709.63	678.03	735.3
NICKEL 29SEP2017	BEARISH	750.53	770.16	802.96	737.36	717.73	704.56	671.76	730.9
NICKELM 30NOV2017	BEARISH	752.63	767.36	790.86	743.86	729.13	720.36	696.86	737.9
NICKELM 31OCT2017	BEARISH	754.8	774.3	807	741.6	722.1	708.9	676.2	735.3
NICKELM 29SEP2017	BEARISH	749.6	768.5	800.3	736.7	717.8	704.9	673.1	730.7
PEPPER 18OCT2017	BULLISH	45205	45205	45205	45205	45205	45205	45205	45205
PEPPER 20SEP2017	BULLISH	47803.3	48096.7	48786.7	47406.66	47113.3	46716.7	46026.7	47510
SILVER 05JUL2018	BULLISH	42706	42710	42718	42702	42698	42694	42686	42702
SILVER 05MAR2018	BEARISH	41944.3	42225.7	42728.7	41722.66	41441.3	41219.7	40716.7	41663
SILVER 05DEC2017	BEARISH	41396	41682	42216	41148	40862	40614	40080	41110
SILVERM 29JUN2018	BULLISH	43079	43079	43079	43079	43079	43079	43079	43079
SILVERM 28FEB2018	BEARISH	41978.7	42260.3	42765.3	41755.33	41473.7	41250.3	40745.3	41697
SILVERM 30NOV2017	BEARISH	41409.7	41691.3	42214.3	41168.33	40886.7	40645.3	40122.3	41128
SILVERMIC 30APR2018	BEARISH	42402	42642	43034	42250	42010	41858	41466	42162
SILVERMIC 28FEB2018	BEARISH	41974	42237	42717	41757	41494	41277	40797	41711
SILVERMIC 30NOV2017	BEARISH	41438	41749	42329	41169	40858	40589	40009	41127
ZINC 30NOV2017	BEARISH	196.16	196.88	198.28	195.48	194.76	194.08	192.68	195.45
ZINC 31OCT2017	BEARISH	195.63	196.91	199.11	194.71	193.43	192.51	190.31	194.35

Registered Office:#15-8-1/2/3, 2nd floor, Slddiamber Bazar, Hyderabad - 500012, Telangana State. INDIA.

Corporate Office: #3-6-196/197, Pnme Plaza, 2nd floor, flat No. 204 A & B, H1mayath Nagar, Hyderabad - 500029, Telangana State.INDIA.

Ph:+91-40-64645000,Fax: +91-40-23262166,E-mail:support@basanonline.com,Website:www.basanonline.com



BASAN COMMODITY LIMITED

DAILY COMMODITY REPORT 14th Sep 2017

COMMODITIES	TREND	R1	R2	R3	PIVOT POINT	S1	S2	S3	Close
ZINC 29SEP2017	BEARISH	195.48	196.86	199.31	194.41	193.03	191.96	189.51	194.1
ZINCMINI 30NOV2017	BEARISH	196.53	197.56	199.61	195.51	194.48	193.46	191.41	195.5
ZINCMINI 31OCT2017	BEARISH	195.6	196.85	199.05	194.65	193.4	192.45	190.25	194.35
ZINCMINI 29SEP2017	BEARISH	195.46	196.83	199.33	194.33	192.96	191.83	189.33	194.1

Registered Office:#15·8-1/2/3, 2nd floor, Slddiamber Bazar, Hyderabad - 500012, Telangana State. INDIA.

Corporate Office: #3-6-196/197, Pnme Plaza, 2nd floor, flat No. 204 A & B, H1mayath Nagar, Hyderabad - 500029, Telangana State.INDIA.

Ph:+91-40-64645000,Fax: +91-40-23262166,E-mail:support@basanonline.com,Website:www.basanonline.com