



# BASAN COMMODITY LIMITED

DAILY COMMODITY REPORT 08th Sep 2017

## GOLD BULLISH

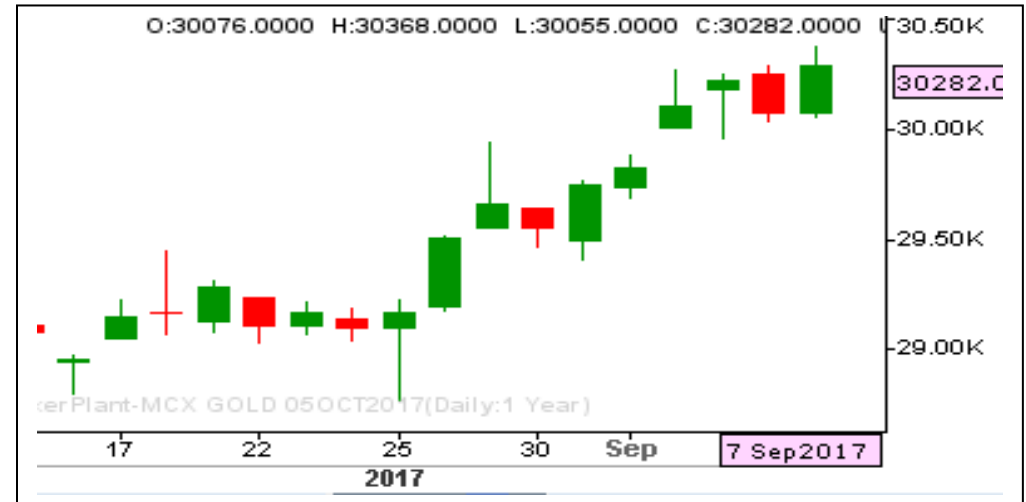
RANGE : 30000 - 30400

### What Chart Says :

On Thursday Oct Gold regained its original bullish momentum and finally settled at 30282 levels by posting a high of 30368 levels.

Gold has turned positive again and is expected to trade sideways to higher towards 30400 followed by 30600 levels. Any intraday declines can't be ruled out towards 30150 levels.

**Till price manages to trade above 30150 be on buying side with stop below 30000 for the price objective of 30400 and 30600 levels.**



## SILVER POSITIVE

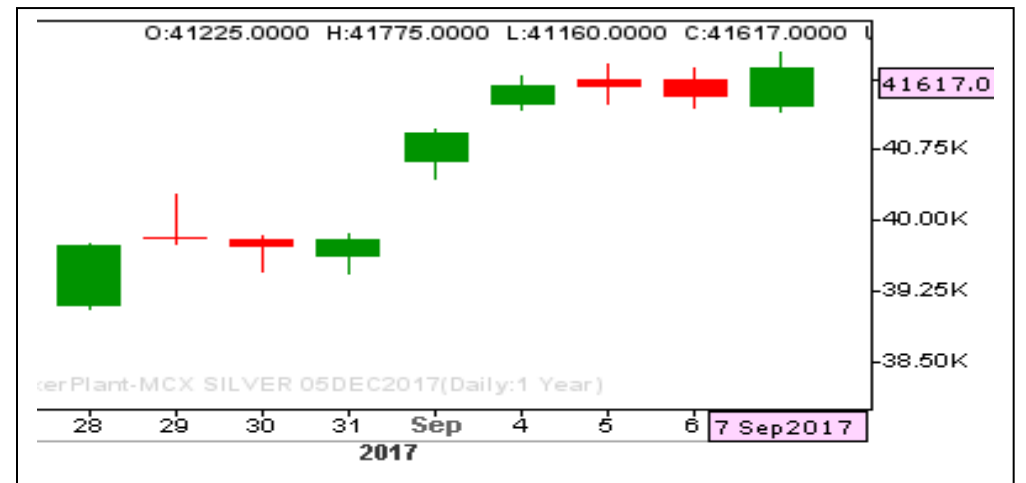
RANGE : 41000 - 42000

### What Chart Says :

Dec Silver prices settled at 41617 levels by posting a high of 41775 levels. As overall trend is looking positive, we are expecting prices could trade sideways to higher towards 42000 followed by 42400 levels till price manages to trade above 41350 levels.

To attract any selling interest price needs to clear 41000 levels on daily close basis.

**Hold longs initiated at 41225 levels with stop below 41000 for 42400 levels.**



Registered Office:#15-8-1/2/3, 2nd floor, Siddhambur Bazar, Hyderabad - 500012, Telangana State. INDIA.

Corporate Office: #3-6-196/197, Pnme Plaza, 2nd floor, flat No. 204 A & B, H1mayath Nagar, Hyderabad - 500029, Telangana State.INDIA.

Ph:+91-40-64645000,Fax: +91-40-23262166,E-mail:support@basanonline.com,Website:[www.basanonline.com](http://www.basanonline.com)

### CRUDE OIL FIRM

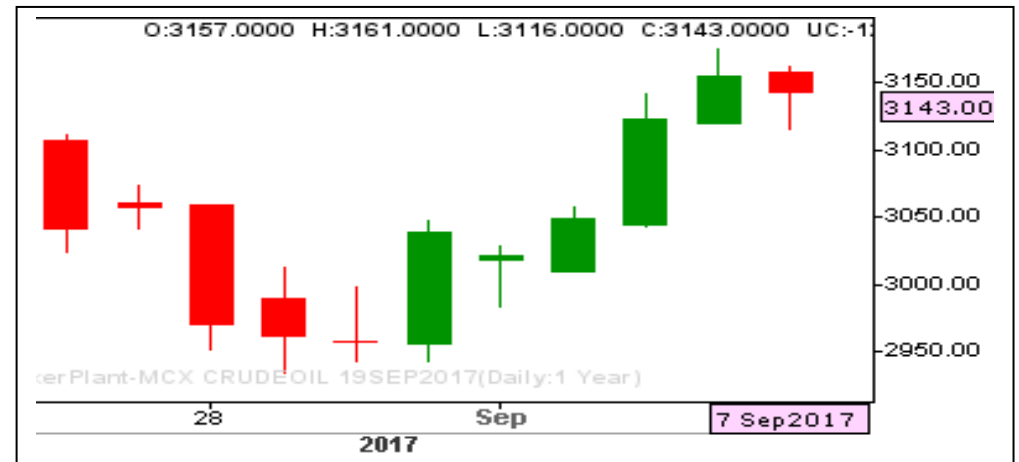
**RANGE : 3100 - 3185**

#### What Chart Says :

Sep Crude Oil ended its day on slightly negative note at 3143 levels by posting a low of 3143 levels.

Price remains firm targeting 3185 levels initial and followed by 3220 levels. Any corrective declines can't be ruled out towards 3120 levels. Strong close below 3110 can change its trend to bearish again.

**Buy on dips for 3185 followed by 3220 levels with stop below 3110.**



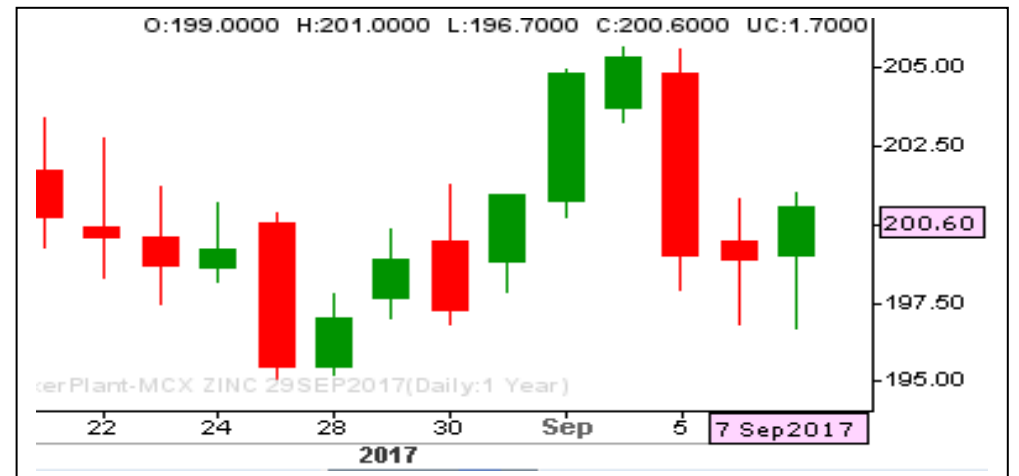
### ZINC MIXED

**RANGE: 201.50 - 196.00**

#### What Chart Says :

Zinc has witnessed some positive momentum after two consecutive day corrective declines. But prices has settled below key levels of 201.50 levels. Price needs to clear 201.50 levels to attract any buying interest again.

Alternatively, any break and close below 196 can attract selling pressure.





# BASAN COMMODITY LIMITED

DAILY COMMODITY REPORT 08th Sep 2017

COMMODITIES	TREND	R1	R2	R3	PIVOT POINT	S1	S2	S3	Close
ALUMINI 30NOV2017	BULLISH	134.2	134.2	134.2	134.2	134.2	134.2	134.2	135.1
ALUMINI 31OCT2017	BULLISH	135.95	136.75	139.05	134.45	133.65	132.15	129.85	134.75
ALUMINI 29SEP2017	BULLISH	135.53	136.41	138.96	133.86	132.98	131.31	128.76	134.15
ALUMINIUM 29DEC2017	BULLISH	135.4	136.35	138.35	134.35	133.4	132.35	130.35	134.45
ALUMINIUM 30NOV2017	BEARISH	134.46	134.68	135.08	134.28	134.06	133.88	133.48	134.25
ALUMINIUM 31OCT2017	BULLISH	135.88	136.61	138.76	134.46	133.73	132.31	130.16	134.7
ALUMINIUM 29SEP2017	BULLISH	135.5	136.35	138.8	133.9	133.05	131.45	129	134.15
CARDAMOM 15JAN2018	BULLISH	1110	1110	1110	1110	1110	1110	1110	1110
CARDAMOM 13OCT2017	BULLISH	1190.6	1197.3	1209.3	1185.3	1178.6	1173.3	1161.3	1190
CARDAMOM 15SEP2017	BULLISH	1206.4	1212	1224.6	1199.4	1193.8	1186.8	1174.2	1210
COPPER 30APR2018	BULLISH	455.73	456.31	457.51	455.11	454.53	453.91	452.71	455.15
COPPER 28FEB2018	BEARISH	454.23	455.86	459.86	451.86	450.23	447.86	443.86	450.3
COPPER 30NOV2017	BEARISH	449.5	451.25	455.5	447	445.25	442.75	438.5	445.55
COPPERM 30APR2018	BEARISH	456.33	457.21	459.01	455.41	454.53	453.61	451.81	454.05
COPPERM 28FEB2018	BEARISH	454.03	455.56	459.31	451.81	450.28	448.06	444.31	450.35
COPPERM 30NOV2017	BEARISH	449.4	451.1	455.2	447	445.3	442.9	438.8	445.6
COTTON 31JAN2018	BEARISH	19126.7	19273.3	19563.3	18983.33	18836.7	18693.3	18403.3	18730
COTTON 29DEC2017	BEARISH	19093.3	19206.7	19476.7	18936.66	18823.3	18666.7	18396.7	18650
COTTON 30NOV2017	BEARISH	19160	19250	19470	19030	18940	18810	18590	18780
COTTON 31OCT2017	BEARISH	19506.7	19603.3	19843.3	19363.33	19266.7	19123.3	18883.3	19100
CPO 29DEC2017	BULLISH	528	528	528	528	528	528	528	528
CPO 30NOV2017	BEARISH	528.43	533.46	541.46	525.46	520.43	517.46	509.46	524.9
CPO 31OCT2017	BULLISH	529.9	536.3	547	525.6	519.2	514.9	504.2	526.4
CPO 29SEP2017	BULLISH	531.43	537.76	548.56	526.96	520.63	516.16	505.36	527.9
CRUDEOIL 19JAN2018	BULLISH	3297.66	3309.33	3335.33	3283.33	3271.66	3257.33	3231.33	3286
CRUDEOIL 18DEC2017	BEARISH	3274	3284	3313	3255	3245	3226	3197	3237
CRUDEOIL 17NOV2017	BEARISH	3246	3261	3300	3222	3207	3183	3144	3215
CRUDEOIL 18OCT2017	BULLISH	3220.33	3246.66	3312.66	3180.66	3154.33	3114.66	3048.66	3184
CRUDEOIL 19SEP2017	BEARISH	3179.33	3203.66	3257.66	3149.66	3125.33	3095.66	3041.66	3147
CRUDEOILM 19JAN2018	BULLISH	3298.33	3317.66	3356.66	3278.66	3259.33	3239.66	3200.66	3279
CRUDEOILM 18DEC2017	BEARISH	3271.33	3284.66	3317.66	3251.66	3238.33	3218.66	3185.66	3249
CRUDEOILM 17NOV2017	BEARISH	3246	3263	3303	3223	3206	3183	3143	3220
CRUDEOILM 18OCT2017	BEARISH	3214	3234	3281	3187	3167	3140	3093	3185
CRUDEOILM 19SEP2017	BEARISH	3178.33	3202.66	3256.66	3148.66	3124.33	3094.66	3040.66	3147
GOLD 05FEB2018	BEARISH	30509.3	30536.7	30597.7	30475.66	30448.3	30414.7	30353.7	30387
GOLD 05DEC2017	BULLISH	30386.3	30520.7	30735.7	30305.66	30171.3	30090.7	29875.7	30405
GOLD 05OCT2017	BULLISH	30229	30383	30634	30132	29978	29881	29630	30268

Registered Office:#15-8-1/2/3, 2nd floor, Slddiamber Bazar, Hyderabad - 500012, Telangana State. INDIA.

Corporate Office: #3-6-196/197, Pnme Plaza, 2nd floor, flat No. 204 A & B, H1mayath Nagar, Hyderabad - 500029, Telangana State.INDIA.

Ph:+91-40-64645000,Fax: +91-40-23262166,E-mail:support@basanonline.com,Website:[www.basanonline.com](http://www.basanonline.com)



# BASAN COMMODITY LIMITED

DAILY COMMODITY REPORT 08th Sep 2017

COMMODITIES	TREND	R1	R2	R3	PIVOT POINT	S1	S2	S3	Close
GOLDGUINEA 31OCT2017	BULLISH	24233.3	24316.7	24466.7	24166.66	24083.3	24016.7	23866.7	24227
GOLDGUINEA 29SEP2017	BEARISH	24456	24708	25118	24298	24046	23888	23478	24275
GOLDM 05DEC2017	BULLISH	30436.7	30542.3	30756.3	30328.33	30222.7	30114.3	29900.3	30387
GOLDM 03NOV2017	BULLISH	30287.7	30432.3	30664.3	30200.33	30055.7	29968.3	29736.3	30320
GOLDM 05OCT2017	BULLISH	30239	30390	30633	30147	29996	29904	29661	30279
GOLDPETAL 30NOV2017	BULLISH	3029	3036	3050	3022	3015	3008	2994	3026
GOLDPETAL 31OCT2017	BULLISH	3024.33	3031.66	3043.66	3019.66	3012.33	3007.66	2995.66	3022
GOLDPETAL 29SEP2017	BULLISH	3026	3036	3053	3019	3009	3002	2985	3020
LEAD 31OCT2017	BEARISH	152.03	153.41	156.46	150.36	148.98	147.31	144.26	149.8
LEAD 29SEP2017	BEARISH	151.21	152.58	155.73	149.43	148.06	146.28	143.13	148.95
LEADMINI 31OCT2017	BEARISH	152	153.35	156.4	150.3	148.95	147.25	144.2	149.75
LEADMINI 29SEP2017	BEARISH	151.21	152.58	155.73	149.43	148.06	146.28	143.13	148.95
MENTHAOIL 30NOV2017	BULLISH	1201.66	1207.23	1217.23	1197.23	1191.66	1187.23	1177.23	1231
MENTHAOIL 31OCT2017	BULLISH	1198.73	1203.46	1216.26	1190.66	1185.93	1177.86	1165.06	1223.4
MENTHAOIL 29SEP2017	BULLISH	1183.46	1188.43	1201.33	1175.53	1170.56	1162.63	1149.73	1207.9
NATURALGAS 27NOV2017	BEARISH	209.33	210.76	214.16	207.36	205.93	203.96	200.56	206.4
NATURALGAS 26OCT2017	BEARISH	199.73	201.46	205.26	197.66	195.93	193.86	190.06	196.7
NATURALGAS 26SEP2017	BEARISH	195	197	201.5	192.5	190.5	188	183.5	191.6
NICKEL 30NOV2017	BULLISH	790.43	796.36	808.66	784.06	778.13	771.76	759.46	785.8
NICKEL 31OCT2017	BULLISH	793.76	800.93	820.83	781.03	773.86	761.13	741.23	783.5
NICKEL 29SEP2017	BULLISH	789.6	796.8	816.9	776.7	769.5	756.6	736.5	779
NICKELM 30NOV2017	BULLISH	792.8	799.6	815.3	783.9	777.1	768.2	752.5	788.8
NICKELM 31OCT2017	BULLISH	794	801.2	821.2	781.2	774	761.2	741.2	783
NICKELM 29SEP2017	BULLISH	789.83	797.26	817.76	776.76	769.33	756.26	735.76	778.7
PEPPER 20SEP2017	BEARISH	49010	49015	49025	49005	49000	48995	48985	48900
SILVER 05MAR2018	BULLISH	42077.7	42309.3	42670.3	41948.33	41716.7	41587.3	41226.3	42142
SILVER 05DEC2017	BULLISH	41560.7	41798.3	42214.3	41382.33	41144.7	40966.3	40550.3	41600
SILVERM 28FEB2018	BULLISH	42151.7	42379.3	42758.3	42000.33	41772.7	41621.3	41242.3	42182
SILVERM 30NOV2017	BULLISH	41562.7	41786.3	42166.3	41406.33	41182.7	41026.3	40646.3	41628
SILVERMIC 30APR2018	BULLISH	42757.3	42943.7	43323.7	42563.66	42377.3	42183.7	41803.7	42743
SILVERMIC 28FEB2018	BULLISH	42152.3	42384.7	42771.7	41997.66	41765.3	41610.7	41223.7	42203
SILVERMIC 30NOV2017	BULLISH	41566.3	41790.7	42175.7	41405.66	41181.3	41020.7	40635.7	41625
ZINC 29DEC2017	BULLISH	200.05	200.9	202.6	199.2	198.35	197.5	195.8	199.2
ZINC 30NOV2017	BULLISH	201.03	202.21	204.46	199.96	198.78	197.71	195.46	201.1
ZINC 31OCT2017	BULLISH	201.11	202.93	206.48	199.38	197.56	195.83	192.28	200.9
ZINC 29SEP2017	BULLISH	200.88	202.86	206.86	198.86	196.88	194.86	190.86	200.5
ZINCMINI 30NOV2017	BULLISH	199.95	200.9	202.65	199.15	198.2	197.4	195.65	201

Registered Office:#15-8-1/2/3, 2nd floor, Slldiamber Bazar, Hyderabad - 500012, Telangana State. INDIA.

Corporate Office: #3-6-196/197, Pnme Plaza, 2nd floor, flat No. 204 A & B, H1mayath Nagar, Hyderabad - 500029, Telangana State.INDIA.

Ph:+91-40-64645000,Fax: +91-40-23262166,E-mail:support@basanonline.com,Website:[www.basanonline.com](http://www.basanonline.com)



# BASAN COMMODITY LIMITED

DAILY COMMODITY REPORT 08th Sep 2017

COMMODITIES	TREND	R1	R2	R3	PIVOT POINT	S1	S2	S3	Close
ZINCMINI 31OCT2017	BULLISH	201.23	203.16	207.06	199.26	197.33	195.36	191.46	200.75
ZINCMINI 29SEP2017	BULLISH	200.93	202.96	207.16	198.76	196.73	194.56	190.36	200.5

Registered Office:#15-8-1/2/3, 2nd floor, Slldiamber Bazar, Hyderabad - 500012, Telangana State. INDIA.  
Corporate Office: #3-6-196/197, Pnme Plaza, 2nd floor, flat No. 204 A & B, H1mayath Nagar, Hyderabad - 500029, Telangana State.INDIA.  
Ph:+91-40-64645000,Fax: +91-40-23262166,E-mail:support@basanonline.com,Website:[www.basanonline.com](http://www.basanonline.com)