



BASAN COMMODITY LIMITED

DAILY COMMODITY REPORT 04th Sep 2017

GOLD BULLISH

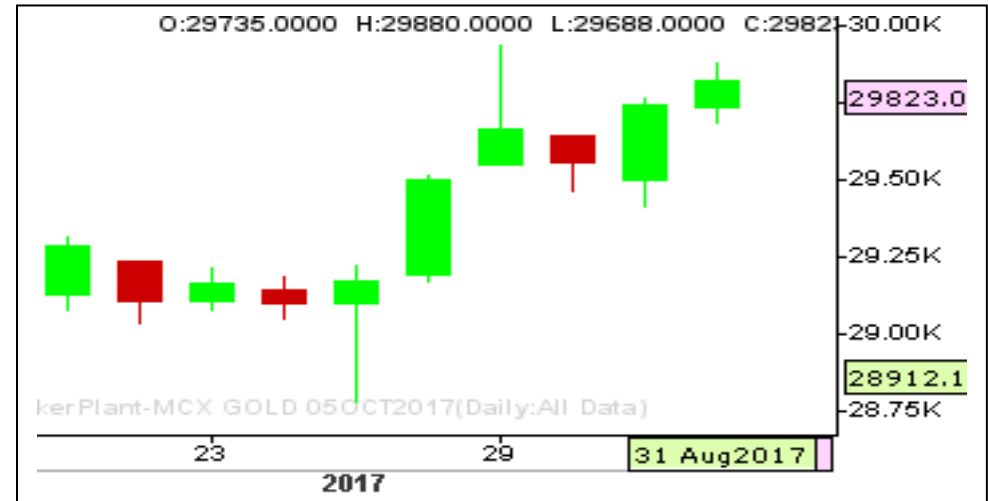
RANGE : 29680 - 30400

What Chart Says :

On Friday Oct Gold witnessed positive momentum and settled at 29823 levels by posting a low of 29688 levels.

Overall trend remains firm till price manages to trade above 29600 levels. For the day prices could open gap up at 30000 levels and continue its gains towards 30200 followed by 30400 levels. Any strong close below 29600 can change our bias.

Hold Longs initiated at 29500 for the targets of 30200 with stop below 29300.



SILVER POSITIVE

RANGE : 40400 - 41500

What Chart Says :

Sep Silver prices settled at 40926 levels by posting a low of 40444 levels. As overall trend is looking positive we are expecting prices could trade sideways to higher towards 41800 followed by 42400 levels.

To attract any selling interest price needs to clear 40400 levels on daily close basis.



Registered Office: #15-8-1/2/3, 2nd floor, Siddhambur Bazar, Hyderabad - 500012, Telangana State. INDIA.

Corporate Office: #3-6-196/197, Pnme Plaza, 2nd floor, flat No. 204 A & B, H1mayath Nagar, Hyderabad - 500029, Telangana State. INDIA.

Ph: +91-40-64645000, Fax: +91-40-23262166, E-mail: support@basanonline.com, Website: www.basanonline.com



BASAN COMMODITY LIMITED

DAILY COMMODITY REPORT 04th Sep 2017

CRUDE OIL FIRM

RANGE : 2975 - 3100

What Chart Says :

Sep Crude Oil ended its day at 3021 levels below key resistance zone of 3050-3040.

Prices needs to clear 3050 levels to attract any additional gains and to continue its bullish trend.

Any breakout failure of 3050 can put some pressure on prices again.



ZINC SIDEWAYS

RANGE : 195 - 201.50

What Chart Says :

On Friday Zinc rallied and settled at 204.80 on very strong note.

Zinc prices turned firm and is likely to extend its gains towards 210 followed by 215 levels in near term.

Any break and close below 199.50 can change our bullish bias.

Our targets almost attained 205 for the longs initiated at 201.50 levels.



Registered Office:#15-8-1/2/3, 2nd floor, Sliddiamber Bazar, Hyderabad - 500012, Telangana State. INDIA.

Corporate Office: #3-6-196/197, Pnme Plaza, 2nd floor, flat No. 204 A & B, H1mayath Nagar, Hyderabad - 500029, Telangana State.INDIA.

Ph:+91-40-64645000,Fax: +91-40-23262166,E-mail:support@basanonline.com,Website:www.basanonline.com



BASAN COMMODITY LIMITED

DAILY COMMODITY REPORT 04th Sep 2017

COMMODITIES	TREND	R1	R2	R3	PIVOT POINT	S1	S2	S3	Close
ALUMINI 31OCT2017	BULLISH	137.36	138.18	140.08	136.28	135.46	134.38	132.48	136.55
ALUMINI 29SEP2017	BULLISH	136.76	137.48	139.08	135.88	135.16	134.28	132.68	136.05
ALUMINIUM 31OCT2017	BULLISH	137.18	137.81	139.16	136.46	135.83	135.11	133.76	136.55
ALUMINIUM 29SEP2017	BULLISH	136.73	137.41	138.96	135.86	135.18	134.31	132.76	136.05
CARDAMOM 15DEC2017	BULLISH	1140	1140	1140	1140	1140	1140	1140	1140
CARDAMOM 15NOV2017	BULLISH	1160.13	1162.56	1167.56	1157.56	1155.13	1152.56	1147.56	1157.7
CARDAMOM 13OCT2017	BULLISH	1185.96	1193.03	1207.43	1178.63	1171.56	1164.23	1149.83	1178.9
CARDAMOM 15SEP2017	BEARISH	1217.4	1225.7	1240.7	1210.7	1202.4	1195.7	1180.7	1209.1
COPPER 28FEB2018	BULLISH	448.38	449.71	453.56	445.86	444.53	442.01	438.16	447.05
COPPER 30NOV2017	BULLISH	443.45	444.95	449.15	440.75	439.25	436.55	432.35	441.95
COPPERM 28FEB2018	BULLISH	448.5	449.95	453.95	445.95	444.5	441.95	437.95	447.05
COPPERM 30NOV2017	BULLISH	443.5	445	449.2	440.8	439.3	436.6	432.4	442
COTTON 31JAN2018	BULLISH	18363.3	18406.7	18506.7	18306.66	18263.3	18206.7	18106.7	18320
COTTON 29DEC2017	BULLISH	18346.7	18403.3	18563.3	18243.33	18186.7	18083.3	17923.3	18290
COTTON 30NOV2017	BULLISH	18406.7	18463.3	18623.3	18303.33	18246.7	18143.3	17983.3	18350
COTTON 31OCT2017	BULLISH	18840	18920	19130	18710	18630	18500	18290	18760
CPO 30NOV2017	BULLISH	520.2	521.3	523.5	519.1	518	516.9	514.7	519.1
CPO 31OCT2017	BULLISH	521.86	523.23	526.73	519.73	518.36	516.23	512.73	520.5
CPO 29SEP2017	BULLISH	521.8	522.9	525.9	519.9	518.8	516.9	513.9	520.7
CRUDEOIL 18DEC2017	BULLISH	3156	3156	3156	3156	3156	3156	3156	3156
CRUDEOIL 17NOV2017	BULLISH	3132.33	3145.66	3172.66	3118.66	3105.33	3091.66	3064.66	3119
CRUDEOIL 18OCT2017	BULLISH	3093	3109	3146	3072	3056	3035	2998	3077
CRUDEOIL 19SEP2017	BULLISH	3038.66	3056.33	3101.33	3011.33	2993.66	2966.33	2921.33	3021
CRUDEOILM 18DEC2017	BULLISH	3160	3164	3173	3155	3151	3146	3137	3156
CRUDEOILM 17NOV2017	BULLISH	3134.33	3149.66	3180.66	3118.66	3103.33	3087.66	3056.66	3119
CRUDEOILM 18OCT2017	BULLISH	3092	3108	3145	3071	3055	3034	2997	3076
CRUDEOILM 19SEP2017	BULLISH	3038.33	3056.66	3101.66	3011.66	2993.33	2966.66	2921.66	3020
GOLD 05FEB2018	BULLISH	30082	30103	30145	30061	30040	30019	29977	30061
GOLD 05DEC2017	BULLISH	30074.7	30161.3	30362.3	29960.33	29873.7	29759.3	29558.3	29988
GOLD 05OCT2017	BULLISH	29906	29989	30181	29797	29714	29605	29413	29823
GOLDGUINEA 31OCT2017	BULLISH	24009.7	24097.3	24287.3	23907.33	23819.7	23717.3	23527.3	23922
GOLDGUINEA 29SEP2017	BULLISH	23987.7	24051.3	24216.3	23886.33	23822.7	23721.3	23556.3	23924
GOLDM 03NOV2017	BULLISH	29958	30028	30206	29850	29780	29672	29494	29888
GOLDM 05OCT2017	BULLISH	29904.7	29983.3	30164.3	29802.33	29723.7	29621.3	29440.3	29826
GOLDM 05SEP2017	BEARISH	29929	30070	30340	29800	29659	29530	29260	29788
GOLDPETAL 30NOV2017	BULLISH	2993.66	3003.33	3026.33	2980.33	2970.66	2957.33	2934.33	2984
GOLDPETAL 31OCT2017	BULLISH	3000.66	3008.33	3029.33	2987.33	2979.66	2966.33	2945.33	2993

Registered Office:#15-8-1/2/3, 2nd floor, Slddiamber Bazar, Hyderabad - 500012, Telangana State. INDIA.

Corporate Office: #3-6-196/197, Pnme Plaza, 2nd floor, flat No. 204 A & B, H1mayath Nagar, Hyderabad - 500029, Telangana State.INDIA.

Ph:+91-40-64645000,Fax: +91-40-23262166,E-mail:support@basanonline.com,Website:www.basanonline.com



BASAN COMMODITY LIMITED

DAILY COMMODITY REPORT 04th Sep 2017

COMMODITIES	TREND	R1	R2	R3	PIVOT POINT	S1	S2	S3	Close
GOLDPETAL 29SEP2017	BULLISH	3007.66	3019.33	3050.33	2988.33	2976.66	2957.33	2926.33	2996
LEAD 31OCT2017	BULLISH	154.1	154.95	156.65	153.25	152.4	151.55	149.85	153.25
LEAD 29SEP2017	BULLISH	153.61	154.58	156.53	152.63	151.66	150.68	148.73	152.65
LEADMINI 31OCT2017	BULLISH	154.18	155.11	157.01	153.21	152.28	151.31	149.41	153.25
LEADMINI 29SEP2017	BULLISH	153.75	154.85	157.05	152.65	151.55	150.45	148.25	152.65
MENTHAOIL 30NOV2017	BEARISH	1234.5	1239.6	1249.3	1229.9	1224.8	1220.2	1210.5	1229.4
MENTHAOIL 31OCT2017	BEARISH	1225.83	1234.66	1251.66	1217.66	1208.83	1200.66	1183.66	1217
MENTHAOIL 29SEP2017	BEARISH	1211.66	1220.53	1237.73	1203.33	1194.46	1186.13	1168.93	1202.8
NATURALGAS 27NOV2017	BULLISH	211.33	212.76	216.46	209.06	207.63	205.36	201.66	209.9
NATURALGAS 26OCT2017	BULLISH	203.56	205.53	210.93	200.13	198.16	194.73	189.33	201.6
NATURALGAS 26SEP2017	BULLISH	198.96	201.03	206.43	195.63	193.56	190.23	184.83	196.9
NICKEL 30NOV2017	BEARISH	773.26	775.63	779.63	771.63	769.26	767.63	763.63	770.9
NICKEL 31OCT2017	BULLISH	785.83	793.26	814.06	772.46	765.03	751.66	730.86	778.4
NICKEL 29SEP2017	BULLISH	781.66	789.53	810.93	768.13	760.26	746.73	725.33	773.8
NICKELM 31OCT2017	BULLISH	786.63	794.96	817.26	772.66	764.33	750.36	728.06	778.3
NICKELM 29SEP2017	BULLISH	783	792.3	818.1	766.5	757.2	740.7	714.9	773.7
PEPPER 18OCT2017	BULLISH	48100	48195	48385	48005	47910	47815	47625	48005
PEPPER 20SEP2017	BULLISH	49020	49110	49310	48910	48820	48710	48510	48930
SILVER 05MAR2018	BULLISH	41736.7	41917.3	42405.3	41429.33	41248.7	40941.3	40453.3	41556
SILVER 05DEC2017	BULLISH	41116	41306	41832	40780	40590	40254	39728	40926
SILVER 05SEP2017	BULLISH	40220	40419	40933	39905	39706	39391	38877	40021
SILVERM 30APR2018	BULLISH	42083	42083	42083	42083	42083	42083	42083	42083
SILVERM 28FEB2018	BULLISH	41729.3	41907.7	42413.7	41401.66	41223.3	40895.7	40389.7	41551
SILVERM 30NOV2017	BULLISH	41146.3	41343.7	41884.7	40802.66	40605.3	40261.7	39720.7	40949
SILVERMIC 30APR2018	BULLISH	42072.7	42286.3	42736.3	41836.33	41622.7	41386.3	40936.3	41859
SILVERMIC 28FEB2018	BULLISH	41718.3	41887.7	42364.7	41410.66	41241.3	40933.7	40456.7	41549
SILVERMIC 30NOV2017	BULLISH	41141.3	41334.7	41863.7	40805.66	40612.3	40276.7	39747.7	40948
ZINC 30NOV2017	BULLISH	206.26	207.98	212.13	203.83	202.11	199.68	195.53	204.55
ZINC 31OCT2017	BULLISH	206.76	208.33	212.88	203.78	202.21	199.23	194.68	205.2
ZINC 29SEP2017	BULLISH	206.41	208.03	212.73	203.33	201.71	198.63	193.93	204.8
ZINCMINI 29DEC2017	BULLISH	202.7	202.95	203.55	202.35	202.1	201.75	201.15	202.45
ZINCMINI 31OCT2017	BULLISH	206.73	208.31	212.91	203.71	202.13	199.11	194.51	205.15
ZINCMINI 29SEP2017	BULLISH	206.41	208.03	212.73	203.33	201.71	198.63	193.93	204.8

Registered Office:#15-8-1/2/3, 2nd floor, Slldiamber Bazar, Hyderabad - 500012, Telangana State. INDIA.

Corporate Office: #3-6-196/197, Pnme Plaza, 2nd floor, flat No. 204 A & B, H1mayath Nagar, Hyderabad - 500029, Telangana State.INDIA.

Ph:+91-40-64645000,Fax: +91-40-23262166,E-mail:support@basanonline.com,Website:www.basanonline.com