



BASAN COMMODITY LIMITED

DAILY COMMODITY REPORT 30th Aug 2017

GOLD BULLISH

RANGE : 29300 - 29800

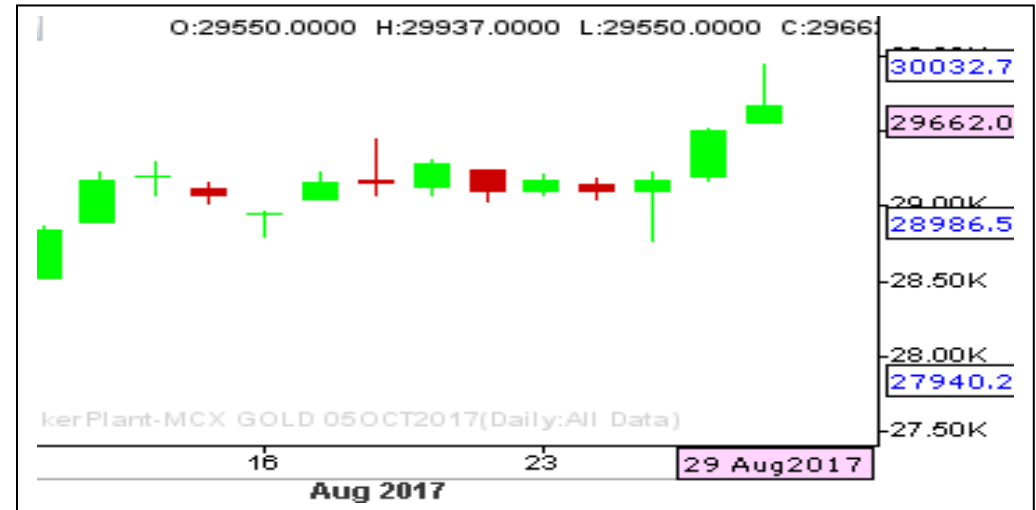
What Chart Says :

Oct Gold rallied on second consecutive day on Tuesday to settle at 29662 levels by posting a high of 29937, leaving room for further gains.

For the day trend remains firm and is likely to trade sideways to higher towards 29900 followed by 30030 levels by retesting 29550 levels down.

Alternatively, any break and close below 29500 can change our bullish bias.

Buy on dips with stop below 29300 for the price objective of 29900



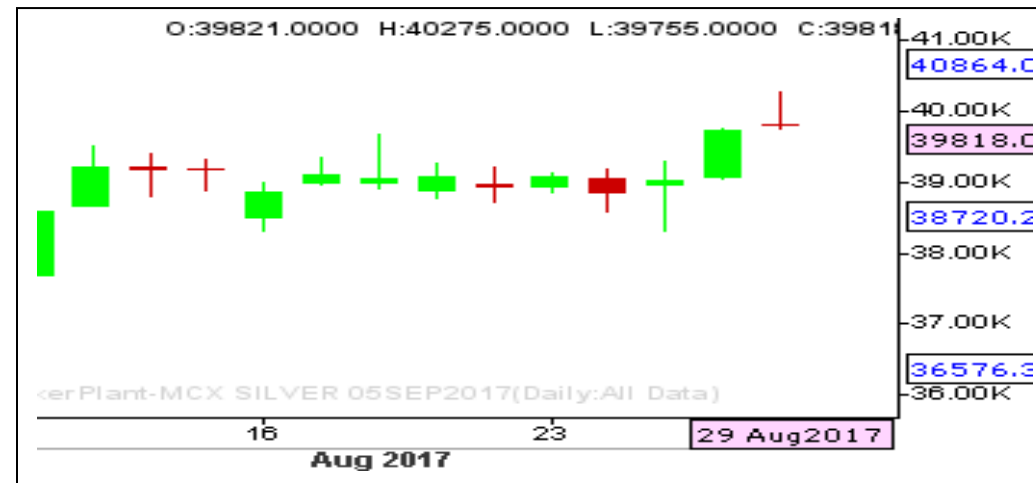
SILVER POSITIVE

RANGE : 39500 - 40500

What Chart Says :

Sep Silver prices has turned positive and settled at 39818 levels on Tuesday. Strong close above key 39680 levels for the second consecutive day had confirmed its trend to bullish for the near future. Till price manages to trade above 39660 levels our bias remains firm, targeting 40660 levels.

For the day prices could trade sideways to higher towards 40250 followed by 40500 levels by testing 39660 levels or 39300 levels down.



Registered Office: #15-8-1/2/3, 2nd floor, Siddhambur Bazar, Hyderabad - 500012, Telangana State. INDIA.

Corporate Office: #3-6-196/197, Pnme Plaza, 2nd floor, flat No. 204 A & B, H1mayath Nagar, Hyderabad - 500029, Telangana State. INDIA.

Ph: +91-40-64645000, Fax: +91-40-23262166, E-mail: support@basanonline.com, Website: www.basanonline.com



BASAN COMMODITY LIMITED

DAILY COMMODITY REPORT 30th Aug 2017

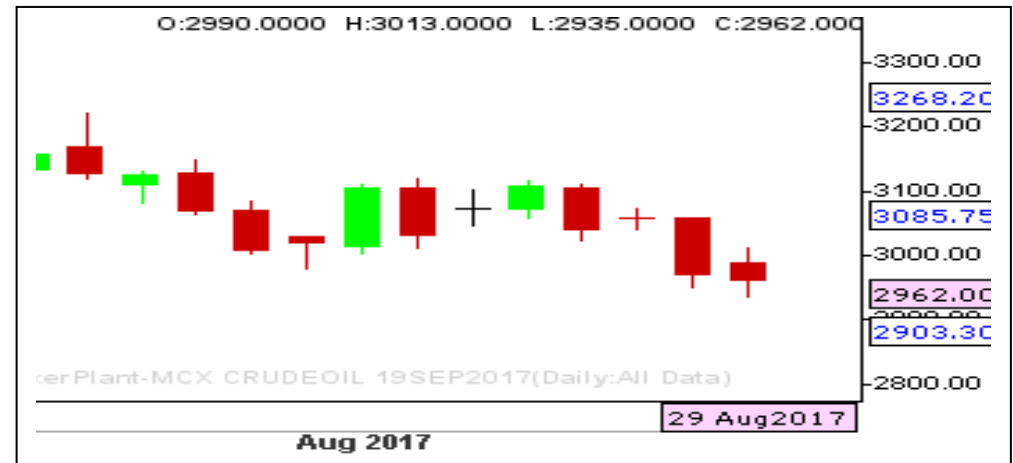
CRUDE OIL WEAK

RANGE : 3020 - 2900

What Chart Says :

Aug Crude Oil plunged as expected to settle at 2962 levels. For the day trend remains weak and is likely to extend its declines towards 2940 followed by 2900 levels.

Any corrective gains can't be ruled out towards 2981 or 3000 levels. Alternatively any strong close above 3020 can change our bearish bias.



ZINC SIDEWAYS

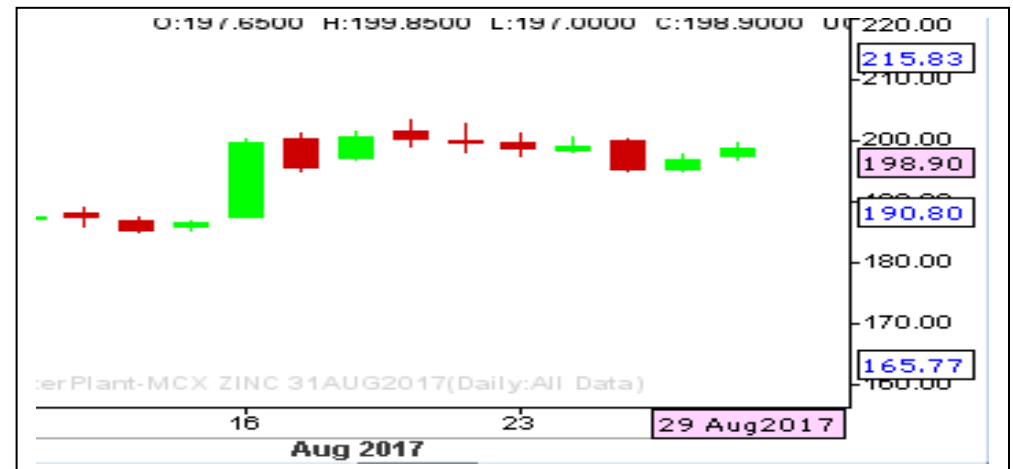
RANGE : 195 - 201.50

What Chart Says :

Zinc prices has been struggling to break and close over key 201.50 levels for the past couple of weeks.

Aug Zinc prices has been trading in range between 195 - 201.50 levels. To attract any additional gains price needs to clear 201.50 levels. At the same time price can't breach 195 to continue its bullish trend.

Any strong close below 195 only can change our bullish bias.



Registered Office:#15-8-1/2/3, 2nd floor, Sliddiamber Bazar, Hyderabad - 500012, Telangana State. INDIA.

Corporate Office: #3-6-196/197, Pnme Plaza, 2nd floor, flat No. 204 A & B, H1mayath Nagar, Hyderabad - 500029, Telangana State.INDIA.

Ph:+91-40-64645000,Fax: +91-40-23262166,E-mail:support@basanonline.com,Website:www.basanonline.com



BASAN COMMODITY LIMITED

DAILY COMMODITY REPORT 30th Aug 2017

| COMMODITIES | TREND | R1 | R2 | R3 | PIVOT POINT | S1 | S2 | S3 | Close |
|---------------------|---------|---------|---------|---------|-------------|---------|---------|---------|--------|
| ALUMINI 31OCT2017 | BULLISH | 133.26 | 133.53 | 134.03 | 133.03 | 132.76 | 132.53 | 132.03 | 134.15 |
| ALUMINI 29SEP2017 | BULLISH | 132.88 | 133.21 | 134.01 | 132.41 | 132.08 | 131.61 | 130.81 | 133.5 |
| ALUMINI 31AUG2017 | BULLISH | 132.43 | 132.86 | 134.06 | 131.66 | 131.23 | 130.46 | 129.26 | 132.95 |
| ALUMINIUM 29SEP2017 | BULLISH | 132.96 | 133.33 | 134.18 | 132.48 | 132.11 | 131.63 | 130.78 | 133.55 |
| ALUMINIUM 31AUG2017 | BULLISH | 132.46 | 132.98 | 134.38 | 131.58 | 131.06 | 130.18 | 128.78 | 132.95 |
| CARDAMOM 15DEC2017 | BEARISH | 1111.4 | 1113.6 | 1119.4 | 1107.8 | 1105.6 | 1102 | 1096.2 | 1103.4 |
| CARDAMOM 15NOV2017 | BEARISH | 1127.8 | 1136.3 | 1151.2 | 1121.4 | 1112.9 | 1106.5 | 1091.6 | 1110.6 |
| CARDAMOM 13OCT2017 | BULLISH | 1125.96 | 1136.33 | 1153.03 | 1119.63 | 1109.26 | 1102.93 | 1086.23 | 1137.8 |
| CARDAMOM 15SEP2017 | BULLISH | 1147.06 | 1154.13 | 1168.33 | 1139.93 | 1132.86 | 1125.73 | 1111.53 | 1170.4 |
| COPPER 28FEB2018 | BULLISH | 444.13 | 445.31 | 447.56 | 443.06 | 441.88 | 440.81 | 438.56 | 445.4 |
| COPPER 30NOV2017 | BULLISH | 439.53 | 442.46 | 448.16 | 436.76 | 433.83 | 431.06 | 425.36 | 440 |
| COPPER 31AUG2017 | BULLISH | 434.2 | 437.4 | 443.1 | 431.7 | 428.5 | 426 | 420.3 | 434 |
| COPPERM 28FEB2018 | BULLISH | 443.6 | 446 | 450.4 | 441.6 | 439.2 | 437.2 | 432.8 | 444.4 |
| COPPERM 30NOV2017 | BULLISH | 439.43 | 442.21 | 447.71 | 436.71 | 433.93 | 431.21 | 425.71 | 440.1 |
| COPPERM 31AUG2017 | BULLISH | 434.2 | 437.35 | 443.45 | 431.25 | 428.1 | 425.15 | 419.05 | 434.05 |
| COTTON 31JAN2018 | BULLISH | 18270 | 18310 | 18410 | 18210 | 18170 | 18110 | 18010 | 18260 |
| COTTON 29DEC2017 | BULLISH | 18193.3 | 18296.7 | 18546.7 | 18046.66 | 17943.3 | 17796.7 | 17546.7 | 18180 |
| COTTON 30NOV2017 | BULLISH | 18253.3 | 18366.7 | 18636.7 | 18096.66 | 17983.3 | 17826.7 | 17556.7 | 18240 |
| COTTON 31OCT2017 | BULLISH | 18756.7 | 18883.3 | 19233.3 | 18533.33 | 18406.7 | 18183.3 | 17833.3 | 18710 |
| CPO 30NOV2017 | BEARISH | 516.73 | 518.36 | 521.36 | 515.36 | 513.73 | 512.36 | 509.36 | 512.2 |
| CPO 31OCT2017 | BEARISH | 518.2 | 520.9 | 526 | 515.8 | 513.1 | 510.7 | 505.6 | 511.9 |
| CPO 29SEP2017 | BEARISH | 518.36 | 521.53 | 527.23 | 515.83 | 512.66 | 510.13 | 504.43 | 512 |
| CPO 31AUG2017 | BEARISH | 521.6 | 523.3 | 526.3 | 520.3 | 518.6 | 517.3 | 514.3 | 517 |
| CRUDEOIL 16FEB2018 | BEARISH | 3125.33 | 3125.66 | 3126.66 | 3124.66 | 3124.33 | 3123.66 | 3122.66 | 3114 |
| CRUDEOIL 19JAN2018 | BULLISH | 3095.33 | 3095.66 | 3096.66 | 3094.66 | 3094.33 | 3093.66 | 3092.66 | 3100 |
| CRUDEOIL 18DEC2017 | BEARISH | 3144 | 3167 | 3224 | 3110 | 3087 | 3053 | 2996 | 3069 |
| CRUDEOIL 17NOV2017 | BEARISH | 3092.33 | 3145.66 | 3228.66 | 3062.66 | 3009.33 | 2979.66 | 2896.66 | 3044 |
| CRUDEOIL 18OCT2017 | BEARISH | 3066.33 | 3125.66 | 3221.66 | 3029.66 | 2970.33 | 2933.66 | 2837.66 | 3008 |
| CRUDEOIL 19SEP2017 | BEARISH | 3035.66 | 3101.33 | 3209.33 | 2993.33 | 2927.66 | 2885.33 | 2777.33 | 2962 |
| CRUDEOILM 19JAN2018 | BULLISH | 3137 | 3137 | 3137 | 3137 | 3137 | 3137 | 3137 | 3137 |
| CRUDEOILM 18DEC2017 | BEARISH | 3128 | 3145 | 3186 | 3104 | 3087 | 3063 | 3022 | 3080 |
| CRUDEOILM 17NOV2017 | BEARISH | 3092.33 | 3146.66 | 3233.66 | 3059.66 | 3005.33 | 2972.66 | 2885.66 | 3047 |
| CRUDEOILM 18OCT2017 | BEARISH | 3066.33 | 3125.66 | 3221.66 | 3029.66 | 2970.33 | 2933.66 | 2837.66 | 3009 |
| CRUDEOILM 19SEP2017 | BEARISH | 3035 | 3100 | 3206 | 2994 | 2929 | 2888 | 2782 | 2961 |
| GOLD 05FEB2018 | BULLISH | 29500 | 29550 | 29653 | 29447 | 29397 | 29344 | 29241 | 29926 |
| GOLD 05DEC2017 | BULLISH | 29713 | 29825 | 30148 | 29502 | 29390 | 29179 | 28856 | 29763 |
| GOLD 05OCT2017 | BULLISH | 29623 | 29743 | 30088 | 29398 | 29278 | 29053 | 28708 | 29662 |

Registered Office:#15-8-1/2/3, 2nd floor, Slddiamber Bazar, Hyderabad - 500012, Telangana State. INDIA.

Corporate Office: #3-6-196/197, Pnme Plaza, 2nd floor, flat No. 204 A & B, H1mayath Nagar, Hyderabad - 500029, Telangana State.INDIA.

Ph:+91-40-64645000,Fax: +91-40-23262166,E-mail:support@basanonline.com,Website:www.basanonline.com



BASAN COMMODITY LIMITED

DAILY COMMODITY REPORT 30th Aug 2017

| COMMODITIES | TREND | R1 | R2 | R3 | PIVOT POINT | S1 | S2 | S3 | Close |
|----------------------|---------|---------|---------|---------|-------------|---------|---------|---------|--------|
| GOLDGUINEA 31OCT2017 | BULLISH | 23430 | 23490 | 23640 | 23340 | 23280 | 23190 | 23040 | 23711 |
| GOLDGUINEA 29SEP2017 | BULLISH | 23383.7 | 23446.3 | 23615.3 | 23277.33 | 23214.7 | 23108.3 | 22939.3 | 23555 |
| GOLDGUINEA 31AUG2017 | BULLISH | 23176.3 | 23250.7 | 23425.7 | 23075.66 | 23001.3 | 22900.7 | 22725.7 | 23473 |
| GOLDM 03NOV2017 | BULLISH | 29649.3 | 29751.7 | 30052.7 | 29450.66 | 29348.3 | 29149.7 | 28848.7 | 29735 |
| GOLDM 05OCT2017 | BULLISH | 29638.7 | 29761.3 | 30113.3 | 29409.33 | 29286.7 | 29057.3 | 28705.3 | 29668 |
| GOLDM 05SEP2017 | BULLISH | 29545 | 29665 | 30010 | 29320 | 29200 | 28975 | 28630 | 29588 |
| GOLDPETAL 30NOV2017 | BULLISH | 2940.33 | 2942.66 | 2947.66 | 2937.66 | 2935.33 | 2932.66 | 2927.66 | 2973 |
| GOLDPETAL 31OCT2017 | BULLISH | 2929.66 | 2933.33 | 2943.33 | 2923.33 | 2919.66 | 2913.33 | 2903.33 | 2949 |
| GOLDPETAL 29SEP2017 | BULLISH | 2921.66 | 2928.33 | 2945.33 | 2911.33 | 2904.66 | 2894.33 | 2877.33 | 2940 |
| GOLDPETAL 31AUG2017 | BULLISH | 2885 | 2893 | 2911 | 2875 | 2867 | 2857 | 2839 | 2917 |
| LEAD 31OCT2017 | BULLISH | 149.61 | 149.93 | 150.63 | 149.23 | 148.91 | 148.53 | 147.83 | 152.4 |
| LEAD 29SEP2017 | BULLISH | 149.5 | 149.95 | 151.15 | 148.75 | 148.3 | 147.55 | 146.35 | 152.3 |
| LEAD 31AUG2017 | BULLISH | 148.5 | 149 | 150.3 | 147.7 | 147.2 | 146.4 | 145.1 | 151.25 |
| LEADMINI 31OCT2017 | BULLISH | 149.56 | 149.88 | 150.48 | 149.28 | 148.96 | 148.68 | 148.08 | 152.9 |
| LEADMINI 29SEP2017 | BULLISH | 149.51 | 150.03 | 151.28 | 148.78 | 148.26 | 147.53 | 146.28 | 152.3 |
| LEADMINI 31AUG2017 | BULLISH | 148.76 | 149.53 | 151.33 | 147.73 | 146.96 | 145.93 | 144.13 | 151.3 |
| MENTHAOIL 30NOV2017 | BEARISH | 1204.86 | 1207.93 | 1215.93 | 1199.93 | 1196.86 | 1191.93 | 1183.93 | 1191.3 |
| MENTHAOIL 31OCT2017 | BULLISH | 1189.53 | 1196.06 | 1207.76 | 1184.36 | 1177.83 | 1172.66 | 1160.96 | 1195.8 |
| MENTHAOIL 29SEP2017 | BULLISH | 1177.43 | 1185.26 | 1199.16 | 1171.36 | 1163.53 | 1157.46 | 1143.56 | 1183.5 |
| MENTHAOIL 31AUG2017 | BULLISH | 1162.76 | 1170.63 | 1184.13 | 1157.13 | 1149.26 | 1143.63 | 1130.13 | 1168.2 |
| NATURALGAS 26OCT2017 | BULLISH | 197.03 | 200.06 | 206.46 | 193.66 | 190.63 | 187.26 | 180.86 | 195.7 |
| NATURALGAS 26SEP2017 | BULLISH | 192.13 | 195.56 | 202.76 | 188.36 | 184.93 | 181.16 | 173.96 | 190.8 |
| NICKEL 30NOV2017 | BULLISH | 757.6 | 760.5 | 766.3 | 754.7 | 751.8 | 748.9 | 743.1 | 754.7 |
| NICKEL 31OCT2017 | BULLISH | 758.13 | 762.66 | 774.86 | 750.46 | 745.93 | 738.26 | 726.06 | 756.4 |
| NICKEL 29SEP2017 | BULLISH | 756.76 | 764.33 | 784.23 | 744.43 | 736.86 | 724.53 | 704.63 | 750.9 |
| NICKEL 31AUG2017 | BULLISH | 754.8 | 764.2 | 789 | 739.4 | 730 | 714.6 | 689.8 | 746.5 |
| NICKELM 30NOV2017 | BULLISH | 750.3 | 750.3 | 750.3 | 750.3 | 750.3 | 750.3 | 750.3 | 750.3 |
| NICKELM 31OCT2017 | BULLISH | 759.83 | 766.16 | 782.66 | 749.66 | 743.33 | 733.16 | 716.66 | 753.3 |
| NICKELM 29SEP2017 | BULLISH | 757.86 | 766.73 | 790.23 | 743.23 | 734.36 | 719.73 | 696.23 | 750.8 |
| NICKELM 31AUG2017 | BULLISH | 755.2 | 764.9 | 791.1 | 738.7 | 729 | 712.5 | 686.3 | 746.5 |
| PEPPER 20SEP2017 | BEARISH | 49200 | 49250 | 49350 | 49150 | 49100 | 49050 | 48950 | 48885 |
| SILVER 05MAR2018 | BULLISH | 40835.3 | 41077.7 | 41583.7 | 40571.66 | 40329.3 | 40065.7 | 39559.7 | 41275 |
| SILVER 05DEC2017 | BULLISH | 40618.7 | 40859.3 | 41560.3 | 40158.33 | 39917.7 | 39457.3 | 38756.3 | 40466 |
| SILVER 05SEP2017 | BULLISH | 39971.3 | 40215.7 | 40915.7 | 39515.66 | 39271.3 | 38815.7 | 38115.7 | 39818 |
| SILVERM 29JUN2018 | BULLISH | 41969.7 | 42205.3 | 42746.3 | 41664.33 | 41428.7 | 41123.3 | 40582.3 | 42148 |
| SILVERM 30APR2018 | BULLISH | 41401 | 41401 | 41401 | 41401 | 41401 | 41401 | 41401 | 41401 |
| SILVERM 28FEB2018 | BULLISH | 41143.3 | 41381.7 | 42007.7 | 40755.66 | 40517.3 | 40129.7 | 39503.7 | 41084 |

Registered Office:#15-8-1/2/3, 2nd floor, Slddiamber Bazar, Hyderabad - 500012, Telangana State. INDIA.

Corporate Office: #3-6-196/197, Pnme Plaza, 2nd floor, flat No. 204 A & B, H1mayath Nagar, Hyderabad - 500029, Telangana State.INDIA.

Ph:+91-40-64645000,Fax: +91-40-23262166,E-mail:support@basanonline.com,Website:www.basanonline.com



BASAN COMMODITY LIMITED

DAILY COMMODITY REPORT 30th Aug 2017

| COMMODITIES | TREND | R1 | R2 | R3 | PIVOT POINT | S1 | S2 | S3 | Close |
|---------------------|---------|---------|---------|---------|-------------|---------|---------|---------|--------|
| SILVERM 30NOV2017 | BULLISH | 40682.3 | 40953.7 | 41708.7 | 40198.66 | 39927.3 | 39443.7 | 38688.7 | 40493 |
| SILVERM 31AUG2017 | BULLISH | 39980.3 | 40227.7 | 40937.7 | 39517.66 | 39270.3 | 38807.7 | 38097.7 | 39817 |
| SILVERMIC 30APR2018 | BULLISH | 40802 | 40802 | 40802 | 40802 | 40802 | 40802 | 40802 | 41469 |
| SILVERMIC 28FEB2018 | BULLISH | 41230.7 | 41489.3 | 42238.3 | 40740.33 | 40481.7 | 39991.3 | 39242.3 | 41103 |
| SILVERMIC 30NOV2017 | BULLISH | 40650 | 40899 | 41623 | 40175 | 39926 | 39451 | 38727 | 40498 |
| SILVERMIC 31AUG2017 | BULLISH | 39982 | 40231 | 40946 | 39516 | 39267 | 38801 | 38086 | 39822 |
| ZINC 30NOV2017 | BULLISH | 197.45 | 197.45 | 197.45 | 197.45 | 197.45 | 197.45 | 197.45 | 199.85 |
| ZINC 31OCT2017 | BULLISH | 198.23 | 198.76 | 199.81 | 197.71 | 197.18 | 196.66 | 195.61 | 199.25 |
| ZINC 29SEP2017 | BULLISH | 198.23 | 199.21 | 201.51 | 196.91 | 195.93 | 194.61 | 192.31 | 199 |
| ZINC 31AUG2017 | BULLISH | 198.16 | 199.28 | 201.88 | 196.68 | 195.56 | 194.08 | 191.48 | 198.9 |
| ZINCMINI 31OCT2017 | BULLISH | 197.85 | 198.3 | 199.35 | 197.25 | 196.8 | 196.2 | 195.15 | 199.3 |
| ZINCMINI 29SEP2017 | BULLISH | 197.95 | 198.7 | 200.45 | 196.95 | 196.2 | 195.2 | 193.45 | 199 |
| ZINCMINI 31AUG2017 | BULLISH | 198.18 | 199.36 | 202.11 | 196.61 | 195.43 | 193.86 | 191.11 | 198.9 |

Registered Office:#15-8-1/2/3, 2nd floor, Sllddiamber Bazar, Hyderabad - 500012, Telangana State. INDIA.

Corporate Office: #3-6-196/197, Pnme Plaza, 2nd floor, flat No. 204 A & B, H1mayath Nagar, Hyderabad - 500029, Telangana State.INDIA.

Ph:+91-40-64645000,Fax: +91-40-23262166,E-mail:support@basanonline.com,Website:www.basanonline.com