



# BASAN COMMODITY LIMITED

DAILY COMMODITY REPORT 29th Aug 2017

## GOLD BULLISH

RANGE : 29300 - 29800

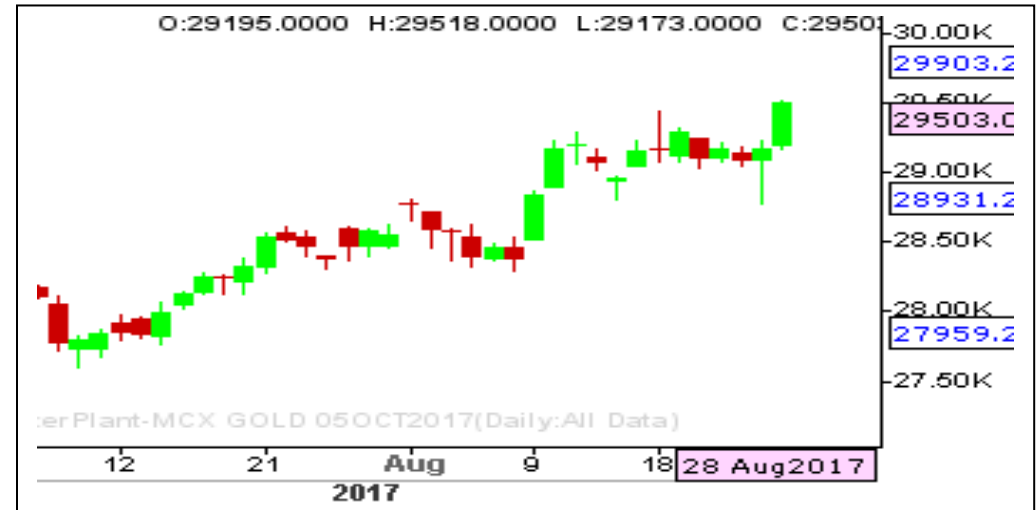
### What Chart Says :

Oct Gold rallied on Monday to settle at 29503 levels above key levels of 29440, leaving room for further gains.

For the day trend remains firm and is likely to trade sideways to higher towards 29600 followed by 29800 levels by retesting 29440 levels down or 29300 levels.

Alternatively, any break and close below 29300 can change our bullish bias.

*Buy on dips with stop below 29300 for the price objective of 29800*



## SILVER POSITIVE

RANGE : 3500 - 39600

### What Chart Says :

Sep Silver prices has turned positive on Monday and settled at 39727 levels. Strong close above key 39680 levels had confirmed its trend to bullish for the near future. Till price manages to trade above 39660 levels our bias remains firm, targeting 40660 levels.

For the day prices could trade sideways to higher towards 40000 followed by 40250 levels by testing 39660 levels or 39300 levels down.

*Stop triggered 39700 for sells initiated at 39300 levels.*



Registered Office: #15-8-1/2/3, 2nd floor, Siddhambhar Bazar, Hyderabad - 500012, Telangana State. INDIA.

Corporate Office: #3-6-196/197, Pnme Plaza, 2nd floor, flat No. 204 A & B, H1mayath Nagar, Hyderabad - 500029, Telangana State. INDIA.

Ph: +91-40-64645000, Fax: +91-40-23262166, E-mail: support@basanonline.com, Website: [www.basanonline.com](http://www.basanonline.com)

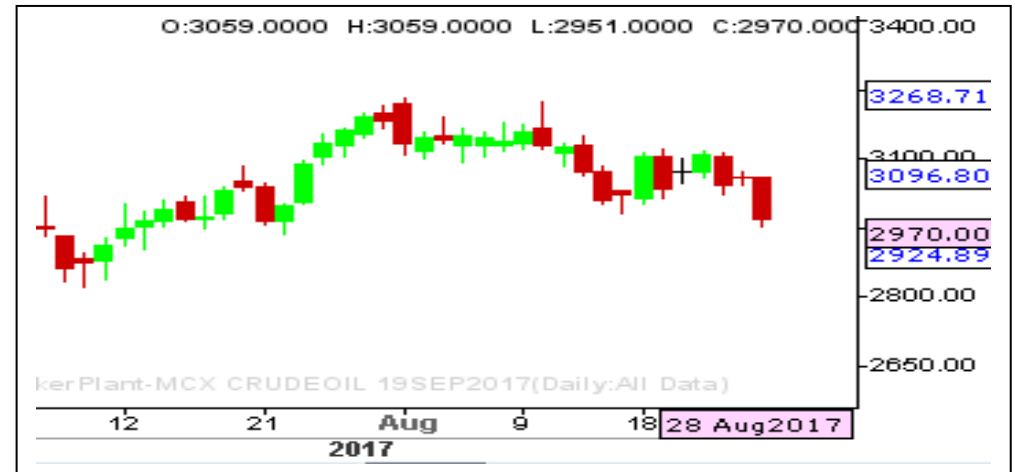
**CRUDE OIL WEAK**

**RANGE : 3020 - 2900**

**What Chart Says :**

Aug Crude Oil plunged on Monday to settle at 2970 levels. For the day trend remains weak and is likely to extend its declines towards 2940 followed by 2900 levels.

Any corrective gains can't be ruled out towards 2981 or 3000 levels. Alternatively any strong close above 3040 can change our bearish bias.



**ZINC SIDEWAYS**

**RANGE : 195 - 201.50**

**What Chart Says :**

Zinc prices has been struggling to break and close over key 201.50 levels for the past couple of weeks.

Aug Zinc prices has been trading in range between 195 - 201.50 levels. To attract any additional gains price needs to clear 201.50 levels. At the same time price can't breach 195 to continue its bullish trend.

Any strong close below 195 only can change our bullish bias.





# BASAN COMMODITY LIMITED

DAILY COMMODITY REPORT 29th Aug 2017

COMMODITIES	TREND	R1	R2	R3	PIVOT POINT	S1	S2	S3	Close
ALUMINI 31OCT2017	BEARISH	133.26	133.53	134.03	133.03	132.76	132.53	132.03	133
ALUMINI 29SEP2017	BULLISH	132.88	133.21	134.01	132.41	132.08	131.61	130.81	132.55
ALUMINI 31AUG2017	BULLISH	132.43	132.86	134.06	131.66	131.23	130.46	129.26	132
ALUMINIUM 29SEP2017	BULLISH	132.96	133.33	134.18	132.48	132.11	131.63	130.78	132.6
ALUMINIUM 31AUG2017	BULLISH	132.46	132.98	134.38	131.58	131.06	130.18	128.78	131.95
CARDAMOM 15DEC2017	BULLISH	1111.4	1113.6	1119.4	1107.8	1105.6	1102	1096.2	1109.2
CARDAMOM 15NOV2017	BEARISH	1127.8	1136.3	1151.2	1121.4	1112.9	1106.5	1091.6	1119.3
CARDAMOM 13OCT2017	BEARISH	1125.96	1136.33	1153.03	1119.63	1109.26	1102.93	1086.23	1115.6
CARDAMOM 15SEP2017	BULLISH	1147.06	1154.13	1168.33	1139.93	1132.86	1125.73	1111.53	1140
COPPER 28FEB2018	BEARISH	444.13	445.31	447.56	443.06	441.88	440.81	438.56	442.95
COPPER 30NOV2017	BEARISH	439.53	442.46	448.16	436.76	433.83	431.06	425.36	436.6
COPPER 31AUG2017	BEARISH	434.2	437.4	443.1	431.7	428.5	426	420.3	431
COPPERM 28FEB2018	BEARISH	443.6	446	450.4	441.6	439.2	437.2	432.8	441.2
COPPERM 30NOV2017	BEARISH	439.43	442.21	447.71	436.71	433.93	431.21	425.71	436.65
COPPERM 31AUG2017	BEARISH	434.2	437.35	443.45	431.25	428.1	425.15	419.05	431.05
COTTON 29DEC2017	BULLISH	18193.3	18296.7	18546.7	18046.66	17943.3	17796.7	17546.7	18090
COTTON 30NOV2017	BULLISH	18253.3	18366.7	18636.7	18096.66	17983.3	17826.7	17556.7	18140
COTTON 31OCT2017	BULLISH	18756.7	18883.3	19233.3	18533.33	18406.7	18183.3	17833.3	18630
CPO 31OCT2017	BEARISH	518.2	520.9	526	515.8	513.1	510.7	505.6	515.5
CPO 29SEP2017	BEARISH	518.36	521.53	527.23	515.83	512.66	510.13	504.43	515.2
CPO 31AUG2017	BEARISH	521.6	523.3	526.3	520.3	518.6	517.3	514.3	519.9
CRUDEOIL 17NOV2017	BEARISH	3092.33	3145.66	3228.66	3062.66	3009.33	2979.66	2896.66	3039
CRUDEOIL 18OCT2017	BEARISH	3066.33	3125.66	3221.66	3029.66	2970.33	2933.66	2837.66	3007
CRUDEOIL 19SEP2017	BEARISH	3035.66	3101.33	3209.33	2993.33	2927.66	2885.33	2777.33	2970
CRUDEOILM 17NOV2017	BEARISH	3092.33	3146.66	3233.66	3059.66	3005.33	2972.66	2885.66	3038
CRUDEOILM 18OCT2017	BEARISH	3066.33	3125.66	3221.66	3029.66	2970.33	2933.66	2837.66	3007
CRUDEOILM 19SEP2017	BEARISH	3035	3100	3206	2994	2929	2888	2782	2970
GOLD 05FEB2018	BULLISH	29500	29550	29653	29447	29397	29344	29241	29450
GOLD 05DEC2017	BULLISH	29713	29825	30148	29502	29390	29179	28856	29601
GOLD 05OCT2017	BULLISH	29623	29743	30088	29398	29278	29053	28708	29503
GOLDGUINEA 29SEP2017	BULLISH	23383.7	23446.3	23615.3	23277.33	23214.7	23108.3	22939.3	23321
GOLDGUINEA 31AUG2017	BULLISH	23176.3	23250.7	23425.7	23075.66	23001.3	22900.7	22725.7	23102
GOLDM 03NOV2017	BULLISH	29649.3	29751.7	30052.7	29450.66	29348.3	29149.7	28848.7	29547
GOLDM 05OCT2017	BULLISH	29638.7	29761.3	30113.3	29409.33	29286.7	29057.3	28705.3	29516
GOLDM 05SEP2017	BULLISH	29545	29665	30010	29320	29200	28975	28630	29425
GOLDPETAL 30NOV2017	BULLISH	2940.33	2942.66	2947.66	2937.66	2935.33	2932.66	2927.66	2938
GOLDPETAL 31OCT2017	BULLISH	2929.66	2933.33	2943.33	2923.33	2919.66	2913.33	2903.33	2926

Registered Office:#15-8-1/2/3, 2nd floor, Slddiamber Bazar, Hyderabad - 500012, Telangana State. INDIA.

Corporate Office: #3-6-196/197, Pnme Plaza, 2nd floor, flat No. 204 A & B, H1mayath Nagar, Hyderabad - 500029, Telangana State.INDIA.

Ph:+91-40-64645000,Fax: +91-40-23262166,E-mail:support@basanonline.com,Website:[www.basanonline.com](http://www.basanonline.com)



# BASAN COMMODITY LIMITED

DAILY COMMODITY REPORT 29th Aug 2017

COMMODITIES	TREND	R1	R2	R3	PIVOT POINT	S1	S2	S3	Close
GOLDPETAL 29SEP2017	BULLISH	2921.66	2928.33	2945.33	2911.33	2904.66	2894.33	2877.33	2915
GOLDPETAL 31AUG2017	BULLISH	2885	2893	2911	2875	2867	2857	2839	2877
LEAD 31OCT2017	BULLISH	149.61	149.93	150.63	149.23	148.91	148.53	147.83	149.3
LEAD 29SEP2017	BULLISH	149.5	149.95	151.15	148.75	148.3	147.55	146.35	149.05
LEAD 31AUG2017	BULLISH	148.5	149	150.3	147.7	147.2	146.4	145.1	148
LEADMINI 31OCT2017	BEARISH	149.56	149.88	150.48	149.28	148.96	148.68	148.08	149.25
LEADMINI 29SEP2017	BULLISH	149.51	150.03	151.28	148.78	148.26	147.53	146.28	149
LEADMINI 31AUG2017	BULLISH	148.76	149.53	151.33	147.73	146.96	145.93	144.13	148
MENTHAOIL 30NOV2017	BULLISH	1204.86	1207.93	1215.93	1199.93	1196.86	1191.93	1183.93	1201.8
MENTHAOIL 31OCT2017	BEARISH	1189.53	1196.06	1207.76	1184.36	1177.83	1172.66	1160.96	1183
MENTHAOIL 29SEP2017	BEARISH	1177.43	1185.26	1199.16	1171.36	1163.53	1157.46	1143.56	1169.6
MENTHAOIL 31AUG2017	BEARISH	1162.76	1170.63	1184.13	1157.13	1149.26	1143.63	1130.13	1154.9
NATURALGAS 26OCT2017	BULLISH	197.03	200.06	206.46	193.66	190.63	187.26	180.86	194
NATURALGAS 26SEP2017	BULLISH	192.13	195.56	202.76	188.36	184.93	181.16	173.96	188.7
NICKEL 31OCT2017	BULLISH	758.13	762.66	774.86	750.46	745.93	738.26	726.06	753.6
NICKEL 29SEP2017	BULLISH	756.76	764.33	784.23	744.43	736.86	724.53	704.63	749.2
NICKEL 31AUG2017	BULLISH	754.8	764.2	789	739.4	730	714.6	689.8	745.4
NICKELM 31OCT2017	BULLISH	759.83	766.16	782.66	749.66	743.33	733.16	716.66	753.5
NICKELM 29SEP2017	BULLISH	757.86	766.73	790.23	743.23	734.36	719.73	696.23	749
NICKELM 31AUG2017	BULLISH	755.2	764.9	791.1	738.7	729	712.5	686.3	745.5
PEPPER 20SEP2017	BULLISH	49200	49250	49350	49150	49100	49050	48950	49150
SILVER 05MAR2018	BULLISH	40835.3	41077.7	41583.7	40571.66	40329.3	40065.7	39559.7	40593
SILVER 05DEC2017	BULLISH	40618.7	40859.3	41560.3	40158.33	39917.7	39457.3	38756.3	40378
SILVER 05SEP2017	BULLISH	39971.3	40215.7	40915.7	39515.66	39271.3	38815.7	38115.7	39727
SILVERM 30APR2018	BULLISH	41401	41401	41401	41401	41401	41401	41401	41401
SILVERM 28FEB2018	BULLISH	41143.3	41381.7	42007.7	40755.66	40517.3	40129.7	39503.7	40905
SILVERM 30NOV2017	BULLISH	40682.3	40953.7	41708.7	40198.66	39927.3	39443.7	38688.7	40411
SILVERM 31AUG2017	BULLISH	39980.3	40227.7	40937.7	39517.66	39270.3	38807.7	38097.7	39733
SILVERMIC 30APR2018	BULLISH	40802	40802	40802	40802	40802	40802	40802	40802
SILVERMIC 28FEB2018	BULLISH	41230.7	41489.3	42238.3	40740.33	40481.7	39991.3	39242.3	40972
SILVERMIC 30NOV2017	BULLISH	40650	40899	41623	40175	39926	39451	38727	40401
SILVERMIC 31AUG2017	BULLISH	39982	40231	40946	39516	39267	38801	38086	39733
ZINC 30NOV2017	BULLISH	197.45	197.45	197.45	197.45	197.45	197.45	197.45	197.45
ZINC 31OCT2017	BEARISH	198.23	198.76	199.81	197.71	197.18	196.66	195.61	197.7
ZINC 29SEP2017	BULLISH	198.23	199.21	201.51	196.91	195.93	194.61	192.31	197.25
ZINC 31AUG2017	BULLISH	198.16	199.28	201.88	196.68	195.56	194.08	191.48	197.05
ZINCMINI 31OCT2017	BULLISH	197.85	198.3	199.35	197.25	196.8	196.2	195.15	197.4

Registered Office:#15-8-1/2/3, 2nd floor, Slddiamber Bazar, Hyderabad - 500012, Telangana State. INDIA.

Corporate Office: #3-6-196/197, Pnme Plaza, 2nd floor, flat No. 204 A & B, H1mayath Nagar, Hyderabad - 500029, Telangana State.INDIA.

Ph:+91-40-64645000,Fax: +91-40-23262166,E-mail:support@basanonline.com,Website:[www.basanonline.com](http://www.basanonline.com)



# BASAN COMMODITY LIMITED

DAILY COMMODITY REPORT 29th Aug 2017

COMMODITIES	TREND	R1	R2	R3	PIVOT POINT	S1	S2	S3	Close
ZINCMINI 29SEP2017	BULLISH	197.95	198.7	200.45	196.95	196.2	195.2	193.45	197.2
ZINCMINI 31AUG2017	BULLISH	198.18	199.36	202.11	196.61	195.43	193.86	191.11	197

Registered Office:#15-8-1/2/3, 2nd floor, Slddiamber Bazar, Hyderabad - 500012, Telangana State. INDIA.  
Corporate Office: #3-6-196/197, Pnme Plaza, 2nd floor, flat No. 204 A & B, H1mayath Nagar, Hyderabad - 500029, Telangana State.INDIA.  
Ph:+91-40-64645000,Fax: +91-40-23262166,E-mail:support@basanonline.com,Website:[www.basanonline.com](http://www.basanonline.com)