



BASAN EQUITY BROKING LIMITED

DAILY EQUITY REPORT 28th Aug 2017

NIFTY POSITIVE

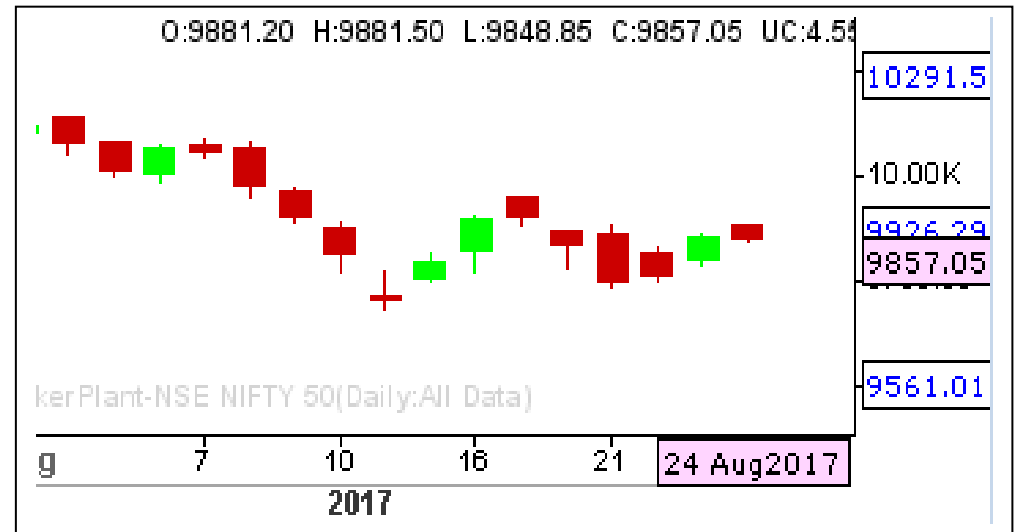
RANGE : 9780 - 9940

What Chart Says :

Spot Nifty has finished its week with mixed signals at 9857.05 levels.

For the day trend could be positive and Benchmark Nifty is expected to extend its short term positive momentum towards 9940-9950 levels zone. There after price needs to clear 9950 to continue its original trend to bullish, failure of which can attract selling interest again.

Awaiting for fresh entry.



BANK NIFTY SIDWAYS TO HIGHER

RANGE : 24200 - 24800

What Chart Says :

Bank Nifty ended its day on negative note on Thursday by settling at 24274 levels, just below key 24300 levels.

For the day trend remains strong and is expected to trade sideways to higher towards 24550 initially and any sustained holding above 24550 can push prices higher towards 24800 levels.

Awaiting for fresh entry.



Registered Office:#15-8-1/2/3, 2nd floor, Sliddiamber Bazar, Hyderabad - 500012, Telangana State. INDIA.

Corporate Office: #3-6-196/197, Pnme Plaza, 2nd floor, flat No. 204 A & B, H1mayath Nagar, Hyderabad - 500029, Telangana State.INDIA.

Ph:+91-40-64645000,Fax: +91-40-23262166,E-mail:support@basanonline.com,Website:www.basanonline.com



BASAN EQUITY BROKING LIMITED

DAILY EQUITY REPORT 28th Aug 2017

CASH NH

STOP : 275.00

TARGET : 340

- **Hold Buys in NH initiated at 303.50 with stop below 275 for the price objective of 340. cmp : 305.30.**
- Hold BUYS in TINPLATE till price manages to trade above 130 targeting 180. CMP:142.80.
- BUY BEPL on dips 78.00 with stop below 69.00 for the price objective of 90.00 followed by 100.00. cmp:88.10.
- Hold Graphite with stop below 224, targeting 280 for longs initiated at 243.20. CMP : 253.10.
- Hold MAHASTEEL longs initiated at 84.40 and on dips to 80.00 with stop below 66.00, targets 105 followed by 130.00 levels. CMP:90.25.
- Hold AUTOIND till price manages to trade above 70.00 with stop below 57.00, targeting 96.00. CMP : 81.65



FUTURES BUYS AMBUJACEM

STOP : 260

TARGET : 284

What Chart Says :

Holding AMBUJA CEMENT for the price objective of 284 levels with stop below 260. CMP : 275.65

Targets attained in BajajFin 5500 for the longs initiated at 5380 levels.

Targets almost attained in HAVELLS(High:489.85, given:490) for exisiting longs.

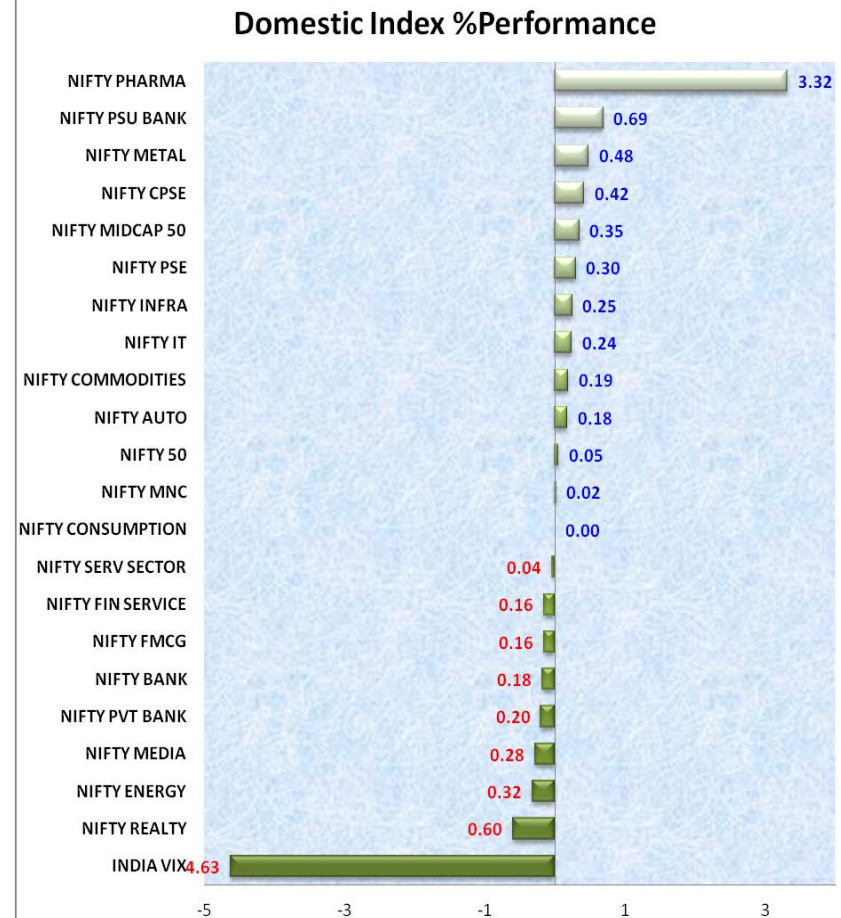


Registered Office:#15-8-1/2/3, 2nd floor, Sliddiamber Bazar, Hyderabad - 500012, Telangana State. INDIA.

Corporate Office: #3-6-196/197, Pnme Plaza, 2nd floor, flat No. 204 A & B, H1mayath Nagar, Hyderabad - 500029, Telangana State.INDIA.

Ph:+91-40-64645000,Fax: +91-40-23262166,E-mail:support@basanonline.com,Website:www.basanonline.com

- Long Build up was found in Kajaricer, AuroPharma, AjantPharma and BEL
- Short Covering was observed in WockPharma, Jpassociat, Cadilahc, Divislab
- Short Built up was identified in Indigo, CeatLtd, HclTech, IGI
- Long Unwinding was seen in Petronet, Bharatforg, Shreecem, Batalndia.
- INDEX Drivers are AuroPharma, Lupin, SunPharma and Dr. Reddys



Registered Office:#15-8-1/2/3, 2nd floor, Slddiamber Bazar, Hyderabad - 500012, Telangana State. INDIA.

Corporate Office: #3-6-196/197, Pnme Plaza, 2nd floor, flat No. 204 A & B, H1mayath Nagar, Hyderabad - 500029, Telangana State.INDIA.

Ph:+91-40-64645000,Fax: +91-40-23262166,E-mail:support@basanonline.com,Website:www.basanonline.com



BASAN EQUITY BROKING LIMITED

DAILY EQUITY REPORT 28th Aug 2017

| NIFTY 50 | TREND | R1 | R2 | R3 | PIVOT POINT | S1 | S2 | S3 | Close | Prev.Close | %Chg |
|-------------|---------|---------|---------|---------|-------------|---------|---------|---------|---------|------------|-------|
| ACC | BEARISH | 1798.38 | 1815.27 | 1843.82 | 1786.72 | 1769.83 | 1758.17 | 1729.62 | 1781.5 | 1801.9 | -1.13 |
| ADANI PORTS | BEARISH | 385.47 | 390.88 | 399.53 | 382.23 | 376.82 | 373.58 | 364.93 | 380.05 | 385 | -1.29 |
| AMBUJACEM | BEARISH | 277.87 | 280.33 | 285.13 | 275.53 | 273.07 | 270.73 | 265.93 | 275.4 | 276.65 | -0.45 |
| ASIANPAINT | BEARISH | 1143.4 | 1151.2 | 1165.2 | 1137.2 | 1129.4 | 1123.2 | 1109.2 | 1135.6 | 1141.3 | -0.5 |
| AUROPHARMA | BULLISH | 744.85 | 757.55 | 792.95 | 722.15 | 709.45 | 686.75 | 651.35 | 732.15 | 698.65 | 4.79 |
| AXISBANK | BULLISH | 510.88 | 514.92 | 523.37 | 506.47 | 502.43 | 498.02 | 489.57 | 506.85 | 502.65 | 0.84 |
| BAJAJ-AUTO | BEARISH | 2758.53 | 2788.52 | 2842.72 | 2734.32 | 2704.33 | 2680.12 | 2625.92 | 2728.55 | 2754.65 | -0.95 |
| BANKBARODA | BULLISH | 144.35 | 145.85 | 149.2 | 142.5 | 141 | 139.15 | 135.8 | 142.85 | 140.95 | 1.35 |
| BHARTIARTL | BULLISH | 435.53 | 438.12 | 444.47 | 431.77 | 429.18 | 425.42 | 419.07 | 432.95 | 431.9 | 0.24 |
| BOSCHLTD | BEARISH | 21977.7 | 22279.1 | 22749.7 | 21808.57 | 21507.1 | 21338 | 20867.5 | 21676.3 | 21882.4 | -0.94 |
| BPCL | BEARISH | 513.72 | 519.23 | 529.48 | 508.98 | 503.47 | 498.73 | 488.48 | 508.2 | 509.7 | -0.29 |
| CIPLA | BULLISH | 580.77 | 587.48 | 605.93 | 569.03 | 562.32 | 550.58 | 532.13 | 574.05 | 559.15 | 2.66 |
| COALINDIA | BULLISH | 242.87 | 244.43 | 247.63 | 241.23 | 239.67 | 238.03 | 234.83 | 241.3 | 241.1 | 0.08 |
| DRREDDY | BULLISH | 2121.92 | 2155.68 | 2245.13 | 2066.23 | 2032.47 | 1976.78 | 1887.33 | 2088.15 | 2030.95 | 2.82 |
| EICHERMOT | BULLISH | 30993.6 | 31236.3 | 31725.8 | 30746.8 | 30504.1 | 30257.3 | 29767.8 | 30750.9 | 30648.25 | 0.33 |
| GAIL | BEARISH | 388.65 | 394.3 | 403.75 | 384.85 | 379.2 | 375.4 | 365.95 | 383 | 385.45 | -0.64 |
| HCLTECH | BEARISH | 879 | 890.5 | 908.5 | 872.5 | 861 | 854.5 | 836.5 | 867.5 | 880 | -1.42 |
| HDFC | BEARISH | 1768.9 | 1780.45 | 1803.45 | 1757.45 | 1745.9 | 1734.45 | 1711.45 | 1757.35 | 1765.25 | -0.45 |
| HDFCBANK | BEARISH | 1771.92 | 1781.33 | 1797.13 | 1765.53 | 1756.12 | 1749.73 | 1733.93 | 1762.5 | 1772.45 | -0.56 |
| HEROMOTOCO | BEARISH | 3915.1 | 3947.55 | 4002.55 | 3892.55 | 3860.1 | 3837.55 | 3782.55 | 3882.65 | 3888.9 | -0.16 |
| HINDALCO | BULLISH | 235 | 237 | 241.35 | 232.65 | 230.65 | 228.3 | 223.95 | 233 | 230.9 | 0.91 |
| HINDUNILVR | BEARISH | 1187.83 | 1195.97 | 1210.37 | 1181.57 | 1173.43 | 1167.17 | 1152.77 | 1179.7 | 1188.15 | -0.71 |
| IBULHSGFIN | BEARISH | 1228.67 | 1246.98 | 1278.08 | 1215.88 | 1197.57 | 1184.78 | 1153.68 | 1210.35 | 1221.75 | -0.93 |
| ICICIBANK | BEARISH | 299.68 | 301.67 | 305.17 | 298.17 | 296.18 | 294.67 | 291.17 | 297.7 | 298.6 | -0.3 |
| INDUSINDBK | BEARISH | 1682.57 | 1697.43 | 1725.73 | 1669.13 | 1654.27 | 1640.83 | 1612.53 | 1667.7 | 1660.9 | 0.41 |
| INFRATEL | BEARISH | 387.7 | 391.5 | 399 | 384 | 380.2 | 376.5 | 369 | 383.9 | 382.8 | 0.29 |
| INFY | BULLISH | 919.48 | 926.82 | 942.72 | 910.92 | 903.58 | 895.02 | 879.12 | 912.15 | 892.8 | 2.17 |
| IOC | BEARISH | 432 | 435.8 | 442.6 | 429 | 425.2 | 422.2 | 415.4 | 428.2 | 426.85 | 0.32 |
| ITC | BEARISH | 282.93 | 284.42 | 286.82 | 282.02 | 280.53 | 279.62 | 277.22 | 281.45 | 282.55 | -0.39 |
| KOTAKBANK | BEARISH | 982.65 | 993.2 | 1012.05 | 974.35 | 963.8 | 955.5 | 936.65 | 972.1 | 980.1 | -0.82 |
| LT | BULLISH | 1136.33 | 1140.97 | 1150.77 | 1131.17 | 1126.53 | 1121.37 | 1111.57 | 1131.7 | 1124.15 | 0.67 |
| LUPIN | BULLISH | 1009.87 | 1027.23 | 1072.03 | 982.43 | 965.07 | 937.63 | 892.83 | 992.5 | 955.85 | 3.83 |
| M&M | BEARISH | 1382.83 | 1390.52 | 1405.72 | 1375.32 | 1367.63 | 1360.12 | 1344.92 | 1375.15 | 1374.2 | 0.07 |
| MARUTI | BULLISH | 7670.7 | 7728.55 | 7879.95 | 7577.15 | 7519.3 | 7425.75 | 7274.35 | 7612.85 | 7573.05 | 0.53 |

Registered Office:#15-8-1/2/3, 2nd floor, Slddiamber Bazar, Hyderabad - 500012, Telangana State. INDIA.

Corporate Office: #3-6-196/197, Pnme Plaza, 2nd floor, flat No. 204 A & B, H1mayath Nagar, Hyderabad - 500029, Telangana State.INDIA.

Ph:+91-40-64645000,Fax: +91-40-23262166,E-mail:support@basanonline.com,Website:www.basanonline.com



BASAN EQUITY BROKING LIMITED

DAILY EQUITY REPORT 28th Aug 2017

| | | | | | | | | | | | |
|-----------|---------|--------|--------|--------|--------|--------|--------|--------|--------|--------|-------|
| NTPC | BEARISH | 170.98 | 172.97 | 176.32 | 169.62 | 167.63 | 166.27 | 162.92 | 169 | 170.25 | -0.73 |
| ONGC | BEARISH | 160.22 | 160.98 | 162.33 | 159.63 | 158.87 | 158.28 | 156.93 | 159.45 | 159.7 | -0.16 |
| POWERGRID | BULLISH | 222.42 | 223.88 | 227.03 | 220.73 | 219.27 | 217.58 | 214.43 | 220.95 | 219.75 | 0.55 |

| NIFTY 50 | TREND | R1 | R2 | R3 | PIVOT POINT | S1 | S2 | S3 | Close | Prev.Close | %Chg |
|------------|---------|---------|---------|---------|-------------|---------|---------|---------|---------|------------|-------|
| RELIANCE | BEARISH | 1585.93 | 1603.82 | 1632.42 | 1575.22 | 1557.33 | 1546.62 | 1518.02 | 1568.05 | 1582.05 | -0.88 |
| SBIN | BULLISH | 282 | 283.7 | 287.65 | 279.75 | 278.05 | 275.8 | 271.85 | 280.3 | 279 | 0.47 |
| SUNPHARMA | BULLISH | 491.13 | 499.27 | 518.22 | 480.32 | 472.18 | 461.37 | 442.42 | 483 | 469.2 | 2.94 |
| TATAMOTORS | BULLISH | 386.7 | 389.25 | 395.1 | 383.4 | 380.85 | 377.55 | 371.7 | 384.15 | 379.95 | 1.11 |
| TATAMTRDVR | BEARISH | 228.95 | 230.55 | 233.65 | 227.45 | 225.85 | 224.35 | 221.25 | 227.35 | 226.55 | 0.35 |
| TATAPOWER | BEARISH | 80.37 | 81.58 | 83.58 | 79.58 | 78.37 | 77.58 | 75.58 | 79.15 | 78.75 | 0.51 |
| TATASTEEL | BULLISH | 642.83 | 646.67 | 656.62 | 636.72 | 632.88 | 626.77 | 616.82 | 639 | 634.6 | 0.69 |
| TCS | BEARISH | 2514.32 | 2532.03 | 2563.83 | 2500.23 | 2482.52 | 2468.43 | 2436.63 | 2496.6 | 2489.45 | 0.29 |
| TECHM | BEARISH | 435.27 | 442.83 | 455.23 | 430.43 | 422.87 | 418.03 | 405.63 | 427.7 | 430.2 | -0.58 |
| ULTRACEMCO | BEARISH | 3956.3 | 3972.95 | 4002.55 | 3943.35 | 3926.7 | 3913.75 | 3884.15 | 3939.65 | 3951.55 | -0.3 |
| VEDL | BEARISH | 302.45 | 306.35 | 313.6 | 299.1 | 295.2 | 291.85 | 284.6 | 298.55 | 299.6 | -0.35 |
| WIPRO | BEARISH | 290.67 | 291.93 | 294.13 | 289.73 | 288.47 | 287.53 | 285.33 | 289.4 | 290 | -0.21 |
| YESBANK | BEARISH | 1734.13 | 1748.82 | 1773.37 | 1724.27 | 1709.58 | 1699.72 | 1675.17 | 1719.45 | 1723.25 | -0.22 |
| ZEEL | BEARISH | 517.07 | 522.43 | 531.33 | 513.53 | 508.17 | 504.63 | 495.73 | 511.7 | 514.9 | -0.62 |

Registered Office:#15-8-1/2/3, 2nd floor, Sliddiamber Bazar, Hyderabad - 500012, Telangana State. INDIA.

Corporate Office: #3-6-196/197, Pnme Plaza, 2nd floor, flat No. 204 A & B, H1mayath Nagar, Hyderabad - 500029, Telangana State.INDIA.

Ph:+91-40-64645000,Fax: +91-40-23262166,E-mail:support@basanonline.com,Website:www.basanonline.com



BASAN EQUITY BROKING LIMITED

DAILY EQUITY REPORT 28th Aug 2017

Registered Office:#15-8-1/2/3, 2nd floor, Slddiamber Bazar, Hyderabad - 500012, Telangana State. INDIA.
Corporate Office: #3-6-196/197, Pnme Plaza, 2nd floor, flat No. 204 A & B, H1mayath Nagar, Hyderabad - 500029, Telangana State.INDIA.
Ph:+91-40-64645000,Fax: +91-40-23262166,E-mail:support@basanonline.com,Website:www.basanonline.com