

NIFTY POSITIVE

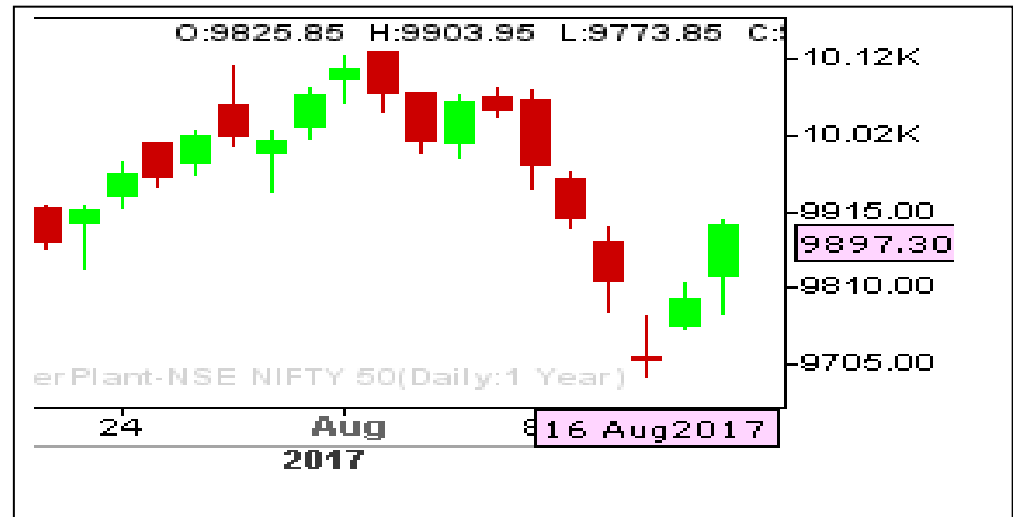
RANGE : 9820 - 9980

What Chart Says :

Spot Nifty has regained its positive momentum on Wednesday and finally settled at 9897.30 levels. For the day trend remains firm targeting 9935 levels initially followed by 9980 levels.

Any strong close below 9700 can only be considered as the bearish trend.

Hold longs initiated at 9830 levels with stop below 9700 for 9980 levels.



BANK NIFTY SIDEWAYS TO HIGHER

RANGE : 24200 - 25000

What Chart Says :

Trend remains firm and Bank Nifty is likely to continue its gains towards 24800 followed by 25000 levels in near term.

Alternatively, any strong close below 23800 only can change our bullish bias.

Hold longs initiated at 24190 with stop below 23800 for the price objective of 25000 levels.





CASH ESCORTS

STOP : 600

TARGET : 700

What Chart Says :

Buy ESCORTS with stop below 600 for the price objective of 700 levels.

Hold Graphite with stop below 224, targeting 280 for longs initiated at 243.20. CMP : 244

Hold MAHASTEEL longs initiated at 84.40 and on dips to 80.00 with stop below 66.00, targets 105 followed by 130.00 levels. CMP:88.45

Hold AUTOIND till price manages to trade above 70.00 with stop below 57.00, targeting 96.00. CMP : 82.05



FUTURES BUY TATA STEEL

STOP : 620

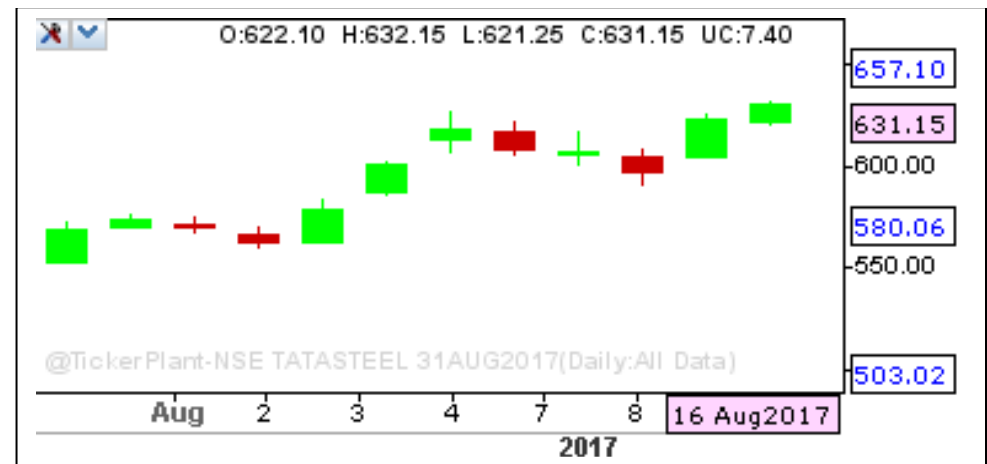
TARGET : 490

What Chart Says :

Buy TATA STEEL with stop below 620 for the price targets of 657

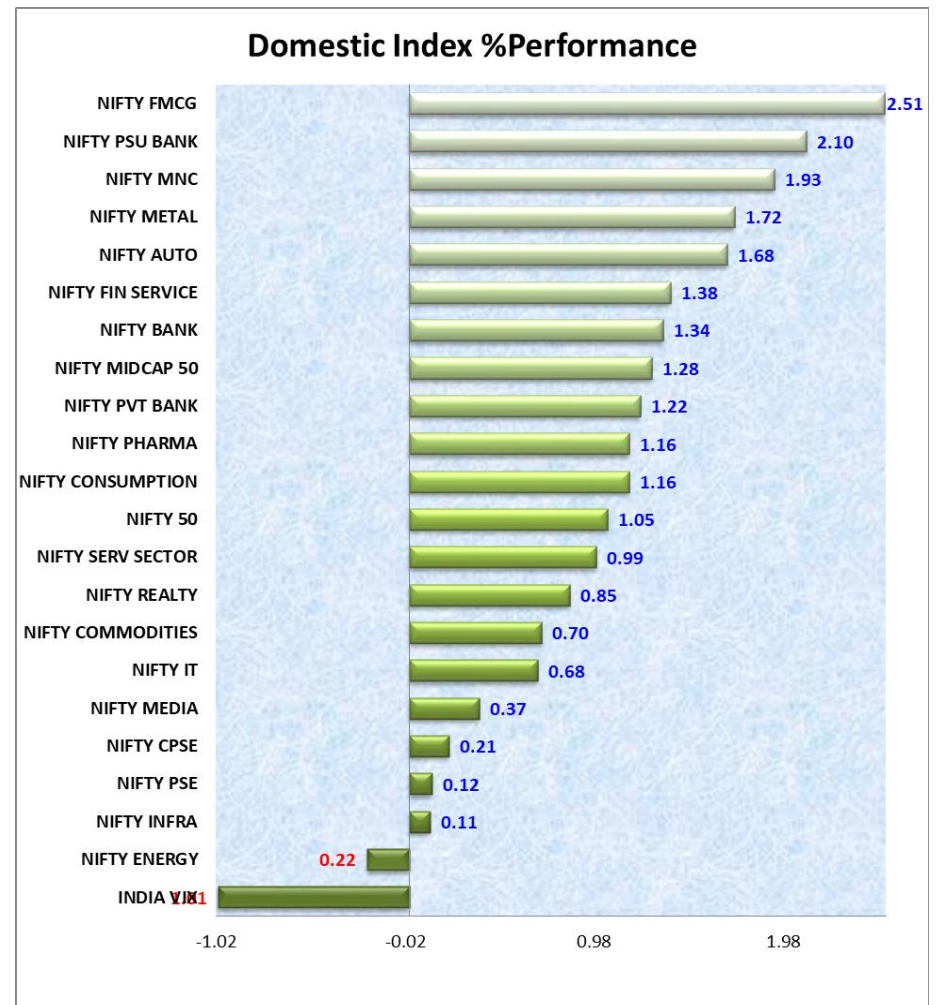
Hold HAVELLS with stop below 460 targeting 490 levels. cmp : 464.65

Holding AMBUJA CEMENT for the price objective of 284 levels with stop below 260. CMP : 271.15



- Long Build up was found in GODFRYPHLP, GRANULES, TATAGLOBAL, TORNTPHARMA
- Short Covering was observed in SINTEX, GODREJIND, PETRONET, NATIONALUM
- Short Built up was identified in BIOCON, RCOM, HAVELLS, APOLLOHOSP
- Long Unwinding was seen in VOLTAS, HDIL, BEML, TITAN
- INDEX Drivers are TECH MAHINDRA, TATA MOTORS, CIPLA and BANK of BARODA.

NIFTY OPTION STRATEGY : HOLD NIFTY 9800 CALL BOUGHT AT : 86.50 and SOLD 10000 CALL at 25. CMP 9800 CALL : 164.40 and 10000 CALL : 53.10.





BASAN EQUITY BROKING LIMITED

DAILY EQUITY REPORT 17th Aug 2017

NIFTY 50	TREND	R1	R2	R3	PIVOT POINT	S1	S2	S3	Close	Prev.Close	%Chg
ACC	BULLISH	1801.87	1818.93	1861.43	1776.43	1759.37	1733.93	1691.43	1811.2	1784.8	1.48
ADANI PORTS	BULLISH	406.33	416.47	437.27	395.67	385.53	374.87	354.07	397.55	396.2	0.34
AMBUJACEM	BULLISH	266.75	268.4	272.05	264.75	263.1	261.1	257.45	270.05	265.1	1.87
ASIANPAINT	BEARISH	1163.47	1172.93	1191.63	1154.23	1144.77	1135.53	1116.83	1141.3	1154	-1.1
AUROPHARMA	BULLISH	721.6	728.7	743.8	713.6	706.5	698.5	683.4	713.9	714.5	-0.08
AXISBANK	BULLISH	496.22	500.68	508.38	492.98	488.52	485.28	477.58	499.5	491.75	1.58
BAJAJ-AUTO	BULLISH	2853.6	2875.6	2931.4	2819.8	2797.8	2764	2708.2	2849.2	2831.6	0.62
BANKBARODA	BULLISH	143.73	145.22	148.72	141.72	140.23	138.22	134.72	147.15	142.25	3.44
BHARTIARTL	BEARISH	413.62	418.68	427.98	409.38	404.32	400.08	390.78	407.75	408.55	-0.2
BOSCHLTD	BEARISH	22727.7	23317.2	24270.1	22364.33	21774.8	21411.4	20458.5	22309.9	22138.1	0.78
BPCL	BULLISH	486.13	493.92	512.12	475.72	467.93	457.52	439.32	483.95	478.35	1.17
CIPLA	BULLISH	580	589.95	613.85	566.05	556.1	542.15	518.25	590.45	570.05	3.58
COALINDIA	BEARISH	240.65	243.15	247.9	238.4	235.9	233.65	228.9	237.95	238.15	-0.08
DRREDDY	BULLISH	2037.93	2073.82	2143.62	2004.02	1968.13	1934.22	1864.42	2005.25	2002.05	0.16
EICHERMOT	BULLISH	30951.3	31517.1	32675.9	30358.27	29792.5	29199.5	28040.7	30617	30385.6	0.76
GAIL	BEARISH	375.58	378.67	384.52	372.82	369.73	366.97	361.12	371.2	372.5	-0.35
HCLTECH	BEARISH	873.65	887.2	909.55	864.85	851.3	842.5	820.15	864.5	860.1	0.51
HDFC	BULLISH	1742.4	1770.85	1824.85	1716.85	1688.4	1662.85	1608.85	1741.75	1713.95	1.62
HDFCBANK	BULLISH	1772.1	1787	1813.95	1760.05	1745.15	1733.1	1706.15	1781.25	1757.2	1.37
HERMOTOCO	BULLISH	4004.87	4052.68	4178.18	3927.18	3879.37	3801.68	3676.18	4022.1	3957.05	1.64
HINDALCO	BULLISH	232.87	236.58	245.18	227.98	224.27	219.38	210.78	233.6	229.15	1.94
HINDUNILVR	BULLISH	1168	1180.3	1203	1157.6	1145.3	1134.9	1112.2	1186.35	1155.7	2.65
IBULHSGFIN	BULLISH	1185.2	1194.65	1217.55	1171.75	1162.3	1148.85	1125.95	1209.1	1175.75	2.84
ICICIBANK	BULLISH	293.92	296.03	301.33	290.73	288.62	285.43	280.13	294.95	291.8	1.08
INDUSINDBK	BULLISH	1639.37	1654.03	1682.23	1625.83	1611.17	1597.63	1569.43	1647.2	1624.7	1.38
INFRATEL	BULLISH	384.33	388.82	396.22	381.42	376.93	374.02	366.62	382.9	379.85	0.8
INFY	BEARISH	988.05	994.65	1006.7	982.6	976	970.55	958.5	975.2	981.45	-0.64
IOC	BULLISH	425.75	432.05	446.15	417.95	411.65	403.85	389.75	422.3	419.45	0.68
ITC	BULLISH	273.6	275.95	279.85	272.05	269.7	268.15	264.25	279.2	271.25	2.93
KOTAKBANK	BULLISH	994.98	1007.37	1027.12	987.62	975.23	967.87	948.12	1000.55	982.6	1.83
LT	BULLISH	1160.27	1173.63	1207.63	1139.63	1126.27	1105.63	1071.63	1142.25	1146.9	-0.41
LUPIN	BULLISH	976.75	986.65	1013.4	959.9	950	933.15	906.4	961	966.85	-0.61
M&M	BULLISH	1368.57	1381.38	1404.68	1358.08	1345.27	1334.78	1311.48	1371.2	1355.75	1.14
MARUTI	BULLISH	7665.3	7722.15	7854.15	7590.15	7533.3	7458.15	7326.15	7701.15	7608.45	1.22
NTPC	BEARISH	174	176.25	181.15	171.35	169.1	166.45	161.55	170.1	171.75	-0.96
ONGC	BEARISH	162.67	163.63	165.93	161.33	160.37	159.03	156.73	160.95	161.7	-0.46
POWERGRID	BEARISH	224.8	226.85	231.8	221.9	219.85	216.95	212	220.7	222.75	-0.92

Registered Office:#15-8-1/2/3, 2nd floor, Sliddiamber Bazar, Hyderabad - 500012, Telangana State. INDIA.

Corporate Office: #3-6-196/197, Pnme Plaza, 2nd floor, flat No. 204 A & B, H1mayath Nagar, Hyderabad - 500029, Telangana State.INDIA.

Ph:+91-40-64645000,Fax: +91-40-23262166,E-mail:support@basanonline.com,Website:www.basanonline.com



BASAN EQUITY BROKING LIMITED

DAILY EQUITY REPORT 17th Aug 2017

NIFTY 50	TREND	R1	R2	R3	PIVOT POINT	S1	S2	S3	Close	Prev.Close	%Chg
RELIANCE	BEARISH	1584.7	1596.35	1619.85	1572.85	1561.2	1549.35	1525.85	1566.1	1573.05	-0.44
SBIN	BULLISH	281.57	284.93	290.83	279.03	275.67	273.13	267.23	283.1	278.2	1.76
SUNPHARMA	BULLISH	488.27	504.73	548.98	460.48	444.02	416.23	371.98	485.7	471.8	2.95
TATAMOTORS	BULLISH	380.6	385.8	395	376.6	371.4	367.4	358.2	389.25	375.4	3.69
TATAMTRDVR	BULLISH	228.38	230.32	234.57	226.07	224.13	221.82	217.57	231.6	226.45	2.27
TATAPOWER	BULLISH	81.6	83.65	88.2	79.1	77.05	74.55	70	82.05	79.55	3.14
TATASTEEL	BULLISH	631.23	638.72	659.32	618.12	610.63	597.52	576.92	631.2	623.75	1.19
TCS	BULLISH	2498.53	2527.67	2574.57	2480.77	2451.63	2433.87	2386.97	2492.35	2469.4	0.93
TECHM	BULLISH	406.8	411.4	419.4	403.4	398.8	395.4	387.4	419.95	402.2	4.41
ULTRACEMCO	BEARISH	3978	3995.5	4035.5	3955.5	3938	3915.5	3875.5	3941.3	3960.5	-0.48
VEDL	BULLISH	293.77	298.38	308.38	288.38	283.77	278.38	268.38	297.2	289.15	2.78
WIPRO	BULLISH	290.52	292.53	296.18	288.88	286.87	285.23	281.58	289.95	288.5	0.5
YESBANK	BEARISH	1792.93	1807.37	1843.17	1771.57	1757.13	1735.77	1699.97	1761.85	1778.5	-0.94
ZEEL	BULLISH	525.4	533.6	554.4	512.8	504.6	492	471.2	518.7	517.2	0.29

Registered Office:#15-8-1/2/3, 2nd floor, Sllddiamber Bazar, Hyderabad - 500012, Telangana State. INDIA.

Corporate Office: #3-6-196/197, Pnme Plaza, 2nd floor, flat No. 204 A & B, H1mayath Nagar, Hyderabad - 500029, Telangana State.INDIA.

Ph:+91-40-64645000,Fax: +91-40-23262166,E-mail:support@basanonline.com,Website:www.basanonline.com



BASAN EQUITY BROKING LIMITED

DAILY EQUITY REPORT 17th Aug 2017

Registered Office:#15-8-1/2/3, 2nd floor, Slddiamber Bazar, Hyderabad - 500012, Telangana State. INDIA.
Corporate Office: #3-6-196/197, Pnme Plaza, 2nd floor, flat No. 204 A & B, H1mayath Nagar, Hyderabad - 500029, Telangana State.INDIA.
Ph:+91-40-64645000,Fax: +91-40-23262166,E-mail:support@basanonline.com,Website:www.basanonline.com