

GOLD BEARISH

STOP : 29100

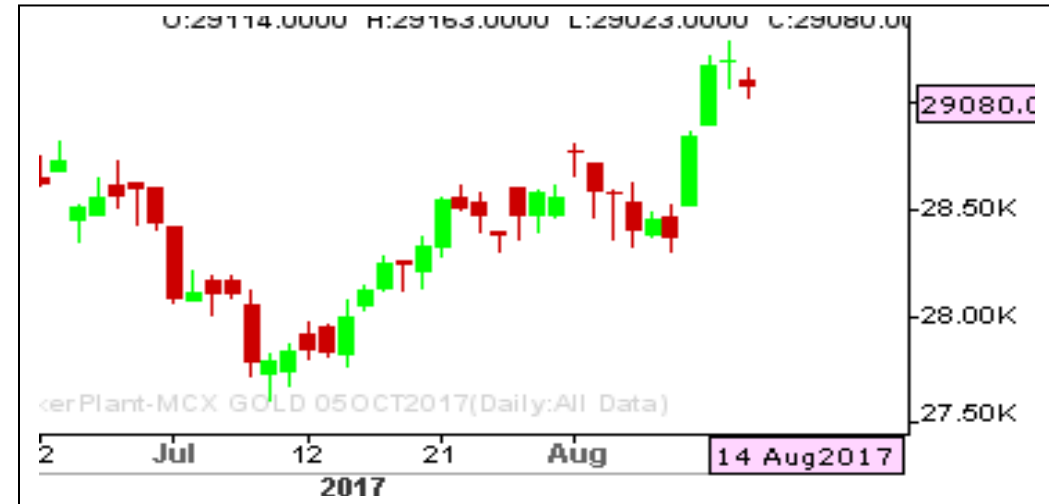
TARGET : 28500

What Chart Says :

Oct Gold remains weak for the time being on ease of Geopolitical tensions between US and North Korea. Gold is likely to extend its declines towards 28800 initially followed by 28500 levels in near term.

Any corrective gains can't be ruled out towards 29120 levels. Any strong break and close above 29200 can change our bullish bias.

Sell on rallies with stop above 29100 for the targets of 28500 levels.



SILVER BEARISH

STOP : 39500

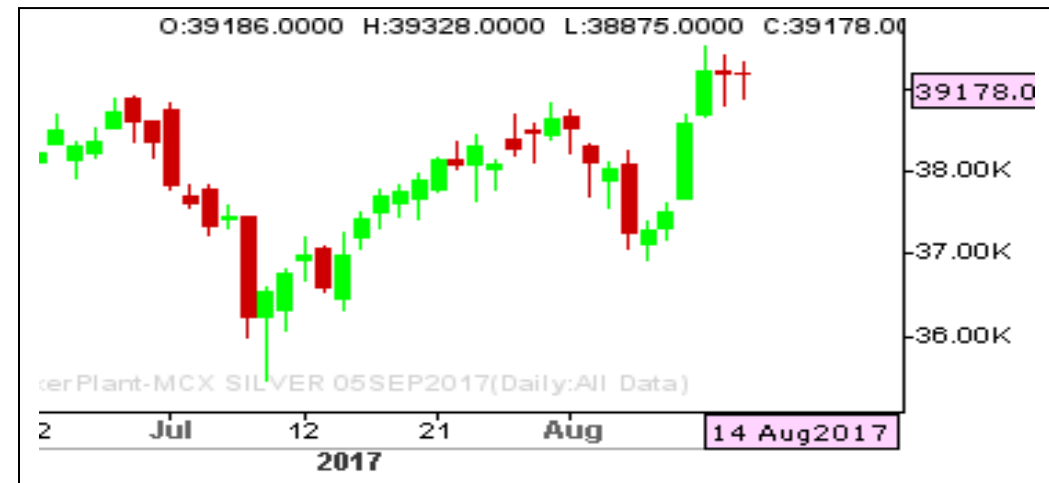
TARGET : 37500

What Chart Says :

Sep Silver prices could open gap down today and trade sideways to lower towards 37500 levels in near term.

Till price manages to trade below 39000 levels our bias remains weak targeting 38000 initially followed by 37500 levels.

Sell on rallies with stop above 39100 for 38000 and 37500 levels.



CRUDE OIL WEAK

STOP : 3225

TARGET: 3020

What Chart Says :

Aug Crude Oil has settled well below key 3080 levels, leaving room for further declines towards 3020 followed by 2980 levels.

For the day trend remains weak and Aug Crude Oil is likely to extend its declines towards 3020 by testing 3100 levels on upper end.

Holding Sells with stop above 3225 for the price objective of 3020 followed by 2980 levels.



ZINC SIDE WAYS TO HIGHER

STOP : 184

TARGET : 190

What Chart Says :

Aug Zinc prices has witnessed some negative sentiment for the past two consecutive sessions by posting a high of 190.20 levels. Till price manages to trade above 185 our bias remains firm targeting 190 levels again.

Any strong break and close below 185 can change our bias.

Buying can be preferred at 185-185.50 zone with stop below 184 for 190.





BASAN COMMODITY LIMITED

DAILY COMMODITY REPORT 16th Aug 2017

| COMMODITIES | TREND | R1 | R2 | R3 | PIVOT POINT | S1 | S2 | S3 | Close |
|----------------------|---------|---------|---------|---------|-------------|---------|---------|---------|--------|
| ALUMINI 31OCT2017 | BEARISH | 130.85 | 131.3 | 132.05 | 130.55 | 130.1 | 129.8 | 129.05 | 130.4 |
| ALUMINI 29SEP2017 | BEARISH | 130.33 | 131.06 | 132.21 | 129.91 | 129.18 | 128.76 | 127.61 | 129.6 |
| ALUMINI 31AUG2017 | BEARISH | 129.71 | 130.48 | 131.68 | 129.28 | 128.51 | 128.08 | 126.88 | 128.95 |
| ALUMINIUM 31OCT2017 | BEARISH | 130.93 | 131.36 | 132.16 | 130.56 | 130.13 | 129.76 | 128.96 | 130.5 |
| ALUMINIUM 29SEP2017 | BEARISH | 130.38 | 131.16 | 132.36 | 129.96 | 129.18 | 128.76 | 127.56 | 129.6 |
| ALUMINIUM 31AUG2017 | BEARISH | 129.68 | 130.41 | 131.56 | 129.26 | 128.53 | 128.11 | 126.96 | 128.95 |
| CARDAMOM 13OCT2017 | BULLISH | 1136.53 | 1140.26 | 1151.26 | 1129.26 | 1125.53 | 1118.26 | 1107.26 | 1132.8 |
| CARDAMOM 15SEP2017 | BULLISH | 1180.13 | 1187.56 | 1209.06 | 1166.06 | 1158.63 | 1144.56 | 1123.06 | 1172.7 |
| COPPER 30NOV2017 | BULLISH | 418.26 | 419.18 | 421.58 | 416.78 | 415.86 | 414.38 | 411.98 | 417.35 |
| COPPER 31AUG2017 | BULLISH | 412.36 | 413.68 | 416.68 | 410.68 | 409.36 | 407.68 | 404.68 | 411.05 |
| COPPERM 28FEB2018 | BULLISH | 422.6 | 423.55 | 425.55 | 421.55 | 420.6 | 419.55 | 417.55 | 421.65 |
| COPPERM 30NOV2017 | BULLISH | 418.3 | 419.25 | 421.7 | 416.8 | 415.85 | 414.35 | 411.9 | 417.35 |
| COPPERM 31AUG2017 | BULLISH | 412 | 412.95 | 415.4 | 410.5 | 409.55 | 408.05 | 405.6 | 411.05 |
| COTTON 29DEC2017 | BEARISH | 17983.3 | 18106.7 | 18306.7 | 17906.66 | 17783.3 | 17706.7 | 17506.7 | 17860 |
| COTTON 30NOV2017 | BEARISH | 18146.7 | 18353.3 | 18693.3 | 18013.33 | 17806.7 | 17673.3 | 17333.3 | 17940 |
| COTTON 31OCT2017 | BEARISH | 18583.3 | 18786.7 | 19106.7 | 18466.66 | 18263.3 | 18146.7 | 17826.7 | 18380 |
| CPO 30NOV2017 | BULLISH | 506.6 | 508.3 | 511.8 | 504.8 | 503.1 | 501.3 | 497.8 | 504.9 |
| CPO 31OCT2017 | BEARISH | 505.06 | 509.83 | 517.23 | 502.43 | 497.66 | 495.03 | 487.63 | 500.3 |
| CPO 29SEP2017 | BEARISH | 505.6 | 511.6 | 520.8 | 502.4 | 496.4 | 493.2 | 484 | 499.6 |
| CPO 31AUG2017 | BEARISH | 504.9 | 511.8 | 522.7 | 500.9 | 494 | 490 | 479.1 | 498 |
| CRUDEOIL 18OCT2017 | BEARISH | 3171.33 | 3218.66 | 3291.66 | 3145.66 | 3098.33 | 3072.66 | 2999.66 | 3124 |
| CRUDEOIL 19SEP2017 | BEARISH | 3147.66 | 3201.33 | 3284.33 | 3118.33 | 3064.66 | 3035.33 | 2952.33 | 3094 |
| CRUDEOIL 21AUG2017 | BEARISH | 3124.66 | 3179.33 | 3264.33 | 3094.33 | 3039.66 | 3009.33 | 2924.33 | 3070 |
| CRUDEOILM 18DEC2017 | BULLISH | 3230 | 3230 | 3230 | 3230 | 3230 | 3230 | 3230 | 3230 |
| CRUDEOILM 17NOV2017 | BEARISH | 3164.66 | 3179.33 | 3201.33 | 3157.33 | 3142.66 | 3135.33 | 3113.33 | 3150 |
| CRUDEOILM 18OCT2017 | BEARISH | 3173.33 | 3221.66 | 3296.66 | 3146.66 | 3098.33 | 3071.66 | 2996.66 | 3125 |
| CRUDEOILM 19SEP2017 | BEARISH | 3146.66 | 3199.33 | 3280.33 | 3118.33 | 3065.66 | 3037.33 | 2956.33 | 3094 |
| CRUDEOILM 21AUG2017 | BEARISH | 3124.33 | 3178.66 | 3262.66 | 3094.66 | 3040.33 | 3010.66 | 2926.66 | 3070 |
| GOLD 05FEB2018 | BULLISH | 29250.7 | 29310.3 | 29445.3 | 29175.33 | 29115.7 | 29040.3 | 28905.3 | 29191 |
| GOLD 05DEC2017 | BULLISH | 29207 | 29264 | 29387 | 29141 | 29084 | 29018 | 28895 | 29150 |
| GOLD 05OCT2017 | BEARISH | 29154.3 | 29228.7 | 29368.7 | 29088.66 | 29014.3 | 28948.7 | 28808.7 | 29080 |
| GOLDGUINEA 29SEP2017 | BEARISH | 23220.7 | 23266.3 | 23346.3 | 23186.33 | 23140.7 | 23106.3 | 23026.3 | 23175 |
| GOLDGUINEA 31AUG2017 | BEARISH | 23126 | 23193 | 23318 | 23068 | 23001 | 22943 | 22818 | 23059 |
| GOLDM 03NOV2017 | BULLISH | 29175 | 29217 | 29312 | 29122 | 29080 | 29027 | 28932 | 29133 |
| GOLDM 05OCT2017 | BEARISH | 29164 | 29236 | 29369 | 29103 | 29031 | 28970 | 28837 | 29092 |
| GOLDM 05SEP2017 | BEARISH | 29111.3 | 29180.7 | 29314.7 | 29046.66 | 28977.3 | 28912.7 | 28778.7 | 29042 |
| GOLDPETAL 31OCT2017 | BEARISH | 2918.66 | 2927.33 | 2944.33 | 2910.33 | 2901.66 | 2893.33 | 2876.33 | 2910 |

Registered Office:#15-8-1/2/3, 2nd floor, Slddiamber Bazar, Hyderabad - 500012, Telangana State. INDIA.

Corporate Office: #3-6-196/197, Pnme Plaza, 2nd floor, flat No. 204 A & B, H1mayath Nagar, Hyderabad - 500029, Telangana State.INDIA.

Ph:+91-40-64645000,Fax: +91-40-23262166,E-mail:support@basanonline.com,Website:www.basanonline.com



BASAN COMMODITY LIMITED

DAILY COMMODITY REPORT 16th Aug 2017

| COMMODITIES | TREND | R1 | R2 | R3 | PIVOT POINT | S1 | S2 | S3 | Close |
|----------------------|---------|---------|---------|---------|-------------|---------|---------|---------|--------|
| GOLDPETAL 29SEP2017 | BEARISH | 2908.66 | 2916.33 | 2930.33 | 2902.33 | 2894.66 | 2888.33 | 2874.33 | 2901 |
| GOLDPETAL 31AUG2017 | BULLISH | 2888 | 2901 | 2933 | 2869 | 2856 | 2837 | 2805 | 2875 |
| LEAD 31OCT2017 | BULLISH | 150.76 | 150.93 | 151.28 | 150.58 | 150.41 | 150.23 | 149.88 | 150.6 |
| LEAD 29SEP2017 | BULLISH | 150.53 | 151.01 | 152.21 | 149.81 | 149.33 | 148.61 | 147.41 | 150.05 |
| LEAD 31AUG2017 | BULLISH | 149.86 | 150.33 | 151.48 | 149.18 | 148.71 | 148.03 | 146.88 | 149.4 |
| LEADMINI 29SEP2017 | BULLISH | 150.48 | 150.91 | 151.96 | 149.86 | 149.43 | 148.81 | 147.76 | 150.05 |
| LEADMINI 31AUG2017 | BULLISH | 149.86 | 150.33 | 151.48 | 149.18 | 148.71 | 148.03 | 146.88 | 149.4 |
| MENTHAOIL 30NOV2017 | BULLISH | 1200.26 | 1206.13 | 1223.23 | 1189.03 | 1183.16 | 1171.93 | 1154.83 | 1194.4 |
| MENTHAOIL 31OCT2017 | BULLISH | 1199.93 | 1211.16 | 1243.36 | 1178.96 | 1167.73 | 1146.76 | 1114.56 | 1188.7 |
| MENTHAOIL 29SEP2017 | BULLISH | 1190.26 | 1203.63 | 1240.63 | 1166.63 | 1153.26 | 1129.63 | 1092.63 | 1176.9 |
| MENTHAOIL 31AUG2017 | BULLISH | 1178.93 | 1192.66 | 1231.56 | 1153.76 | 1140.03 | 1114.86 | 1075.96 | 1165.2 |
| NATURALGAS 26OCT2017 | BEARISH | 198.3 | 201 | 205.2 | 196.8 | 194.1 | 192.6 | 188.4 | 195.6 |
| NATURALGAS 26SEP2017 | BEARISH | 194.93 | 197.96 | 203.26 | 192.66 | 189.63 | 187.36 | 182.06 | 191.9 |
| NATURALGAS 28AUG2017 | BEARISH | 192.56 | 195.83 | 201.53 | 190.13 | 186.86 | 184.43 | 178.73 | 189.3 |
| NICKEL 31OCT2017 | BEARISH | 684.66 | 690.33 | 699.83 | 680.83 | 675.16 | 671.33 | 661.83 | 679 |
| NICKEL 29SEP2017 | BEARISH | 682.96 | 693.83 | 711.53 | 676.13 | 665.26 | 658.43 | 640.73 | 672.1 |
| NICKEL 31AUG2017 | BEARISH | 678.53 | 689.66 | 707.86 | 671.46 | 660.33 | 653.26 | 635.06 | 667.4 |
| NICKELM 31OCT2017 | BEARISH | 687.7 | 697.9 | 714.6 | 681.2 | 671 | 664.5 | 647.8 | 677.5 |
| NICKELM 29SEP2017 | BEARISH | 682.96 | 693.43 | 710.83 | 676.03 | 665.56 | 658.63 | 641.23 | 672.5 |
| NICKELM 31AUG2017 | BEARISH | 678.66 | 689.83 | 708.53 | 671.13 | 659.96 | 652.43 | 633.73 | 667.5 |
| PEPPER 18OCT2017 | BULLISH | 48090 | 48115 | 48165 | 48065 | 48040 | 48015 | 47965 | 48065 |
| PEPPER 20SEP2017 | BEARISH | 48586.7 | 48783.3 | 49163.3 | 48403.33 | 48206.7 | 48023.3 | 47643.3 | 48390 |
| RBDPMOLEIN 31AUG2017 | BEARISH | 545.66 | 547.43 | 550.63 | 544.23 | 542.46 | 541.03 | 537.83 | 543.9 |
| SILVER 05MAR2018 | BULLISH | 40201.3 | 40229.7 | 40286.7 | 40172.66 | 40144.3 | 40115.7 | 40058.7 | 40173 |
| SILVER 05DEC2017 | BULLISH | 39910.3 | 40088.7 | 40506.7 | 39670.66 | 39492.3 | 39252.7 | 38834.7 | 39732 |
| SILVER 05SEP2017 | BULLISH | 39379 | 39580 | 40033 | 39127 | 38926 | 38674 | 38221 | 39178 |
| SILVERM 29JUN2018 | BULLISH | 41409 | 41409 | 41409 | 41409 | 41409 | 41409 | 41409 | 41409 |
| SILVERM 28FEB2018 | BULLISH | 40454.3 | 40622.7 | 40976.7 | 40268.66 | 40100.3 | 39914.7 | 39560.7 | 40286 |
| SILVERM 30NOV2017 | BULLISH | 39924.7 | 40095.3 | 40501.3 | 39689.33 | 39518.7 | 39283.3 | 38877.3 | 39754 |
| SILVERM 31AUG2017 | BULLISH | 39427.3 | 39656.7 | 40149.7 | 39163.66 | 38934.3 | 38670.7 | 38177.7 | 39198 |
| SILVERMIC 30APR2018 | BULLISH | 40703 | 40703 | 40703 | 40703 | 40703 | 40703 | 40703 | 40703 |
| SILVERMIC 28FEB2018 | BEARISH | 40700.7 | 41011.3 | 41622.3 | 40400.33 | 40089.7 | 39789.3 | 39178.3 | 40390 |
| SILVERMIC 30NOV2017 | BULLISH | 39937.3 | 40114.7 | 40531.7 | 39697.66 | 39520.3 | 39280.7 | 38863.7 | 39760 |
| SILVERMIC 31AUG2017 | BULLISH | 39394 | 39587 | 40027 | 39147 | 38954 | 38707 | 38267 | 39201 |
| ZINC 31OCT2017 | BEARISH | 187.86 | 188.48 | 189.58 | 187.38 | 186.76 | 186.28 | 185.18 | 187.25 |
| ZINC 29SEP2017 | BULLISH | 188.06 | 188.73 | 190.48 | 186.98 | 186.31 | 185.23 | 183.48 | 187.4 |
| ZINC 31AUG2017 | BULLISH | 187.36 | 188.08 | 189.83 | 186.33 | 185.61 | 184.58 | 182.83 | 186.65 |

Registered Office:#15-8-1/2/3, 2nd floor, Slddiamber Bazar, Hyderabad - 500012, Telangana State. INDIA.

Corporate Office: #3-6-196/197, Pnme Plaza, 2nd floor, flat No. 204 A & B, H1mayath Nagar, Hyderabad - 500029, Telangana State.INDIA.

Ph:+91-40-64645000,Fax: +91-40-23262166,E-mail:support@basanonline.com,Website:www.basanonline.com



BASAN COMMODITY LIMITED

DAILY COMMODITY REPORT 16th Aug 2017

| COMMODITIES | TREND | R1 | R2 | R3 | PIVOT POINT | S1 | S2 | S3 | Close |
|--------------------|---------|--------|--------|--------|-------------|--------|--------|--------|--------|
| ZINCMINI 31OCT2017 | BULLISH | 187.7 | 188.25 | 189.45 | 187.05 | 186.5 | 185.85 | 184.65 | 187.15 |
| ZINCMINI 29SEP2017 | BULLISH | 187.93 | 188.61 | 190.36 | 186.86 | 186.18 | 185.11 | 183.36 | 187.25 |
| ZINCMINI 31AUG2017 | BULLISH | 187.36 | 188.08 | 189.83 | 186.33 | 185.61 | 184.58 | 182.83 | 186.65 |

Registered Office:#15-8-1/2/3, 2nd floor, Slddiamber Bazar, Hyderabad - 500012, Telangana State. INDIA.
Corporate Office: #3-6-196/197, Pnme Plaza, 2nd floor, flat No. 204 A & B, H1mayath Nagar, Hyderabad - 500029, Telangana State.INDIA.
Ph:+91-40-64645000,Fax: +91-40-23262166,E-mail:support@basanonline.com,Website:www.basanonline.com