

### GOLD BEARISH

**STOP : 29100**

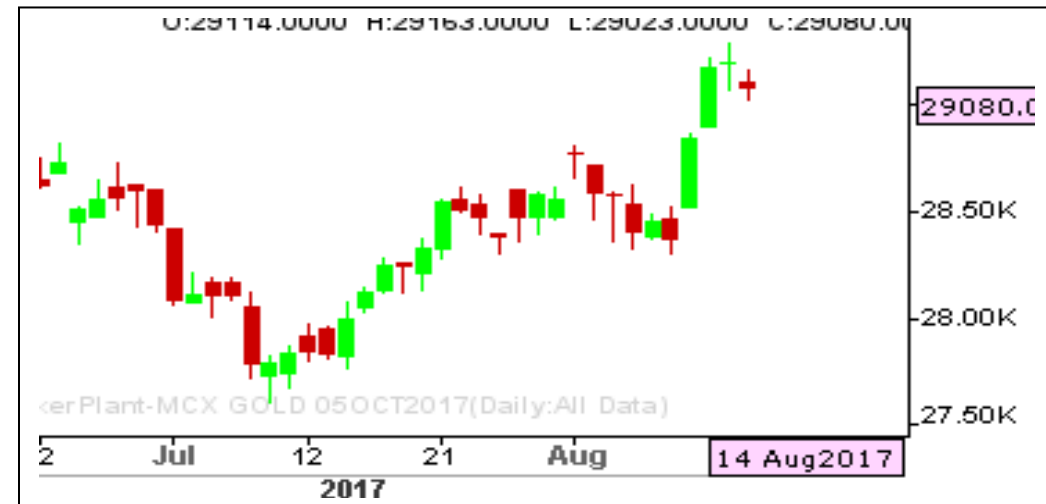
**TARGET : 28500**

#### What Chart Says :

Oct Gold remains weak for the time being on ease of Geopolitical tensions between US and North Korea. Gold is likely to extend its declines towards 28800 initially followed by 28500 levels in near term.

Any corrective gains can't be ruled out towards 29050 levels. Any strong break and close above 29200 can change our bias.

**Sell on rallies with stop above 29100 for the targets of 28500 levels.**



### SILVER BEARISH

**STOP : 39500**

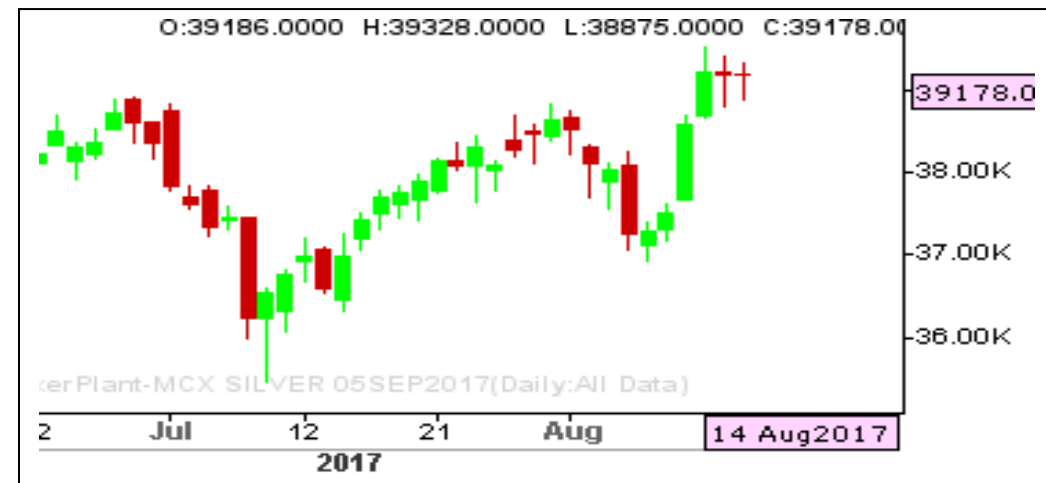
**TARGET : 37500**

#### What Chart Says :

Sep Silver prices could open gap down today and trade sideways to lower towards 37500 levels in near term.

Till price manages to trade below 39000 levels our bias remains weak targeting 38000 initially followed by 37500 levels.

**Sell on rallies with stop above 39100 for 38000 and 37500 levels.**



Registered Office:#15-8-1/2/3, 2nd floor, Sliddiambhar Bazar, Hyderabad - 500012, Telangana State. INDIA.

Corporate Office: #3-6-196/197, Pnme Plaza, 2nd floor, flat No. 204 A & B, H1mayath Nagar, Hyderabad - 500029, Telangana State.INDIA.

Ph:+91-40-64645000,Fax: +91-40-23262166,E-mail:support@basanonline.com,Website:[www.basanonline.com](http://www.basanonline.com)

### CRUDE OIL WEAK

**STOP : 3225**

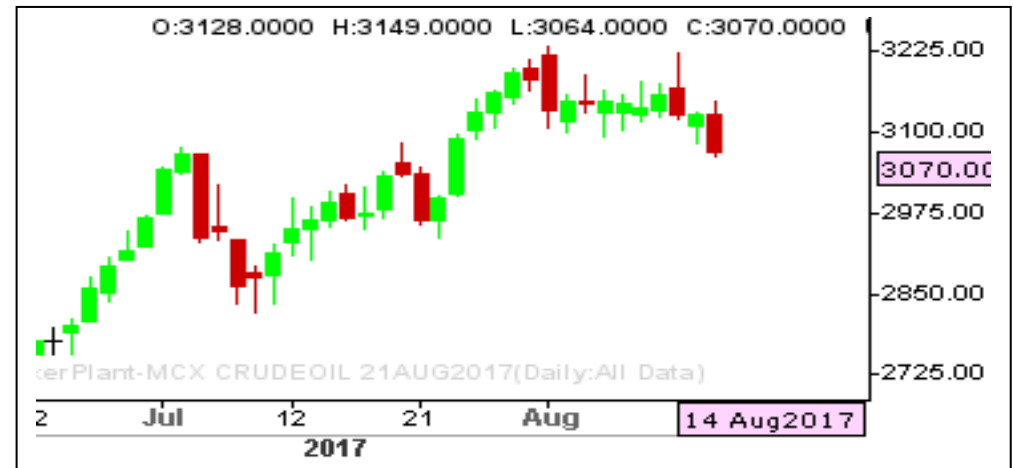
**TARGET: 3020**

#### What Chart Says :

Aug Crude Oil has settled well below key 3080 levels, leaving room for further declines towards 3020 followed by 2980 levels.

For the day trend remains weak and Aug Crude Oil is likely to extend its declines towards 3020 by testing 3100 levels on upper end.

***Holding Sells with stop above 3225 for the price objective of 3020 followed by 2980 levels.***



### ZINC SIDE WAYS TO HIGHER

**STOP : 184**

**TARGET : 190**

#### What Chart Says :

Aug Zinc prices has witnessed some negative sentiment for the past two consecutive sessions by posting a high of 190.20 levels. Till price manages to trade above 185 our bias remains firm targeting 190 levels again.

Any strong break and close below 185 can change our bias.

***Buying can be preferred at 185-185.50 zone with stop below 184 for 190.***





# BASAN COMMODITY LIMITED

DAILY COMMODITY REPORT 16th Aug 2017

COMMODITIES	TREND	R1	R2	R3	PIVOT POINT	S1	S2	S3	Close
ALUMINI 31OCT2017	BEARISH	130.85	131.3	132.05	130.55	130.1	129.8	129.05	130.4
ALUMINI 29SEP2017	BEARISH	130.33	131.06	132.21	129.91	129.18	128.76	127.61	129.6
ALUMINI 31AUG2017	BEARISH	129.71	130.48	131.68	129.28	128.51	128.08	126.88	128.95
ALUMINIUM 31OCT2017	BEARISH	130.93	131.36	132.16	130.56	130.13	129.76	128.96	130.5
ALUMINIUM 29SEP2017	BEARISH	130.38	131.16	132.36	129.96	129.18	128.76	127.56	129.6
ALUMINIUM 31AUG2017	BEARISH	129.68	130.41	131.56	129.26	128.53	128.11	126.96	128.95
CARDAMOM 13OCT2017	BULLISH	1136.53	1140.26	1151.26	1129.26	1125.53	1118.26	1107.26	1132.8
CARDAMOM 15SEP2017	BULLISH	1180.13	1187.56	1209.06	1166.06	1158.63	1144.56	1123.06	1172.7
COPPER 30NOV2017	BULLISH	418.26	419.18	421.58	416.78	415.86	414.38	411.98	417.35
COPPER 31AUG2017	BULLISH	412.36	413.68	416.68	410.68	409.36	407.68	404.68	411.05
COPPERM 28FEB2018	BULLISH	422.6	423.55	425.55	421.55	420.6	419.55	417.55	421.65
COPPERM 30NOV2017	BULLISH	418.3	419.25	421.7	416.8	415.85	414.35	411.9	417.35
COPPERM 31AUG2017	BULLISH	412	412.95	415.4	410.5	409.55	408.05	405.6	411.05
COTTON 29DEC2017	BEARISH	17983.3	18106.7	18306.7	17906.66	17783.3	17706.7	17506.7	17860
COTTON 30NOV2017	BEARISH	18146.7	18353.3	18693.3	18013.33	17806.7	17673.3	17333.3	17940
COTTON 31OCT2017	BEARISH	18583.3	18786.7	19106.7	18466.66	18263.3	18146.7	17826.7	18380
CPO 30NOV2017	BULLISH	506.6	508.3	511.8	504.8	503.1	501.3	497.8	504.9
CPO 31OCT2017	BEARISH	505.06	509.83	517.23	502.43	497.66	495.03	487.63	500.3
CPO 29SEP2017	BEARISH	505.6	511.6	520.8	502.4	496.4	493.2	484	499.6
CPO 31AUG2017	BEARISH	504.9	511.8	522.7	500.9	494	490	479.1	498
CRUDEOIL 18OCT2017	BEARISH	3171.33	3218.66	3291.66	3145.66	3098.33	3072.66	2999.66	3124
CRUDEOIL 19SEP2017	BEARISH	3147.66	3201.33	3284.33	3118.33	3064.66	3035.33	2952.33	3094
CRUDEOIL 21AUG2017	BEARISH	3124.66	3179.33	3264.33	3094.33	3039.66	3009.33	2924.33	3070
CRUDEOILM 18DEC2017	BULLISH	3230	3230	3230	3230	3230	3230	3230	3230
CRUDEOILM 17NOV2017	BEARISH	3164.66	3179.33	3201.33	3157.33	3142.66	3135.33	3113.33	3150
CRUDEOILM 18OCT2017	BEARISH	3173.33	3221.66	3296.66	3146.66	3098.33	3071.66	2996.66	3125
CRUDEOILM 19SEP2017	BEARISH	3146.66	3199.33	3280.33	3118.33	3065.66	3037.33	2956.33	3094
CRUDEOILM 21AUG2017	BEARISH	3124.33	3178.66	3262.66	3094.66	3040.33	3010.66	2926.66	3070
GOLD 05FEB2018	BULLISH	29250.7	29310.3	29445.3	29175.33	29115.7	29040.3	28905.3	29191
GOLD 05DEC2017	BULLISH	29207	29264	29387	29141	29084	29018	28895	29150
GOLD 05OCT2017	BEARISH	29154.3	29228.7	29368.7	29088.66	29014.3	28948.7	28808.7	29080
GOLDGUINEA 29SEP2017	BEARISH	23220.7	23266.3	23346.3	23186.33	23140.7	23106.3	23026.3	23175
GOLDGUINEA 31AUG2017	BEARISH	23126	23193	23318	23068	23001	22943	22818	23059
GOLDM 03NOV2017	BULLISH	29175	29217	29312	29122	29080	29027	28932	29133
GOLDM 05OCT2017	BEARISH	29164	29236	29369	29103	29031	28970	28837	29092
GOLDM 05SEP2017	BEARISH	29111.3	29180.7	29314.7	29046.66	28977.3	28912.7	28778.7	29042
GOLDPETAL 31OCT2017	BEARISH	2918.66	2927.33	2944.33	2910.33	2901.66	2893.33	2876.33	2910

Registered Office:#15-8-1/2/3, 2nd floor, Slddiamber Bazar, Hyderabad - 500012, Telangana State. INDIA.

Corporate Office: #3-6-196/197, Pnme Plaza, 2nd floor, flat No. 204 A & B, H1mayath Nagar, Hyderabad - 500029, Telangana State.INDIA.

Ph:+91-40-64645000,Fax: +91-40-23262166,E-mail:support@basanonline.com,Website:[www.basanonline.com](http://www.basanonline.com)



# BASAN COMMODITY LIMITED

DAILY COMMODITY REPORT 16th Aug 2017

COMMODITIES	TREND	R1	R2	R3	PIVOT POINT	S1	S2	S3	Close
GOLDPETAL 29SEP2017	BEARISH	2908.66	2916.33	2930.33	2902.33	2894.66	2888.33	2874.33	2901
GOLDPETAL 31AUG2017	BULLISH	2888	2901	2933	2869	2856	2837	2805	2875
LEAD 31OCT2017	BULLISH	150.76	150.93	151.28	150.58	150.41	150.23	149.88	150.6
LEAD 29SEP2017	BULLISH	150.53	151.01	152.21	149.81	149.33	148.61	147.41	150.05
LEAD 31AUG2017	BULLISH	149.86	150.33	151.48	149.18	148.71	148.03	146.88	149.4
LEADMINI 29SEP2017	BULLISH	150.48	150.91	151.96	149.86	149.43	148.81	147.76	150.05
LEADMINI 31AUG2017	BULLISH	149.86	150.33	151.48	149.18	148.71	148.03	146.88	149.4
MENTHAOIL 30NOV2017	BULLISH	1200.26	1206.13	1223.23	1189.03	1183.16	1171.93	1154.83	1194.4
MENTHAOIL 31OCT2017	BULLISH	1199.93	1211.16	1243.36	1178.96	1167.73	1146.76	1114.56	1188.7
MENTHAOIL 29SEP2017	BULLISH	1190.26	1203.63	1240.63	1166.63	1153.26	1129.63	1092.63	1176.9
MENTHAOIL 31AUG2017	BULLISH	1178.93	1192.66	1231.56	1153.76	1140.03	1114.86	1075.96	1165.2
NATURALGAS 26OCT2017	BEARISH	198.3	201	205.2	196.8	194.1	192.6	188.4	195.6
NATURALGAS 26SEP2017	BEARISH	194.93	197.96	203.26	192.66	189.63	187.36	182.06	191.9
NATURALGAS 28AUG2017	BEARISH	192.56	195.83	201.53	190.13	186.86	184.43	178.73	189.3
NICKEL 31OCT2017	BEARISH	684.66	690.33	699.83	680.83	675.16	671.33	661.83	679
NICKEL 29SEP2017	BEARISH	682.96	693.83	711.53	676.13	665.26	658.43	640.73	672.1
NICKEL 31AUG2017	BEARISH	678.53	689.66	707.86	671.46	660.33	653.26	635.06	667.4
NICKELM 31OCT2017	BEARISH	687.7	697.9	714.6	681.2	671	664.5	647.8	677.5
NICKELM 29SEP2017	BEARISH	682.96	693.43	710.83	676.03	665.56	658.63	641.23	672.5
NICKELM 31AUG2017	BEARISH	678.66	689.83	708.53	671.13	659.96	652.43	633.73	667.5
PEPPER 18OCT2017	BULLISH	48090	48115	48165	48065	48040	48015	47965	48065
PEPPER 20SEP2017	BEARISH	48586.7	48783.3	49163.3	48403.33	48206.7	48023.3	47643.3	48390
RBDPMOLEIN 31AUG2017	BEARISH	545.66	547.43	550.63	544.23	542.46	541.03	537.83	543.9
SILVER 05MAR2018	BULLISH	40201.3	40229.7	40286.7	40172.66	40144.3	40115.7	40058.7	40173
SILVER 05DEC2017	BULLISH	39910.3	40088.7	40506.7	39670.66	39492.3	39252.7	38834.7	39732
SILVER 05SEP2017	BULLISH	39379	39580	40033	39127	38926	38674	38221	39178
SILVERM 29JUN2018	BULLISH	41409	41409	41409	41409	41409	41409	41409	41409
SILVERM 28FEB2018	BULLISH	40454.3	40622.7	40976.7	40268.66	40100.3	39914.7	39560.7	40286
SILVERM 30NOV2017	BULLISH	39924.7	40095.3	40501.3	39689.33	39518.7	39283.3	38877.3	39754
SILVERM 31AUG2017	BULLISH	39427.3	39656.7	40149.7	39163.66	38934.3	38670.7	38177.7	39198
SILVERMIC 30APR2018	BULLISH	40703	40703	40703	40703	40703	40703	40703	40703
SILVERMIC 28FEB2018	BEARISH	40700.7	41011.3	41622.3	40400.33	40089.7	39789.3	39178.3	40390
SILVERMIC 30NOV2017	BULLISH	39937.3	40114.7	40531.7	39697.66	39520.3	39280.7	38863.7	39760
SILVERMIC 31AUG2017	BULLISH	39394	39587	40027	39147	38954	38707	38267	39201
ZINC 31OCT2017	BEARISH	187.86	188.48	189.58	187.38	186.76	186.28	185.18	187.25
ZINC 29SEP2017	BULLISH	188.06	188.73	190.48	186.98	186.31	185.23	183.48	187.4
ZINC 31AUG2017	BULLISH	187.36	188.08	189.83	186.33	185.61	184.58	182.83	186.65

Registered Office:#15-8-1/2/3, 2nd floor, Slddiamber Bazar, Hyderabad - 500012, Telangana State. INDIA.

Corporate Office: #3-6-196/197, Pnme Plaza, 2nd floor, flat No. 204 A & B, H1mayath Nagar, Hyderabad - 500029, Telangana State.INDIA.

Ph:+91-40-64645000,Fax: +91-40-23262166,E-mail:support@basanonline.com,Website:[www.basanonline.com](http://www.basanonline.com)



# BASAN COMMODITY LIMITED

DAILY COMMODITY REPORT 16th Aug 2017

COMMODITIES	TREND	R1	R2	R3	PIVOT POINT	S1	S2	S3	Close
ZINCMINI 31OCT2017	BULLISH	187.7	188.25	189.45	187.05	186.5	185.85	184.65	187.15
ZINCMINI 29SEP2017	BULLISH	187.93	188.61	190.36	186.86	186.18	185.11	183.36	187.25
ZINCMINI 31AUG2017	BULLISH	187.36	188.08	189.83	186.33	185.61	184.58	182.83	186.65

Registered Office:#15-8-1/2/3, 2nd floor, Slddiamber Bazar, Hyderabad - 500012, Telangana State. INDIA.

Corporate Office: #3-6-196/197, Pnme Plaza, 2nd floor, flat No. 204 A & B, H1mayath Nagar, Hyderabad - 500029, Telangana State.INDIA.

Ph:+91-40-64645000,Fax: +91-40-23262166,E-mail:support@basanonline.com,Website:[www.basanonline.com](http://www.basanonline.com)