



# BASAN EQUITY BROKING LIMITED

DAILY EQUITY REPORT 16th Aug 2017

## NIFTY POSITIVE

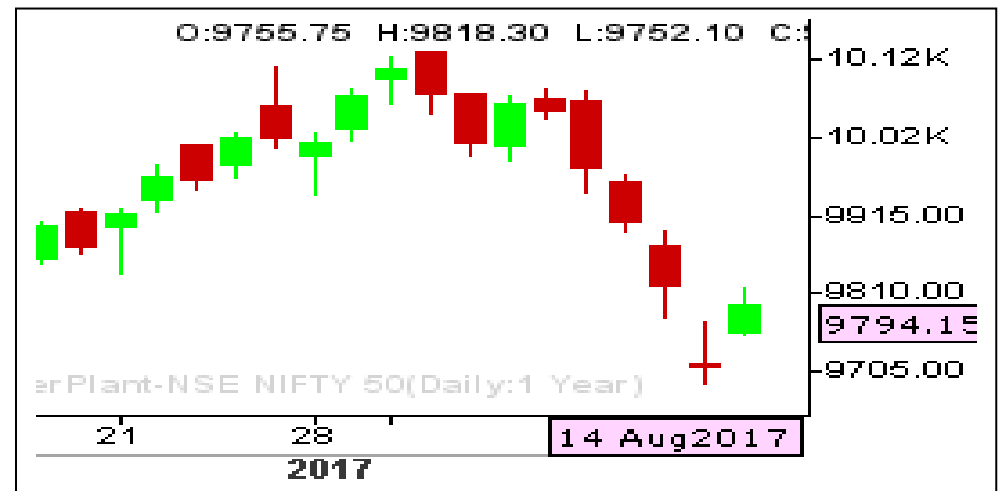
RANGE : 9685 - 9980

### What Chart Says :

Benchmark Nifty has found strong base at 9685-9700 and gained its positive momentum on Monday and finally settled at 9794.15 levels. For the day trend remains firm targeting 9915 levels initially followed by 9980 levels.

Any strong close below 9700 can only be considered as the bearish trend.

*Buy on dips till price manages to trade above 9700 for 9980 levels.*



## BANK NIFTY BULLISH FOR THE DAY

RANGE : 23800 - 25000

### What Chart Says :

Trend remains firm and Bank Nifty is likely to continue its gains towards 24500 followed by 25000 levels in near term. Alternatively any strong close below 23800 only can change our bullish bias.

*BUY on dips with stop below 23800 for the price objective of 25000 levels.*



Registered Office:#15-8-1/2/3, 2nd floor, Sliddiamber Bazar, Hyderabad - 500012, Telangana State. INDIA.

Corporate Office: #3-6-196/197, Pnme Plaza, 2nd floor, flat No. 204 A & B, H1mayath Nagar, Hyderabad - 500029, Telangana State.INDIA.

Ph:+91-40-64645000,Fax: +91-40-23262166,E-mail:support@basanonline.com,Website:[www.basanonline.com](http://www.basanonline.com)



# BASAN EQUITY BROKING LIMITED

DAILY EQUITY REPORT 16th Aug 2017

## CASH GRAPHITE

STOP : 224.00

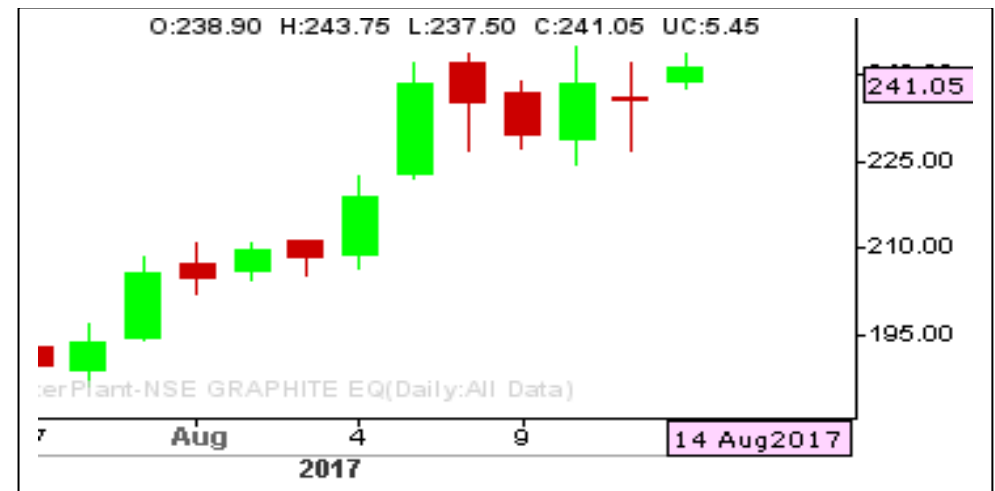
TARGET : 280

What Chart Says :

Buy Graphite on dips with stop below 224, targeting 280.

Hold MAHASTEEL longs initiated at 84.40 and on dips to 80.00 with stop below 66.00, targets 105 followed by 130.00 levels. CMP:88.20

Hold AUTOIND till price manages to trade above 70.00 with stop below 57.00, targeting 96.00. CMP:78.30



## FUTURES BUY HAVELLS

STOP : 453

TARGET : 490

What Chart Says :

Buy HAVELLS with stop below 460 targeting 490 levels.

EXIT STAR Sells at CMP:910.

Holding AMBUJA CEMENT for the price objective of 284 levels with stop below 260. CMP : 264.65.



Registered Office:#15-8-1/2/3, 2nd floor, Sliddiamber Bazar, Hyderabad - 500012, Telangana State. INDIA.

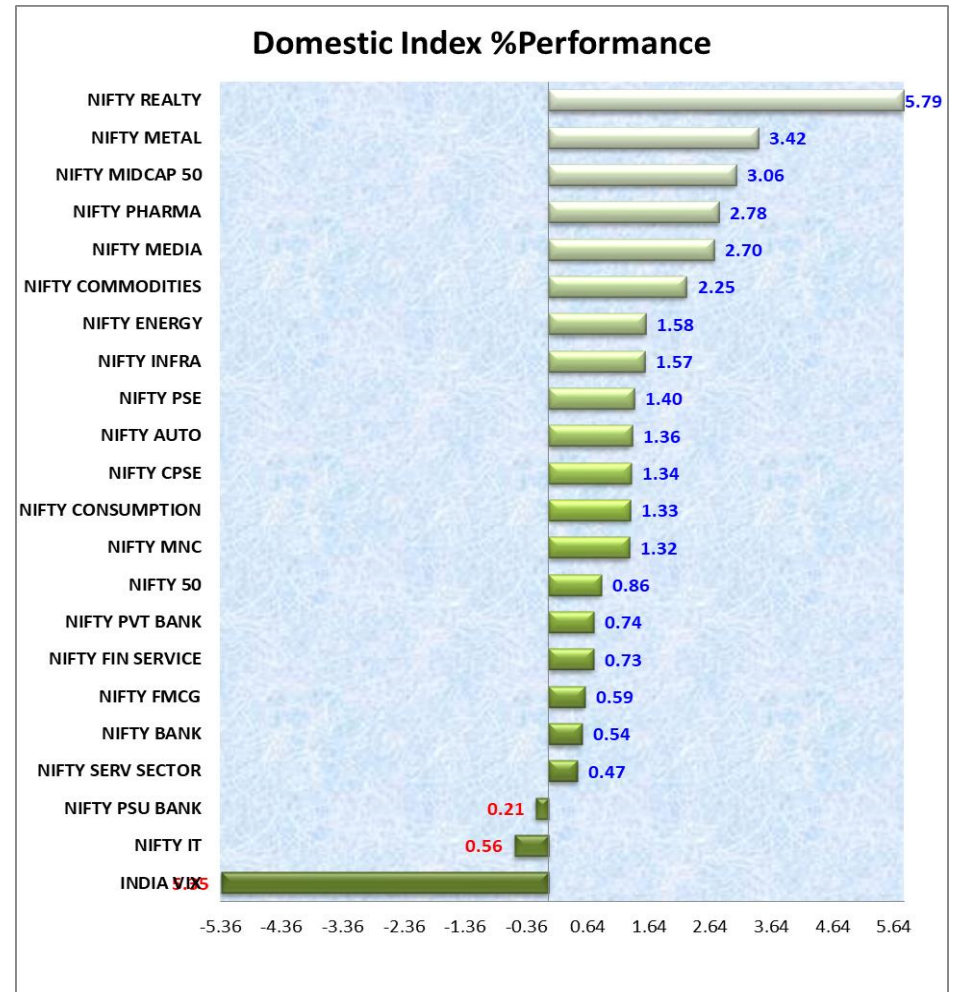
Corporate Office: #3-6-196/197, Pnme Plaza, 2nd floor, flat No. 204 A & B, H1mayath Nagar, Hyderabad - 500029, Telangana State.INDIA.

Ph:+91-40-64645000,Fax: +91-40-23262166,E-mail:support@basanonline.com,Website:[www.basanonline.com](http://www.basanonline.com)

- Long Build up was found in RCOM, BEML, PCJEWELLER and TATAGLOBAL
- Short Covering was observed in DLF, SUZLON, SINTEX, TATACOMM
- Short Built up was identified in ICIL, APOLLOHOSP, BOSCHLTD, MFSL
- Long Unwinding was seen in FORTIS, BHARATIARTL, WIPRO and DRREDDY
- INDEX Drivers are CIPLA, SUN PHARMA, TATA STEEL, TATA POWER, HINDALCO, VEDL.

**NIFTY OPTION STRATEGY : HOLD BUY NIFTY 9800 CALL bought at 86.50 and SELL 10000 CALL sold at 25. CMP: 111.50 and 30.45 respectively.**

]



Registered Office:#15-8-1/2/3, 2nd floor, Sliddiamber Bazar, Hyderabad - 500012, Telangana State. INDIA.

Corporate Office: #3-6-196/197, Pnme Plaza, 2nd floor, flat No. 204 A & B, H1mayath Nagar, Hyderabad - 500029, Telangana State.INDIA.

Ph:+91-40-64645000,Fax: +91-40-23262166,E-mail:support@basanonline.com,Website:[www.basanonline.com](http://www.basanonline.com)



# BASAN EQUITY BROKING LIMITED

DAILY EQUITY REPORT 16th Aug 2017

NIFTY 50	TREND	R1	R2	R3	PIVOT POINT	S1	S2	S3	Close	Prev.Close	%Chg
ACC	BULLISH	1786.67	1812.78	1858.23	1767.33	1741.22	1721.88	1676.43	1784.8	1760.55	1.38
ADANI PORTS	BULLISH	385.78	388.82	395.22	382.42	379.38	376.02	369.62	396.2	382.75	3.51
AMBUJACEM	BULLISH	267.05	270.75	276.7	264.8	261.1	258.85	252.9	265.1	263.35	0.66
ASIANPAINT	BULLISH	1154.7	1165.5	1193.05	1137.95	1127.15	1110.4	1082.85	1154	1143.9	0.88
AUROPHARMA	BULLISH	721.13	737.27	779.77	694.77	678.63	652.27	609.77	714.5	705	1.35
AXISBANK	BULLISH	495.37	501.03	514.38	487.68	482.02	474.33	460.98	491.75	489.7	0.42
BAJAJ-AUTO	BULLISH	2807.77	2827.33	2875.78	2778.88	2759.32	2730.43	2681.98	2831.6	2788.2	1.56
BANKBARODA	BEARISH	148.1	153.95	163.25	144.65	138.8	135.35	126.05	142.25	142.25	0
BHARTIARTL	BEARISH	418.37	422.18	430.18	414.18	410.37	406.18	398.18	408.55	414.55	-1.45
BOSCHLTD	BEARISH	23403.4	24183.5	25535.7	22831.38	22051.2	21479.2	20127.1	22138.1	22623.2	-2.14
BPCL	BEARISH	493.48	502.67	522.57	482.77	473.58	462.87	442.97	478.35	484.3	-1.23
CIPLA	BULLISH	561.58	581.77	620.02	543.52	523.33	505.27	467.02	570.05	541.4	5.29
COALINDIA	BULLISH	239.63	243.37	250.07	236.67	232.93	229.97	223.27	238.15	235.9	0.95
DRREDDY	BULLISH	2060.35	2109.55	2238.35	1980.75	1931.55	1851.95	1723.15	2002.05	2011.15	-0.45
EICHERMOT	BULLISH	30106.4	30585.5	31550.1	29620.92	29141.8	28656.3	27691.7	30385.6	29627.35	2.56
GAIL	BULLISH	376.35	383.75	401.45	366.05	358.65	348.35	330.65	372.5	368.95	0.96
HCLTECH	BEARISH	886.15	900	924.65	875.35	861.5	850.7	826.05	860.1	872.3	-1.4
HDFC	BULLISH	1709.4	1723.45	1751.5	1695.4	1681.35	1667.35	1639.3	1713.95	1695.35	1.1
HDFCBANK	BULLISH	1760.98	1772.92	1799.77	1746.07	1734.13	1719.22	1692.37	1757.2	1749.05	0.47
HEROMOTOCO	BULLISH	3880.57	3920.23	4001.83	3838.63	3798.97	3757.03	3675.43	3957.05	3840.9	3.02
HINDALCO	BULLISH	231.33	241.67	258.67	224.67	214.33	207.67	190.67	229.15	221	3.69
HINDUNILVR	BEARISH	1170.55	1188.3	1219.55	1157.05	1139.3	1125.8	1094.55	1155.7	1152.8	0.25
IBULHSGFIN	BULLISH	1187.53	1225.17	1328.32	1122.02	1084.38	1018.87	915.72	1175.75	1149.9	2.25
ICICIBANK	BULLISH	290.97	294.98	304.33	285.63	281.62	276.28	266.93	291.8	286.95	1.69
INDUSINDBK	BULLISH	1639.57	1653.78	1688.28	1619.28	1605.07	1584.78	1550.28	1624.7	1625.35	-0.04
INFRATEL	BEARISH	385.33	388.37	396.02	380.72	377.68	373.07	365.42	379.85	382.3	-0.64
INFY	BEARISH	999.93	1012.17	1039.57	984.77	972.53	957.37	929.97	981.45	987.7	-0.63
IOC	BULLISH	417.02	422.23	434.18	410.28	405.07	398.33	386.38	419.45	411.8	1.86
ITC	BEARISH	273.93	276.37	280.72	272.02	269.58	267.67	263.32	271.25	271.5	-0.09
KOTAKBANK	BEARISH	1001.92	1011.63	1035.53	987.73	978.02	963.83	939.93	982.6	992.2	-0.97
LT	BULLISH	1142.27	1152.58	1171.43	1133.73	1123.42	1114.88	1096.03	1146.9	1131.95	1.32
LUPIN	BULLISH	957.17	973.43	1008.28	938.58	922.32	903.73	868.88	966.85	940.9	2.76
M&M	BEARISH	1376.1	1404.15	1450.25	1358.05	1330	1311.95	1265.85	1355.75	1348.05	0.57
MARUTI	BULLISH	7534.13	7610.87	7764.67	7457.07	7380.33	7303.27	7149.47	7608.45	7457.4	2.03
NTPC	BULLISH	171.95	175.05	180.4	169.7	166.6	164.35	159	171.75	168.85	1.72
ONGC	BULLISH	161.6	163.55	167.05	160.05	158.1	156.55	153.05	161.7	159.65	1.28
POWERGRID	BULLISH	222.27	225.63	234.13	217.13	213.77	208.63	200.13	222.75	218.9	1.76

Registered Office:#15-8-1/2/3, 2nd floor, Sliddiamber Bazar, Hyderabad - 500012, Telangana State. INDIA.

Corporate Office: #3-6-196/197, Pnme Plaza, 2nd floor, flat No. 204 A & B, H1mayath Nagar, Hyderabad - 500029, Telangana State.INDIA.

Ph:+91-40-64645000,Fax: +91-40-23262166,E-mail:support@basanonline.com,Website:[www.basanonline.com](http://www.basanonline.com)



## BASAN EQUITY BROKING LIMITED

DAILY EQUITY REPORT 16th Aug 2017

NIFTY 50	TREND	R1	R2	R3	PIVOT POINT	S1	S2	S3	Close	Prev.Close	%Chg
RELIANCE	BULLISH	1573.17	1600.08	1647.08	1553.08	1526.17	1506.08	1459.08	1573.05	1546.25	1.73
SBIN	BEARISH	296.28	312.42	337.97	286.87	270.73	261.32	235.77	278.2	280.15	-0.7
SUNPHARMA	BULLISH	460.43	470.87	489.22	452.52	442.08	434.17	415.82	471.8	450	4.84
TATAMOTORS	BULLISH	382.9	391.3	411.9	370.7	362.3	350.1	329.5	375.4	374.5	0.24
TATAMTRDVR	BULLISH	227.23	231.27	242.37	220.17	216.13	209.07	197.97	226.45	223.2	1.46
TATAPOWER	BULLISH	77.15	77.75	79	76.5	75.9	75.25	74	79.55	76.55	3.92
TATASTEEL	BULLISH	604.72	612.68	627.38	597.98	590.02	583.28	568.58	623.75	596.75	4.52
TCS	BEARISH	2526.37	2556.68	2608.68	2504.68	2474.37	2452.68	2400.68	2469.4	2496.05	-1.07
TECHM	BEARISH	410.03	417.27	429.02	405.52	398.28	393.77	382.02	402.2	402.8	-0.15
ULTRACEMCO	BULLISH	3983.6	4044.65	4176.35	3912.95	3851.9	3781.25	3649.55	3960.5	3922.55	0.97
VEDL	BULLISH	290.23	301.37	319.32	283.42	272.28	265.47	247.52	289.15	279.1	3.6
WIPRO	BEARISH	293.6	297.5	304.35	290.65	286.75	283.8	276.95	288.5	289.7	-0.41
YESBANK	BULLISH	1763.75	1788.1	1843.25	1732.95	1708.6	1677.8	1622.65	1778.5	1739.4	2.25
ZEEL	BULLISH	515.35	525.8	542.6	509	498.55	492.2	475.4	517.2	504.9	2.44

Registered Office:#15-8-1/2/3, 2nd floor, Sliddiamber Bazar, Hyderabad - 500012, Telangana State. INDIA.

Corporate Office: #3-6-196/197, Pnme Plaza, 2nd floor, flat No. 204 A & B, H1mayath Nagar, Hyderabad - 500029, Telangana State.INDIA.

Ph:+91-40-64645000,Fax: +91-40-23262166,E-mail:support@basanonline.com,Website:[www.basanonline.com](http://www.basanonline.com)



## BASAN EQUITY BROKING LIMITED

DAILY EQUITY REPORT 16th Aug 2017

Registered Office:#15-8-1/2/3, 2nd floor, Slddiamber Bazar, Hyderabad - 500012, Telangana State. INDIA.  
Corporate Office: #3-6-196/197, Pnme Plaza, 2nd floor, flat No. 204 A & B, H1mayath Nagar, Hyderabad - 500029, Telangana State.INDIA.  
Ph:+91-40-64645000,Fax: +91-40-23262166,E-mail:support@basanonline.com,Website:[www.basanonline.com](http://www.basanonline.com)