



# BASAN COMMODITY LIMITED

DAILY COMMODITY REPORT 9th Aug 2017

## GOLD WEAK FOR THE DAY

STOP : 28600

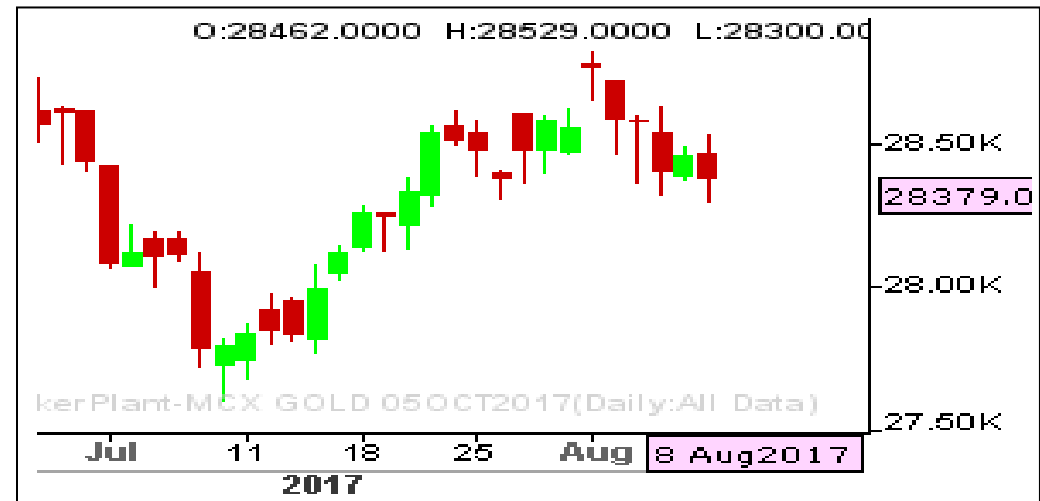
TARGET : 28020

### What Chart Says :

Oct Gold settled at 28379 levels by posting a days low of 28300 levels. Yellow metal has been struggling to breach key 28300 supports for the third time since 26th July. To attract further selling interest prices needs to clear 28300 levels, failure of which can push prices higher again.

For the day trend remains mixed and Oct contract is expected to trade sideways between 28300 - 28500 levels.

**Hold remaining sells with breakeven stops for 28020 levels for sells initiated at 28700.**



## SILVER BEARISH

STOP : 37800

TARGET : 36400

### What Chart Says :

Sep Silver prices has turned weak and tested 37000 levels. On Tuesday Sep Silver has settled little higher at 37499, gained by posting a low of 37176 levels.

Overall trend remains weak targeting 36980 followed by 36400 levels. But for the day prices could trade higher in the initial session towards 37780-37800 levels before continue its bearish trend.

**Hold remaining sells with breakeven stops for 36400, sells initiated at 38300.**



Registered Office:#15-8-1/2/3, 2nd floor, Sliddiamber Bazar, Hyderabad - 500012, Telangana State. INDIA.

Corporate Office: #3-6-196/197, Pnme Plaza, 2nd floor, flat No. 204 A & B, H1mayath Nagar, Hyderabad - 500029, Telangana State.INDIA.

Ph:+91-40-64645000,Fax: +91-40-23262166,E-mail:support@basanonline.com,Website:[www.basanonline.com](http://www.basanonline.com)

## CRUDE OIL WEAK

STOP : 3240

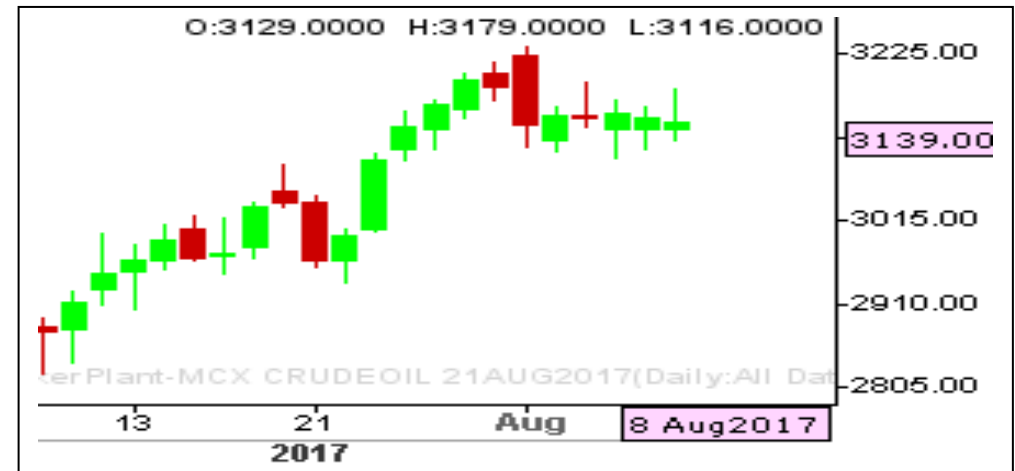
TARGET : 3020

### What Chart Says :

Aug Crude Oil trend remains weak and is likely to extend its declines towards 3105 followed by 3020 levels in the coming sessions.

Any corrective gains could be limited to 3180-3190 levels. To attract any buying interest price needs to close over 3190 levels on daily close basis.

**Hold Sells initiated at 3170 levels and add fresh sells with stop above 3240 for the targets of 3020 levels.**



## ZINC SIDEWAYS TO HIGHER

STOP : 184

TARGET : 190

### What Chart Says :

Aug Zinc prices are likely to trade sideways to higher towards 190 levels as price has settled well above key 185.30 levels, leaving room for further advancements.

Any corrective declines could halt at 185.30-185 levels.

**Buy on dips to 185.30 with the price objective of 190 with stop below 184.**





# BASAN COMMODITY LIMITED

DAILY COMMODITY REPORT 9th Aug 2017

COMMODITIES	TREND	R1	R2	R3	PIVOT POINT	S1	S2	S3	Close
ALUMINI 31OCT2017	BULLISH	130.51	131.78	134.83	128.73	127.46	125.68	122.63	129.25
ALUMINI 29SEP2017	BULLISH	130.65	132.1	136	128.2	126.75	124.3	120.4	129.2
ALUMINI 31AUG2017	BULLISH	130.31	131.83	135.88	127.78	126.26	123.73	119.68	128.8
ALUMINIUM 31OCT2017	BEARISH	129.73	131.41	134.71	128.11	126.43	124.81	121.51	128.05
ALUMINIUM 29SEP2017	BULLISH	130.7	132.2	136.2	128.2	126.7	124.2	120.2	129.2
ALUMINIUM 31AUG2017	BULLISH	130.31	131.83	135.88	127.78	126.26	123.73	119.68	128.8
CARDAMOM 13OCT2017	BULLISH	1054.93	1060.26	1073.06	1047.46	1042.13	1034.66	1021.86	1049.6
CARDAMOM 15SEP2017	BULLISH	1110.63	1121.26	1148.16	1094.36	1083.73	1067.46	1040.56	1100
CARDAMOM 14AUG2017	BEARISH	1159.4	1165.2	1176.2	1154.2	1148.4	1143.2	1132.2	1153.6
COPPER 28FEB2018	BEARISH	424.43	427.26	432.31	422.21	419.38	417.16	412.11	421.6
COPPER 30NOV2017	BULLISH	422.51	424.88	431.43	418.33	415.96	411.78	405.23	420.15
COPPER 31AUG2017	BULLISH	416.61	419.18	426.23	412.13	409.56	405.08	398.03	414.05
COPPERM 28FEB2018	BULLISH	426.96	429.18	434.88	423.48	421.26	417.78	412.08	424.75
COPPERM 30NOV2017	BULLISH	422.6	425	431.6	418.4	416	411.8	405.2	420.2
COPPERM 31AUG2017	BULLISH	416.7	419.35	426.5	412.2	409.55	405.05	397.9	414.05
COTTON 29DEC2017	BULLISH	18373.3	18426.7	18536.7	18316.66	18263.3	18206.7	18096.7	18320
COTTON 30NOV2017	BULLISH	18456.7	18513.3	18663.3	18363.33	18306.7	18213.3	18063.3	18400
COTTON 31OCT2017	BULLISH	18936.7	19003.3	19183.3	18823.33	18756.7	18643.3	18463.3	18870
CPO 31OCT2017	BULLISH	489.5	491	494.5	487.5	486	484	480.5	488
CPO 29SEP2017	BULLISH	490.06	492.33	497.13	487.53	485.26	482.73	477.93	487.8
CPO 31AUG2017	BULLISH	489.83	492.36	497.46	487.26	484.73	482.16	477.06	487.3
CRUDEOIL 18DEC2017	BULLISH	3265.33	3280.66	3311.66	3249.66	3234.33	3218.66	3187.66	3250
CRUDEOIL 17NOV2017	BULLISH	3230	3239	3257	3221	3212	3203	3185	3221
CRUDEOIL 18OCT2017	BEARISH	3218	3244	3294	3194	3168	3144	3094	3192
CRUDEOIL 19SEP2017	BEARISH	3194	3226	3285	3167	3135	3108	3049	3162
CRUDEOIL 21AUG2017	BEARISH	3173.33	3207.66	3270.66	3144.66	3110.33	3081.66	3018.66	3139
CRUDEOILM 18DEC2017	BEARISH	3259.33	3271.66	3295.66	3247.66	3235.33	3223.66	3199.66	3247
CRUDEOILM 17NOV2017	BULLISH	3220	3234	3262	3206	3192	3178	3150	3206
CRUDEOILM 18OCT2017	BEARISH	3218	3245	3296	3194	3167	3143	3092	3191
CRUDEOILM 19SEP2017	BEARISH	3193.66	3225.33	3283.33	3167.33	3135.66	3109.33	3051.33	3162
CRUDEOILM 21AUG2017	BEARISH	3173.33	3207.66	3270.66	3144.66	3110.33	3081.66	3018.66	3139
GOLD 05DEC2017	BEARISH	28499.3	28603.7	28779.7	28427.66	28323.3	28251.7	28075.7	28395
GOLD 05OCT2017	BEARISH	28505.3	28631.7	28860.7	28402.66	28276.3	28173.7	27944.7	28379
GOLDGUINEA 29SEP2017	BEARISH	22861.3	22980.7	23195.7	22765.66	22646.3	22550.7	22335.7	22742
GOLDGUINEA 31AUG2017	BEARISH	22669	22722	22818	22626	22573	22530	22434	22616
GOLDM 05OCT2017	BEARISH	28514.3	28628.7	28831.7	28425.66	28311.3	28222.7	28019.7	28400
GOLDM 05SEP2017	BEARISH	28475	28593	28807	28379	28261	28165	27951	28357

Registered Office:#15-8-1/2/3, 2nd floor, Slddiamber Bazar, Hyderabad - 500012, Telangana State. INDIA.

Corporate Office: #3-6-196/197, Pnme Plaza, 2nd floor, flat No. 204 A & B, H1mayath Nagar, Hyderabad - 500029, Telangana State.INDIA.

Ph:+91-40-64645000,Fax: +91-40-23262166,E-mail:support@basanonline.com,Website:[www.basanonline.com](http://www.basanonline.com)



# BASAN COMMODITY LIMITED

DAILY COMMODITY REPORT 9th Aug 2017

COMMODITIES	TREND	R1	R2	R3	PIVOT POINT	S1	S2	S3	Close
GOLDPETAL 30NOV2017	BEARISH	2932	2967	3024	2910	2875	2853	2796	2897
GOLDPETAL 29SEP2017	BEARISH	2847.33	2851.66	2859.66	2843.66	2839.33	2835.66	2827.66	2843
GOLDPETAL 31AUG2017	BEARISH	2827.66	2832.33	2840.33	2824.33	2819.66	2816.33	2808.33	2823
LEAD 31OCT2017	BEARISH	152.51	152.63	152.83	152.43	152.31	152.23	152.03	152.4
LEAD 29SEP2017	BULLISH	153.6	154.7	157.8	151.6	150.5	148.5	145.4	152.5
LEAD 31AUG2017	BULLISH	153.3	154.8	158.6	151	149.5	147.2	143.4	151.8
LEADMINI 31OCT2017	BEARISH	151.73	152.41	153.71	151.11	150.43	149.81	148.51	151.05
LEADMINI 29SEP2017	BULLISH	153.56	154.68	157.78	151.58	150.46	148.48	145.38	152.45
LEADMINI 31AUG2017	BULLISH	153.06	154.28	157.58	150.98	149.76	147.68	144.38	151.85
MENTHAOIL 30NOV2017	BEARISH	1180.26	1190.03	1206.63	1173.43	1163.66	1156.83	1140.23	1170.5
MENTHAOIL 31OCT2017	BEARISH	1177.76	1196.03	1224.63	1167.43	1149.16	1138.83	1110.23	1159.5
MENTHAOIL 29SEP2017	BEARISH	1167.2	1187.4	1219.2	1155.6	1135.4	1123.8	1092	1147
MENTHAOIL 31AUG2017	BEARISH	1158.16	1181.93	1219.53	1144.33	1120.56	1106.73	1069.13	1134.4
NATURALGAS 26OCT2017	BEARISH	189.9	191.3	194	188.6	187.2	185.9	183.2	188.5
NATURALGAS 26SEP2017	BULLISH	184.53	186.06	189.36	182.76	181.23	179.46	176.16	183
NATURALGAS 28AUG2017	BULLISH	181.53	182.96	186.26	179.66	178.23	176.36	173.06	180.1
NICKEL 31OCT2017	BULLISH	700	710.7	739.1	682.3	671.6	653.9	625.5	689.3
NICKEL 29SEP2017	BULLISH	699.86	711.33	743.13	679.53	668.06	647.73	615.93	688.4
NICKEL 31AUG2017	BULLISH	695.56	707.13	739.33	674.93	663.36	642.73	610.53	684
NICKELM 31OCT2017	BULLISH	698.3	709.8	737.6	682	670.5	654.2	626.4	686.8
NICKELM 29SEP2017	BULLISH	699.76	711.13	742.63	679.63	668.26	648.13	616.63	688.4
NICKELM 31AUG2017	BULLISH	695.5	707	739	675	663.5	643	611	684
PEPPER 18OCT2017	BEARISH	48391.7	48873.3	49823.3	47923.33	47441.7	46973.3	46023.3	47910
PEPPER 20SEP2017	BEARISH	48756.7	49328.3	50323.3	48333.33	47761.7	47338.3	46343.3	48185
RBDPMOLEIN 31AUG2017	BULLISH	527.6	528.9	531.5	526.3	525	523.7	521.1	526.3
SILVER 05DEC2017	BULLISH	38276.3	38470.7	38935.7	38005.66	37811.3	37540.7	37075.7	38082
SILVER 05SEP2017	BULLISH	37690.7	37882.3	38331.3	37433.33	37241.7	36984.3	36535.3	37499
SILVERM 28FEB2018	BULLISH	38682	38722	38802	38642	38602	38562	38482	38642
SILVERM 30NOV2017	BULLISH	38250.3	38427.7	38842.7	38012.66	37835.3	37597.7	37182.7	38073
SILVERM 31AUG2017	BULLISH	37708.3	37900.7	38359.7	37441.66	37249.3	36982.7	36523.7	37516
SILVERMIC 28FEB2018	BULLISH	38752	38926	39276	38576	38402	38226	37876	38578
SILVERMIC 30NOV2017	BULLISH	38253.7	38424.3	38834.3	38014.33	37843.7	37604.3	37194.3	38083
SILVERMIC 31AUG2017	BULLISH	37705	37897	38348	37446	37254	36995	36544	37513
ZINC 31OCT2017	BEARISH	187.4	189.75	194.05	185.45	183.1	181.15	176.85	185.05
ZINC 29SEP2017	BULLISH	189	190.7	195.5	185.9	184.2	181.1	176.3	187.3
ZINC 31AUG2017	BULLISH	188.71	190.48	195.43	185.53	183.76	180.58	175.63	186.95
ZINCMINI 31OCT2017	BULLISH	188.98	190.46	194.61	186.31	184.83	182.16	178.01	187.5

Registered Office:#15-8-1/2/3, 2nd floor, Slddiamber Bazar, Hyderabad - 500012, Telangana State. INDIA.

Corporate Office: #3-6-196/197, Pnme Plaza, 2nd floor, flat No. 204 A & B, H1mayath Nagar, Hyderabad - 500029, Telangana State.INDIA.

Ph:+91-40-64645000,Fax: +91-40-23262166,E-mail:support@basanonline.com,Website:[www.basanonline.com](http://www.basanonline.com)



# BASAN COMMODITY LIMITED

DAILY COMMODITY REPORT 9th Aug 2017

COMMODITIES	TREND	R1	R2	R3	PIVOT POINT	S1	S2	S3	Close
ZINCMINI 29SEP2017	BULLISH	188.96	190.58	195.28	185.88	184.26	181.18	176.48	187.35
ZINCMINI 31AUG2017	BULLISH	188.66	190.33	195.13	185.53	183.86	180.73	175.93	187

Registered Office:#15-8-1/2/3, 2nd floor, Slddiamber Bazar, Hyderabad - 500012, Telangana State. INDIA.  
Corporate Office: #3-6-196/197, Pnme Plaza, 2nd floor, flat No. 204 A & B, H1mayath Nagar, Hyderabad - 500029, Telangana State.INDIA.  
Ph:+91-40-64645000,Fax: +91-40-23262166,E-mail:support@basanonline.com,Website:[www.basanonline.com](http://www.basanonline.com)