

GOLD WEAK FOR THE DAY

STOP : 28600

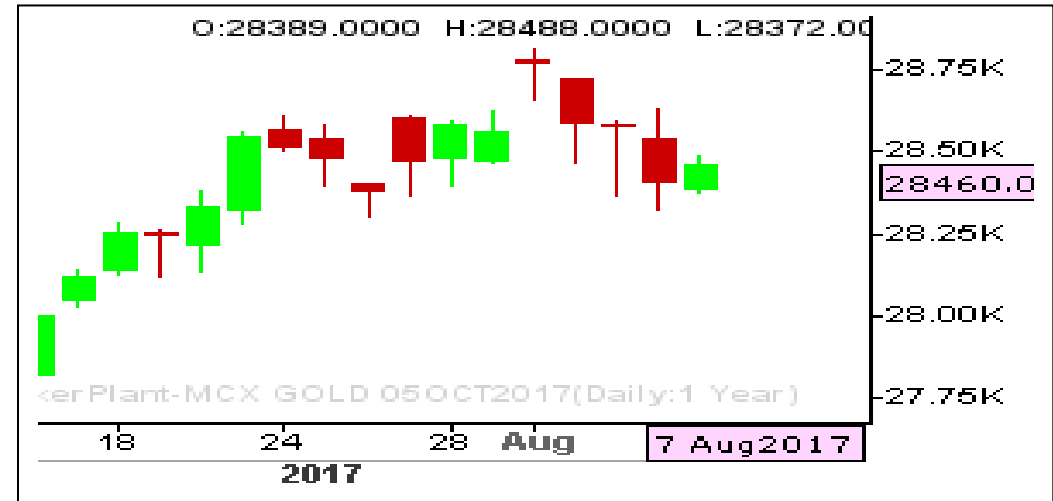
TARGET : 28020

What Chart Says :

Oct Gold settled at 28460 levels by posting a days low of 28372 levels. Yellow metal has been struggling to breach key 28300 supports for the second time since 26th July. To attract further selling interest prices needs to clear 28300 levels, failure of which can push prices higher again.

There is high probability that prices could break down and sustain below 28300 with the price objective of 28020 levels. Resistance is seen at 28500 levels.

Initial targets attained (28490) for Sells initiated at 28700 levels, hold remaining with breakeven stops for 28020 levels.



SILVER BEARISH

STOP : 37650

TARGET : 36400

What Chart Says :

As expected Sep Silver prices has turned weak and tested 37000 levels. On Monday's price Sep Silver has settled at 37265 levels. For the day trend remains weak targeting 36980 followed by 36400 levels. Any short term corrective gains can't be ruled out towards 37500 levels.

Hold remaining sells with breakeven stops for 36400, sells initiated at 38300. Part profits booked at 37200 levels.



Registered Office:#15-8-1/2/3, 2nd floor, Sliddiamber Bazar, Hyderabad - 500012, Telangana State. INDIA.

Corporate Office: #3-6-196/197, Pnme Plaza, 2nd floor, flat No. 204 A & B, H1mayath Nagar, Hyderabad - 500029, Telangana State.INDIA.

Ph:+91-40-64645000,Fax: +91-40-23262166,E-mail:support@basanonline.com,Website:www.basanonline.com

CRUDE OIL WEAK

STOP : 3240

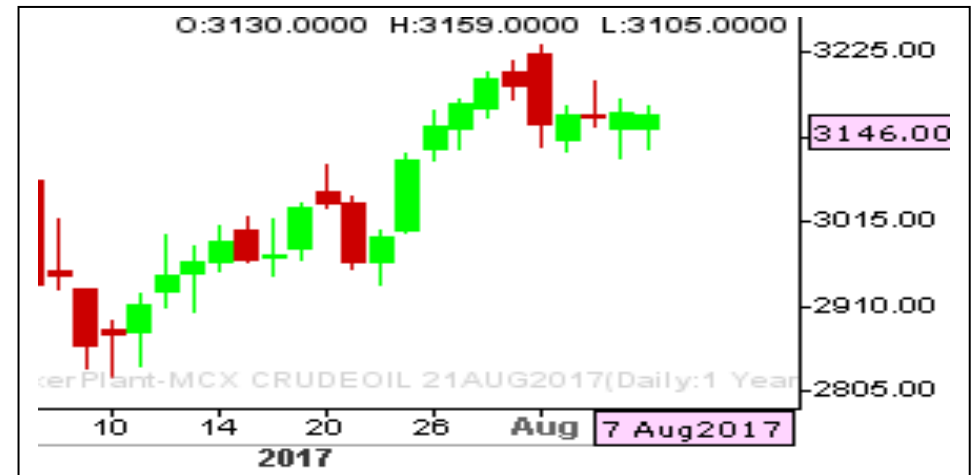
TARGET : 3020

What Chart Says :

Aug Crude Oil trend remains weak and is likely to extend its declines towards 3105 followed by 3020 levels in the coming sessions.

Any corrective gains could be limited to 3180-3190 levels. To attract any buying interest price needs to close over 3190 levels on daily close basis.

Hold Sells initiated at 3170 levels with stop above 3240 for the targets of 3020 levels



ZINC SIDE WAYS TO HIGHER

STOP : 182

TARGET : 175

What Chart Says :

Aug Zinc prices are likely to trade sideways between 185 - 180 levels as overall trend remains still mixed for the short term.

We are expecting for the day prices could trade sideways to higher towards 185 by testing 182-181.50 levels down..

Our Stops triggered (182) for the sells initiated at 179.50-180 levels. Awaiting for fresh entry.





BASAN COMMODITY LIMITED

DAILY COMMODITY REPORT 8th Aug 2017

COMMODITIES	TREND	R1	R2	R3	PIVOT POINT	S1	S2	S3	Close
ALUMINI 29SEP2017	BULLISH	122.33	122.81	123.61	122.01	121.53	121.21	120.41	125.95
ALUMINI 31AUG2017	BULLISH	121.56	122.08	122.88	121.28	120.76	120.48	119.68	125.45
ALUMINIUM 29SEP2017	BULLISH	122.38	122.86	123.71	122.01	121.53	121.16	120.31	126
ALUMINIUM 31AUG2017	BULLISH	121.58	122.06	122.86	121.26	120.78	120.46	119.66	125.55
CARDAMOM 15NOV2017	BULLISH	1050.13	1050.16	1050.26	1050.06	1050.03	1049.96	1049.86	1050.1
CARDAMOM 13OCT2017	BEARISH	1079.8	1099.9	1132.9	1066.9	1046.8	1033.9	1000.9	1053.7
CARDAMOM 15SEP2017	BEARISH	1132.63	1158.66	1200.46	1116.86	1090.83	1075.06	1033.26	1095.4
CARDAMOM 14AUG2017	BEARISH	1176.8	1197.7	1236.5	1158.9	1138	1120.1	1081.3	1143.5
COPPER 30NOV2017	BULLISH	415.13	417.11	421.56	412.66	410.68	408.21	403.76	417.2
COPPER 31AUG2017	BULLISH	408.73	410.76	415.31	406.21	404.18	401.66	397.11	410.55
COPPERM 28FEB2018	BULLISH	418.83	419.21	420.06	418.36	417.98	417.51	416.66	422.55
COPPERM 30NOV2017	BULLISH	415.06	417.03	421.43	412.63	410.66	408.23	403.83	417
COPPERM 31AUG2017	BULLISH	408.78	410.81	415.36	406.26	404.23	401.71	397.16	410.5
COTTON 29DEC2017	BULLISH	18210	18260	18400	18120	18070	17980	17840	18310
COTTON 30NOV2017	BULLISH	18176.7	18223.3	18343.3	18103.33	18056.7	17983.3	17863.3	18320
COTTON 31OCT2017	BULLISH	18620	18670	18790	18550	18500	18430	18310	18780
CPO 31OCT2017	BULLISH	483.06	484.53	488.03	481.03	479.56	477.53	474.03	484.1
CPO 29SEP2017	BULLISH	483.8	486.3	492.6	480	477.5	473.7	467.4	483.7
CPO 31AUG2017	BULLISH	484.33	487.16	494.56	479.76	476.93	472.36	464.96	483.3
CRUDEOIL 17NOV2017	BULLISH	3189.33	3190.66	3193.66	3187.66	3186.33	3184.66	3181.66	3200
CRUDEOIL 18OCT2017	BULLISH	3217.66	3237.33	3291.33	3183.33	3163.66	3129.33	3075.33	3191
CRUDEOIL 19SEP2017	BULLISH	3197.66	3225.33	3293.33	3157.33	3129.66	3089.33	3021.33	3168
CRUDEOIL 21AUG2017	BULLISH	3178	3207	3278	3136	3107	3065	2994	3146
CRUDEOILM 17NOV2017	BULLISH	3223.66	3253.33	3318.33	3188.33	3158.66	3123.33	3058.33	3189
CRUDEOILM 18OCT2017	BULLISH	3223	3248	3312	3184	3159	3120	3056	3191
CRUDEOILM 19SEP2017	BULLISH	3197.66	3225.33	3293.33	3157.33	3129.66	3089.33	3021.33	3168
CRUDEOILM 21AUG2017	BULLISH	3177.33	3206.66	3277.66	3135.66	3106.33	3064.66	2993.66	3146
GOLD 05FEB2018	BULLISH	28624.3	28743.7	28996.7	28490.66	28371.3	28237.7	27984.7	28505
GOLD 05DEC2017	BEARISH	28586.3	28724.7	28968.7	28480.66	28342.3	28236.7	27992.7	28446
GOLD 05OCT2017	BULLISH	28582.3	28758.7	29063.7	28453.66	28277.3	28148.7	27843.7	28460
GOLDGUINEA 31OCT2017	BULLISH	23049	23049	23049	23049	23049	23049	23049	23049
GOLDGUINEA 29SEP2017	BEARISH	22847.7	22942.3	23110.3	22774.33	22679.7	22606.3	22438.3	22745
GOLDGUINEA 31AUG2017	BEARISH	22742.7	22849.3	23022.3	22676.33	22569.7	22503.3	22330.3	22627
GOLDM 05OCT2017	BULLISH	28602	28774	29077	28471	28299	28168	27865	28478
GOLDM 05SEP2017	BULLISH	28540.3	28720.7	29032.7	28408.66	28228.3	28096.7	27784.7	28420
GOLDPETAL 31OCT2017	BEARISH	2864.66	2866.33	2869.33	2863.33	2861.66	2860.33	2857.33	2863
GOLDPETAL 29SEP2017	BEARISH	2856	2866	2881	2851	2841	2836	2821	2845

Registered Office:#15-8-1/2/3, 2nd floor, Slddiamber Bazar, Hyderabad - 500012, Telangana State. INDIA.

Corporate Office: #3-6-196/197, Pnme Plaza, 2nd floor, flat No. 204 A & B, H1mayath Nagar, Hyderabad - 500029, Telangana State.INDIA.

Ph:+91-40-64645000,Fax: +91-40-23262166,E-mail:support@basanonline.com,Website:www.basanonline.com



BASAN COMMODITY LIMITED

DAILY COMMODITY REPORT 8th Aug 2017

COMMODITIES	TREND	R1	R2	R3	PIVOT POINT	S1	S2	S3	Close
GOLDPETAL 31AUG2017	BEARISH	2837.66	2849.33	2869.33	2829.33	2817.66	2809.33	2789.33	2824
LEAD 29SEP2017	BULLISH	151.28	152.11	153.61	150.61	149.78	149.11	147.61	151.4
LEAD 31AUG2017	BULLISH	150.6	151.45	152.95	149.95	149.1	148.45	146.95	150.8
LEADMINI 29SEP2017	BULLISH	151.23	152.06	153.56	150.56	149.73	149.06	147.56	151.35
LEADMINI 31AUG2017	BULLISH	150.56	151.38	152.83	149.93	149.11	148.48	147.03	150.85
MENTHAOIL 30NOV2017	BEARISH	1213.66	1226.73	1257.63	1195.83	1182.76	1164.93	1134.03	1182
MENTHAOIL 31OCT2017	BEARISH	1205.46	1216.63	1246.53	1186.73	1175.56	1156.83	1126.93	1176.7
MENTHAOIL 29SEP2017	BEARISH	1197.03	1211.96	1248.66	1175.26	1160.33	1138.56	1101.86	1174
MENTHAOIL 31AUG2017	BEARISH	1185.06	1200.43	1237.13	1163.73	1148.36	1127.03	1090.33	1161.4
NATURALGAS 26OCT2017	BULLISH	188.4	189.2	191.1	187.3	186.5	185.4	183.5	189.2
NATURALGAS 26SEP2017	BULLISH	182.53	183.46	185.86	181.06	180.13	178.66	176.26	183.2
NATURALGAS 28AUG2017	BULLISH	179.5	180.9	184	177.8	176.4	174.7	171.6	179.9
NICKEL 30NOV2017	BULLISH	676	676	676	676	676	676	676	676
NICKEL 31OCT2017	BULLISH	672.4	677.4	687.8	667	662	656.6	646.2	670
NICKEL 29SEP2017	BULLISH	669.56	675.43	688.73	662.13	656.26	648.83	635.53	667.6
NICKEL 31AUG2017	BULLISH	665.26	671.53	685.83	657.23	650.96	642.93	628.63	662.7
NICKELM 31OCT2017	BULLISH	670.7	675.8	686.3	665.3	660.2	654.8	644.3	671.3
NICKELM 29SEP2017	BULLISH	669.63	675.36	688.66	662.06	656.33	648.76	635.46	667.8
NICKELM 31AUG2017	BULLISH	665.13	671.26	685.26	657.26	651.13	643.26	629.26	662.8
PEPPER 18OCT2017	BULLISH	48748.3	49151.7	50106.7	48196.66	47793.3	47241.7	46286.7	48740
PEPPER 20SEP2017	BEARISH	49686.7	50118.3	51318.3	48918.33	48486.7	47718.3	46518.3	48815
RBDPMOLEIN 31AUG2017	BEARISH	523	523	523	523	523	523	523	521.2
SILVER 05MAR2018	BULLISH	38581	38581	38581	38581	38581	38581	38581	38581
SILVER 05DEC2017	BEARISH	38522	39196	40301	38091	37417	36986	35881	37783
SILVER 05SEP2017	BEARISH	37982.7	38703.3	39889.3	37517.33	36796.7	36331.3	35145.3	37265
SILVERM 29JUN2018	BULLISH	39764.7	39814.3	39925.3	39703.33	39653.7	39592.3	39481.3	39715
SILVERM 30APR2018	BULLISH	39208	39271	39397	39145	39082	39019	38893	39145
SILVERM 28FEB2018	BEARISH	39202.7	39687.3	40523.3	38851.33	38366.7	38015.3	37179.3	38361
SILVERM 30NOV2017	BEARISH	38537.7	39187.3	40247.3	38127.33	37477.7	37067.3	36007.3	37862
SILVERM 31AUG2017	BEARISH	38001.3	38728.7	39935.7	37521.66	36794.3	36314.7	35107.7	37277
SILVERMIC 28FEB2018	BEARISH	39178.7	39781.3	40735.3	38827.33	38224.7	37873.3	36919.3	38509
SILVERMIC 30NOV2017	BEARISH	38548.7	39202.3	40266.3	38138.33	37484.7	37074.3	36010.3	37860
SILVERMIC 31AUG2017	BEARISH	37984.7	38693.3	39849.3	37537.33	36828.7	36381.3	35225.3	37281
ZINC 31OCT2017	BULLISH	180.68	181.41	182.81	180.01	179.28	178.61	177.21	183.9
ZINC 29SEP2017	BULLISH	180.61	181.58	183.48	179.68	178.71	177.78	175.88	183.85
ZINC 31AUG2017	BULLISH	180.3	181.4	183.65	179.15	178.05	176.9	174.65	183.3
ZINCMINI 31OCT2017	BULLISH	180.6	181.05	182.1	180	179.55	178.95	177.9	184

Registered Office:#15-8-1/2/3, 2nd floor, Slddiamber Bazar, Hyderabad - 500012, Telangana State. INDIA.

Corporate Office: #3-6-196/197, Pnme Plaza, 2nd floor, flat No. 204 A & B, H1mayath Nagar, Hyderabad - 500029, Telangana State.INDIA.

Ph:+91-40-64645000,Fax: +91-40-23262166,E-mail:support@basanonline.com,Website:www.basanonline.com



BASAN COMMODITY LIMITED

DAILY COMMODITY REPORT 8th Aug 2017

COMMODITIES	TREND	R1	R2	R3	PIVOT POINT	S1	S2	S3	Close
ZINCMINI 29SEP2017	BULLISH	180.63	181.66	183.71	179.61	178.58	177.56	175.51	183.7
ZINCMINI 31AUG2017	BULLISH	180.3	181.4	183.65	179.15	178.05	176.9	174.65	183.3

Registered Office:#15-8-1/2/3, 2nd floor, Slddiamber Bazar, Hyderabad - 500012, Telangana State. INDIA.

Corporate Office: #3-6-196/197, Pnme Plaza, 2nd floor, flat No. 204 A & B, H1mayath Nagar, Hyderabad - 500029, Telangana State.INDIA.

Ph:+91-40-64645000,Fax: +91-40-23262166,E-mail:support@basanonline.com,Website:www.basanonline.com