



BASAN COMMODITY LIMITED

DAILY COMMODITY REPORT 4th Aug 2017

GOLD WEAK FOR THE DAY

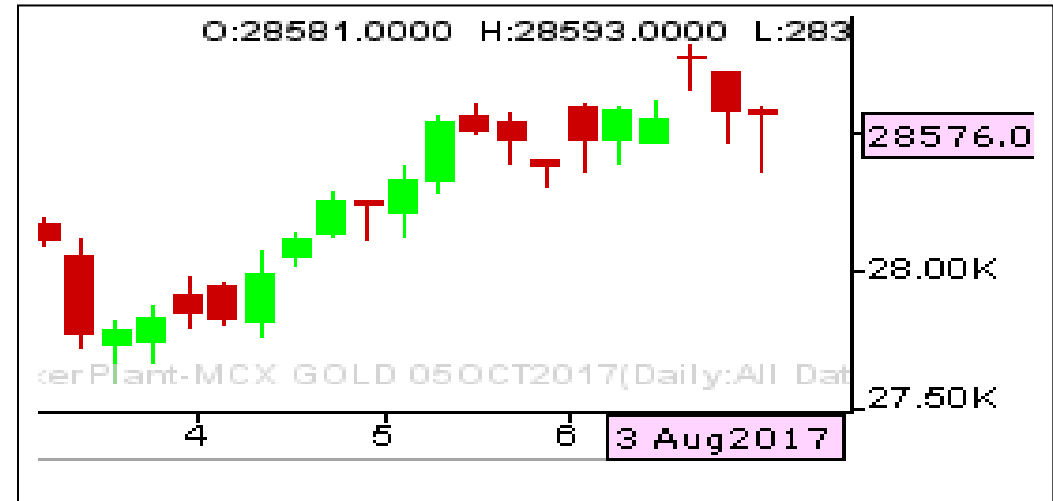
STOP : 28830

TARGET : 28020

What Chart Says :

Oct Gold has regained its strength from day's low of 28365 levels and finally finished its day at 28576 levels. At the same time strong resistance zone is at 28820-28830. Prices are likely to continue its weakness towards 28300 followed by 28000 levels in near term till markets trades below 28820. Alternatively, any close above 28820 only can change our bearish bias.

Hold Sells initiated at 28700 levels and Add more sells on rallies with stop above 28830 for the price objective of 28490 followed by 28020 levels.



SILVER BEARISH

STOP : 38930

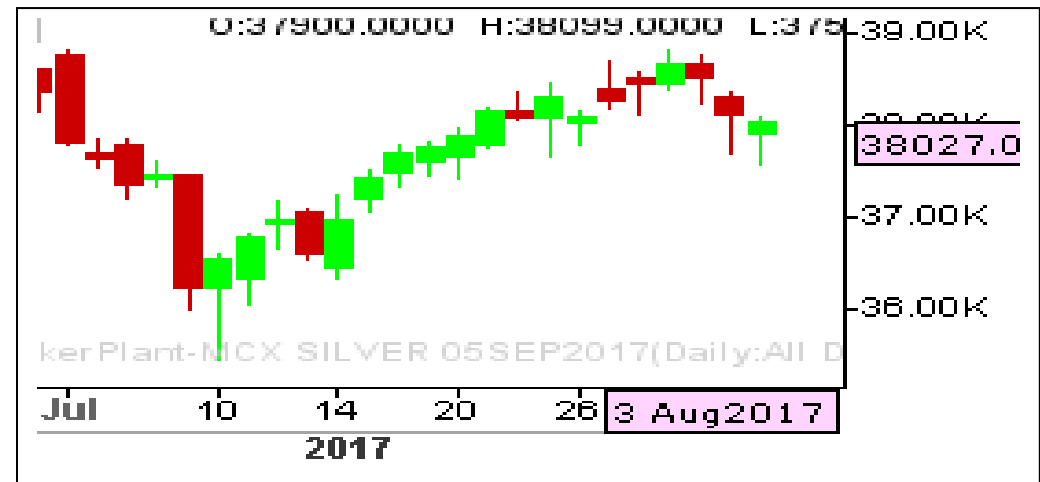
TARGET : 37200

What Chart Says :

Sep Silver prices has turned weak and is expected to trade sideways to lower towards 37600 followed by 37200 levels in near future. Any intraday gains could cap at 38400 levels.

Any strong break and close above 38920 only can change our bearish bias.

Hold existing Sells initiated at 38300 and ADD more sells on rallies with stop above 38930 for the targets of 37200 levels.



Registered Office:#15-8-1/2/3, 2nd floor, Sliddiamber Bazar, Hyderabad - 500012, Telangana State. INDIA.

Corporate Office: #3-6-196/197, Pnme Plaza, 2nd floor, flat No. 204 A & B, H1mayath Nagar, Hyderabad - 500029, Telangana State.INDIA.

Ph:+91-40-64645000,Fax: +91-40-23262166,E-mail:support@basanonline.com,Website:www.basanonline.com

CRUDE OIL WEAK

STOP : 3240

TARGET : 3020

What Chart Says :

Aug Crude Oil trend remains weak and is likely to extend its declines towards 3105 followed by 3020 levels in the coming sessions.

Any corrective gains could be limited to 3180-3190 levels. To attract any buying interest price needs to close over 3190 levels on daily close basis.

Hold Sells initiated at 3170 levels with stop above 3240 for the targets of 3020 levels



ZINC SIDE WAYS TO LOWER

STOP : 182

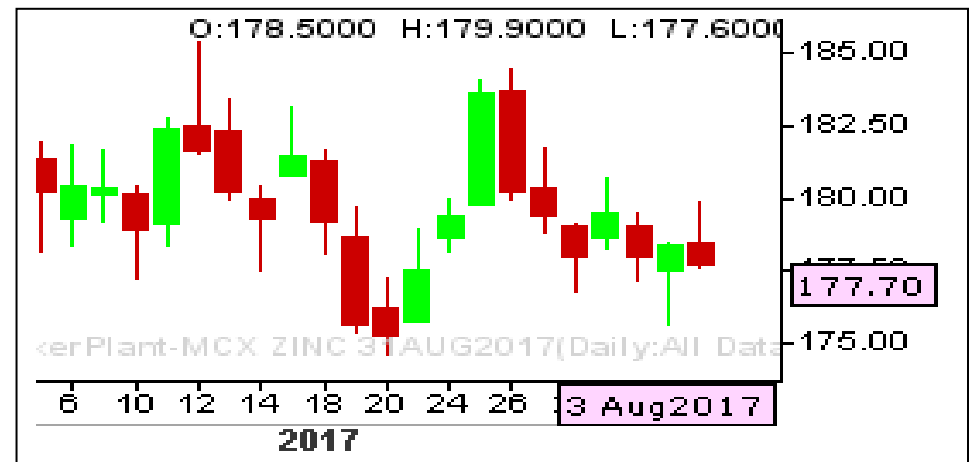
TARGET : 175

What Chart Says :

Aug Zinc has witnessed selling interest by posting a high of 179.90 levels and finally settled at 177.70 levels.

We are expecting prices are likely to trade sideways to lower for the day towards 175 followed by 172 levels.

Hold Sells initiated at 179.50-180 levels with stop above 182 for the price objective of 175 levels followed by 172 levels.





BASAN COMMODITY LIMITED

DAILY COMMODITY REPORT 4th Aug 2017

COMMODITIES	TREND	R1	R2	R3	PIVOT POINT	S1	S2	S3	Close
ALUMINI 31OCT2017	BULLISH	123.4	123.4	123.4	123.4	123.4	123.4	123.4	123.4
ALUMINI 29SEP2017	BEARISH	122.81	123.28	124.08	122.48	122.01	121.68	120.88	122.35
ALUMINI 31AUG2017	BEARISH	122.13	122.71	123.71	121.71	121.13	120.71	119.71	121.55
ALUMINIUM 29SEP2017	BEARISH	122.8	123.3	124.15	122.45	121.95	121.6	120.75	122.3
ALUMINIUM 31AUG2017	BEARISH	122.11	122.68	123.63	121.73	121.16	120.78	119.83	121.55
CARDAMOM 15NOV2017	BEARISH	1079.13	1086.46	1099.86	1073.06	1065.73	1059.66	1046.26	1071.8
CARDAMOM 13OCT2017	BEARISH	1091.86	1105.83	1130.73	1080.93	1066.96	1056.03	1031.13	1077.9
CARDAMOM 15SEP2017	BULLISH	1150.96	1167.63	1210.93	1124.33	1107.66	1081.03	1037.73	1134.3
CARDAMOM 14AUG2017	BULLISH	1186.1	1196.1	1217.4	1174.8	1164.8	1153.5	1132.2	1176.1
COPPER 28FEB2018	BULLISH	414.7	414.7	414.7	414.7	414.7	414.7	414.7	414.7
COPPER 30NOV2017	BULLISH	413.86	415.83	420.18	411.48	409.51	407.13	402.78	411.9
COPPER 31AUG2017	BULLISH	407.65	409.7	414.35	405.05	403	400.4	395.75	405.6
COPPERM 28FEB2018	BULLISH	419.06	421.08	425.13	417.03	415.01	412.98	408.93	417.05
COPPERM 30NOV2017	BULLISH	414.01	416.08	420.63	411.53	409.46	406.98	402.43	411.95
COPPERM 31AUG2017	BULLISH	407.58	409.61	414.16	405.06	403.03	400.51	395.96	405.55
COTTON 29DEC2017	BEARISH	18133.3	18206.7	18346.7	18066.66	17993.3	17926.7	17786.7	18060
COTTON 30NOV2017	BEARISH	18123.3	18196.7	18316.7	18076.66	18003.3	17956.7	17836.7	18050
COTTON 31OCT2017	BEARISH	18600	18710	18890	18530	18420	18350	18170	18490
CPO 31OCT2017	BEARISH	483.06	488.03	495.53	480.53	475.56	473.03	465.53	478.1
CPO 29SEP2017	BEARISH	483.46	488.83	497.03	480.63	475.26	472.43	464.23	478.1
CPO 31AUG2017	BEARISH	484.2	490.5	500.3	480.7	474.4	470.9	461.1	477.9
CRUDEOIL 18OCT2017	BULLISH	3226.66	3244.33	3285.33	3203.33	3185.66	3162.33	3121.33	3209
CRUDEOIL 19SEP2017	BEARISH	3195.66	3227.33	3280.33	3174.33	3142.66	3121.33	3068.33	3164
CRUDEOIL 21AUG2017	BEARISH	3177.33	3211.66	3268.66	3154.66	3120.33	3097.66	3040.66	3143
CRUDEOILM 18DEC2017	BULLISH	3261	3263	3268	3258	3256	3253	3248	3259
CRUDEOILM 17NOV2017	BEARISH	3278.33	3330.66	3427.66	3233.66	3181.33	3136.66	3039.66	3226
CRUDEOILM 18OCT2017	BEARISH	3221.66	3252.33	3306.33	3198.33	3167.66	3144.33	3090.33	3191
CRUDEOILM 19SEP2017	BEARISH	3195.33	3226.66	3279.66	3173.66	3142.33	3120.66	3067.66	3164
CRUDEOILM 21AUG2017	BEARISH	3175.33	3207.66	3261.66	3153.66	3121.33	3099.66	3045.66	3143
GOLD 05FEB2018	BEARISH	28493	28535	28612	28458	28416	28381	28304	28451
GOLD 05DEC2017	BULLISH	28573.3	28648.7	28835.7	28461.66	28386.3	28274.7	28087.7	28498
GOLD 05OCT2017	BULLISH	28657.7	28739.3	28967.3	28511.33	28429.7	28283.3	28055.3	28576
GOLD 04AUG2017	BULLISH	28557.3	28627.7	28826.7	28428.66	28358.3	28229.7	28030.7	28487
GOLDGUINEA 29SEP2017	BULLISH	22889.3	22983.7	23212.7	22754.66	22660.3	22525.7	22296.7	22795
GOLDGUINEA 31AUG2017	BULLISH	22760.3	22807.7	22937.7	22677.66	22630.3	22547.7	22417.7	22713
GOLDM 05OCT2017	BULLISH	28662.7	28732.3	28933.3	28531.33	28461.7	28330.3	28129.3	28593
GOLDM 05SEP2017	BULLISH	28592	28666	28876	28456	28382	28246	28036	28518

Registered Office:#15-8-1/2/3, 2nd floor, Slddiamber Bazar, Hyderabad - 500012, Telangana State. INDIA.

Corporate Office: #3-6-196/197, Pnme Plaza, 2nd floor, flat No. 204 A & B, H1mayath Nagar, Hyderabad - 500029, Telangana State.INDIA.

Ph:+91-40-64645000,Fax: +91-40-23262166,E-mail:support@basanonline.com,Website:www.basanonline.com



BASAN COMMODITY LIMITED

DAILY COMMODITY REPORT 4th Aug 2017

COMMODITIES	TREND	R1	R2	R3	PIVOT POINT	S1	S2	S3	Close
GOLDM 04AUG2017	BULLISH	28531.7	28616.3	28817.3	28415.33	28330.7	28214.3	28013.3	28447
GOLDPETAL 31OCT2017	BULLISH	2876.33	2882.66	2895.66	2869.66	2863.33	2856.66	2843.66	2870
GOLDPETAL 29SEP2017	BULLISH	2863.33	2870.66	2886.66	2854.66	2847.33	2838.66	2822.66	2856
GOLDPETAL 31AUG2017	BULLISH	2843	2850	2867	2833	2826	2816	2799	2836
LEAD 29SEP2017	BULLISH	151.48	152.26	153.96	150.56	149.78	148.86	147.16	150.7
LEAD 31AUG2017	BULLISH	150.96	151.83	153.73	149.93	149.06	148.03	146.13	150.1
LEADMINI 29SEP2017	BULLISH	151.63	152.46	154.31	150.61	149.78	148.76	146.91	150.8
LEADMINI 31AUG2017	BULLISH	151.06	152.03	154.03	150.03	149.06	148.03	146.03	150.1
MENTHAOIL 30NOV2017	BULLISH	1186.8	1199.9	1227.9	1171.9	1158.8	1143.9	1115.9	1173.7
MENTHAOIL 31OCT2017	BULLISH	1174.26	1191.03	1224.83	1157.23	1140.46	1123.43	1089.63	1157.5
MENTHAOIL 29SEP2017	BULLISH	1171.13	1186.66	1223.86	1149.46	1133.93	1112.26	1075.06	1155.6
MENTHAOIL 31AUG2017	BULLISH	1162.03	1179.26	1219.76	1138.76	1121.53	1098.26	1057.76	1144.8
NATURALGAS 26OCT2017	BULLISH	190.5	191.5	193.5	189.5	188.5	187.5	185.5	189.5
NATURALGAS 26SEP2017	BEARISH	184.76	186.53	189.63	183.43	181.66	180.33	177.23	183
NATURALGAS 28AUG2017	BEARISH	181.3	183.2	186.5	179.9	178	176.6	173.3	179.4
NICKEL 31OCT2017	BULLISH	669.63	669.66	669.76	669.56	669.53	669.46	669.36	669.6
NICKEL 29SEP2017	BULLISH	669.46	673.33	683.23	663.43	659.56	653.53	643.63	665.6
NICKEL 31AUG2017	BULLISH	664.96	669.03	679.33	658.73	654.66	648.43	638.13	660.9
NICKELM 31OCT2017	BULLISH	670.96	674.13	681.43	666.83	663.66	659.53	652.23	667.8
NICKELM 29SEP2017	BULLISH	669.26	673.03	682.83	663.23	659.46	653.43	643.63	665.5
NICKELM 31AUG2017	BULLISH	664.9	668.9	679	658.8	654.8	648.7	638.6	660.9
PEPPER 18OCT2017	BULLISH	47695	47695	47695	47695	47695	47695	47695	47695
PEPPER 20SEP2017	BULLISH	48340	48495	48820	48170	48015	47845	47520	48185
RBDPMOLEIN 31AUG2017	BEARISH	524.73	527.46	532.56	522.36	519.63	517.26	512.16	522
SILVER 05DEC2017	BULLISH	38736.7	38923.3	39428.3	38418.33	38231.7	37913.3	37408.3	38550
SILVER 05SEP2017	BULLISH	38230.3	38433.7	38971.7	37895.66	37692.3	37357.7	36819.7	38027
SILVERM 29JUN2018	BULLISH	40500	40500	40500	40500	40500	40500	40500	40500
SILVERM 28FEB2018	BULLISH	39000	39000	39000	39000	39000	39000	39000	39000
SILVERM 30NOV2017	BULLISH	38769.3	38959.7	39459.7	38459.66	38269.3	37959.7	37459.7	38579
SILVERM 31AUG2017	BULLISH	38260.7	38475.3	39035.3	37915.33	37700.7	37355.3	36795.3	38046
SILVERMIC 28FEB2018	BULLISH	39347	39500	39904	39096	38943	38692	38288	39194
SILVERMIC 30NOV2017	BULLISH	38765	38943	39415	38471	38293	37999	37527	38587
SILVERMIC 31AUG2017	BULLISH	38251.7	38457.3	38996.3	37918.33	37712.7	37379.3	36840.3	38046
ZINC 31OCT2017	BEARISH	180.51	181.83	183.98	179.68	178.36	177.53	175.38	179.2
ZINC 29SEP2017	BEARISH	179.65	181.05	183.2	178.9	177.5	176.75	174.6	178.25
ZINC 31AUG2017	BEARISH	179.2	180.7	183	178.4	176.9	176.1	173.8	177.7
ZINCMINI 29SEP2017	BEARISH	179.7	181.2	183.5	178.9	177.4	176.6	174.3	178.2

Registered Office:#15-8-1/2/3, 2nd floor, Slddiamber Bazar, Hyderabad - 500012, Telangana State. INDIA.

Corporate Office: #3-6-196/197, Pnme Plaza, 2nd floor, flat No. 204 A & B, H1mayath Nagar, Hyderabad - 500029, Telangana State.INDIA.

Ph:+91-40-64645000,Fax: +91-40-23262166,E-mail:support@basanonline.com,Website:www.basanonline.com



BASAN COMMODITY LIMITED

DAILY COMMODITY REPORT 4th Aug 2017

COMMODITIES	TREND	R1	R2	R3	PIVOT POINT	S1	S2	S3	Close
ZINCMINI 31AUG2017	BEARISH	179.3	180.85	183.25	178.45	176.9	176.05	173.65	177.75

Registered Office:#15·8-1/2/3, 2nd floor, Slldiamber Bazar, Hyderabad - 500012, Telangana State. INDIA.
Corporate Office: #3-6-196/197, Pnme Plaza, 2nd floor, flat No. 204 A & B, H1mayath Nagar, Hyderabad - 500029, Telangana State.INDIA.
Ph:+91-40-64645000,Fax: +91-40-23262166,E-mail:support@basanonline.com,Website:www.basanonline.com