



BASAN COMMODITY LIMITED

DAILY COMMODITY REPORT 2nd Aug 2017

GOLD WEAK FOR THE DAY

STOP : 28830

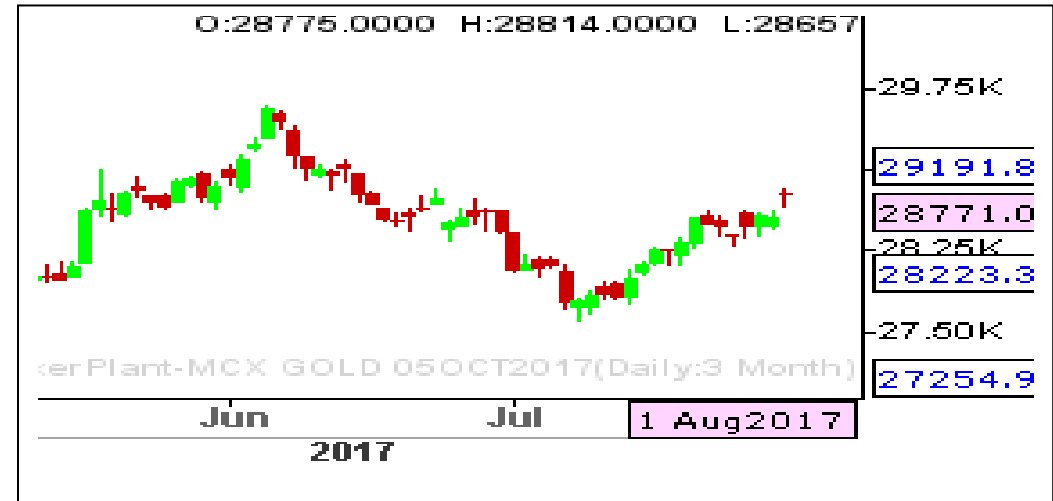
TARGET : 28340

What Chart Says :

Oct Gold has found strong resistance zone at 28820-28830 zone. Prices must strongly hold over 28830 levels to attract any additional buying interest. Failure of which can put prices under pressure.

Strong support levels are eyed at 28620 and 28490 levels. For the day prices could witness some selling interest and decline towards 28490 levels in near term.

Sell on rallies with stop above 28830 for the price objective of 28490 followed by 28340 levels.



SILVER BEARISH

STOP : 38930

TARGET : 37920

What Chart Says :

Sep Silver prices has been struggling to break and sustain above 38800 levels for the past couple of days. Till price manages to trade below 38800 our bias remains weak with the price outlook of 37920 followed by 37600 levels.

Any strong break and close above 38920 can change our bearish bias.

Sell on rallies with stop above 38930 for the targets of 37920 levels.



Registered Office:#15-8-1/2/3, 2nd floor, Sliddiamber Bazar, Hyderabad - 500012, Telangana State. INDIA.

Corporate Office: #3-6-196/197, Pnme Plaza, 2nd floor, flat No. 204 A & B, H1mayath Nagar, Hyderabad - 500029, Telangana State.INDIA.

Ph:+91-40-64645000,Fax: +91-40-23262166,E-mail:support@basanonline.com,Website:www.basanonline.com



BASAN COMMODITY LIMITED

DAILY COMMODITY REPORT 2nd Aug 2017

CRUDE OIL WEAK

STOP : 3240

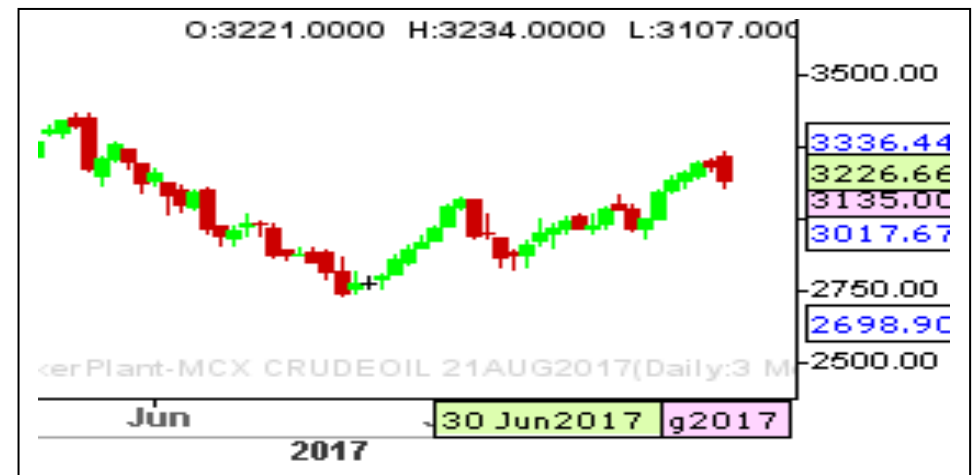
TARGET : 3000

What Chart Says :

Aug CRUDE OIL has witnessed profit booking on Tuesday by posting a day's high of 3234 levels and finally settled on weak note at 3135 levels.

We are expecting prices could dip further towards 3000 levels in near term. Any strong close below 3000 can put some more pressure on prices.

Sell on rallies with stop above 3240 for the targets of 3000 levels



ZINC SIDEWAYS TO LOWER

STOP : 182

TARGET : 175

What Chart Says :

Aug Zinc has witnessed selling interest on Tuesday by posting a high of 179.50 levels. Overall trend remains weak till price manages to trade below 180 levels.

We are expecting prices are likely to continue its declines towards 175 levels till price manages to trade below 180 levels.

Sell on rallies to 180 with stop above 182 for the price objective of 175 levels.



Registered Office:#15-8-1/2/3, 2nd floor, Slddiamber Bazar, Hyderabad - 500012, Telangana State. INDIA.

Corporate Office: #3-6-196/197, Pnme Plaza, 2nd floor, flat No. 204 A & B, H1mayath Nagar, Hyderabad - 500029, Telangana State.INDIA.

Ph:+91-40-64645000,Fax: +91-40-23262166,E-mail:support@basanonline.com,Website:www.basanonline.com



BASAN COMMODITY LIMITED

DAILY COMMODITY REPORT 2nd Aug 2017

| COMMODITIES | TREND | R1 | R2 | R3 | PIVOT POINT | S1 | S2 | S3 | Close |
|----------------------|---------|---------|---------|---------|-------------|---------|---------|---------|--------|
| ALUMINI 29SEP2017 | BEARISH | 123.66 | 124.03 | 124.73 | 123.33 | 122.96 | 122.63 | 121.93 | 123.3 |
| ALUMINI 31AUG2017 | BEARISH | 123.21 | 123.68 | 124.58 | 122.78 | 122.31 | 121.88 | 120.98 | 122.75 |
| ALUMINIUM 29SEP2017 | BULLISH | 123.7 | 124.1 | 124.9 | 123.3 | 122.9 | 122.5 | 121.7 | 123.3 |
| ALUMINIUM 31AUG2017 | BEARISH | 123.2 | 123.7 | 124.65 | 122.75 | 122.25 | 121.8 | 120.85 | 122.7 |
| CARDAMOM 15NOV2017 | BULLISH | 1091.8 | 1093.1 | 1095.7 | 1090.5 | 1089.2 | 1087.9 | 1085.3 | 1090.5 |
| CARDAMOM 13OCT2017 | BULLISH | 1090.8 | 1098.6 | 1120.3 | 1076.9 | 1069.1 | 1055.2 | 1033.5 | 1083 |
| CARDAMOM 15SEP2017 | BULLISH | 1114.53 | 1121.16 | 1141.06 | 1101.26 | 1094.63 | 1081.36 | 1061.46 | 1107.9 |
| CARDAMOM 14AUG2017 | BULLISH | 1202.86 | 1216.33 | 1256.23 | 1176.43 | 1162.96 | 1136.53 | 1096.63 | 1189.4 |
| COPPER 28FEB2018 | BULLISH | 424.36 | 426.23 | 429.98 | 422.48 | 420.61 | 418.73 | 414.98 | 422.5 |
| COPPER 30NOV2017 | BEARISH | 419.26 | 421.73 | 426.18 | 417.28 | 414.81 | 412.83 | 408.38 | 416.8 |
| COPPER 31AUG2017 | BEARISH | 413.63 | 416.61 | 422.36 | 410.86 | 407.88 | 405.11 | 399.36 | 410.65 |
| COPPERM 28FEB2018 | BEARISH | 424 | 425.95 | 429.05 | 422.85 | 420.9 | 419.75 | 416.65 | 422.05 |
| COPPERM 30NOV2017 | BEARISH | 419.08 | 421.46 | 425.71 | 417.21 | 414.83 | 412.96 | 408.71 | 416.7 |
| COPPERM 31AUG2017 | BEARISH | 413.56 | 416.48 | 422.18 | 410.78 | 407.86 | 405.08 | 399.38 | 410.65 |
| COTTON 29DEC2017 | BEARISH | 17943.3 | 17986.7 | 18066.7 | 17906.66 | 17863.3 | 17826.7 | 17746.7 | 17900 |
| COTTON 30NOV2017 | BULLISH | 18043.3 | 18096.7 | 18246.7 | 17946.66 | 17893.3 | 17796.7 | 17646.7 | 17990 |
| COTTON 31OCT2017 | BULLISH | 18506.7 | 18573.3 | 18763.3 | 18383.33 | 18316.7 | 18193.3 | 18003.3 | 18440 |
| CPO 31OCT2017 | BEARISH | 494.86 | 497.53 | 502.73 | 492.33 | 489.66 | 487.13 | 481.93 | 492.2 |
| CPO 29SEP2017 | BULLISH | 494.5 | 497.1 | 502.7 | 491.5 | 488.9 | 485.9 | 480.3 | 491.9 |
| CPO 31AUG2017 | BULLISH | 495 | 497.4 | 503.1 | 491.7 | 489.3 | 486 | 480.3 | 492.6 |
| CRUDEOIL 19JAN2018 | BULLISH | 3307.66 | 3313.33 | 3325.33 | 3301.33 | 3295.66 | 3289.33 | 3277.33 | 3302 |
| CRUDEOIL 18DEC2017 | BULLISH | 3286.33 | 3291.66 | 3302.66 | 3280.66 | 3275.33 | 3269.66 | 3258.66 | 3281 |
| CRUDEOIL 17NOV2017 | BULLISH | 3270 | 3277 | 3291 | 3263 | 3256 | 3249 | 3235 | 3263 |
| CRUDEOIL 18OCT2017 | BEARISH | 3243.66 | 3264.33 | 3299.33 | 3229.33 | 3208.66 | 3194.33 | 3159.33 | 3223 |
| CRUDEOIL 19SEP2017 | BEARISH | 3228 | 3252 | 3297 | 3207 | 3183 | 3162 | 3117 | 3204 |
| CRUDEOIL 21AUG2017 | BEARISH | 3209.66 | 3236.33 | 3285.33 | 3187.33 | 3160.66 | 3138.33 | 3089.33 | 3183 |
| CRUDEOILM 17NOV2017 | BULLISH | 3261 | 3261 | 3261 | 3261 | 3261 | 3261 | 3261 | 3261 |
| CRUDEOILM 18OCT2017 | BULLISH | 3252.66 | 3272.33 | 3312.33 | 3232.33 | 3212.66 | 3192.33 | 3152.33 | 3233 |
| CRUDEOILM 19SEP2017 | BEARISH | 3227.66 | 3253.33 | 3300.33 | 3206.33 | 3180.66 | 3159.33 | 3112.33 | 3202 |
| CRUDEOILM 21AUG2017 | BEARISH | 3209 | 3236 | 3285 | 3187 | 3160 | 3138 | 3089 | 3182 |
| GOLD 05FEB2018 | BEARISH | 28744.7 | 29137.3 | 29757.3 | 28517.33 | 28124.7 | 27897.3 | 27277.3 | 28352 |
| GOLD 05DEC2017 | BEARISH | 28761 | 29130 | 29708 | 28552 | 28183 | 27974 | 27396 | 28392 |
| GOLD 05OCT2017 | BEARISH | 28823.7 | 28891.3 | 29001.3 | 28781.33 | 28713.7 | 28671.3 | 28561.3 | 28756 |
| GOLD 04AUG2017 | BULLISH | 28629 | 28701 | 28854 | 28548 | 28476 | 28395 | 28242 | 28557 |
| GOLDGUINEA 29SEP2017 | BEARISH | 22980.3 | 23049.7 | 23172.7 | 22926.66 | 22857.3 | 22803.7 | 22680.7 | 22911 |
| GOLDGUINEA 31AUG2017 | BULLISH | 22890 | 22932 | 23038 | 22826 | 22784 | 22720 | 22614 | 22848 |
| GOLDM 05OCT2017 | BEARISH | 28851.3 | 28930.7 | 29060.7 | 28800.66 | 28721.3 | 28670.7 | 28540.7 | 28772 |

Registered Office:#15-8-1/2/3, 2nd floor, Slddiamber Bazar, Hyderabad - 500012, Telangana State. INDIA.

Corporate Office: #3-6-196/197, Pnme Plaza, 2nd floor, flat No. 204 A & B, H1mayath Nagar, Hyderabad - 500029, Telangana State.INDIA.

Ph:+91-40-64645000,Fax: +91-40-23262166,E-mail:support@basanonline.com,Website:www.basanonline.com



BASAN COMMODITY LIMITED

DAILY COMMODITY REPORT 2nd Aug 2017

| COMMODITIES | TREND | R1 | R2 | R3 | PIVOT POINT | S1 | S2 | S3 | Close |
|----------------------|---------|---------|---------|---------|-------------|---------|---------|---------|--------|
| GOLDGUINEA 29SEP2017 | BULLISH | 22980.3 | 23049.7 | 23172.7 | 22926.66 | 22857.3 | 22803.7 | 22680.7 | 22969 |
| GOLDGUINEA 31AUG2017 | BULLISH | 22890 | 22932 | 23038 | 22826 | 22784 | 22720 | 22614 | 22876 |
| GOLDM 05OCT2017 | BEARISH | 28851.3 | 28930.7 | 29060.7 | 28800.66 | 28721.3 | 28670.7 | 28540.7 | 28798 |
| GOLDM 05SEP2017 | BEARISH | 28804.7 | 28907.3 | 29087.3 | 28727.33 | 28624.7 | 28547.3 | 28367.3 | 28693 |
| GOLDM 04AUG2017 | BEARISH | 28640.7 | 28693.3 | 28811.3 | 28575.33 | 28522.7 | 28457.3 | 28339.3 | 28514 |
| GOLDPETAL 31OCT2017 | BULLISH | 2883.33 | 2884.66 | 2887.66 | 2881.66 | 2880.33 | 2878.66 | 2875.66 | 2884 |
| GOLDPETAL 29SEP2017 | BULLISH | 2876.66 | 2880.33 | 2888.33 | 2872.33 | 2868.66 | 2864.33 | 2856.33 | 2876 |
| GOLDPETAL 31AUG2017 | BULLISH | 2862.33 | 2866.66 | 2876.66 | 2856.66 | 2852.33 | 2846.66 | 2836.66 | 2858 |
| LEAD 31OCT2017 | BULLISH | 150.65 | 150.65 | 150.65 | 150.65 | 150.65 | 150.65 | 150.65 | 150.65 |
| LEAD 29SEP2017 | BULLISH | 150.26 | 151.03 | 152.28 | 149.78 | 149.01 | 148.53 | 147.28 | 149.95 |
| LEAD 31AUG2017 | BEARISH | 149.91 | 150.83 | 152.43 | 149.23 | 148.31 | 147.63 | 146.03 | 149.2 |
| LEADMINI 29SEP2017 | BULLISH | 150.4 | 151.25 | 152.7 | 149.8 | 148.95 | 148.35 | 146.9 | 149.9 |
| LEADMINI 31AUG2017 | BEARISH | 149.86 | 150.73 | 152.23 | 149.23 | 148.36 | 147.73 | 146.23 | 149.2 |
| MENTHAOIL 31OCT2017 | BULLISH | 1124.43 | 1124.46 | 1124.56 | 1124.36 | 1124.33 | 1124.26 | 1124.16 | 1163.4 |
| MENTHAOIL 29SEP2017 | BULLISH | 1112.06 | 1115.63 | 1126.33 | 1104.93 | 1101.36 | 1094.23 | 1083.53 | 1152.7 |
| MENTHAOIL 31AUG2017 | BULLISH | 1104.6 | 1113.5 | 1140.2 | 1086.8 | 1077.9 | 1060.1 | 1033.4 | 1139.5 |
| NATURALGAS 26OCT2017 | BEARISH | 193.3 | 196.9 | 202.5 | 191.3 | 187.7 | 185.7 | 180.1 | 190.2 |
| NATURALGAS 26SEP2017 | BEARISH | 188.7 | 193.9 | 202 | 185.8 | 180.6 | 177.7 | 169.6 | 184.5 |
| NATURALGAS 28AUG2017 | BEARISH | 186.3 | 192.6 | 202.4 | 182.8 | 176.5 | 173 | 163.2 | 181.2 |
| NICKEL 31OCT2017 | BEARISH | 672.33 | 673.46 | 675.76 | 671.16 | 670.03 | 668.86 | 666.56 | 663.1 |
| NICKEL 29SEP2017 | BEARISH | 666.66 | 671.13 | 678.93 | 663.33 | 658.86 | 655.53 | 647.73 | 662.1 |
| NICKEL 31AUG2017 | BEARISH | 662.5 | 667.7 | 676.6 | 658.8 | 653.6 | 649.9 | 641 | 657.9 |
| NICKELM 29SEP2017 | BEARISH | 667.43 | 672.66 | 681.56 | 663.76 | 658.53 | 654.86 | 645.96 | 662.3 |
| NICKELM 31AUG2017 | BEARISH | 662.66 | 667.93 | 676.83 | 659.03 | 653.76 | 650.13 | 641.23 | 657.9 |
| PEPPER 18OCT2017 | BEARISH | 47316.7 | 47533.3 | 47883.3 | 47183.33 | 46966.7 | 46833.3 | 46483.3 | 47025 |
| PEPPER 20SEP2017 | BEARISH | 47806.7 | 48078.3 | 48678.3 | 47478.33 | 47206.7 | 46878.3 | 46278.3 | 47385 |
| RBDPMOLEIN 31AUG2017 | BULLISH | 542.2 | 542.2 | 542.2 | 542.2 | 542.2 | 542.2 | 542.2 | 542.2 |
| SILVER 05MAR2018 | BULLISH | 39781 | 39799 | 39835 | 39763 | 39745 | 39727 | 39691 | 39763 |
| SILVER 05DEC2017 | BEARISH | 39305.3 | 39461.7 | 39769.7 | 39153.66 | 38997.3 | 38845.7 | 38537.7 | 39022 |
| SILVER 05SEP2017 | BEARISH | 38846 | 39047 | 39475 | 38619 | 38418 | 38191 | 37763 | 38512 |
| SILVERM 30APR2018 | BULLISH | 40561 | 40586 | 40636 | 40536 | 40511 | 40486 | 40436 | 40536 |
| SILVERM 28FEB2018 | BEARISH | 39921.3 | 40021.7 | 40200.7 | 39842.66 | 39742.3 | 39663.7 | 39484.7 | 39698 |
| SILVERM 30NOV2017 | BEARISH | 39392.3 | 39611.7 | 40095.7 | 39127.66 | 38908.3 | 38643.7 | 38159.7 | 39056 |
| SILVERM 31AUG2017 | BEARISH | 38886.7 | 39108.3 | 39568.3 | 38648.33 | 38426.7 | 38188.3 | 37728.3 | 38530 |
| SILVERMIC 28FEB2018 | BEARISH | 39902.3 | 40005.7 | 40194.7 | 39816.66 | 39713.3 | 39627.7 | 39438.7 | 39719 |
| SILVERMIC 30NOV2017 | BEARISH | 39326 | 39479 | 39771 | 39187 | 39034 | 38895 | 38603 | 39063 |
| SILVERMIC 31AUG2017 | BEARISH | 38867.3 | 39067.7 | 39497.7 | 38637.66 | 38437.3 | 38207.7 | 37777.7 | 38537 |

Registered Office:#15-8-1/2/3, 2nd floor, Slddiamber Bazar, Hyderabad - 500012, Telangana State. INDIA.

Corporate Office: #3-6-196/197, Pnme Plaza, 2nd floor, flat No. 204 A & B, H1mayath Nagar, Hyderabad - 500029, Telangana State.INDIA.

Ph:+91-40-64645000,Fax: +91-40-23262166,E-mail:support@basanonline.com,Website:www.basanonline.com



BASAN COMMODITY LIMITED

DAILY COMMODITY REPORT 2nd Aug 2017

| COMMODITIES | TREND | R1 | R2 | R3 | PIVOT POINT | S1 | S2 | S3 | Close |
|--------------------|---------|--------|--------|--------|-------------|--------|--------|--------|--------|
| ZINC 29SEP2017 | BEARISH | 181 | 182.15 | 183.95 | 180.35 | 179.2 | 178.55 | 176.75 | 178.5 |
| ZINC 31AUG2017 | BEARISH | 180.75 | 182.1 | 184.35 | 179.85 | 178.5 | 177.6 | 175.35 | 178 |
| ZINCMINI 29SEP2017 | BEARISH | 181.13 | 182.41 | 184.56 | 180.26 | 178.98 | 178.11 | 175.96 | 178.55 |
| ZINCMINI 31AUG2017 | BEARISH | 180.71 | 182.03 | 184.23 | 179.83 | 178.51 | 177.63 | 175.43 | 178 |

Registered Office:#15-8-1/2/3, 2nd floor, Slddiamber Bazar, Hyderabad - 500012, Telangana State. INDIA.

Corporate Office: #3-6-196/197, Pnme Plaza, 2nd floor, flat No. 204 A & B, H1mayath Nagar, Hyderabad - 500029, Telangana State.INDIA.

Ph:+91-40-64645000,Fax: +91-40-23262166,E-mail:support@basanonline.com,Website:www.basanonline.com