



BASAN COMMODITY LIMITED

DAILY COMMODITY REPORT 27th July 2017

GOLD FIRM FOR THE DAY

STOP : 28300

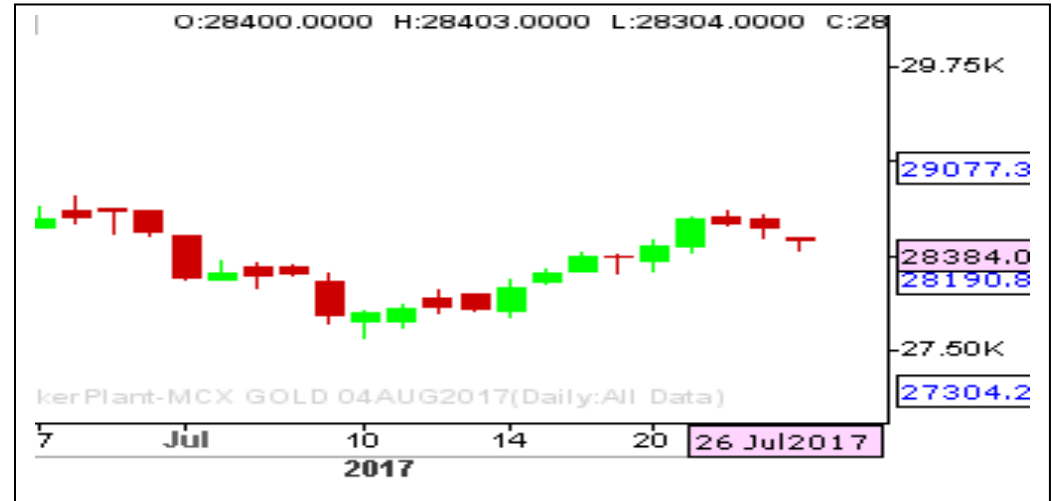
TARGET:28700

What Chart Says :

Aug Gold has found strong base at 28300 levels, till price manages to trade above these levels our bias remains firm targeting 28600 followed by 28700 levels.

Prices needs to clear 28300 to attract any selling interest.

BUY On dips till price manages to trade above 28300 for the price objective of 28700 levels



SILVER BULLISH

STOP : 37700

TARGET : 38980

What Chart Says :

Sep Silver has gained its positive momentum by posting a day's low of 37778 on Wednesday and finally settled at 38091 levels. For the day trend remains positive and is likely to extend its gains towards 38500 levels initial followed by 38980 levels.

Any breakout and close below 37700 can change our bullish bias.

BUY on dips for the price targets of 38980 with stop below 37700.



Registered Office:#15-8-1/2/3, 2nd floor, Sliddiambhar Bazar, Hyderabad - 500012, Telangana State. INDIA.

Corporate Office: #3-6-196/197, Pnme Plaza, 2nd floor, flat No. 204 A & B, H1mayath Nagar, Hyderabad - 500029, Telangana State.INDIA.

Ph:+91-40-64645000,Fax: +91-40-23262166,E-mail:support@basanonline.com,Website:www.basanonline.com



BASAN COMMODITY LIMITED

DAILY COMMODITY REPORT 27th July 2017

CRUDE OIL BULLISH FOR THE DAY

STOP:3085

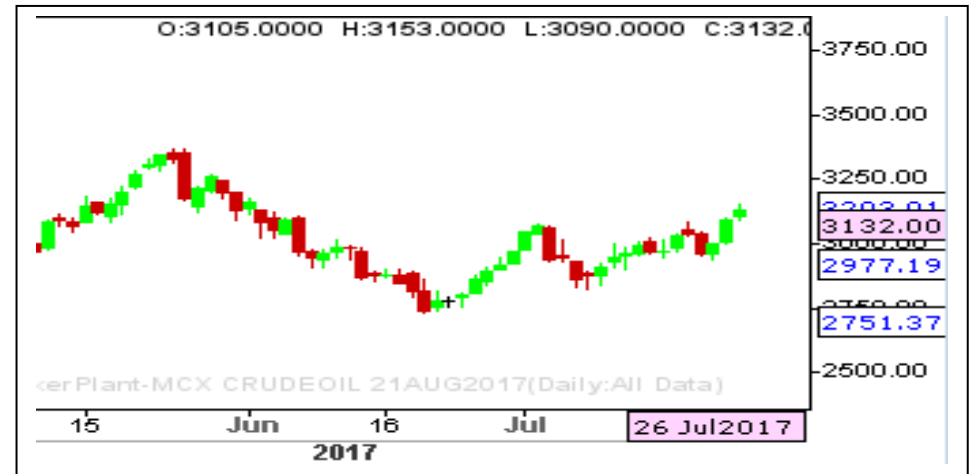
TARGET:3190

What Chart Says :

CRUDE Oil has witnessed strong positive momentum for the third consecutive day and finally settled at 3132 levels, leaving some positive sentiment in near term.

Prices are likely to extend its gains towards 3190 levels in near term by testing 3098 levels down.

Awaiting for fresh entry.



ZINC MIXED

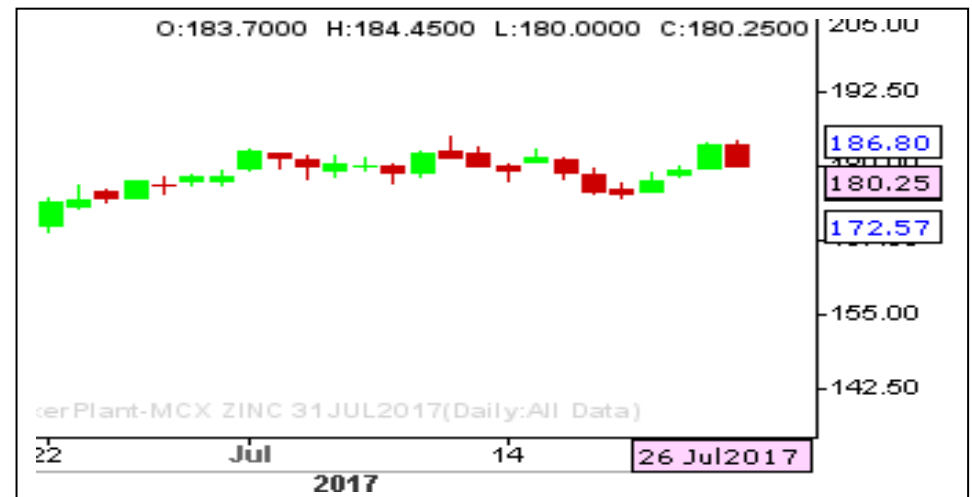
RANGE : 177 - 183

What Chart Says :

July Zinc has erased maximum rally which had witnessed on Tuesday and settled on weak note at 180.25 on Wednesday. We are expecting prices are likely to continue its declines towards 177 levels if prices can able to managed to trade below 180 levels. Failure of which can again take back prices to higher but chances are very less.

Any close below 180 only can change our bias.

Awaiting for fresh entry.



Registered Office:#15-8-1/2/3, 2nd floor, Sllddiamber Bazar, Hyderabad - 500012, Telangana State. INDIA.

Corporate Office: #3-6-196/197, Pnme Plaza, 2nd floor, flat No. 204 A & B, H1mayath Nagar, Hyderabad - 500029, Telangana State.INDIA.

Ph:+91-40-64645000,Fax: +91-40-23262166,E-mail:support@basanonline.com,Website:www.basanonline.com



BASAN COMMODITY LIMITED

DAILY COMMODITY REPORT 27th July 2017

COMMODITIES	TREND	R1	R2	R3	PIVOT POINT	S1	S2	S3	Close
ALUMINI 29SEP2017	BEARISH	126.5	127.45	129.15	125.75	124.8	124.05	122.35	125.55
ALUMINI 31AUG2017	BEARISH	125.66	126.93	128.93	124.93	123.66	122.93	120.93	124.4
ALUMINI 31JUL2017	BEARISH	124.86	126.18	128.28	124.08	122.76	121.98	119.88	123.55
ALUMINIUM 29SEP2017	BEARISH	126.45	127	128.05	125.95	125.4	124.9	123.85	125.9
ALUMINIUM 31AUG2017	BEARISH	125.68	126.96	129.01	124.91	123.63	122.86	120.81	124.4
ALUMINIUM 31JUL2017	BEARISH	124.88	126.21	128.36	124.06	122.73	121.91	119.76	123.55
CARDAMOM 13OCT2017	BEARISH	1032.8	1040.3	1054.2	1026.4	1018.9	1012.5	998.6	1025.3
CARDAMOM 15SEP2017	BULLISH	1075.8	1089.4	1124.4	1054.4	1040.8	1019.4	984.4	1062.2
CARDAMOM 14AUG2017	BULLISH	1162.06	1182.53	1227.53	1137.53	1117.06	1092.53	1047.53	1141.6
COPPER 28FEB2018	BEARISH	425.01	428.43	434.68	422.18	418.76	415.93	409.68	421.6
COPPER 30NOV2017	BEARISH	419.1	423.85	432.15	415.55	410.8	407.25	398.95	414.35
COPPER 31AUG2017	BEARISH	413.08	418.06	426.86	409.26	404.28	400.46	391.66	408.1
COPPERM 28FEB2018	BEARISH	424.15	427.95	434.7	421.2	417.4	414.45	407.7	420.35
COPPERM 30NOV2017	BEARISH	419.03	423.81	432.11	415.51	410.73	407.21	398.91	414.25
COPPERM 31AUG2017	BEARISH	413.08	418.01	426.71	409.31	404.38	400.61	391.91	408.15
COTTON 29DEC2017	BEARISH	18213.3	18466.7	18876.7	18056.66	17803.3	17646.7	17236.7	17960
COTTON 30NOV2017	BEARISH	18166.7	18383.3	18743.3	18023.33	17806.7	17663.3	17303.3	17950
COTTON 31OCT2017	BEARISH	18666.7	18993.3	19573.3	18413.33	18086.7	17833.3	17253.3	18340
COTTON 31JUL2017	BEARISH	20773.3	20906.7	21136.7	20676.66	20543.3	20446.7	20216.7	20640
CPO 31OCT2017	BULLISH	486.2	489.1	497.1	481.1	478.2	473.1	465.1	483.3
CPO 29SEP2017	BULLISH	486.1	489.3	497.3	481.3	478.1	473.3	465.3	482.9
CPO 31AUG2017	BULLISH	488.1	491.6	499.8	483.4	479.9	475.2	467	484.6
CPO 31JUL2017	BULLISH	488.16	490.23	495.03	485.43	483.36	480.63	475.83	486.1
CRUDEOIL 18DEC2017	BULLISH	3227	3233	3246	3220	3214	3207	3194	3221
CRUDEOIL 17NOV2017	BULLISH	3209	3217	3233	3201	3193	3185	3169	3201
CRUDEOIL 18OCT2017	BULLISH	3195	3213	3254	3172	3154	3131	3090	3177
CRUDEOIL 19SEP2017	BULLISH	3179.33	3205.66	3265.66	3145.66	3119.33	3085.66	3025.66	3153
CRUDEOIL 21AUG2017	BULLISH	3160	3188	3251	3125	3097	3062	2999	3132
CRUDEOILM 17NOV2017	BULLISH	3206.33	3217.66	3241.66	3193.66	3182.33	3169.66	3145.66	3195
CRUDEOILM 18OCT2017	BULLISH	3199.33	3221.66	3273.66	3169.66	3147.33	3117.66	3065.66	3177
CRUDEOILM 19SEP2017	BULLISH	3179	3205	3265	3145	3119	3085	3025	3153
CRUDEOILM 21AUG2017	BULLISH	3160	3188	3252	3124	3096	3060	2996	3132
GOLD 05DEC2017	BULLISH	28842	28867	28921	28813	28788	28759	28705	28817
GOLD 05OCT2017	BULLISH	28672.3	28709.7	28810.7	28608.66	28571.3	28507.7	28406.7	28635
GOLD 04AUG2017	BULLISH	28423.3	28462.7	28561.7	28363.66	28324.3	28264.7	28165.7	28384
GOLDGUINEA 31AUG2017	BULLISH	22794	22836	22925	22747	22705	22658	22569	22752
GOLDGUINEA 31JUL2017	BULLISH	22618	22687	22830	22544	22475	22401	22258	22549

Registered Office:#15-8-1/2/3, 2nd floor, Sliddiamber Bazar, Hyderabad - 500012, Telangana State. INDIA.

Corporate Office: #3-6-196/197, Pnme Plaza, 2nd floor, flat No. 204 A & B, H1mayath Nagar, Hyderabad - 500029, Telangana State.INDIA.

Ph:+91-40-64645000,Fax: +91-40-23262166,E-mail:support@basanonline.com,Website:www.basanonline.com



BASAN COMMODITY LIMITED

DAILY COMMODITY REPORT 27th July 2017

COMMODITIES	TREND	R1	R2	R3	PIVOT POINT	S1	S2	S3	Close
GOLDM 05OCT2017	BULLISH	28666.7	28707.3	28797.3	28617.33	28576.7	28527.3	28437.3	28626
GOLDM 05SEP2017	BULLISH	28574	28622	28732	28512	28464	28402	28292	28526
GOLDM 04AUG2017	BULLISH	28465.3	28534.7	28676.7	28392.66	28323.3	28250.7	28108.7	28396
GOLDPETAL 31OCT2017	BULLISH	2853	2853	2853	2853	2853	2853	2853	2853
GOLDPETAL 29SEP2017	BEARISH	2859	2863	2869	2857	2853	2851	2845	2855
GOLDPETAL 31AUG2017	BEARISH	2857.66	2867.33	2885.33	2849.33	2839.66	2831.33	2813.33	2848
GOLDPETAL 31JUL2017	BULLISH	2839.66	2851.33	2882.33	2820.33	2808.66	2789.33	2758.33	2828
LEAD 29SEP2017	BEARISH	151.38	152.46	154.46	150.46	149.38	148.46	146.46	150.3
LEAD 31AUG2017	BEARISH	150.3	152.1	155	149.2	147.4	146.3	143.4	148.5
LEAD 31JUL2017	BEARISH	149.33	151.16	154.11	148.21	146.38	145.26	142.31	147.5
LEADMINI 29SEP2017	BEARISH	150.66	151.83	153.83	149.83	148.66	147.83	145.83	149.5
LEADMINI 31AUG2017	BEARISH	150.3	152.1	155	149.2	147.4	146.3	143.4	148.5
LEADMINI 31JUL2017	BEARISH	149.33	151.16	154.11	148.21	146.38	145.26	142.31	147.5
MENTHAOIL 31OCT2017	BULLISH	1066.73	1070.36	1079.36	1061.36	1057.73	1052.36	1043.36	1063.1
MENTHAOIL 29SEP2017	BEARISH	1054.33	1062.66	1076.66	1048.66	1040.33	1034.66	1020.66	1046
MENTHAOIL 31AUG2017	BEARISH	1046.26	1055.83	1073.23	1038.43	1028.86	1021.03	1003.63	1036.7
MENTHAOIL 31JUL2017	BEARISH	1035	1045	1063.1	1026.9	1016.9	1008.8	990.7	1025
NATURALGAS 26SEP2017	BEARISH	193.1	195.6	200	191.2	188.7	186.8	182.4	190.6
NATURALGAS 28AUG2017	BEARISH	190.33	192.96	197.56	188.36	185.73	183.76	179.16	187.7
NICKEL 31OCT2017	BULLISH	655.8	655.9	656.1	655.7	655.6	655.5	655.3	655.7
NICKEL 29SEP2017	BULLISH	655.96	661.43	673.13	649.73	644.26	638.03	626.33	650.5
NICKEL 31AUG2017	BEARISH	651.73	659.26	674.16	644.36	636.83	629.46	614.56	644.2
NICKEL 31JUL2017	BEARISH	647.16	654.93	670.23	639.63	631.86	624.33	609.03	639.4
NICKELM 31OCT2017	BEARISH	653.2	656.6	662.5	650.7	647.3	644.8	638.9	649.8
NICKELM 29SEP2017	BULLISH	656.26	662.63	676.13	649.13	642.76	635.63	622.13	649.9
NICKELM 31AUG2017	BEARISH	651.53	659.16	674.06	644.26	636.63	629.36	614.46	643.9
NICKELM 31JUL2017	BEARISH	647.2	654.8	669.9	639.7	632.1	624.6	609.5	639.6
PEPPER 20SEP2017	BEARISH	47196.7	47453.3	47958.3	46948.33	46691.7	46443.3	45938.3	46940
SILVER 05DEC2017	BULLISH	38874.3	39004.7	39359.7	38649.66	38519.3	38294.7	37939.7	38744
SILVER 05SEP2017	BULLISH	38232	38373	38741	38005	37864	37637	37269	38091
SILVERM 28FEB2018	BULLISH	39250	39275	39325	39225	39200	39175	39125	39225
SILVERM 30NOV2017	BULLISH	38988	39202	39675	38729	38515	38256	37783	38774
SILVERM 31AUG2017	BULLISH	38269.7	38433.3	38830.3	38036.33	37872.7	37639.3	37242.3	38106
SILVERMIC 28FEB2018	BULLISH	39561	39748	40128	39368	39181	38988	38608	39374
SILVERMIC 30NOV2017	BULLISH	38956	39128	39540	38716	38544	38304	37892	38784
SILVERMIC 31AUG2017	BULLISH	38277.7	38450.3	38858.3	38042.33	37869.7	37634.3	37226.3	38105
ZINC 29SEP2017	BEARISH	183.75	186.1	189.95	182.25	179.9	178.4	174.55	181.4

Registered Office:#15-8-1/2/3, 2nd floor, Slddiamber Bazar, Hyderabad - 500012, Telangana State. INDIA.

Corporate Office: #3-6-196/197, Pnme Plaza, 2nd floor, flat No. 204 A & B, H1mayath Nagar, Hyderabad - 500029, Telangana State.INDIA.

Ph:+91-40-64645000,Fax: +91-40-23262166,E-mail:support@basanonline.com,Website:www.basanonline.com



BASAN COMMODITY LIMITED

DAILY COMMODITY REPORT 27th July 2017

COMMODITIES	TREND	R1	R2	R3	PIVOT POINT	S1	S2	S3	Close
ZINC 31AUG2017	BEARISH	183.15	186	190.35	181.65	178.8	177.3	172.95	180.3
ZINC 31JUL2017	BEARISH	183.13	186.01	190.46	181.56	178.68	177.11	172.66	180.25
ZINCMINI 29SEP2017	BEARISH	183.73	186.16	189.96	182.36	179.93	178.56	174.76	181.3
ZINCMINI 31AUG2017	BEARISH	183.28	186.11	190.51	181.71	178.88	177.31	172.91	180.45
ZINCMINI 31JUL2017	BEARISH	183.1	185.95	190.35	181.55	178.7	177.15	172.75	180.25

Registered Office:#15-8-1/2/3, 2nd floor, Slddiamber Bazar, Hyderabad - 500012, Telangana State. INDIA.
Corporate Office: #3-6-196/197, Pnme Plaza, 2nd floor, flat No. 204 A & B, H1mayath Nagar, Hyderabad - 500029, Telangana State.INDIA.
Ph:+91-40-64645000,Fax: +91-40-23262166,E-mail:support@basanonline.com,Website:www.basanonline.com